



## Roller grille

### TG-A, TG-S, TG-E, TG-V and TG-X

#### Text example:

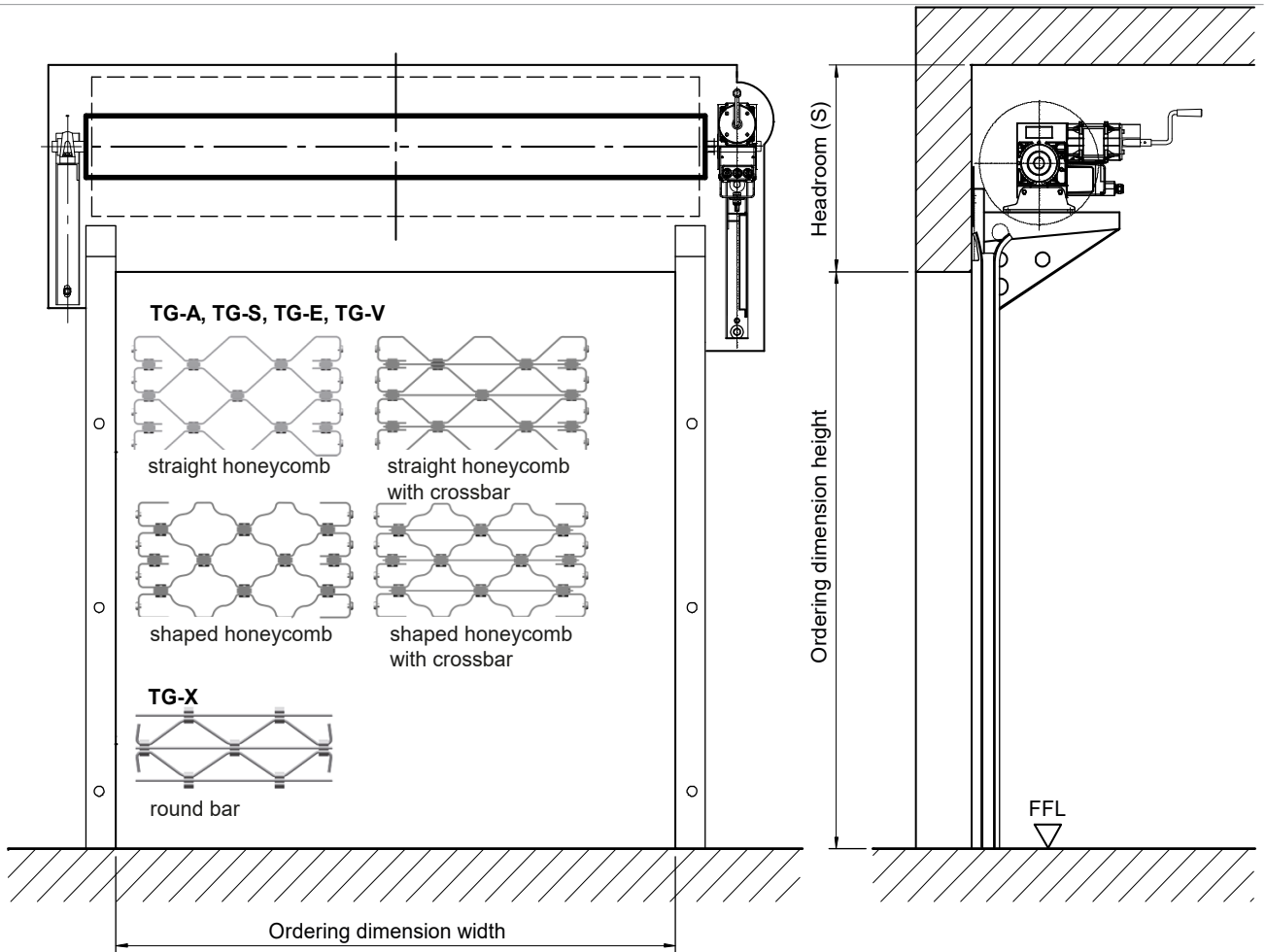
Roller grille, straight honeycomb, made of plain aluminium profiles, with galvanized bottom bracket and consoles, prime coated winding shaft. Make: Teckentrup or equivalent. Drive: Direct mount drive 400 V (three-phase voltage), IP54, emergency hand crank and integrated anti-drop device, TÜV tested, maintenance-free. Control: in the basic version, control voltage 24 V (safety low voltage), degree of protection IP65, 20 cycles (Open/Close) per hour, "close door" in deadman mode (permanent pressure) with pushbuttons "open-stop-close", fully wired ready for use and with CEE plug. Installation: Behind the opening, on concrete, all fastening elements - suitable for the structure material - are supplied.

Compile and tender according to requirements. Please refer to technical data below for respective details. Updated 01.03.2023.

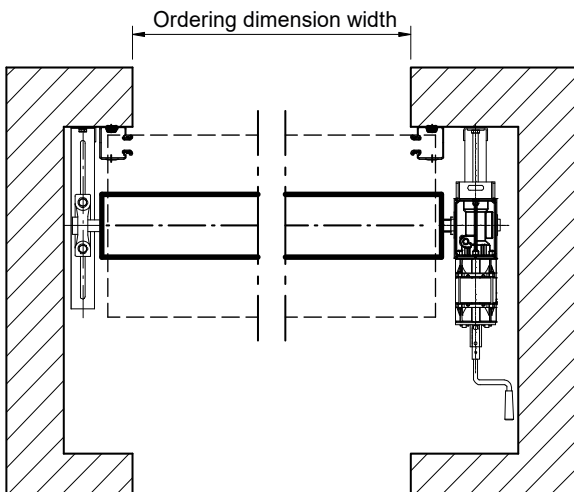
#### Technical Data

<b>Product</b>	<b>Roller grille</b> (profiles made of galvanized steel, stainless steel or aluminium)	<b>Drive</b>	Direct mount drive with integrated anti-drop device or chain drive with separate anti-drop device and electric forced disconnection, (three-phase voltage) 400 V, 50 Hz, 20 cycles* per hour, degree of protection IP 54, with emergency crank handle, TÜV tested and maintenance-free. Other special voltages, degrees of protection or types of emergency operation available on request. *A cycle is a complete closing and opening operation of the door.
<b>Installation in</b>	Walls made of <ul style="list-style-type: none"> <li>▪ Masonry min. 120 mm</li> <li>▪ Concrete min. 150 mm</li> <li>▪ Steel</li> <li>▪ Autoclaved aerated concrete min. 200 mm only with steel frame</li> <li>▪ Wood min. 240 mm</li> </ul>	<b>Control</b>	For direct mount and chain drives, fully wired, with CEE plug. The basic version can be locked and used as a deadman control, easily retrofittable with: <ul style="list-style-type: none"> <li>▪ Self-locking "CLOSE" in connection with a safety edge mechanism</li> <li>▪ radio control</li> <li>▪ Finger pinch protection</li> </ul> Accessories for controls: <ul style="list-style-type: none"> <li>▪ Traffic light control/Two-way traffic</li> <li>▪ Digital induction loop</li> </ul> Without safety edge mechanism: Basic version, control voltage 24 V (safety low voltage), degree of protection IP 65, "close door" and "open door" in deadman mode (permanent pressure) with push buttons "open-stop-close". LCD monitor required for programming!
<b>Dimensions</b>	Ordering dimensions width: 1.000 - 11.500 mm height: 1.000 - 8.000 mm larger doors on request (up to 18.000 mm).		
<b>Door curtain</b>	Door curtain, consisting of hinge-like interconnected galvanized steel or aluminium honeycomb profiles.		
<b>Profiles</b>	<ul style="list-style-type: none"> <li>▪ Made of flat material, straight or shaped honeycomb. Axial slides made of wear-proof plastic (TG-A, TG-S, TG-E, and TG-V) with and without crossbar</li> <li>▪ Made of flat-round material. Straight honeycomb with crossbar (TG-X)</li> </ul>		
<b>Surface</b>	<ul style="list-style-type: none"> <li>▪ Galvanized steel</li> <li>▪ Plain aluminium</li> <li>▪ Plain aluminium, reinforced with stainless steel connectors</li> <li>▪ Plain stainless steel (V2A)</li> </ul>		
<b>Bottom seal</b>	Galvanized steel bracket for steel and aluminium version stainless steel bracket for stainless steel version. Extruded bottom seal made of aluminium for TG-X.		
<b>Guide rails</b>	Robust steel profiles with wear-proof, easy-to-change plastic guides.		
<b>Winding shaft</b>	Prime coated steel tube with welded-in shafts on both sides for drive, anti-drop or bearing seat.		
<b>Consoles</b>	Made of galvanized steel. If desired, with sound insulation measures in accordance with DIN 4109		
<b>Locking</b>	As standard with automatic anti-lifting device if desired: All locks connected to the door control unit via safety switches. <ul style="list-style-type: none"> <li>▪ Bottom profile lockable from inside via two locking rods, with profile cylinder</li> <li>▪ Bottom profile lockable from inside and outside via two locking rods, with profile cylinder</li> </ul>		
		<b>Special equipment</b>	Permanent side part with integrated door. equipment:pivoted side part with integrated door. Roller box made of: <ul style="list-style-type: none"> <li>▪ Galvanized steel plate</li> <li>▪ Natural aluminium</li> <li>▪ Other versions on request</li> </ul> Sloping steel bracket, aligned to the floor, side or roof installation.

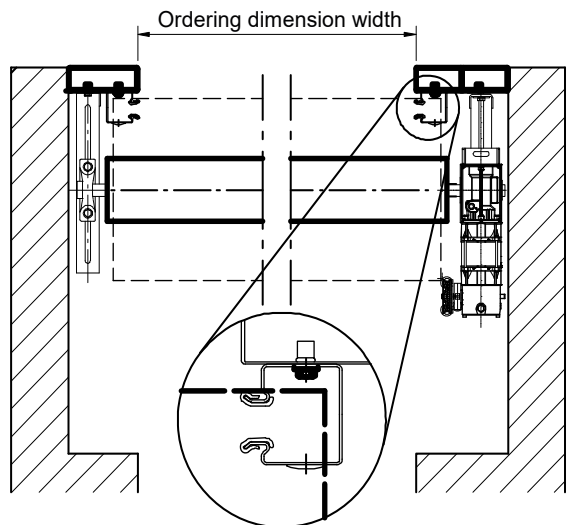
further installation details see associated installation instructions



**Standard installation:**  
Mounted behind the door opening



**Special installation:**  
Mounted in the door opening



**Further documents:**

The exact dimensions for the lateral buffers and the header buffer can be found in our installation data for roller shutters and roller grilles. It contains individually dimensioned assembly drawings for each shutter. Please contact us for exceptional handling.