



Fire-resistant steel door T 30-1-FSA „Teckentrup 72 ST“

Door **flush edged**, optionally with glazing

Text example:

T 30-1-FSA Steel-fire-resistant door tested in accordance with EN 1634-1 (DIN 4102). Single leaf door element. Door leaf 72 mm thick, flush edge. Type of handling DIN right. Corner frame 1.5 mm thick with 3-sided seal, without floor recess. Door leaf and frame galvanised and prime coated, grey-white similar RAL 9002. Mortise lock prepared for profile cylinder acc. DIN 18250. FP round handle set, black (plastic). Handle pivoted on bearing with tumbler (Bb) insert and 1 Bb key. 2 x 3D-hinges. 1 Top door closer.

„Teckentrup 62 ST“ or equivalent.

(Compile and tender according to requirements. Please refer to technical data below for respective details. Updated 01.06.2023)

Technical data

Technical approval	Z-6.20-1923 tested in accordance with EN 1634-1 (DIN 4102) for installation in internal Walls.		Glazing	Fire protection glass clear F30 type 1-0, glazing field angular with steel glazing beads. Max. glass dim 1162 x 1912 mm. Round glazing (Ø 300, 400 und 500) with stainless steel glass pane holding strip. Special equipment: ▪ Rectangular glazing-alu-glass pane holding strip in stainless steel optic / rectangular glazing made of stainless steel
Installation in	<ul style="list-style-type: none"> ▪ Masonry min. 115 mm ▪ Concrete min. 100 mm ▪ Lightweight construction stud wall* min. 100 mm ▪ Autoclaved aerated concrete (AAC) <ul style="list-style-type: none"> - AAC stones min. 115 mm - Reinforced AAC min. 115 mm ▪ Concealed steel- and wooden support F 60 		Special equipment	<ul style="list-style-type: none"> ▪ Handle sets/lever/knob sets: <ul style="list-style-type: none"> - Plastic - Light metal - Stainless steel - With short plate or rose escutcheon (various makes) ▪ Prepared for rose escutcheon ▪ Panic bar ▪ Locks <ul style="list-style-type: none"> - Panic locks - Block lock (must be provided) ▪ Profil cylinder 35,5 + 55,5 mm ▪ Top door closer DIN EN 1154 <ul style="list-style-type: none"> - hinge-/opposite hinge side - with slide rail - with hold open device - with smoke detector - ITS 96 (hidden) ▪ Electrical door opener ▪ Lock control (bolt contact) integrated ▪ Opening detector (reed contact) integrate ▪ Swing door operator ▪ Hold open device
Approved dimensions	Modular dimension	W 625 - 1.350 mm H 1.750 - 2.500 mm		
Type of handling	DIN right or DIN left			
Door leaf (double skinned)	Rebate type:	flush edge		
	Thickness:	72 mm		
	Sheet thickness:	1.0 mm		
	Security bolt	min. 1		
Frame	1.5 mm thickness with 3-sided seal, without floor recess fitted. Fastening by exposed masonry mounting. Special equipment: ▪ Block frame / counter frame or closed frame ▪ Frame with floor recess			
Floor closure	<ul style="list-style-type: none"> ▪ Retractable bottom seal ▪ Retrofittable bottom seal 			
Surface	Door leaf/frame galvanised and prime-coated grey-white, similar to RAL 9002 Special equipment: ▪ RAL of choice			
Hinges and closing devices	<ul style="list-style-type: none"> ▪ 3D-hinges for adjusting the door leaf ▪ 1 top door closer with guide rail 			
Fittings	<ul style="list-style-type: none"> ▪ Mortise lock prepared for profile cylinder according to DIN 18250 ▪ FP round handle set, black (plastic). Handle pivoted on bearing with tumbler(Bb) insert and 1 Bb-key. 			
	Standard sizes	Ordering dimensions / Modular dimension width x height	Clear passage sizes (corner frame) width x height	
		875 x 2000 2125	791 x 1958 2083	
		1000 x 2000 2125	916 x 1958 2083	
		1125 x 2000 2125	1041 x 1958 2083	
		1250 x 2000 2125	1166 x 1958 2083	
		2250	2208	

(Special sizes: from 625 x 1750 to 1250 x 2500)

Further qualifications (Special equipment):



Smoke proof in acc. with EN 1634-3/ DIN 18095 for solid walls and lightweight construction stud walls



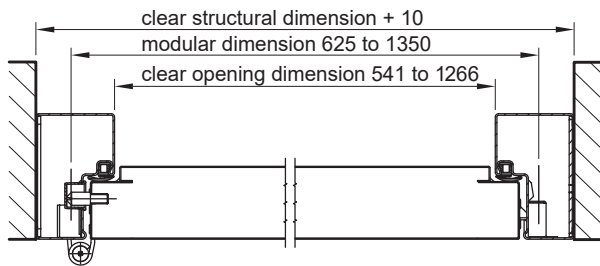
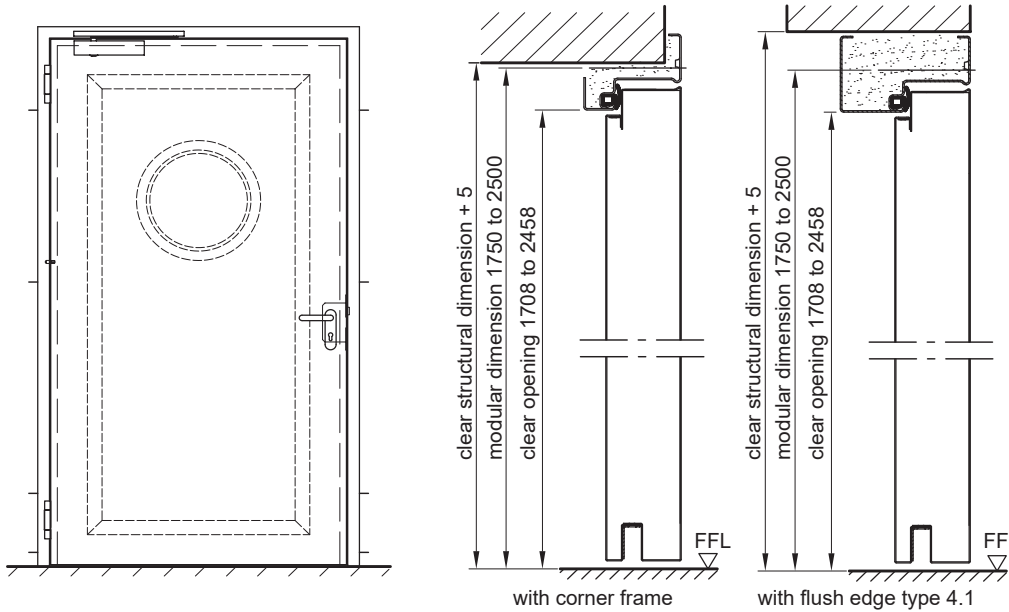
Sound insulated in acc. with DIN EN 20140/717 Part 1 up to **RW 35 dB** with retractable bottom seal



Burglar resistant in acc. to DIN EN 1627 - **RC 2**

Fire-resistant steel door
T 30-1-FSA „Teckentrup 72 ST“

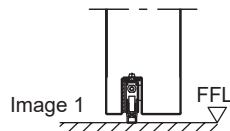
Door flush edged, optionally with glazing



DIN left shown
DIN right laterally reversed

Floor connections

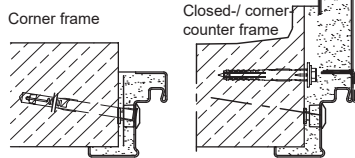
Image 1: with retractable bottom seal



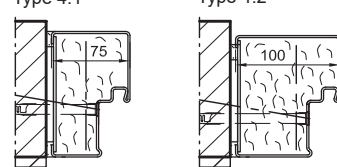
**Installation in masonry-
/concrete walls**

concrete walls ≥ 100 mm
masonry walls ≥ 115 mm

Exposed masonry mounting



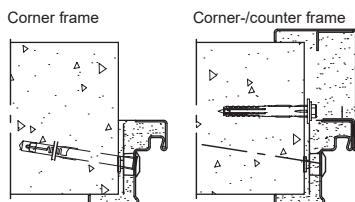
Flush edge installation



**Installation in autoclaved
aerated concrete walls**

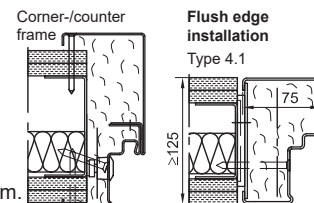
Made of auto. aerated concrete blocks or reinforced auto.aerated concrete thickness min. 115 mm.

Exposed masonry mounting

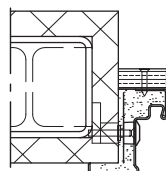


Fitting in assembly walls

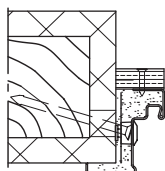
(as quick fit frame)
(doors with TDC)
assembly walls F30 in acc. with DIN 4102 Part 4 or in acc. with general building authority test certificate. Wall thickn.min.100 mm.



Installation in clad steel structure F60



Installation in clad wooden structure F60



Please find a detailed installation overview in the planning-, installation- and maintenance manual for 1-leaf and 2-leaf doors.