



Fire resistant steel door T 30-1-FSA „Teckentrup 62“

Door with **thin-. thick rebate**, optionally with glazing and upper casing/top light

Text example:

T 30-1-FSA Steel fire-resistant door tested in accordance with EN 1634-1. Single leaf door element. Type of handling DIN right. Door leaf 62 mm thick with thin rebate, 3-sided rebated. Corner frame 1.5 mm thick with 3-sided seal, without floor recess. Door leaf and frame galvanized and galvanised and prime-coated, grey-white, similar to RAL 9002. Mortise lock prepared for profile cylinder. FP round handle set, black (plastic). Handle pivoted on bearing with tumbler (Bb) insert and 1 Bb key. 1 spring hinge and 1 construction hinge with ball bearing „Teckentrup 62“ or equivalent.

(Compile and tender according to requirements. Please refer to technical data below for respective details. Updated 01.06.2023)

Technical data

Technical approval	Z-6.20-1923 door with thin rebate, Z-6.20-2275 door with thick rebate tested in accordance with EN 1634-1 (DIN 4102) for installation in internal Walls. Heat insulation value tested in acc. with EN ISO 12567-1 (without glazing) Sheet thickness 1,0 mm: $U_D = 1,3 \text{ W/m}^2\text{K}$ Sheet thickness 1,5 mm: $U_D = 1,4 \text{ W/m}^2\text{K}$	Fittings	<ul style="list-style-type: none"> ▪ Mortise lock prepared for profile cylinder according to DIN 18250 ▪ FP round handle set, black (plastic). Handle pivoted on bearing with tumbler (Bb) insert and 1 Bb-key.
Installation in	<ul style="list-style-type: none"> ▪ Masonry min. 115 mm ▪ Concrete min. 100 mm ▪ Lightweight construction stud wall* min. 88 mm ▪ Autoclaved aerated concrete (AAC) <ul style="list-style-type: none"> - AAC stones min. 115 mm - Reinforced AAC min. 115 mm ▪ Concealed steel- and wooden supports F60 <p>* Assembly walls $\geq F 30$ in acc. with DIN 4102 Part 4 or in acc. with general building authority test certificate. Approved wall types see register "installation details".</p>	Glazing	<p>Fire-Resistant glass clear F30 Typ 1-0, angular glazing with alu-glass pane holding strip. Max. glass dim.: thin rebate: 904 x 2.150 mm thick rebate: 1.162 x 1.912 mm</p> <p>Round glazing (Ø 300, 400 and 500) with steel-glass pane holding strip galvanized and prime coated, grey-white, similar to RAL 9002.</p> <p>Special equipment:</p> <ul style="list-style-type: none"> ▪ Rectangular glazing-alu-glass pane holding strip in stainless steel optic / ▪ Rectangular-/ round glazing-glass pane holding stripes made of stainless steel ▪ Flush-mounted glazing (thin rebate)
Approved dimensions	<p>Modular dim. thin rebate: W 500 - 1.500 mm H 500 - 4.000 mm with upper casing/top light up to H 4.600 mm</p> <p>Modular dim. thick rebate: B 500 - 1.500 mm H 500 - 3.500 mm with upper casing/top light up to H 3.750 mm</p>	Special equipment	<ul style="list-style-type: none"> ▪ Handle sets/lever/knob sets: <ul style="list-style-type: none"> - Plastic - Light metal - Stainless steel - With short plate or rose escutcheon (various makes) ▪ Prepared for rose escutcheon ▪ Panic bar ▪ Locks: <ul style="list-style-type: none"> - Panic locks - Block lock (must be provided) ▪ Profil cylinder 40,5 + 40,5 mm ▪ TDC DIN EN 1154 hinge/opposite hinge side <ul style="list-style-type: none"> - with slide rail - with hold open device - with smoke detector - ITS 96 (hidden) ▪ Electrical door opener ▪ Lock control (bolt contact) integrated ▪ Opening detector (reed contact) integrated ▪ Swing door drive ▪ Design profile-FB ▪ 3D-hinges (with TDC)
Type of handling	DIN right or DIN left		
Door leaf (double skinned)	<p>Rebate type: thin-. thick rebate</p> <p>Trap door: 4-sided rebated</p> <p>Door: 3-sided rebated</p> <p>Thickness: 62 mm</p> <p>Sheet thickness: 1.0 mm or 1.5 mm > MD dimension 3.000 mm only 1.5 mm</p> <p>Security bolt : min. - / 1</p>		
Frame	<p>Corner frame 1.5/2.0 mm thick, trap door 4-sided, door 3-sided with seal. Door without floor recess. Fixing of the frame by exposed masonry installation.</p> <p>Special equipment:</p> <ul style="list-style-type: none"> ▪ Block frame, counter frame, closed frame or TSM (dry and fast installation) -frame ▪ Frame with floor recess 		
Floor closure	<ul style="list-style-type: none"> ▪ Retractable bottom seal ▪ Sliding threshold seal ▪ With buffer strip and seal <p>Retrofittable bottom seal</p>		
Surface	<p>Door leaf/frame galvanised and prime-coated grey-white, similar to RAL 9002</p> <p>Special equipment:</p> <ul style="list-style-type: none"> ▪ RAL of choice 		
Hinges and closing devices	<ul style="list-style-type: none"> ▪ 1 spring hinge and 1 construction hinge with ball bearing or ▪ 2 CO hinges with ball bearing and 1 TDC 		
		Standard sizes	Ordering dim./ Modular dimension width x height
		Steel door	Clear passage sizes (corner frame) width x height
		875 x 2000	791 x 1958
		2125	2083
		1000 x 2000	916 x 1958
		2125	2083
		1125 x 2000	1041 x 1958
		2125	2083
		1250 x 2000	1166 x 1958
		2125	2083
		2250	2208

(Special sizes: from 500 x 1750 mm to 1500 x 4000 mm)

Further qualifications
(Special equipment):



Smoke proof in acc. with DIN 18095/ EN 1634-3 with TDC, for solid walls and lightweight construction stud walls



Sound insulated in acc. with DIN EN 20140/717-1 up to MD 1350 x 2500 mm without glazing **up to RW 42 dB** with retractable bottom seal depending on door structure and equipment of bottom seal



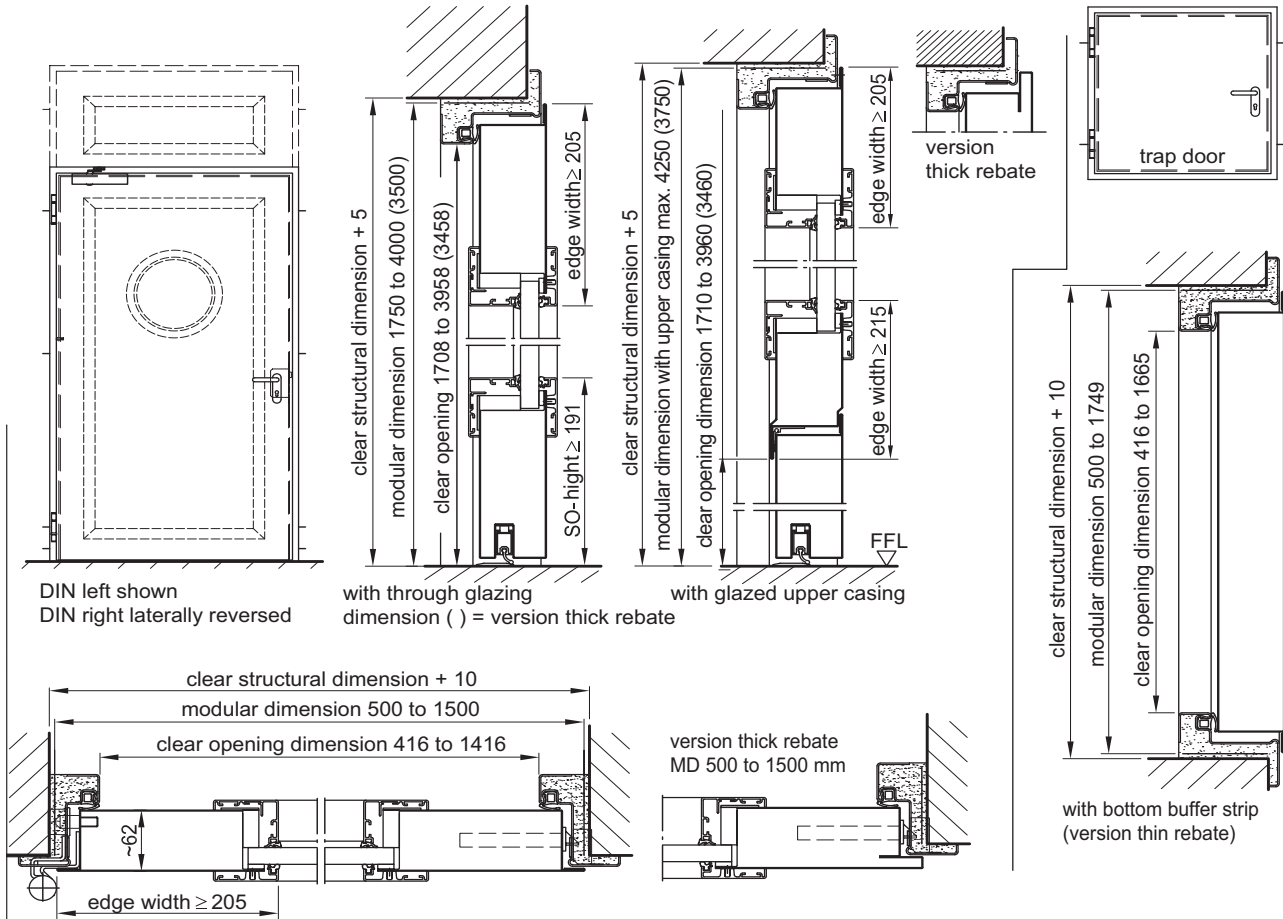
Burglar resistant in acc. to DIN EN 1627 - **RC 2 - RC 4** (thin rebate) **RC 2 - RC 3** (thick rebate)



Fire resistant steel door T 30-1-FSA „Teckentrup 62“

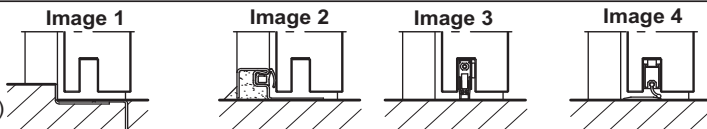
Door with thin-. thick rebate, optionally with glazing and upper casing/top light

Also available in **STAINLESS STEEL**

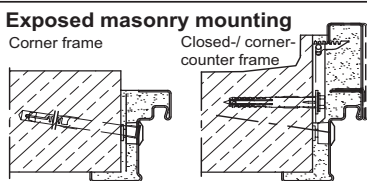


Floor connections

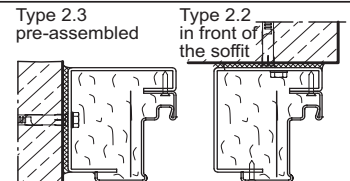
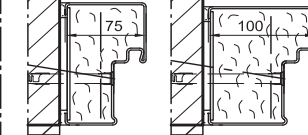
- Image 1:** with bottom buffer strip
- Image 2:** with bottom buffer strip/seal
- Image 3:** with retractable bottom seal (smoke protection door with TDC)
- Image 4:** with sliding threshold seal



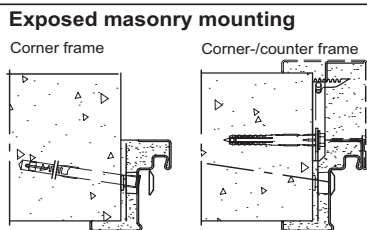
Installation in masonry-/concrete walls
concrete walls ≥ 100 mm
masonry walls ≥ 115 mm



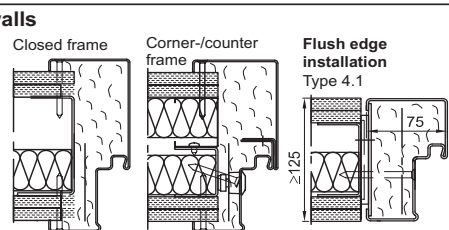
Flush edge installation
Type 4.1 Type 4.2



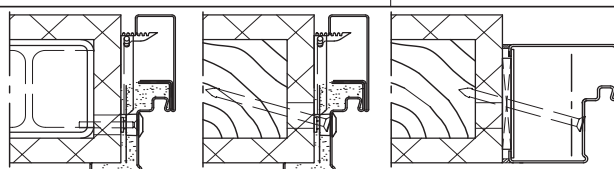
Installation in autoclaved aerated concrete walls (doors with TDC)
Made of auto. aerated concrete blocks or reinforced auto. aerated concrete.
Wall thickness min. 115 mm.



Fitting in assembly walls (as quick fit frame)
(doors with TDC)
assembly walls $\geq F30$ in acc. with DIN 4102 Part 4 or in acc. with general building authority test certificate.
Wall thic kn. min. 88mm



Installation in concealed steel support F60 wooden support F60



Please find a detailed installation overview in the planning-, installation- and maintenance manual for 1-leaf and 2-leaf doors.