



Fire-resistant Steel trap door /Steel door T 30-1-FSA „Teckentrup HT 8-D“

Door/Trap door with thin rebate, suitable for left/right

Text example:

T 30-1 Steel-Fire-resistant door tested in accordance with DIN 4102. Single leaf, suitable for left/right usable elements. Door leaf 42 mm thick, 4-sided rebated. Corner frame 4-sided, 2.0 mm thick, with seal revolving door leaf (sound insulated). Door leaf and frame galvanized and prime-coated, grey-white, similar to RAL 9002. Mortise lock with latch function prepared for profile cylinder. FP round handle set black (plastic). Handle pivoted on bearing with tumbler (Bb) insert and 1 Bb key. 1 spring hinge and 1 construction hinge with ball bearing. „Teckentrup HT 8-D“ or equivalent.

(Compile and tender according to requirements. Please refer to technical data below for respective details. Updated 01.06.2023)

Technical data

Technical approval	Z-6.20-1956 tested in accordance with DIN 4102 for installation in internal walls. Heat insulation value tested in acc. with EN ISO 12567-1: $U_D = 1,5 \text{ W}/(\text{m}^2 \cdot \text{K})$	
Installation in	<ul style="list-style-type: none"> ▪ Masonry min. 115 mm ▪ Concrete min. 100 mm 	
Approved dimensions	Modular dimension	W 750 - 1125 mm H 875 - 2125 mm
Type of handling	DIN right or DIN left usable	
Trap-/Door leaf	Double skinned 4-sided rebated Thickness: Sheet thickness: Security bolt:	thin rebate 42 mm 0.9 mm min. 1
Frame	Corner frame 4-sided, 2.0 mm thickness, with seal revolving (sound insulated). The frame on the door is equipped so that the lower stop can be removed. Fastening by exposed masonry mounting. Special equipment:: ▪ Counter frame	
Floor closure	<ul style="list-style-type: none"> ▪ Buffer strip and seal (standard) ▪ With double sliding threshold seal (specify type of handling) 	
Surface	Door leaf/Frame galvanized and prime coated, similar to RAL 9002, grey white RAL 9002	
Hinges and closing device	<ul style="list-style-type: none"> ▪ 1 spring hinge ▪ 1 CO hinge with ball bearing 	
Fittings	<ul style="list-style-type: none"> ▪ Mortise lock with latch function, PC perforated ▪ FP-round handle set / handle set black (plastic). Handle pivoted on bearing with tumbler (Bb) insert and 1 Bb key. 	
Special equipment	<ul style="list-style-type: none"> ▪ Handle sets/lever/knob sets: Plastic Light metal Stainless steel With short plate or rose escutcheon (various makes) ▪ Prepared for rose escutcheon ▪ Locks Panic locks ▪ Profile cylinder 30,5 + 30,5 mm ▪ Top door closer DIN EN 1154 ▪ Hold open devices 	

Standard sizes (L= Stock)	Ordering dimensions / modular dimensions		Clear passage sizes (corner frame)	
	width x	height	width x	height
Steel trap door	750 x	875 L	680 x	805
	800 x	800 L	730 x	730
	875 x	875 L	805 x	805
		1000 L		930
		1250 L		1180
	1000 x	1000 L	930 x	930

(Special sizes: prefer to T30-1-FSA-trap door „Teckentrup 62“)

Standard sizes (L= Stock)	Ordering dimensions / modular dimensions		Clear passage sizes (corner frame)	
	width x	height	width x	height
Steel door	750 x	2000 L	680 x	1961
	875 x	2000 L	805 x	1961
		2125 L		2066
	1000 x	2000 L	930 x	1961
		2125 L		2086
	1125 x	2000 L	1055 x	1961
		2125 L		2086

(Special sizes: prefer to T 30-1-FSA-door „Teckentrup 42“)

Further qualifications
(Special equipment):



Smoke proof
in accordance with EN 1634-3/
DIN 18095 with top door closer, for solid walls



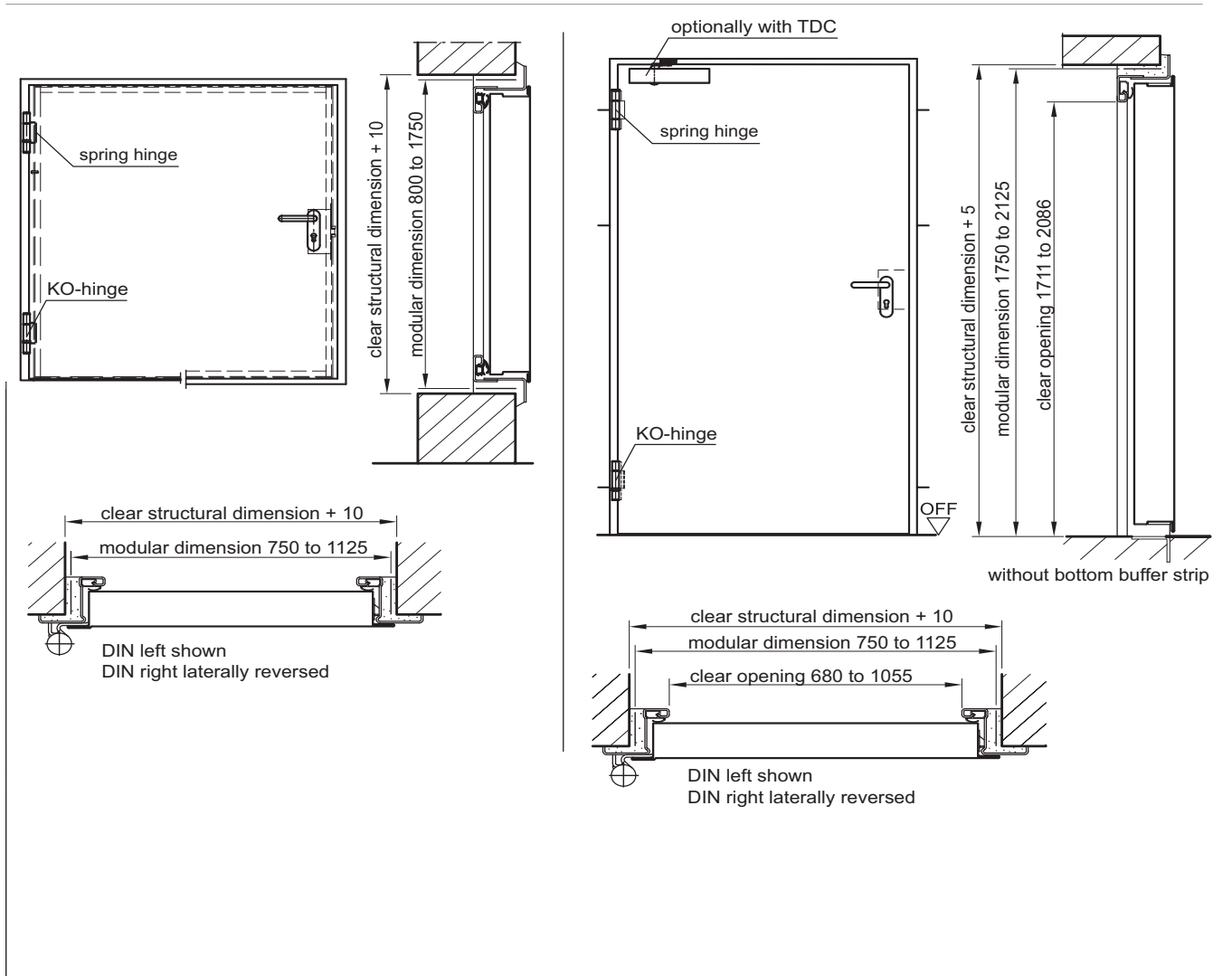
Sound insulated in accordance
with EN 20140/717 -1
RW 39dB with bottom buffer and seal
RW 37dB with double sliding threshold seal



Burglar resistant
in acc.with
DIN ENV 1627-WK2

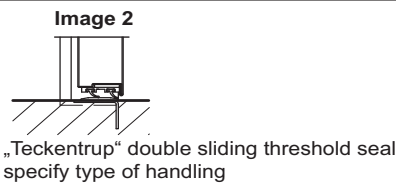
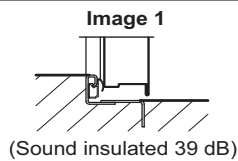
Fire-resistant Steel trap door /Steel door
T 30-1-FSA „Teckentrup HT 8-D“

Door/Trap door with thin rebate, suitable for left/right



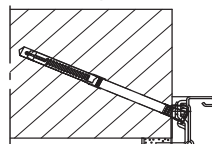
Floor connections
Image 1: with bottom buffer/seal
Image 2: with bottom seal

version smoke proof
acc. DIN 18095 with TDC

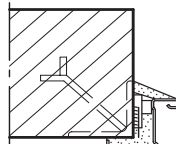


**Installation in masonry-
/concrete walls**
concrete walls ≥ 100 mm
masonry walls ≥ 115 mm

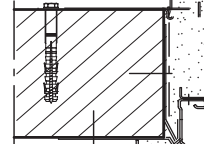
**Exposed masonry
mounting**



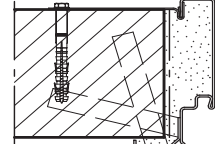
Welded-on assembly



Wall plug assembly



Wall anchor installation



Corner frame, standard

Exposed masonry mounting

Corner-/ counter frame

Closed frame

Fitting in assembly walls
(lightweight construction stud walls)
Assembly walls F30/F90 in acc.
with DIN 4102 Part 4 or in acc.
with general building authority
test certificate. Wall thickness min.
100 mm. Approved wall types see
register "installation details".

