



Security steel door dw 42-1 „Teckentrup“ WK 2

Door with **thin rebate**

Text example:

dw 42-1 „Teckentrup“ Steel-Security door, tested in acc. DIN ENV 1627 WK 2. Single leaf door element. Type of handling DIN right. Door leaf 42 mm thick with thin rebate, corner frame 2.0 mm thick with 3 sided seal, without floor recess. Door leaf and frame galvanised and prime coated, grey white similar RAL 9002. Mortise lock with latch function, PC-perforated. FP aluminium safety-lever/knob, Safety profile cylinder P2 with anti-drilling and extraction protection BZ as per DIN 18252. 3 keys and guarantee certificate, 2 construction hinges with ball bearing. Scurity door dw 42 „Teckentrup“ or equivalent.

(Compile and tender according to requirements. Please refer to technical data below for respective details. Updated 01.03.2021)

Technical data

Article	Security door dw 42-1 „Teckentrup“ tested acc. DIN ENV 1627 Thermal transmittance: U _D max. 1,5 W/m²K	
Installation in	<ul style="list-style-type: none"> ▪ Masonry min. 115 mm ▪ Concrete min. 100 mm ▪ Autoclaved aerated concrete <ul style="list-style-type: none"> - for aerated concrete stones min. 175 mm - for reinforced typen min. 150 mm 	
Dimensions	Modular dimension	W 750 – 1250 mm H 1750 – 2250 mm
Type of handling	DIN right or DIN left	
Door leaf	Double skinned, 3-sided rebated thin rebate Door leaf thickness: 42 mm sheet thickness: 1.0 or 1.5 mm Security bolt: min. 1	
Frame	Corner frame 2.0 mm thick galvanised with 3-sided seal, without floor recess. Fastening by exposed masonry mounting Special equipment: <ul style="list-style-type: none"> ▪ Block frame / counter frame or closed frame ▪ Frame with floor recess 	
Floor closures	<ul style="list-style-type: none"> ▪ Retractable bottom seal ▪ Sliding threshold seal ▪ Buffer strip with seal Retractable bottom seal	
Surface	Door leaf/Frame galvanised and prime coated grounded, grey white similar RAL 9002 Special equipment: <ul style="list-style-type: none"> ▪ RAL of choice 	
Hinges + closing devices	<ul style="list-style-type: none"> ▪ 2 construction hinges with ball bearing (secured hinge bolts) 	
Fittings	<ul style="list-style-type: none"> ▪ Mortise lock with latch function, PC perforated ▪ FP-aluminium safety -handle set, Class ES 1 acc. DIN 18257 ▪ Safety profile cylinder P2 with anti drilling and extraction protection BZ acc. DIN 18252 ▪ 3 keys and guarantee certificate 	

Special equip-ment

- Lever handle set/knob lever set
- Handle on both sides for passage door
 - Light metal
 - stainless steel
- Locks
 - Profile cylinder 35 + 30
 - Panic locks
 - Block lock (muss be provided)
- Additional top and bottom locking
- Top door closer DIN EN 1154
- Wide angle spyhole
- Integrated lock inspector (bolt contact)
- Escape door opener
- Alarm wire insert
- Safety chain (lockable)
- Rain canopy/top rain guard

	Ordering dim./ modular dim. Width x height	Clear passage size (corner frame) Width x height
Standard sizes	750 x 2000	680 x 1965
	875 x 1875	805 x 1840
	2000	1965
	2125	2090
	1000 x 2000	930 x 1965
	2125	2090
	1125 x 2000	1055 x 1965
	2125	2090
	1250 x 2000	1180 x 1965
	2125	2090
	2250	2215

(Special sizes: from 750 x 1750 to 1250 x 2250)

Further qualifications
(special version)

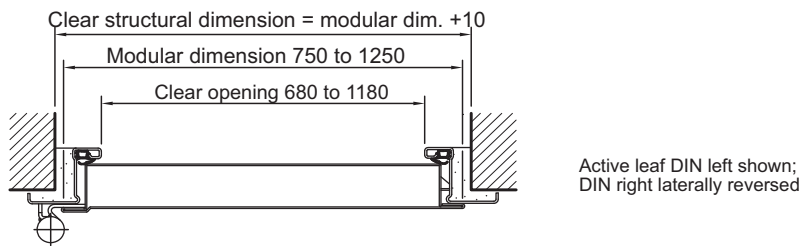
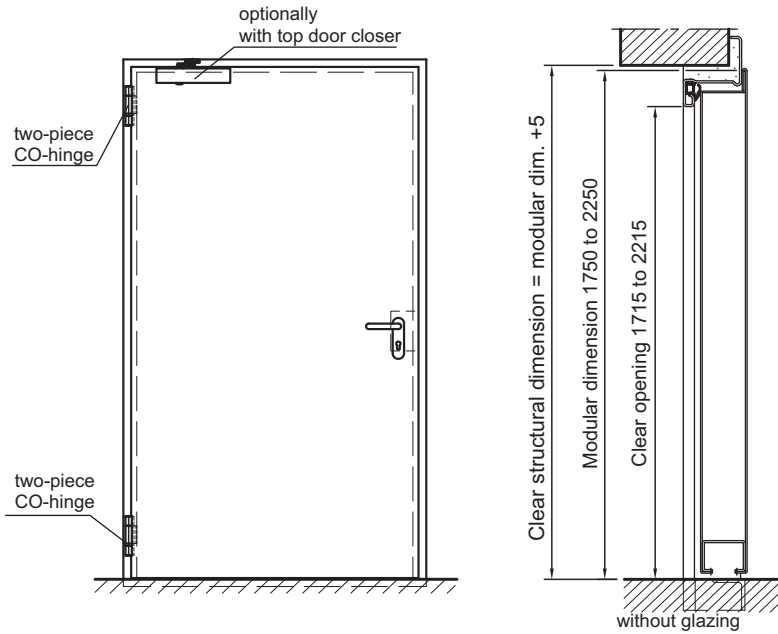


Sound insulated acc. DIN EN 20140/717 part 1
RW 37dB with bottom buffer
RW 37dB with retractable bottom seal
RW 37dB with sliding threshold seal



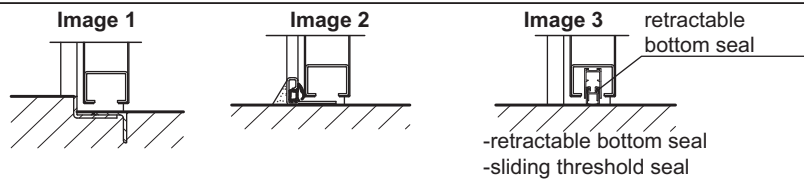
Security steel door dw 42-1 „Teckentrup“ WK 2

Door with thin rebate



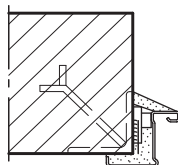
Floor connections:

Image 1: with bottom buffer/seal
Image 2: without bottom buffer/seal
Image 3: with lower bottom seal



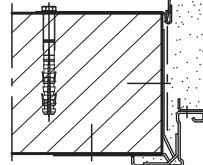
**Installation in masonry/
concrete walls**
concrete walls ≥ 120 mm
masonry walls ≥ 115 mm

Weld-on assembly



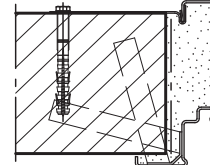
(Corner frame)

Wall plug assembly

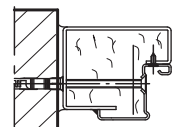


(Corner frame with counter frame)

Wall anchor installation



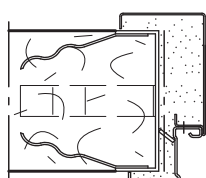
(Closed frame)



(Block frame)

**Installation in autoclaved
aerated concrete walls**
Made of aerated concrete block
and auto. aerated
concrete stones acc. DIN 4165
strength class 4 min. 150 mm
or reinforced auto. aerated
concrete slabs strength class 4.
Wall thickness min. 150 mm

Anchor installation



Wall plug assembly

