



Security steel door dw 62-1 „Teckentrup“ RC 2- RC 3

Door with **thick rebate**, optionally with glazing/ventilation grille

Text example:

Security steel door dw 62-1 „Teckentrup“, tested in accordance with DIN EN 1627-RC 2. Single-leaf door element. Type of handing DIN right. Door leaf 62 mm thick, rebated on 3-sides. Corner frame 1.5 mm thick, with 3-sided seal and bottom sill. Door-leaf and frame galvanized and powder-coated (primed) in Grey white, similar to RAL 9002. FS-Alu safety-handle set, class ES 1 DIN 18257. Safety profile cylinder P2 with anti-drilling and extraction protection BZ, DIN 18252. 3 keys and security certificate. 2 KO hinges with ball bearings. 1 security bolt.

Compile and tender according to requirements. Please refer to technical data below for respective details. Updated 1. April 2018

Technical data

| | | |
|-----------------------------------|---|----------------------|
| Product | Security steel door dw 62-1 „Teckentrup“ in accordance with DIN EN 1627- RC 2 - RC 3 Heat insulation as per EN ISO 12567-1 (unglazed), U _D : max. 1,3 W/m²K | |
| Installation in | <ul style="list-style-type: none"> ▪ Masonry min. 115 mm ▪ Concrete min. 100 mm ▪ Aerated concrete min. 170 mm ▪ Lightweight construction stud walls must meet the manufacturer`s security requirements. | |
| Dimensions | width: 750 - 1500 mm height: 1750 - 3000 mm | |
| Type of handing | DIN right or DIN left | |
| Door leaf | Double-skinned, 3 sides Door leaf thickness: 62 mm Sheet thickness: 1,0 or 1,5 mm Security bolts: min. 1 | thick rebated |
| Frame | Corner frame 1,5/2,0mm thick, trap door with 4-sided, door with 3-sided seal. Frame fastening by exposed masonry mounting. Special equipment: <ul style="list-style-type: none"> ▪ block-, counter- or closed frame ▪ with floor recess | |
| Floor seals | <ul style="list-style-type: none"> ▪ Retractable floor seal ▪ Sliding threshold seal ▪ Buffer strip and seal Floor seal retrofittable | |
| Surface | Door leaf/Frame galvanized and prime coated, similar to RAL 9002 (Grey white). <ul style="list-style-type: none"> ▪ Special equipment: RAL of choice | |
| Hinges and closing devices | <ul style="list-style-type: none"> ▪ RC 2: 2 KO with ball bearings ▪ RC 3: 3-D-hinge (secured hinge bolt) | |
| Fittings | <ul style="list-style-type: none"> ▪ RC 2: Mortise lock prepared for profile cylinder (up to MD-height 2750 mm only with main lock, > 2750 mm with top locking). FS alu safety handle set class ES 1 DIN 18257 ▪ RC 3: Active leaf: multipoint locking with bolt-swinging bolt (main lock with lev/kn, PC-punched). FS alu safety handle set class ES 3 DIN 18257 RC 2 - RC 3: Safety profile cylinder P2 with anti-drilling and extraction protection BZ as per DIN 18252. 3 keys and security certificate. | |

Also available in **STAINLESS STEEL**

| | |
|--------------------------|---|
| Glazing | <ul style="list-style-type: none"> ▪ RC 2: Burglar resistance class as per DIN EN 356-P4A ▪ RC 3: Burglar resistance class as per DIN EN 356-P5A RC 2 - RC 3: Standard: with aluminium glass holding strips (steel glass holding strips on request without additional charge). |
| Special equipment | Handle sets / Lever/Knob sets: - plastic - light metal - stainless steel - with short plate or rose escutcheon (various makes) locks: profile cylinder 45,5 + 35,5 mm - panic locks block lock (must be provided) <ul style="list-style-type: none"> ▪ top door closer DIN EN 1154 <ul style="list-style-type: none"> - head assembly - with slide rail - with locking device - with smoke detector - ITS 96 (hidden) ▪ electric door opener ▪ Integrated lock inspector (bolt contact) ▪ Integrated opening indicator (Reed contact) ▪ Hold-open devices ▪ 3D-hinges (with top door closer) |

| | Ordering dimensions / (modular dimensions) Width x height | Clear passage size (corner frame) width x height |
|-----------------------|---|--|
| Standard sizes | 750 x 2000 | 666 x 1958 |
| | 875 x 1875 | 791 x 1833 |
| | 2000 | 1958 |
| | 2125 | 2083 |
| | 1000 x 2000 | 916 x 1958 |
| | 2125 | 2083 |
| | 1125 x 2000 | 1041 x 1958 |
| | 2125 | 2083 |
| | 1250 x 2000 | 1166 x 1958 |
| | 2125 | 2083 |
| 2250 | 2208 | |

(Special sizes: from 750x1750 to 1500x3000 mm)

Further Qualifications
(Special equipment)



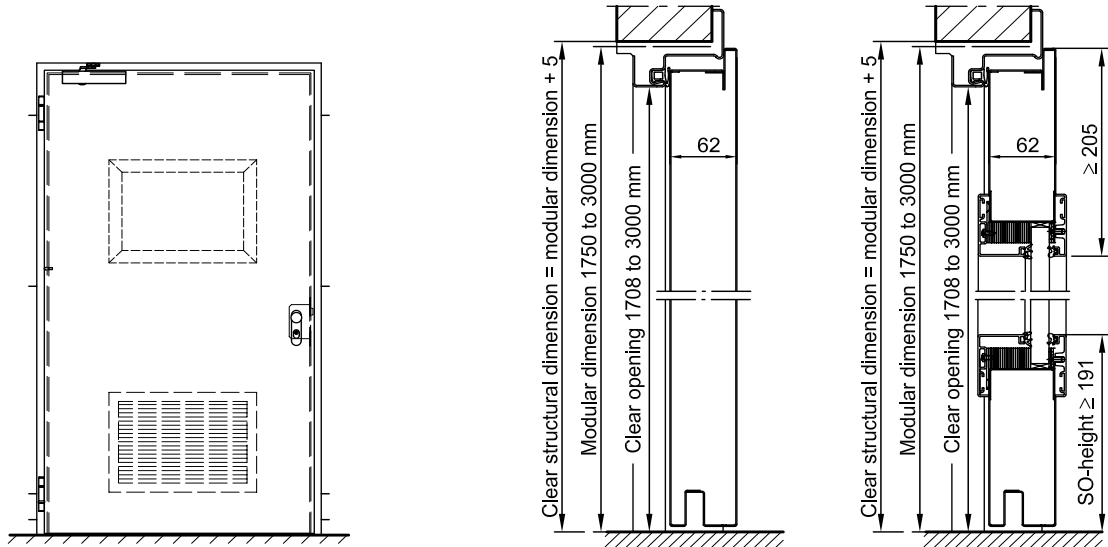
Sound insulated in acc. with DIN EN 20140/717 Part 1
 RC 2:
RW 38dB with retractable floor seal
RW 38dB with sliding threshold seal



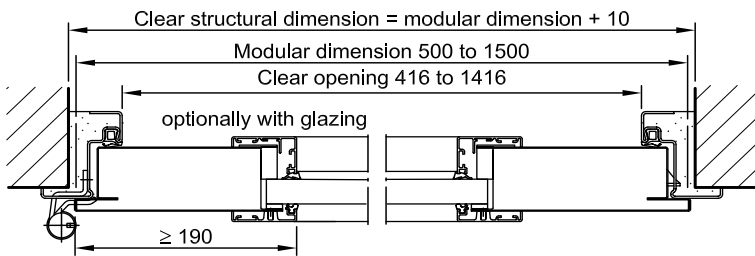
Sound insulated in acc. with DIN EN 20140/717 Part 1
 RC 3:
RW 38dB with bottom buffer and seal
RW 38dB with retractable floor seal
RW 37dB with sliding threshold seal

Security steel door
dw 62-1 „Teckentrup“ RC 2- RC 3

Door with **thick rebate**, optionally with glazing/ventilation grille



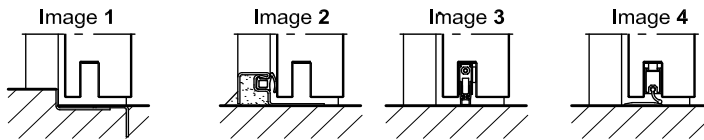
with through glazing and aluminium glass-holding strip



DIN left shown
DIN right laterally reversed

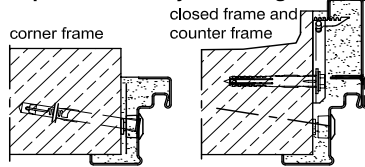
Floor connections:

- Image 1: With bottom buffer
- Image 2: With bottom buffer/seal
- Image 3: With bottom seal (smoke-proof door with top door closer)
- Image 4: sliding threshold seal

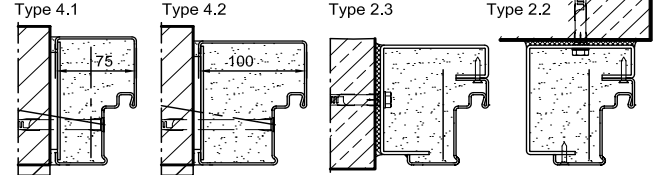


Installation in masonry/ concrete walls
concrete walls ≥ 100 mm
masonry walls ≥ 115 mm

exposed masonry mounting

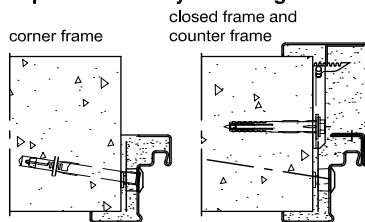


Flush installation

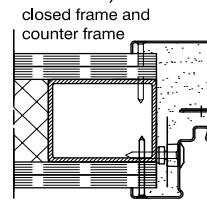


Installation in autoclaved aerated concrete walls (doors with top door closer)

exposed masonry mounting



Installation in lightweight construction stud walls (doors with top door closer)



Please find a detailed installation overview in the planning-, installation- and maintenance manual for 1-leaf and 2-leaf doors.