



Security steel door dw 62-1 „Teckentrup“ RC 2-4

Door with **thin.- / thick rebate**, optionally with glazing / steel-/ventilation grille

Text example:

Security steel door dw 62-1, tested in accordance with DIN EN 1627 RC 2. Single-leaf door element, Type of handling DIN right. Door leaf 62 mm thick with thin rebate, rebated on 3-sides. Corner frame 1.5 mm thick with 3-sided seal, without floor recess. Door-leaf and frame galvanized and powder-coated (primed) in grey white, similar to RAL 9002. Mortice lock prepared for profile cylinder. FS-Alu safety-handle set, class ES 1 DIN 18257. Safety profile cylinder P2 with anti-drilling and extraction protection BZ, DIN 18252. 3 keys. 2 KO hinges with ball bearings. Product security steel door dw 62 „Teckentrup“ or similar.

(Compile and tender according to requirements. Please refer to technical data below for respective details. Updated 01.06.2023)

Technical data

Product	Security steel door dw 62-1 "Teckentrup" tested in acc. with DIN EN 1627 RC 2 - RC 4 Heat insulation as per EN ISO 12567-1 (doors without glazing) thin rebate Sheet thickness 1,0 1,5 mm: - U _b : max. 1,3 1,4 W/m²K (RC 2 -RC 3) thick rebate Sheet thickness 1,0 1,5 mm: - U _b : max. 1,1 1,3 W/m²K (RC 2 -RC 3)			Glazing	Burglar resistance class as per RC 2 = DIN EN 356-P4A RC 3-4 = DIN EN 356-P6B RC 2 = glazing angular with aluminium glass pane holding strips. RC 3-4 = glazing angular with steel-glass pane holding strips Special equipment: ▪ Rectangular glazing-aluminium-glass pane holding stripes in stainless steel optic / rectangular glazing, glass pane holding stripes made of steel or stainless steel	
Installation in		RC 2	RC 3	RC 4	Special equipment	▪ Handle sets/lever/knob sets on both sides for passage door - Light metal - Stainless steel ▪ Bar handle/push bar ▪ Locks - Panic locks - Multipoint lock - Block lock (must be provided) ▪ Profil cylinder thin rebate : - Danger side = hinge side: 45 + 40 - Danger side = opposite hinge side: 45 + 40 ▪ Profil cylinder thick rebate : - Danger side = hinge side: 50 + 35 - Danger side = opposite hinge side: 40 + 45 ▪ Overhead door closer DIN EN 1154 - Hinge/opposite hinge side - ITS 96 (concealed) ▪ Wide-angle spy ▪ Lock control (bolt contact) built in ▪ Escape door opener ▪ Alarm wire insert ▪ Security chains (also lockable) ▪ Steel transformer grille (RC2 - RC 3) ▪ Rain sheet/rain strip ▪ 3D hinges
Dimensions	Modular dimension	W 750 - 1.500 mm H 1.750 - 3.000 mm				
Type of handling	DIN right or DIN left					
Door leaf double skinned	rebated on 3-sides Door leaf thickness: Sheet thickness: Security bolt min.:	thin.- tick rebated 62 mm 1.0 or 1.5 mm 1 = RC 2-3 4 = RC 4				
Frame	Corner frame 1.5 mm thick with 3-sided seal, without floor recess. Frame fastening by exposed masonry mounting. Special equipment: ▪ Block- / counter- or closed frame ▪ Frame with floor recess					
Floor closure	▪ Retractable floor seal ▪ Sliding threshold seal ▪ Buffer strip and seal Floor seal retrofittable					
Surface	Door leaf/frame galvanized and prime coated, similar to RAL 9002 (grey white) Special equipment: RAL of choice					
Hinges + closing devices	▪ 2 construction hinges with ball bearings (secured hinge bolt)					
Fittings	▪ RC 2 thin.- thick rebate Mortice lock with profile cylinder (up to MD-height 2.750 mm only with main lock, > 2.750 mm with top locking) ▪ RC 3 thin rebate (up to MD-height 2.500 mm only with main lock, > 2.500 mm with top locking) ▪ RC 3 thick rebate multipoint locking with bolt-/swinging bolt ▪ RC 4 thin rebate mortice lock prepared for profile cylinder with additional top and bottom locking ▪ FP-alu-safety-lever/knob handle set, Class ES 1 / ES 3 acc. DIN 18257 ▪ Safety profile cylinder P2 with anti-drilling and extraction protection BZ as per DIN 18252 ▪ 3 keys					
	Standard sizes	Ordering dimension/ modular dimensions width x height	Clear passage size (corner frame) width x height			
	(specifications in mm)	750 x 2000 875 x 1875 2000 2125 1000 x 2000 2125 1125 x 2000 2125 1250 x 2000 2125 2250	666 x 1958 791 x 1833 1958 2083 916 x 1958 2083 1041 x 1958 2083 1166 x 1958 2083 2208			
	(Special sizes: from 750x1750 mm to 1500x3000 mm)					

Further Qualifications
(Special equipment)

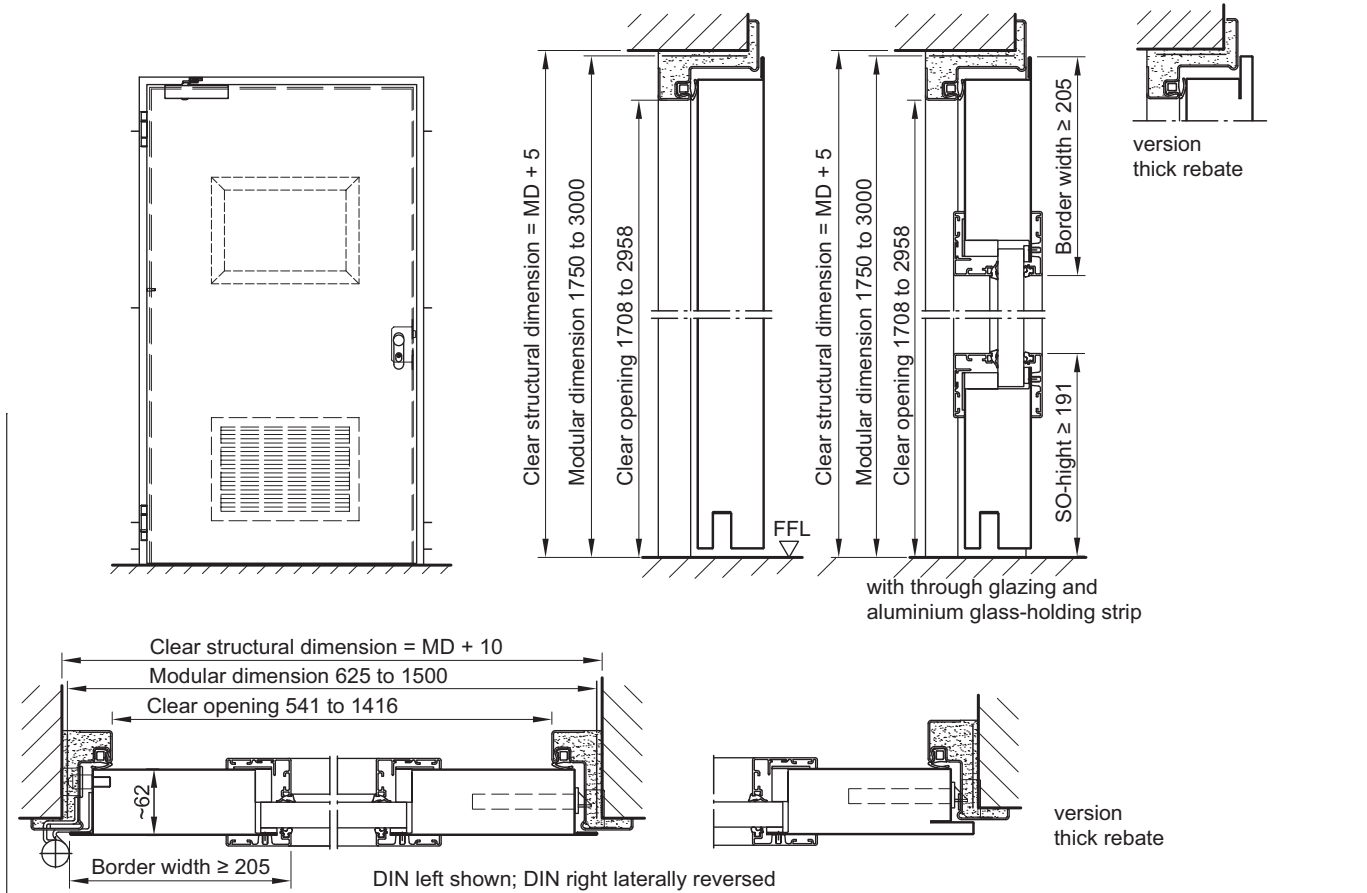


Sound insulated in acc.with DIN EN 20140/717 part 1
(up to MD 1350 x 2500 - without glazing)
up to **RW 42dB**

Security steel door
dw 62-1 „Teckentrup“ RC 2-4

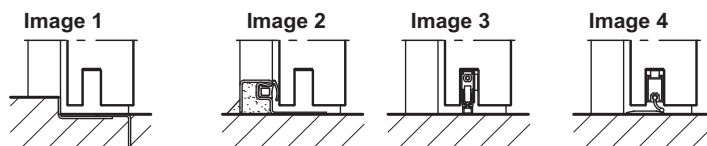
Door with thin.- / thick rebate, optionally with glazing / steel-/ventilation grille

Also available in **STAINLESS STEEL**



Floor connections

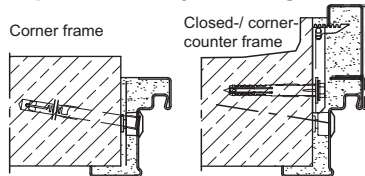
- Image 1: with bottom buffer
- Image 2: with bottom buffer /seal
- Image 3: retractable bottom seal (smoke protection with TDC)
- Image 4: with sliding threshold seal



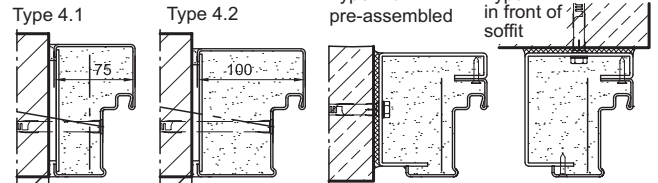
Installation in masonry- /concrete walls

- Masonry ≥ 115 mm RC 2
- ≥ 115 mm RC 3
- ≥ 240 mm RC 4
- Concrete ≥ 100 mm RC 2
- ≥ 120 mm RC 3
- ≥ 140 mm RC 4

Exposed masonry mounting



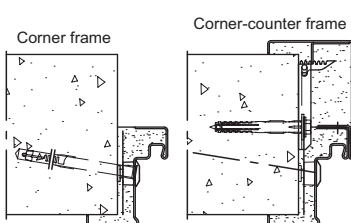
Flush installation



Installation in autoclaved aerated concrete walls (doors with TDC)

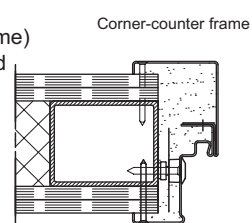
- Made of auto. aerated concrete blocks or reinforced auto. aerated concrete thickness
- min. 170 mm RC 2
- min. 240 mm RC 3

Exposed masonry assembly



Installation in mounting walls

- only RC 2 and RC 3 (Quick-assembly frame)
- (Doors with overhead door closer)



For a detailed overview of installation variants, see the planning, installation and maintenance instructions for 1-leaf and 2-leaf doors.