



Security steel door dw 62-2 „Teckentrup“ RC 2- RC 3

Door with **thick rebate**, optionally with glazing/ventilation grille

Text example:

Security steel door dw 62-2 „Teckentrup“, tested in accordance with DIN EN 1627-RC 2. Double-leaf door element. Active door leaf DIN right. Door leaf 62 mm thick, rebated on 3-sides. Corner frame 1.5 mm thick, with 3-sided seal and bottom sill. Door-leaf and frame galvanized and powder-coated (primed) in Grey white, similar to RAL 9002. FS-Alu safety-handle set, class ES 1 DIN 18257. Safety profile cylinder P2 with anti-drilling and extraction protection BZ, DIN 18252. 3 keys and security certificate. 2 KO hinges with ball bearings. 1 security bolt per leaf.

Compile and tender according to requirements. Please refer to technical data below for respective details. Updated 1. April 2018

Technical data

Product	Security steel door dw 62-2 „Teckentrup“ in accordance with DIN EN 1627- RC 2 - RC 3 Heat insulation as per EN ISO 12567-1 (unglazed), RC2 - RC3 = U_{D} : max. 1,4 W/m ² K	
Installation in	<ul style="list-style-type: none"> ▪ Masonry min. 115 mm ▪ Concrete min. 100 mm ▪ Aerated concrete min. 170 mm ▪ Lightweight construction stud walls must meet the manufacturer`s security requirements. 	
Dimensions	width: 1375 - 3000 mm height: 1750 - 3000 mm	
Type of handing	DIN right or DIN left	
Door leaf	Double-skinned, 3 sides Door leaf thickness: 62 mm Sheet thickness: 1,0 or 1,5 mm Security bolts: min. 1 per leaf	thick rebated
Frame	Corner frame 1,5/2,0mm thick, trap door with 4-sided, door with 3-sided seal. Frame fastening by exposed masonry mounting. Special equipment: <ul style="list-style-type: none"> ▪ block-, counter- or closed frame ▪ with floor recess 	
Floor seals	<ul style="list-style-type: none"> ▪ Retractable floor seal ▪ Sliding threshold seal ▪ Buffer strip and seal Floor seal retrofittable	
Surface	Door leaf/Frame galvanized and prime coated, similar to RAL 9002 (Grey white). <ul style="list-style-type: none"> ▪ Special equipment: RAL of choice 	
Hinges and closing devices	<ul style="list-style-type: none"> ▪ RC 2: 2 KO hinges with ball bearings per leaf ▪ RC 3: 3-D-hinge (secured hinge bolt) 	
Fittings	<ul style="list-style-type: none"> ▪ RC 2: Active leaf = Mortise lock prepared for profile cylinder (up to MD-height 2750 mm only with main lock, > 2750 mm with top locking). FS alu safety handle set class ES 1 DIN 18257 ▪ RC 3: Active leaf = multipoint locking with bolt-swinging bolt (main lock with lev/kn, PC-punched) RC 2 - RC 3: Safety profile cylinder P2 with anti-drilling and extraction protection BZ as per DIN 18252. 3 keys and security certificate. Inactive leaf: Concealed flush lever bolt with top and bottom locking bar	

Also available in **STAINLESS STEEL**

Glazing	<ul style="list-style-type: none"> ▪ RC 2: Burglar resistance class as per DIN EN 356-P4A ▪ RC 3: Burglar resistance class as per DIN EN 356-P5A RC 2 - RC 3: Standard: with aluminium glass holding strips (steel glass holding strips on request without additional charge).
Special equipment	Handle sets / Lever/Knob sets: - plastic - lightmetal - stainless steel - with short plate or rose escutcheon (various makes) locks: profile cylinder 45,5 + 35,5 mm - panic locks block lock (must be provided) <ul style="list-style-type: none"> ▪ top door closer DIN EN 1154 <ul style="list-style-type: none"> - head assembly - with slide rail - with locking device - with smoke detector - ITS 96 (hidden) ▪ electric door opener ▪ Integrated lock inspector (bolt contact) ▪ Integrated opening indicator (Reed contact) ▪ Hold-open devices

	Ordering dimensions / (modular dimensions) width x height	Clear passage size (corner frame) width x height
Standard sizes	1500 x 2000	1416 x 1958
	2125	2083
	1750 x 2000	1666 x 1958
	2125	2083
	2000 x 2000	1916 x 1958
	2125	2083
	2500	2458
	2125 x 2125	2041 x 2083
	2250 x 2250	2166 x 2208
	2500 x 2500	2416 x 2458

(Special sizes: from 1375 x 1750 to 3000 x 3000 mm)

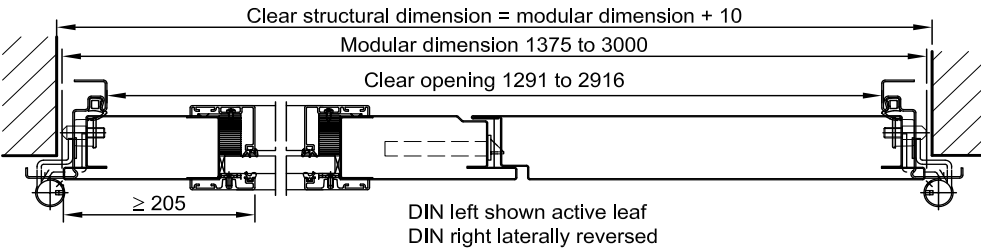
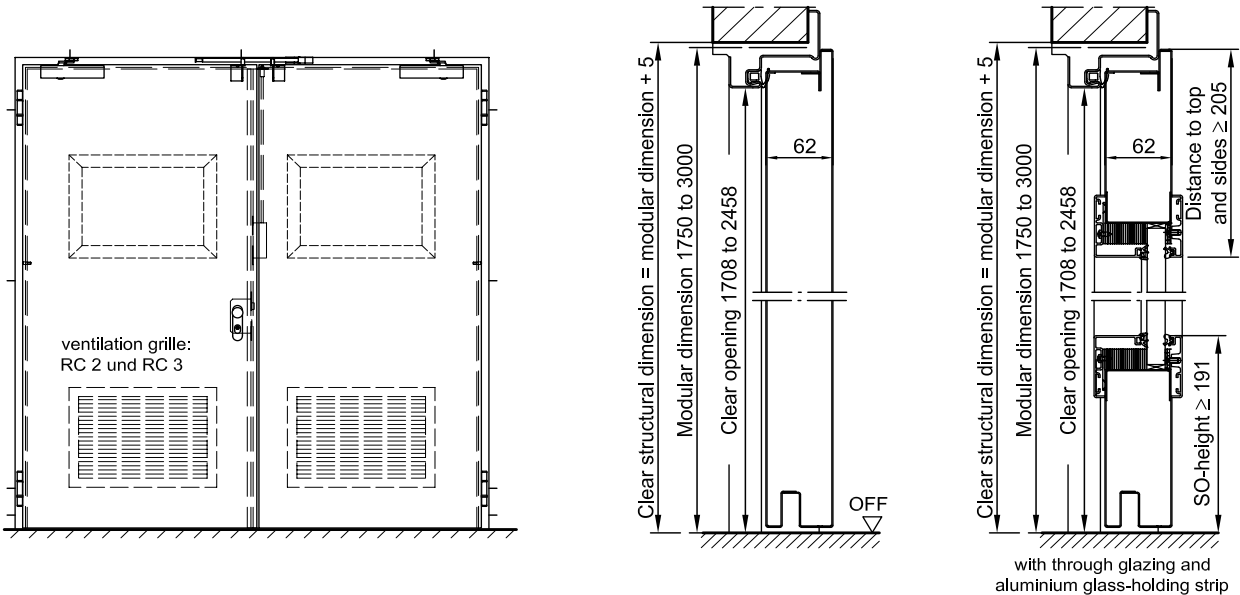
Further Qualifications
(Special equipment)



Sound insulated in acc. with DIN EN 20140/717 Part 1
 RC 3: **RW 37dB** with bottom buffer and seal
 RC 2 / RC 3: **RW 38dB** with retractable floor seal
 RC 2 / RC 3: **RW 38dB** with sliding threshold seal

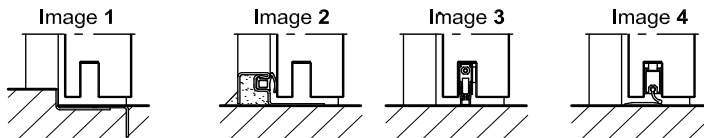
Security steel door
dw 62-2 „Teckentrup“ RC 2- RC 3

Door with **thick rebate**, optionally with glazing/ventilation grille



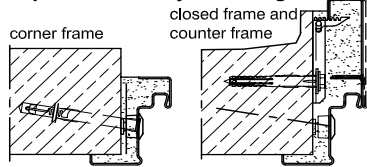
Floor connections:

- Image 1: With bottom buffer
- Image 2: With bottom buffer/seal
- Image 3: With bottom seal (smoke-proof door with top door closer)
- Image 4: sliding threshold seal

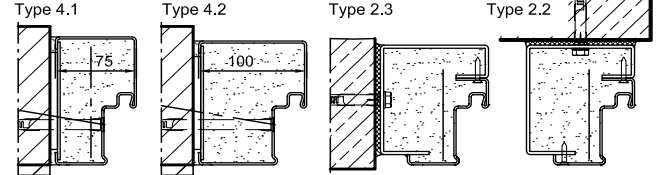


Installation in masonry/ concrete walls
concrete walls ≥ 100 mm
masonry walls ≥ 115 mm

exposed masonry mounting

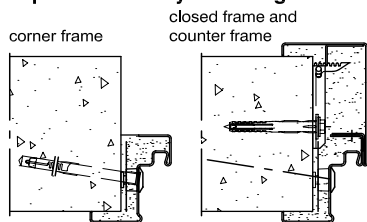


Flush installation

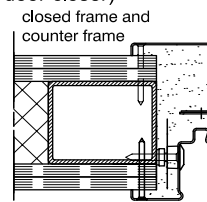


Installation in autoclaved aerated concrete walls (doors with top door closer)

exposed masonry mounting



Installation in lightweight construction stud walls (doors with top door closer)



Please find a detailed installation overview in the planning-, installation- and maintenance manual for 1-leaf and 2-leaf doors.