

It's all in the mix

Doors from Teckentrup in Riedpark Lauchringen

Living, working, shopping, parking – the Riedpark in Lauchringen is a prime example of how modern neighbourhoods can functionally and architecturally combine the different tasks in one ensemble. The steel and industrial sliding door technology in the complex is also exemplary: sliding doors with wicket doors ensure safety and convenience in the underground car park, while fire protection steel doors in a sophisticated black secure the access routes with an architecturally appropriate look.



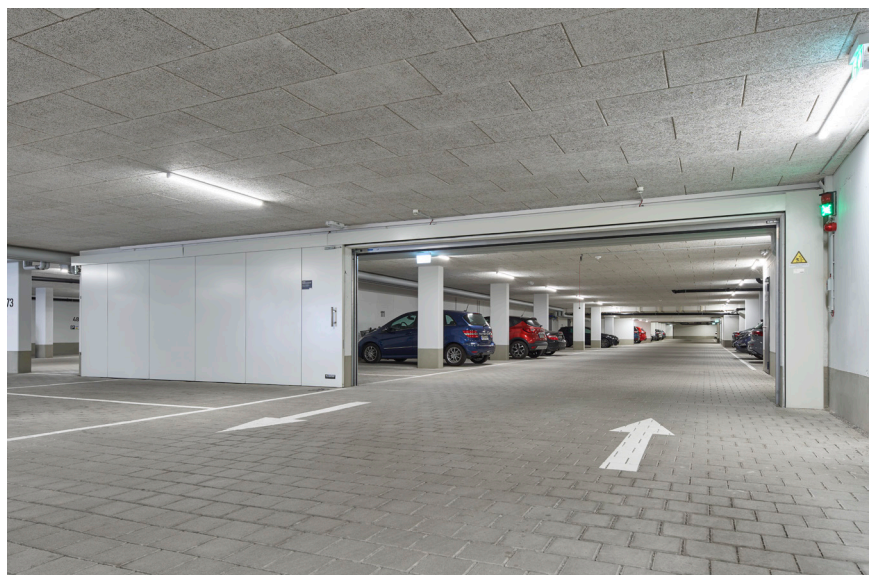
The project

With its proximity to Switzerland, Lake Constance and the southern Black Forest, Lauchringen is an attractive, family-friendly place to live. The newly built Riedpark offers a mix of living, shopping, parking and working. Two architecturally high-quality residential and commercial buildings, connected by a shared underground car park, comprise 36 apartments, six offices and six commercial units with areas between 336 and around 800 square meters.

A large number of steel and industrial sliding doors are part of this complex, which fulfill various requirements according to the different uses – for example in fire and smoke protection as well as for escape route planning. Teckentrup implemented exemplary solutions together with the contractor Hartmann Brandschutz & Tortechnik.



The new Riedpark in Lauchringen is a mix of living, shopping, parking and working. Many steel and industrial sliding doors are part of this complex, which also have to meet different requirements depending on the different uses.





The Teckentrup sliding fire-rated doors in overhead installation with wicket door separate the fire compartments in the event of a fire. The guiding rails technology of the sliding doors is elegantly concealed behind the panels.



Elegant and convenient: Sliding door with wicket door

The large underground garage is divided into public and private zones. It offers space for cars, bicycles and various cellar and utility rooms. The "Teckentrup 62 FST" fire protection sliding doors in ceiling installation ensure safety (in the event of fire). They combine fire protection, economy, convenience and aesthetics.

The installation of the doors has been optimized: instead of the conventional top track, Teckentrup uses an innovative tubular track system with an adjustable suspension. As the brackets are only attached at one point, height adjustment and leveling can be implemented quickly – and are also particularly adaptable. This makes it easy to compensate for unevenness in the floor. The entire guiding rails technology of the sliding doors is behind the panels, so the fastening system is not visible and is protected at the same time. The wire rope guide also runs in the tube system. The panels themselves lie elegantly and flat. The wicket door integrated in the door makes it easy for people to pass through even when the doors are closed.



The entrances to the underground garage and the technical rooms are fitted with "T30 FSA 62" fire doors with thin rebates. Glass inlets provide a clear view.

The external doors in the delivery zone are designed as resistant steel doors. They ensure safety, withstand the weather and blend harmoniously into the overall appearance. The construction elements (DW62-2, also with thin rebate) also protect the facility against break-ins with security class RC3.

The project thus characterizes the modern quarter in Lauchringen, which meets different usage requirements and combines appearance, functionality and security.



Photo credits: Christian Eblenkamp / Teckentrup



External steel doors to the commercial units. The robust steel elements blend in visually with the overall appearance of the complex and protect against break-ins with security class RC3.

Fact sheet	Facts and figures
Address	Riedpark 79787 Lauchringen
Client	Riedpark Süd GmbH & Co. KG / Schleith Immobilien
Architects	Duffner Architekten
Fabricator	Hartmann Brandschutz & Tortechnik
Teckentrup products	60 doors (including 42 fire protection doors "T30 FSA 62 thin rebate" and 6 security doors "DW62-2 thin rebate RC3" and 4 fire protection doors
Construction time	10/2019 – 09/2021