

CAMOUFLAGED IN THE SCENERY

Europa-Park, Rust

Fire protection that is visually impressive: In the Europa-Park in Rust, the fire doors have none of the clunky appearance of former fire protection elements; on the contrary, they blend harmoniously into the sophisticated design of the amusement park. In order to implement the special solutions in the best possible way, the developer responsible, SchwarzwaldElemente, worked closely with the German door manufacturer Teckentrup.

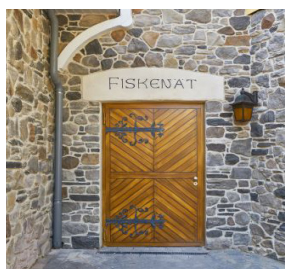


The Project

Germany's largest theme park is located in the border triangle of Germany, France and Switzerland. With 95 hectares, Europa-Park attracts almost six million visitors a year with 13 roller coasters and more than 100 attractions and shows in 15 European themed areas. The themed areas take visitors to different countries and regions of Europe and are designed as authentically and typically as possible. Within one day, visitors can experience a short journey through the continent. The park also includes themed hotels as well as the Rulantica water park, opened in 2019, which is the largest construction project in the company's history, located in the immediate vicinity of Hotel Krønasaår.



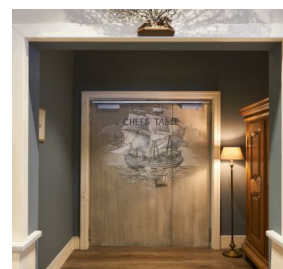
Do you recognise the door? In the „Water World Rulantica“, the doors are set into the artificial rock and are painted to match.



A historic wooden door with heavy-duty fittings? - Visually yes, technically a fire protection barrier T90-FSA „62“.



Here the doors are the eye-catchers: red and white diagonal stripes on the doors of the technical rooms in the area of the bus stop.



Elegantly solved: double-leaf T30 fire door with door leaves of different widths and elaborate painting, matching the ambience of the stylish restaurant.



The Solution(s)

It was always necessary to find the perfect solution for the sometimes very different requirements. Project manager Andre Gutenkunst from the building contractor SchwarzwaldElemente emphasises the good cooperation: „Teckentrup has proven itself as a partner, especially for the special solutions: In addition to the required range of products, we received expert and comprehensive advice.“ In the Europa-Park, T30-1/2 FSA 62, dw 42, dw 62 multi-purpose doors, and others, are used - depending on the fire protection requirements.

Doors merge with the scenery.

Given the enormous dimensions of the park, visitors pass through a number of doors of various sizes and designs during their stay, usually unnoticed. The doors often have to fulfil fire protection requirements. Teckentrup has contributed around 250 doors to date. The latest additions to the amusement park, the Rulantica water world and the Krønåsår hotel, received around 150 doors from the door specialist.



Whether painted or foiled: the artistic designs make the doors part of the experience - here in the Scandinavian theme area.



Large, double-leaf doors with panic function are used for the emergency exit.

The requirements were unusual: in addition to protection against fire, smoke and in some cases noise, the doors had to match the scenery of the themed areas.



Glass inlets in the fire doors in the Moulin Rouge themed area provide necessary insight.



„Snorri Tours” - here, the octopus „Snorri” guides visitors through the world of Rulantica. Also painted in style here and thus perfectly integrated: the doors.

Despite the many doors, some of which were very different, the planners at Hotel Krønåsår wanted to work with just one supplier. This is where Teckentrup proved its worth: In addition to the required range of products, they scored points for their expert and comprehensive advice.



The impressive entrance hall of the Museum-Hotel Krønåsår allows visitors directly to step into the footsteps of great explorers and adventurers.

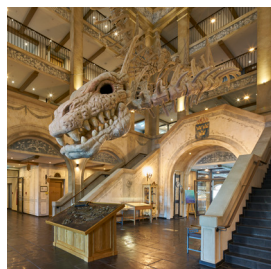


The Show Cooking room of Hotel Krønåsår stands out with its imposing and rustic design. Here, too, the Teckentrup doors blend unobtrusively into the overall picture.



Only for those with a head for heights: The doors were installed at a lofty height and even here they blend in perfectly with the authentic architecture.

Photo credits: Photodesign Eblenkamp, Europa-Park



Fact sheet

Facts and Figures Hotel Krønåsår

Builder	Europa-Park Ltd. & Co Mack KG
Building contractor	Peter Gross Bau
Project doors	SchwarzwaldElemente Ltd.
Interior designers	archis Architekten + Ingenieure Ltd.
Usage	4-star superior hotel, 276 themed rooms and 28 suites, conference rooms, restaurants
Opening	2019