

Fire-Resistant Steel Trap Door T 30-1-FSA

“Teckentrup OS”

can be used left/right handed



Text example

Compile and tender according to requirements.
Please refer to Technical Data below for respective details.
Updated 01.01.2011

Position	No. of pieces	Item	Unit price €	Total price €
		T 30-1-FSA fire-proof steel trap door tested in accordance with DIN 4102. Single-leaf left/right handed door element. Galvanized and prime coated door leaf similar to RAL 9002 (grey white). 52 mm thick, rebated on 4-sides. Galvanized and prime coated corner frame similar to RAL 9002 (grey white). 2 mm thick, with 4-sided seal. Mortice lock with lever/knob, prepared for profile cylinder. Black plastic handle set. Handle pivoted on bearing, with tumbler insert (Bb) and 1 Bb key. 1 security bolt. FE hinge set in accordance with DIN 18272. “Teckentrup OS” (approval no.: Z-6.20-1948) or equivalent.		



Technical data

Building authority approval:

Z-6.20-1948 tested in acc. with DIN 4102

Installation in:

- Masonry min. 115 mm
- Concrete min. 100 mm
- Lightweight construction stud wall (F90) in acc. with DIN 4102 Part 4 min. 100 mm
- Autoclaved aerated concrete (only for internal walls) min. 150 mm

Approved dimensions:

Modular dimensions
Width: 500 – 1250 mm
Height: 500 – 1750 mm

Type of handling:

Can be used left/right handed

Door leaf:

Double-skinned, rebated on 4 sides or without bottom buffer, rebated on 3 sides
Door leaf thickness: 52 mm
Sheet thickness: 1 mm or 1.5 mm
security bolt: 1
Reinforcement: Flat steel
Insulation: Mineral fibre board
fire-protection strips: 4-sided

Frame:

Corner frame 2 mm tick with seal, with bottom buffer 4-sided (standard); without bottom buffer 3-sided with bottom sill
With 2 or 3 welded-on wall anchor plugs on each side.

Special equipment:

Block frame and counter or closed frame galvanized and prime coated similar to RAL 9002 (grey white)

- Installation in lightweight construction stud walls/autoclaved aerated concrete, counter frame or closed frame required

Surface:

Door leaf/Frame galvanized and prime coated similar to RAL 9002 (grey white).

Hinges and closing devices:

- 2 two-piece hinges in acc. with DIN 18272, one hinge functions as a spring hinge or KO hinges with top door closer

Fittings:

- Mortice lock with lever/knob, prepared for profile cylinder
- Black plastic handle set. Handle pivoted on bearing, with tumbler insert (Bb) and 1 Bb key.

Special equipment:

- Handle sets / Lever/Knob sets:
 - Plastic
 - Light metal
 - Stainless steel
 - With short plate or rose escutcheon (various makes)
- Prepared for rose escutcheon
- Locks
 - Profile cylinder 35.5 + 35.5 mm
 - Panic locks
- Top door closer DIN EN 1154 Head assembly
- Mortice lock with lever/knob, top door closer required above modular dimension 1000 x 1000
- Installation in autoclaved aerated concrete walls with top door closer
- Hold-open devices

Standard sizes:

Ordering dimensions/ Modular dimensions width x height	Clear opening dimensions width x height
750 x 875	666 x 791
875 x 875	791 x 791
875 x 1000	791 x 916
875 x 1250	791 x 1166
1000 x 1000	916 x 916
1000 x 1250	916 x 1166
1250 x 1250	1166 x 1166

Special sizes: From 500 x 500 mm to 1250 x 1750 mm

Further qualifications: (special version)

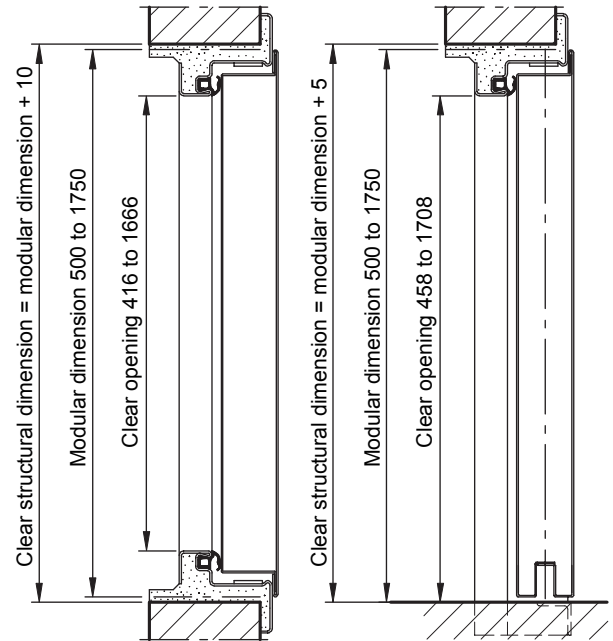
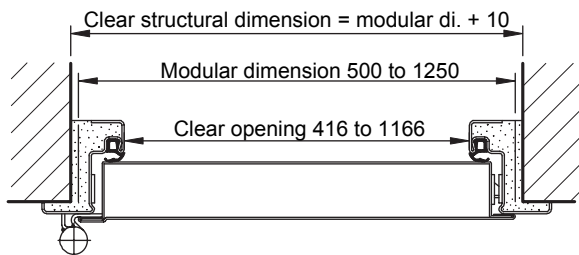
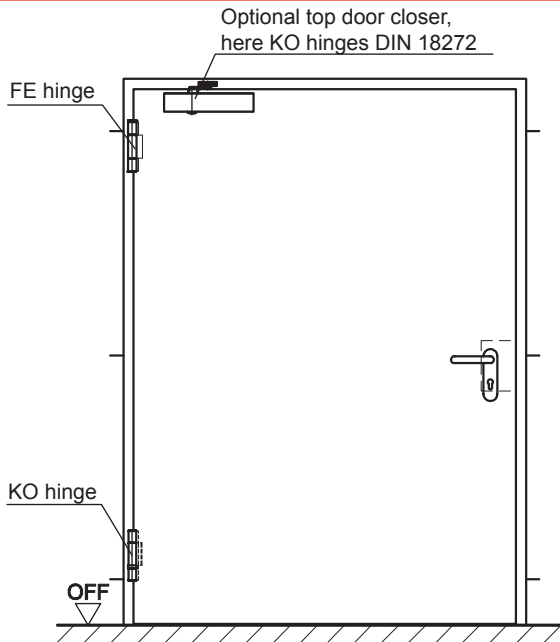


- ♦ **Smoke-proof in acc. with DIN 18095 with top door closer for solid and lightweight construction stud walls**

Fire-Resistant Steel Trap Door T 30-1-FSA

“Teckentrup OS”

can be used left/right handed



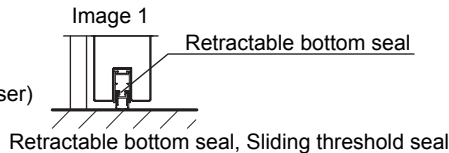
With bottom buffer
(smoke protection standard)

Without bottom buffer

DIN left shown, DIN right laterally reversed
(with bottom buffer = can be used on the right/left-hand side
without bottom buffer = specify type of handling)

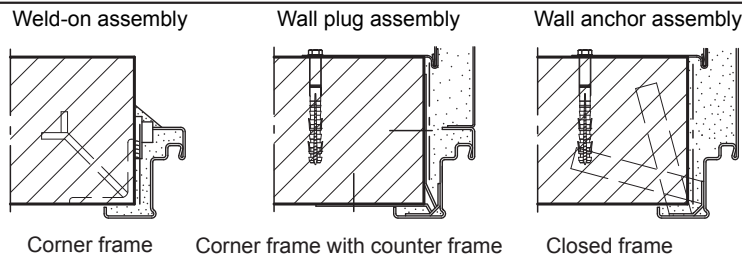
Floor connections:

Image 1:
With bottom seal
(smoke-proof door with top door closer)



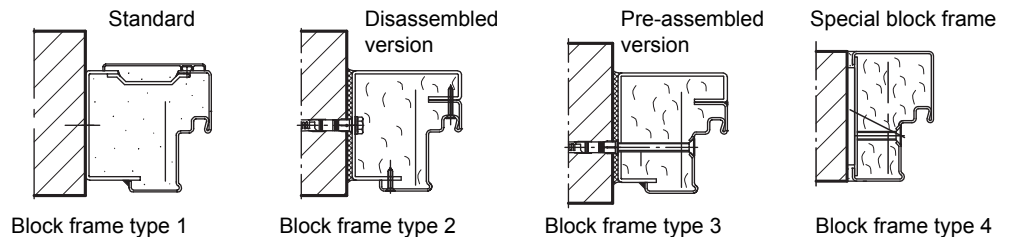
Installation in masonry/ concrete walls

concrete walls ≥ 100 mm
masonry walls ≥ 115 mm



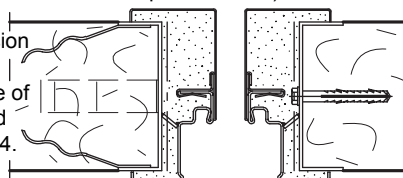
Installation with block frame

Flush installation between
concrete walls ≥ 100 mm
masonry walls ≥ 115 mm



Installation in autoclaved aerated concrete walls

(above modular dimension 1000x1000 with top door closer).
Made of autoclaved aerated concrete blocks or high precision units in accordance with DIN 4165 strength class 4 or made of reinforced auto/claved aerated concrete slabs strength class 4. Wall thickness min. 150 mm



Installation in installation walls

(above modular dimension 1000 x 1000 with top door closer)
Installation walls F90 in accordance with DIN 4102 Part 4 or in accordance with general building authority test certificate wall thickness min. 100 mm. For permissible walls refer to the Installation details tab

