

# Fire-Resistant Steel Door T 30-1-FSA

## “Teckentrup DF”

optionally with glazing optionally with upper casing/top light



### Text example

Compile and tender according to requirements. Please refer to Technical Data below for respective details. Updated 01.01.2011

Position	No. of pieces	Item	Unit price €	Total price €
		T 30-1-FSA fire-proof steel door tested in accordance with DIN 4102. Single-leaf door element. Type of handling DIN right. Door leaf galvanized and prime coated similar to RAL 9002 (grey white). 52 mm thick, <b>thick rebated</b> on 3-sides. Galvanized and prime coated corner frame similar to RAL 9002 (grey white). 2 mm thick, with 3-sided seal. Mortice lock with lever/knob in accordance with DIN 18250, prepared for profile cylinder. Black plastic handle set. Handle pivoted on bearing with tumbler insert (Bb) and 1 Bb key. 2 security bolts. FE/KO hinge set with ball bearings. “Teckentrup DF” (approval no.: Z-6.20-2037) or equivalent.		



### Technical data

#### Building authority approval:

Z-6.20-2037 tested in acc. with DIN 4102

#### Installation in:

- Walls made of:
- Masonry min. 115 mm
  - Concrete min. 100 mm
  - Lightweight construction stud wall \* (F90) in acc. with DIN 4102 Part 4 min. 100 mm \* For permissible walls refer to the Installation details tab
  - Autoclaved aerated concrete min. 150/175 mm (only for internal walls)

#### Approved dimensions:

Modular dimensions:  
Width: 625 – 1350 mm  
Height: 1750 – 3000 mm

#### With upper casing:

(door leaf 62 mm) Height: 4000 mm

#### Type of handling:

DIN right or DIN left

#### Door leaf:

Double-skinned **thick rebated** on 3 sides (**upper casing** rebated on 3 sides or made of frame profiles)  
Door leaf thickness: 52 mm up to 1350 x 2500 mm  
Door leaf thickness: 62 mm above 1350 x 2500 mm  
Door leaf thickness: 62 mm door leaf with upper casing  
Sheet thickness: 1 or 1.5 mm  
Security bolts: 2-3  
Reinforcement: Flat steel  
Insulation: Mineral fibre board  
Special equipment:  
Upper casing Sheet thickness: 1.5 mm

#### Frame:

Corner frame 2 mm thick with 3-sided seal and bottom sill  
With 3 welded-on wall anchor plugs on each side  
Fire protection strip in the upper part

Special equipment: Block frame and counter or closed frame

- Counter frame or closed frame required for installation in **lightweight construction stud walls**
- Installation in **autoclaved aerated concrete** without counter frame for doors up to 1250 x 2250 mm without glazing

#### Surface:

Galvanized and prime coated door leaf/frame similar to RAL 9002 (grey white)

#### Hinges and closing devices:

- 1 KO hinge with ball bearings, 1 spring hinge or
- 2 KO hinges with ball bearings and top door closer

#### Fittings:

- Mortice lock with lever/knob in acc. with DIN 18250 prepared for profile cylinder
- Black plastic handle set. Handle pivoted on bearing, with tumbler insert (Bb) and 1 Bb key.

#### Glazing:

Fire-resistant glass “Promaglas 30”, 17 mm thick with steel glass holding strips galvanized and prime coated,

grey white similar to RAL 9002. Max. pane dimension 1005 x 2167 mm round glazing Ø 300, Ø 400, Ø 500. Special equipment: Steel glass holding strips with additional aluminium cover strips Stainless steel round glazing holding strips

#### Special equipment:

- Handle sets / Lever/Knob sets:
  - Plastic
  - Light metal
  - Stainless steel
  - With short plate or rose escutcheon (various makes)
- Prepared for rose escutcheon
- Locks
  - Profile cylinder 40.5 + 30.5 mm (door leaf 52 mm)
  - Profile cylinder 45.5 + 35.5 mm (door leaf 62 mm)
  - Panic locks 35.5 + 45.5 mm
  - Block lock (must be provided/can also be supplied)
- Panic bar handle
- Top door closer DIN EN 1154
  - head assembly
  - with slide rail
  - with locking device
  - with smoke detector
  - integrated door closer ITS 96 (62 mm) fire protection
- For doors with glazing with top door closer
- For installation in lightweight construction stud walls with top door closer
- For installation in autoclaved aerated concrete walls with top door closer
- Bottom door closer DIN EN 1154
- Electric door opener
- Integrated lock inspector (bolt contact)
- Integrated opening indicator (Reed contact)
- Revolving door drives
- Hold-open devices
- Floor seals

#### Standard sizes:

Ordering dimensions/ Modular dimensions width x height	Clear opening dimensions width x height
750 x 2000	666 x 1958
750 x 2125	666 x 2083
875 x 1875	791 x 1833
875 x 2000	791 x 1958
875 x 2125	791 x 2083
1000 x 2000	916 x 1958
1000 x 2125	916 x 2083
1125 x 2000	1041 x 1958
1125 x 2125	1041 x 2083
1250 x 2000	1166 x 1958
1250 x 2125	1166 x 2083
1250 x 2250	1166 x 2208

#### Special sizes:

From 625 x 1750 mm to 1350 x 3000 mm

#### Further qualifications: (special version)



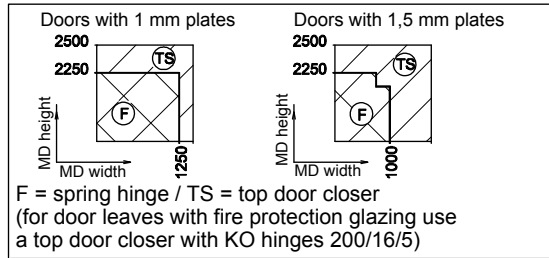
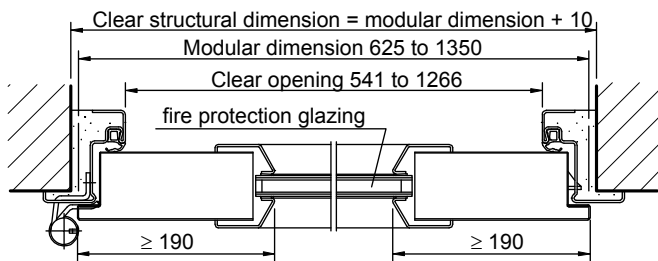
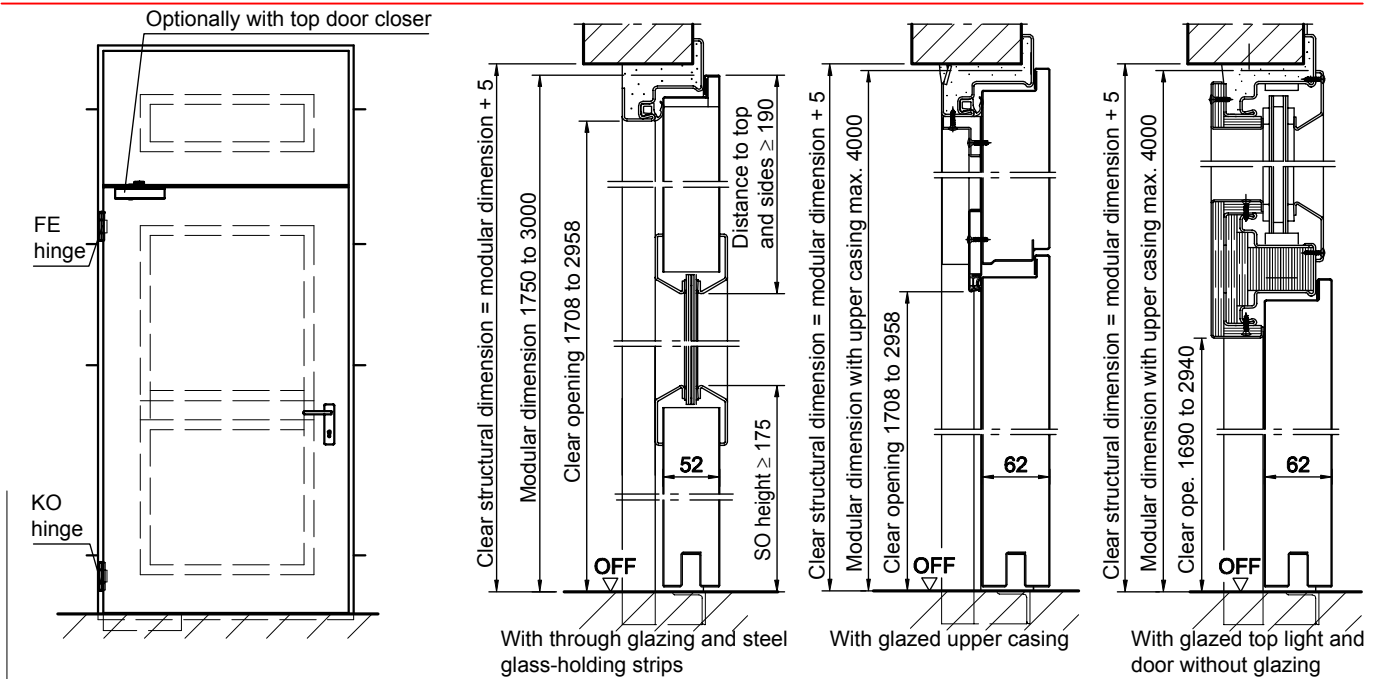
- ♦ **Smoke-proof in acc. with DIN 18095 with top door closer for solid and lightweight construction stud walls**
- ♦ **Sound insulated in acc. with DIN EN 20140/717 Part 1**  
**RW 38dB with retractable bottom seal**  
**RW 42dB with buffer strip**
- ♦ **Burglar-resistant in acc. with DIN V ENV 1627 WK 2** (up to a width of 1250 x height of 2500 mm)



# Fire-Resistant Steel Door T 30-1-FSA

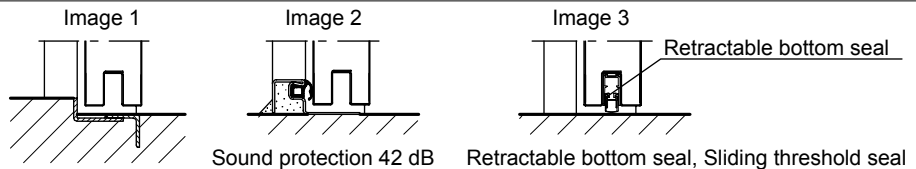
## “Teckentrup DF”

optionally with glazing optionally with upper casing/top light



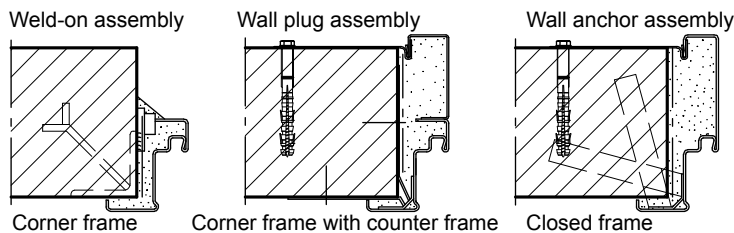
### Floor connections:

- Image 1: With bottom buffer
- Image 2: With bottom buffer/seal
- Image 3: With bottom seal (smoke-proof door with top door closer)



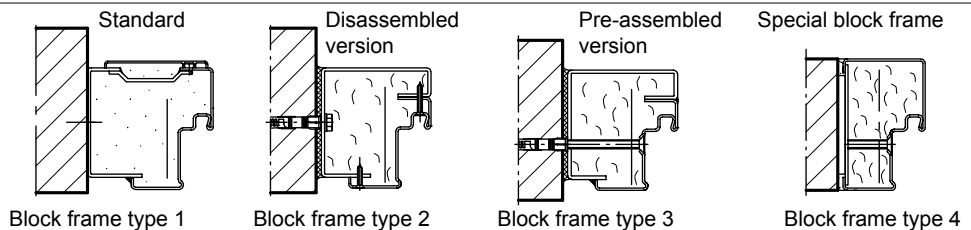
### Installation in masonry/ concrete walls

concrete walls  $\geq 100$  mm  
masonry walls  $\geq 115$  mm



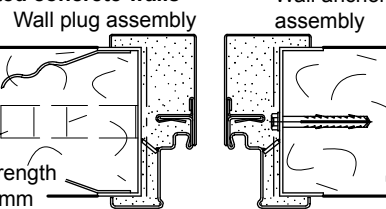
### Installation with block frame

Flush installation between concrete walls  $\geq 100$  mm  
masonry walls  $\geq 115$  mm



### Installation in autoclaved aerated concrete walls

(doors with top door closer). Made of autoclaved aerated concrete blocks or high precision units in accordance with DIN 4165 strength class 4 min. 175 mm or made of reinforced autoclaved aerated concrete slabs strength class 4. Wall thickness min. 150 mm



### Installation in installation walls

(lightweight construction stud walls) Installation walls F90 in accordance with DIN 4102 Part 4 or in accordance with general building authority test certificate wall thickness min. 100 mm. For permissible walls refer to the Installation details tab

