

Fire-Resistant Steel Door T 30-1-FSA

“Teckentrup 62“

optionally with glazing



Text example

Compile and tender according to requirements. Please refer to Technical Data below for respective details. Updated 01.11.2011

| Position | No. of pieces | Item | Unit price € | Total price € |
|----------|---------------|---|--------------|---------------|
| | | T 30-1-FSA fire-proof steel door tested in accordance with DIN 4102 (EN 1634-1). Single-leaf door element. Type of handling DIN right. Flush mounted door leaf with less protruding hinges. Galvanized and prime coated similar to RAL 9002 (grey white). 62 mm thick, rebated on 3-sides. Galvanized and prime coated corner frame similar to RAL 9002 (grey white). 1.5 mm thick with 3-sided seal. Mortice lock with lever/knob in accordance with DIN 18250, prepared for profile cylinder. Plastic handle set, black, handle pivoted on bearing with tumbler insert (Bb) and 1 Bb key. 1 security bolt. FE/KO hinge set with ball bearings. “Teckentrup 62” or equivalent. | | |



Technical data

Building authority approval:

Z-6.20-1923 tested in acc. with DIN 4102 (EN 1634-1)
Heat transfer coefficient in acc. with EN ISO 12567-1 (without glazing) $U_D = 1.6 \text{ W/m}^2\text{K}$

Installation in:

- Masonry min. 115 mm
- Concrete min. 100 mm
- Lightweight construction stud wall (F 90) min. 100 mm in acc. with DIN 4102 Part 4 or in acc. with general building authority test certificate For permissible walls refer to the Installation details tab
- Autoclaved aerated concrete in acc. with DIN 4165 min. 150 mm
- For reinforced autoclaved aerated concrete min. 150 mm
- Concealed steel parts F 60 in acc. with DIN 4102 Part4 or general building authority test certificate (only for internal walls)

Approved dimensions:

Modular dimension width: 625 – 1350 mm
Modular dimension height: 1750 – 2500 mm

Handling:

DIN right or DIN left

Door leaf:

Double-skinned, **thin rebated** on 3 sides
Door leaf thickness: 62 mm
Sheet thickness: 1 mm
Security bolt: 1

Frame:

Insulation: Mineral fibre board
Corner frame 1.5 mm thick, with 3-sided seal and bottom sill. Frame fixed with screws, 3 screws on each side
Special equipment: Block frame and counter frame or closed frame.

Surface:

Door leaf/Frame galvanized and prime coated, similar to RAL 9002 (grey white).

Hinges and closing devices:

- 1 KO hinge with ball bearings
- 1 spring hinge
- compensation rings for height adjustment

Fittings:

- Mortice lock with lever/knob in accordance with DIN 18250, prepared for profile cylinder
- Black plastic handle set. Handle pivoted on bearing with tumbler insert (Bb) and 1 Bb-key

Glazing:

Fire-resistant glass "Promaglas 30", 17 mm thick with prime coated steel glass holding strips, grey white similar to RAL 9002.
Max. pane dimensions 741 x 1658 mm.
Round glazing Ø 300, Ø 400 and Ø 500
Special equipment: Steel glass holding strips with additional aluminium cover strips

Special equipment:

- Handle sets / Lever/Knob sets:
 - Plastic
 - Light metal
 - Stainless steel
 - With short plate or rose escutcheon (various makes)
- Prepared for rose escutcheon
- Locks
 - Profile cylinder 40.5 + 40.5 mm
 - Panic locks
 - Block lock (must be provided/can also be supplied)
- Top door closer DIN EN 1154
 - head assembly
 - with locking device
 - with slide rail
 - with smoke detector
 - ITS 96 (hidden)
- For doors with glazing with top door closer
- For installation in lightweight construction stud walls with top door closer
- For installation in autoclaved aerated concrete walls with top door closer
- Electric door opener
- Integrated lock inspector (bolt contact)
- Integrated opening indicator (Reed contact)
- Revolving door drives
- Hold-open devices
- Floor seals can be retrofitted

Standard sizes:

| Ordering dimensions/Modular dimensions width x height | Clear opening dimensions (corner frame) width x height |
|---|--|
| 750 x 2000 | 666 x 1961 |
| 750 x 2125 | 666 x 2086 |
| 875 x 1875 | 791 x 1836 |
| 875 x 2000 | 791 x 1961 |
| 875 x 2125 | 791 x 2086 |
| 1000 x 2000 | 916 x 1961 |
| 1000 x 2125 | 916 x 2086 |
| 1125 x 2000 | 1041 x 1961 |
| 1125 x 2125 | 1041 x 2086 |
| 1250 x 2000 | 1166 x 1961 |
| 1250 x 2125 | 1166 x 2086 |
| 1250 x 2250 | 1166 x 2211 |

Special sizes: From 625 x 1750 mm to 1350 x 2500 mm

Further qualifications (special equipment):



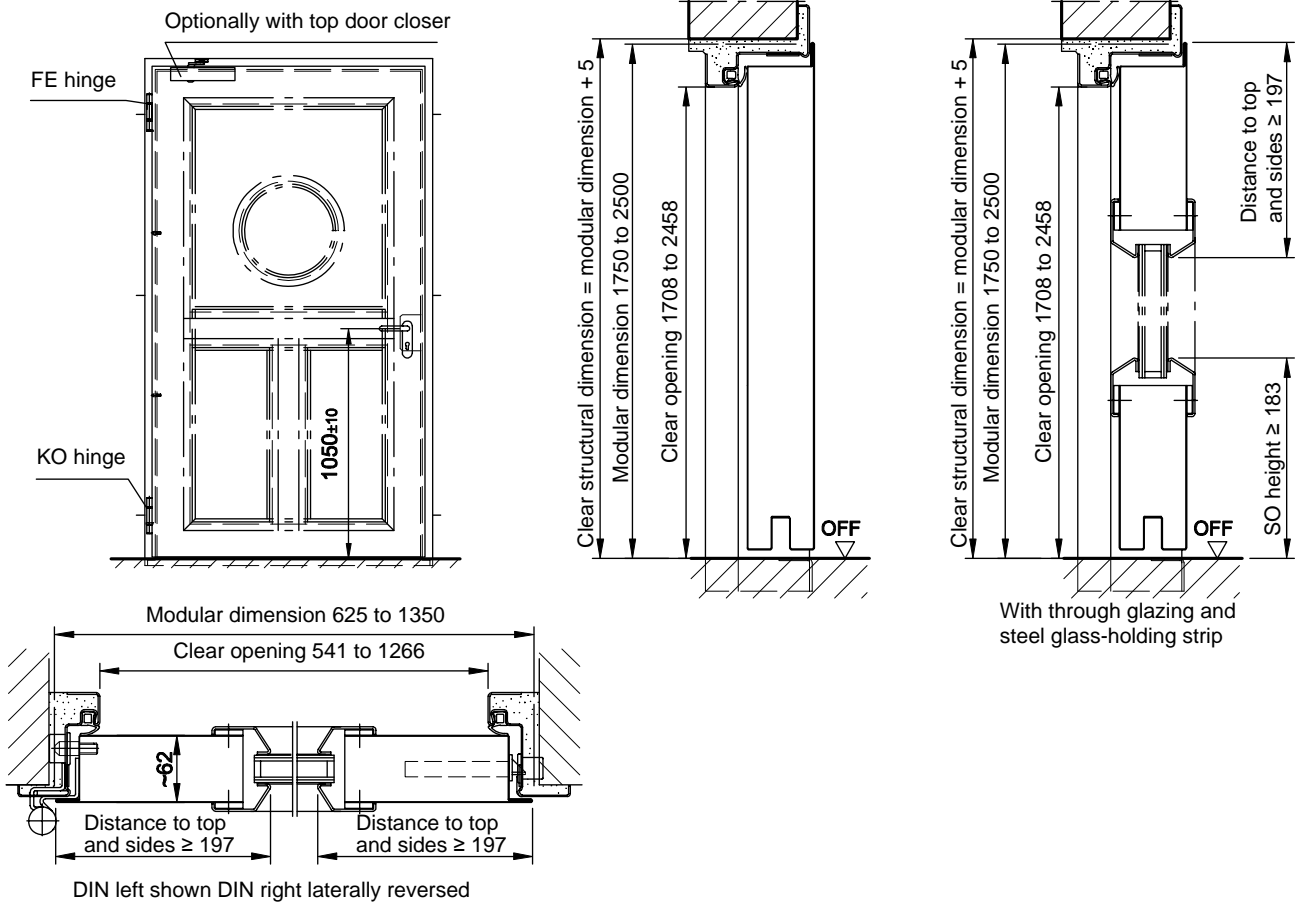
- ♦ **Smoke-proof in acc. with DIN 18095 with top door closer**
- ♦ **Burglar-resistant in acc. with DIN V ENV 1627 WK 2**
- ♦ **Sound insulated in acc. with DIN EN 20140/717**
Rw 37 dB with bottom buffer
Rw 35 dB with sliding threshold seal
Rw 37 dB with retractable bottom seal



Fire-Resistant Steel Door T 30-1-FSA

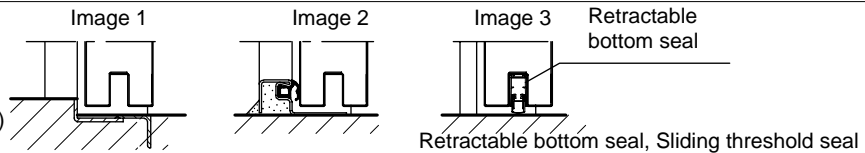
“Teckentrup 62”

optionally with glazing



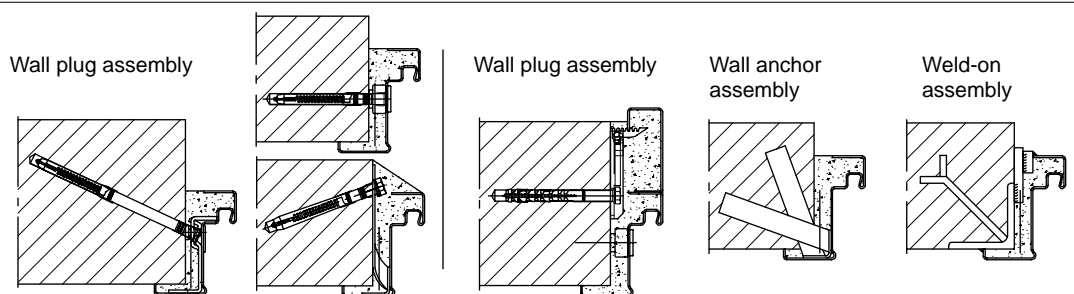
Floor connections:

Image 1: With bottom buffer
 Image 2: With bottom buffer/seal
 Image 3: With bottom seal
 (smoke-proof door with top door closer)



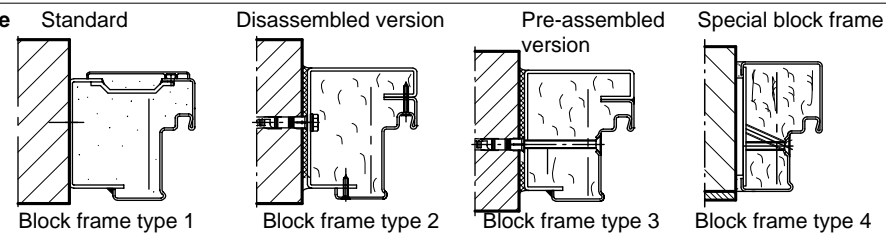
Installation in masonry/ concrete walls

concrete walls ≥ 100 mm
 masonry walls ≥ 115 mm



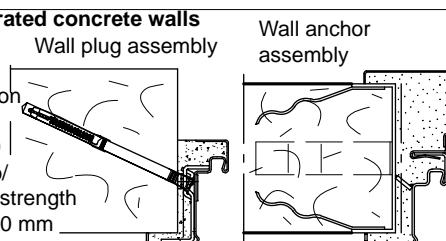
Installation with block frame

Flush installation between
 concrete walls ≥ 100 mm
 masonry walls ≥ 115 mm



Installation in autoclaved aerated concrete walls

(doors with top door closer).
 Made of autoclaved aerated
 concrete blocks or high precision
 units in accordance with DIN
 4165 strength class 4 min. 150
 mm or made of reinforced auto/
 claved aerated concrete slabs strength
 class 4. Wall thickness min. 150 mm



Installation in installation walls (lightweight construction stud walls)

(doors with top door closer) Installation walls F90 in accordance with DIN 4102 Part 4 or in accordance with general building authority test certificate wall thickness min. 100 mm. For permissible walls refer to the Installation details tab

