

Fire-Resistant Steel Door T 30-1

“Teckentrup HT 8-D”

can be used left/right handed



Text example

Compile and tender according to requirements.
Please refer to Technical Data below for respective details.
Updated 01.01.2011

Position	No. of pieces	Item	Unit price €	Total price €
		T 30-1 fire-proof steel door in accordance with DIN 4102. Single-leaf, left/right handed door element. Door leaf 42 mm thick, rebated on 4 sides. Corner frame with seal, 4-sided, 2 mm thick. Mortice lock with lever/knob, prepared for profile cylinder. Black plastic handle set. Handle pivoted on bearing, with tumbler insert (Bb) and 1 Bb key. 1 security bolt. FE/KO hinge set with ball bearings, “Teckentrup HT 8-D”, (approval no.: Z-6.12-1528) or equivalent.		



Technical data

Building authority approval:

Z-6.12-1528 tested in acc. with DIN 4102

Installation in:

- Walls made of:
- Masonry min. 115 mm
 - Concrete min. 100 mm
 - Lightweight construction stud walls * (min. F 30) in acc. with DIN 4102 Part 4 or in acc. with general building authority test certificate min. 100 mm

Approved dimensions:

Modular dimensions
Width: 625 – 1125 mm
Height: 1750 – 2125 mm

Handling:

Can be used left/right handed

Door leaf:

Double-skinned, **thin rebated** on 4 sides
Door leaf thickness: 42 mm
Sheet thickness: 0.9 mm
Security bolt: 1
Reinforcement: Flat steel
Insulation: Mineral fibre boards
Fire protection strips in the upper and lower door leaf area above a modular dimension of 1000 x 2000 mm

Frame:

4-side corner frame 2 mm thick with circumferential seal (sound insulation)
The design of the frame ensures that the bottom buffer can be removed.
With 3 welded-on wall anchor plugs on each side
Special equipment:
Counter frame

Surface:

Standard sizes:
Galvanized and powder coated door leaf/frame similar to RAL 9002 (grey white)

Hinges and closing devices:

- 1 KO hinge with ball bearings
- 1 spring hinge

Fittings:

- Mortice lock with lever/knob, prepared for profile cylinder
- Black plastic handle set
Handle pivoted on bearing, with tumbler insert (Bb) and 1 Bb key

Special equipment:

- Handle sets / Lever/Knob sets:
 - Plastic
 - Light metal
 - Stainless steel
 - With short plate or rose escutcheon (various makes)
- Prepared for rose escutcheon (specify type of handling)
- Locks
 - Profile cylinder 30.5 + 30.5 mm
 - Panic locks
- Top door closer DIN EN 1154
- Hold-open devices

Standard sizes:

Ordering dimensions/ Modular dimensions width x height	Clear opening dimensions width x height
750 x 1750	680 x 1711
750 x 1875	680 x 1836
750 x 2000	680 x 1961
800 x 1800	730 x 1761
800 x 1875	730 x 1836
800 x 2000	730 x 1961
875 x 1750	805 x 1711
875 x 1800	805 x 1761
875 x 1875	805 x 1836
875 x 2000	805 x 1961
875 x 2125	805 x 2086
1000 x 1875	930 x 1836
1000 x 2000	930 x 1961
1000 x 2125	930 x 2086
1125 x 2000	1055 x 1961
1125 x 2125	1055 x 2086

Special sizes: See T 30-1-FSA door “Teckentrup 42”

* For permissible walls refer to the Installation details tab

Further qualifications (special equipment):



- ♦ **Smoke-proof in acc. with DIN 18095 with top door closer for solid walls**



- ♦ **Sound insulated in acc. with DIN EN 20140/717 Part 1
RW 39dB with bottom buffer (standard)
RW 37dB with sliding threshold seal**



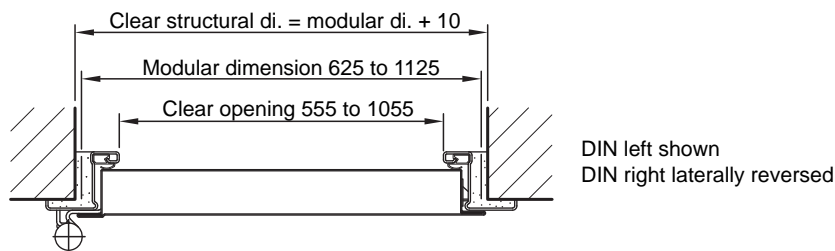
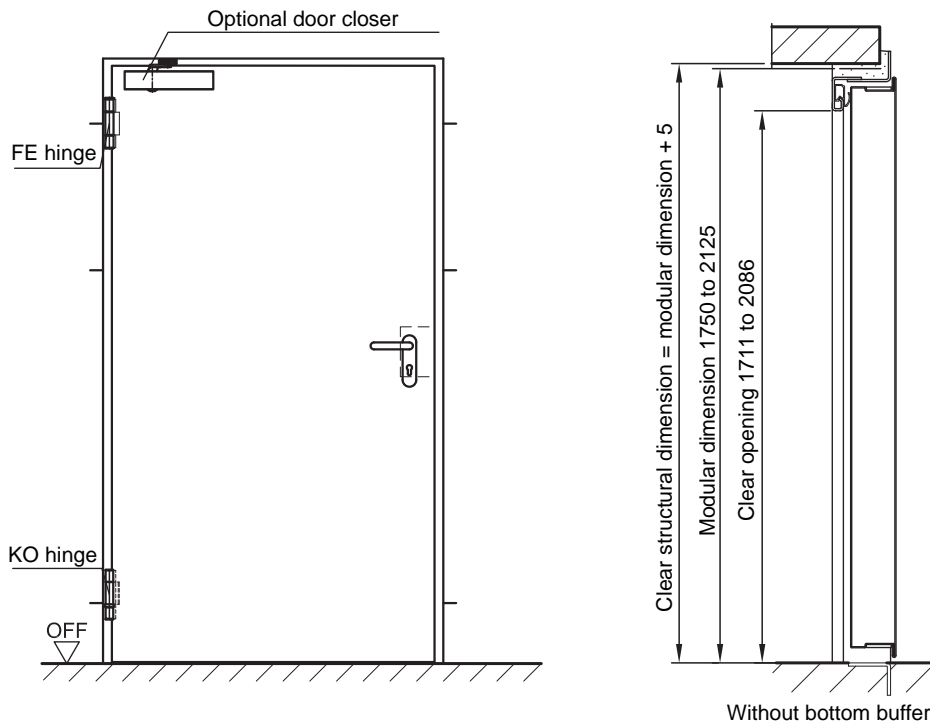
- ♦ **Burglar resistant in acc. with DIN V ENV 1627-WK2**



Fire-Resistant Steel Door T 30-1

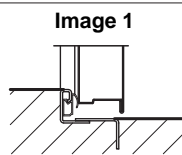
„Teckentrup HT 8-D“

can be used left/right handed

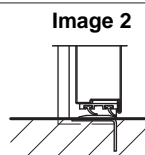


Floor connections:

Image 1:
With bottom buffer/seal
Image 2: With bottom seal



Sound protection 39 dB



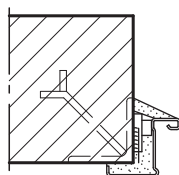
Teckentrup double sliding threshold seal.
Specify type of handling!

(smoke-proof door with top door closer)

Installation in masonry/ concrete walls

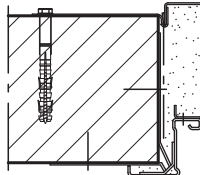
concrete walls ≥ 100 mm
masonry walls ≥ 115 mm

Weld-on assembly



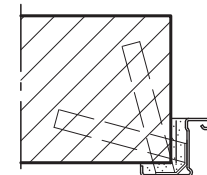
Corner frame

Wall plug assembly



Corner frame with counter frame

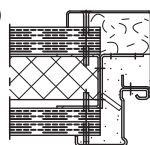
Wall anchor assembly



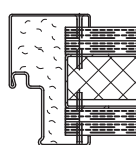
Corner frame

Installation in installation walls (lightweight construction stud walls)

(doors with top door closer)
Installation walls F30 in accordance
with DIN 4102 Part 4 or in accordance
with general building authority test certificate wall thickness
min. 100 mm. For permissible walls
refer to the Installation details tab



Corner frame with counter frame



Closed frame