

Fire-Resistant Steel Door T 30-1-FSA

“Teckentrup OS“

optionally with glazing optionally with upper casing



Text example

Compile and tender according to requirements.
Please refer to Technical Data below for respective details.
Updated 01.01.2011

Position	No. of pieces	Item	Unit price €	Total price €
		T 30-1-FSA fire-proof steel door tested in accordance with DIN 4102. Single-leaf door element. Type of handling DIN right. Galvanized and prime coated door leaf similar to RAL 9002 (grey white), 52 mm thick, rebated on 3-sides. Galvanized and prime coated corner frame similar to RAL 9002 (grey white). 2 mm thick, with 3-sided seal. Mortice lock with lever/knob in accordance with DIN 18250, prepared for profile cylinder. Black plastic handle set. Handle pivoted on bearing with tumbler insert (Bb) and 1 Bb key. 3 security bolts. FE/KO hinge set with ball bearings. “Teckentrup OS“ (approval no.: Z-6.20-1948) or equivalent.		



Technical data

Building authority approval:

Z-6.20-1948 tested in acc. with DIN 4102
Heat transfer coefficient in acc. with EN ISO 12567-1 (without glazing) $U_D = 1.8 \text{ W/m}^2\text{K}$

Installation in: Walls made of:

- Masonry \leq BRM 1500 x 3000 min. 115 mm
 $>$ BRM 1500 x 3000 min. 175 mm
- Concrete \leq BRM 1500 x 3000 min. 100 mm
 $>$ BRM 1500 x 3000 min. 140 mm
- Autoclaved aerated concrete in acc. with DIN 4165 \leq BRM 1350 x 2500 min. 115 mm
 \leq BRM 1500 x 3000 min. 150 mm
 $>$ BRM 1500 x 3000 min. 200 mm
- For reinforced autoclaved aerated concrete \leq BRM 1350 x 2500 min. 115 mm
 \leq BRM 1500 x 3000 min. 150 mm
 $>$ BRM 1500 x 3000 min. 175 mm
- Lightweight construction stud wall (F 90) in acc. with DIN 4102 Part 4 or in acc. with general building authority test certificate. For permissible walls refer to the Installation details tab (max. 1500 x 3000 mm) min. 100 mm

Approved dimensions:

Modular dimensions
Width: 500 – 1500 mm
Height: 1750 – 4000 mm

With upper casing: Height: 4600 mm

Type of handling: DIN right or DIN left

Door leaf:

Double-skinned, **thin rebated** on 3 sides (upper casing rebated on 4 sides)
Door leaf thickness up to 1350 x 2500 mm: 52 mm
Door leaf thickness $>$ 1350 x 2500 mm: 62 mm
Sheet thickness: 1,0/1,5 mm
Security bolts: 3-5
Reinforcement: Flat steel
Insulation: Mineral fibre board
Special equipment:
Upper casing sheet thickness: 1.5 mm

Frame:

Corner frame 2 mm thick with 3-sided seal and bottom sill. 3 wall anchor plugs on each side.
Fire protection strips.
Special equipment: Block frame and counter frame or closed frame
• Counter or closed frame required for installation in lightweight construction stud walls/autoclaved aerated concrete

Surface:

Galvanized and prime coated door leaf/frame similar to RAL 9002 (grey white)

Hinges and closing devices:

- 1 KO hinge with ball bearings
- 1 spring hinge or 2 KO hinges with top door closer

Fittings:

- Mortice lock with lever/knob in acc. with DIN 18250, prepared for profile cylinder
- Mortice lock with lever/knob and 2 bolt locks (for WK 4)
- Black plastic handle set handle pivoted on bearing with tumbler insert (Bb) and 1 Bb key
- Security fitting with profile cylinder 3 keys and security certificate (for WK 2 - WK 4)

Glazing:

Fire-resistant glass “Promaglas 30”, 17 mm thick with steel holding glass strips galvanized and prime coated, grey white similar to RAL 9002. Max. pane dimensions 900 x 1800 mm, round glazing \varnothing 300, \varnothing 400 and \varnothing 500.

Special equipment:

Special equipment:
Steel glass holding strips with additional aluminium cover strips

- Handle sets / Lever/Knob sets:
 - Plastic
 - Light metal
 - Stainless steel
 - With short plate or rose escutcheon (various makes)
- Prepared for rose escutcheon
- Locks
 - Profile cylinder 35.5 + 35.5 mm panic locks
 - Block lock (must be provided/can also be supplied)
- Panic handle bar
- Top door closer DIN EN 1154
 - head assembly
 - with slide rail
 - with locking device
 - with smoke detector
 - integrated door closer (hidden)
- For doors with glazing with top door closer
- For installation in lightweight construction stud walls/autoclaved aerated concrete walls with top door closer
- Bottom door closer DIN EN 1154
- Electric door opener
- Integrated lock inspector (bolt contact)
- Integrated opening indicator (Reed contact)
- Revolving door drives
- Hold-open devices
- Floor seals can now be retrofitted

Standard sizes:

Ordering dimensions/Modular dimensions width x height	Clear opening dimensions width x height
750 x 2000	666 x 1958
750 x 2125	666 x 2083
875 x 1875	791 x 1833
875 x 2000	791 x 1958
875 x 2125	791 x 2083
1000 x 2000	916 x 1958
1000 x 2125	916 x 2083
1125 x 2000	1041 x 1958
1125 x 2125	1041 x 2083
1250 x 2000	1166 x 1958
1250 x 2125	1166 x 2083
1250 x 2250	1166 x 2208

Special sizes: From 500 x 1750 mm to 1500 x 4000 mm

Further qualifications (special equipment):

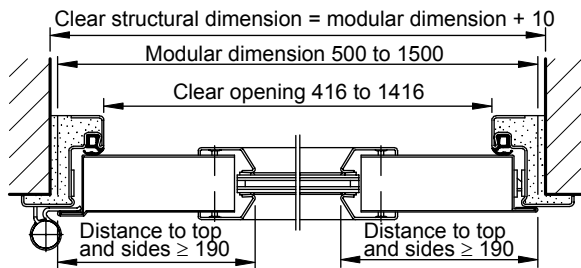
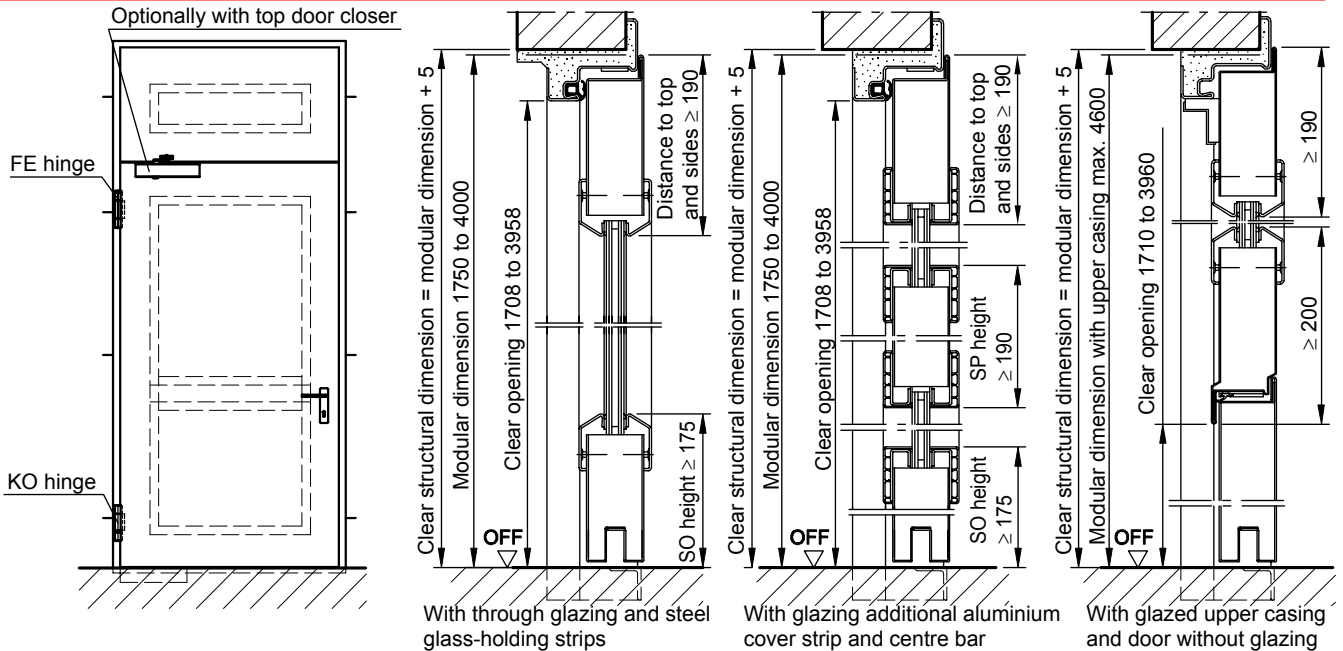
- **Smoke proof in acc. with DIN 18095** with top door closer for solid and lightweight construction stud walls (with upper casing up to a modular dimension of 4000 mm)
- **Sound insulation in acc. with DIN EN 20140**
- **Burglar-resistant in acc. with DIN V ENV 1627-WK 2, WK 3 and WK 4 up to a modular dimension of 1350 x 2500 mm**



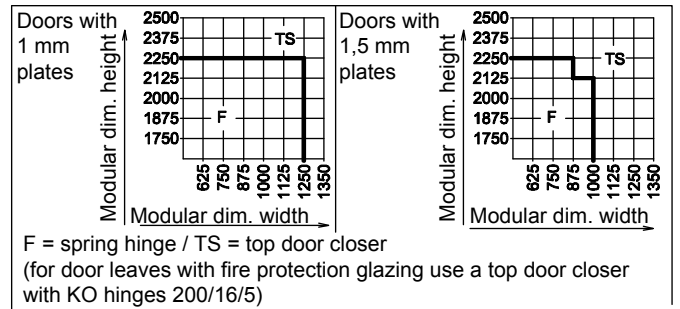
Fire-Resistant Steel Door T 30-1-FSA

“Teckentrup OS“

optionally with glazing optionally with upper casing

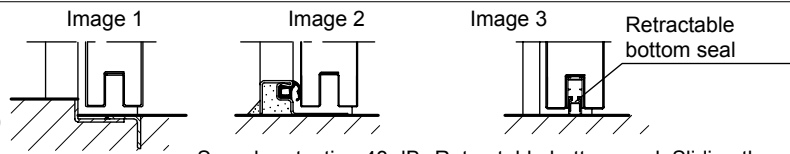


DIN left shown DIN right laterally reversed



Floor connections:

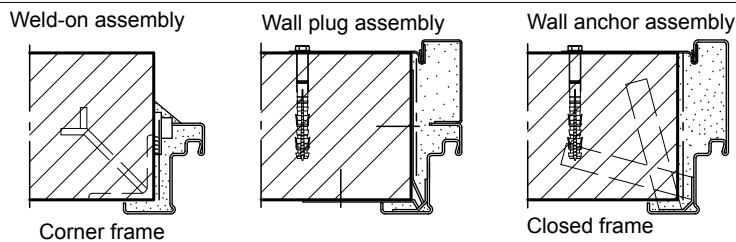
- Image 1: With bottom buffer
- Image 2: With bottom buffer/seal
- Image 3: With bottom seal (smoke-proof door with top door closer)



Sound protection 43 dB Retractable bottom seal, Sliding threshold seal

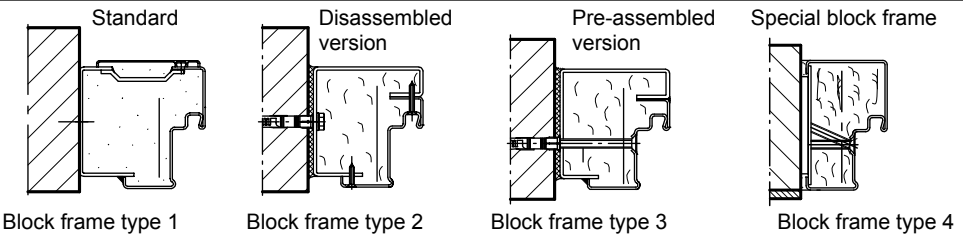
Installation in masonry/ concrete walls

concrete walls ≥ 100 mm
masonry walls ≥ 115 mm



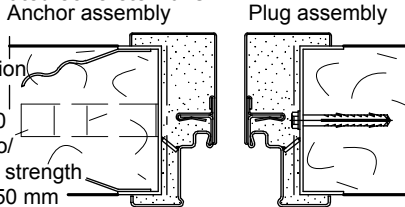
Installation with block frame

Flush installation between concrete walls ≥ 100 mm
masonry walls ≥ 115 mm



Installation in autoclaved aerated concrete walls

(doors with top door closer). Made of autoclaved aerated concrete blocks or high precision concrete blocks or in accordance with DIN 4165 strength class 4 min. 150 mm or made of reinforced autoclaved aerated concrete slabs strength class 4. Wall thickness min. 150 mm



Installation in installation walls

(lightweight construction stud walls) (doors with top door closer) Installation walls F90 in accordance with DIN 4102 Part 4 or in accordance with general building authority test certificate wall thickness min. 100 mm. For permissible walls refer to the Installation details tab

