

Fire-Resistant Steel Door T 30-2-FSA

“Teckentrup 42”

optionally with glazing



Text example

Compile and tender according to requirements.
Please refer to Technical Data below for respective details.
Updated 01.11.2011

Position	No. of pieces	Item	Unit price €	Total price €
		T 30-2 FSA fire-proof steel door tested in accordance with DIN 4102 (EN 1634-1). Double-leaf door element. Flush mounted door leaf with less protruding hinges. Active door leaf DIN right. Door leaf 42 mm thick, rebated on 3 sides. Corner frame 2 mm thick, with 3-sided seal. Door leaf/Frame galvanized and powder coated, similar to RAL 9002 (grey white). Active door leaf with mortice lever/knob lock in accordance with DIN 18250, prepared for profile cylinder. Black plastic handle set. Handle pivoted on bearing, with tumbler insert (Bb) and 1 Bb key. Inactive door leaf with central rebate profile and rebate lever bolt. 2 security bolts per leaf. 2 two-piece hinges and a top door closer. 1 door selector. “Teckentrup 42” (approval no. Z-6.20-1956) or equivalent.		



Technical data

Building authority approval:

Z-6.20-1956 tested in acc. with DIN 4102 (EN 1634-1)

Installation in:

- Masonry min. 115 mm
- Concrete min. 100 mm
- Lightweight construction * wall (min. F30) in acc. with DIN 4102 Part 4 or in acc. with general building authority test certificate min. 88 mm
- Autoclaved aerated concrete (only for internal walls) min. 150/115 mm
- Covered wood beams F 60

Approved dimensions:

Modular dimensions:
Width: 1375 – 2500 mm
Height: 1750 – 2500 mm

Handling:

Active door leaf DIN right or DIN left

Door leaf:

Double-skinned **thin rebated** on 3 sides
Door leaf thickness: 42 mm
Sheet thickness: 1 mm
Security bolts per leaf: 2
Reinforcement: Flat steel
Insulation: Mineral fibre board
Inactive door leaf with central rebate profile (central rebate seal)
Fire protection strips in the central rebate profile

Frame:

Corner frame, 2 mm thick, with 3-sided seal and bottom sill.
Frame fixed with screws, 3 screws per side
Special equipment:
Block frame and counter or closed frame

- Counter frame or closed frame required for installation in lightweight construction stud walls/autoclaved aerated concrete

Surface:

Galvanized and powder coated door leaf/frame similar to RAL 9002 (grey white)

Hinges and closing devices:

- 4 two-piece hinges with ball bearings
- 2 top door closers DIN EN 1154
- 1 door selector
- compensation rings for height adjustment

Fittings:

Active door leaf:
• Mortice lock with lever/knob in acc. with DIN 18250, prepared for profile cylinder
• Black plastic handle set
Handle pivoted on bearing, with tumbler insert (Bb) and 1 Bb key
Inactive door leaf:
• Rebate lever bolt in the central rebate profile, upward locking

Glazing:

Fire-resistant glass "Promaglas 30", 17 mm thick with steel holding strips galvanized and powder coated, grey-white, similar to RAL 9002. Max. pane size 885 x 1664 mm. Round glazing Ø 400 and Ø 500

Special equipment: Steel glass holding strips with additional aluminium cover strips

Special equipment:

- Handle sets:
 - Plastic · Light metal
 - Stainless steel
 - With short plate or rose escutcheon (various makes)
- Prepared for rose escutcheon
- Locks
 - Profile cylinder 30.5 + 30.5 mm
 - Safety catch with safety catch handle on the opposite hinge side
 - Panic locks
 - Block lock (must be provided/can also be supplied)
- Panic bar handle
- Top door closer DIN EN 1154
 - head assembly · with locking device
 - with smoke detector
- Integrated lock inspector (bolt contact)
- Integrated opening indicator (Reed contact)
- Hold-open devices
- Floor seals

Standard sizes:

Ordering dimensions/ Modular dimensions width x height	Clear opening Dimensions (corner frame) width x height
1500 x 2000	1430 x 1965
1500 x 2125	1430 x 2090
1750 x 2000	1680 x 1965
1750 x 2125	1680 x 2090
2000 x 2000	1930 x 1965
2000 x 2125	1930 x 2090
2000 x 2500	1930 x 2465
2125 x 2125	2055 x 2090
2250 x 2250	2180 x 2215
2500 x 2500	2430 x 2465

Special sizes: From 1375 x 1750 mm to 2500 x 2500 mm

Further qualifications (special equipment):



- ♦ **Smoke proof in acc. with DIN 18095**
For solid and lightweight construction stud walls



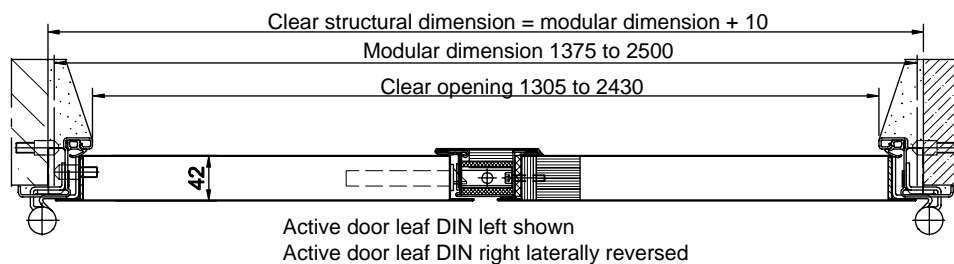
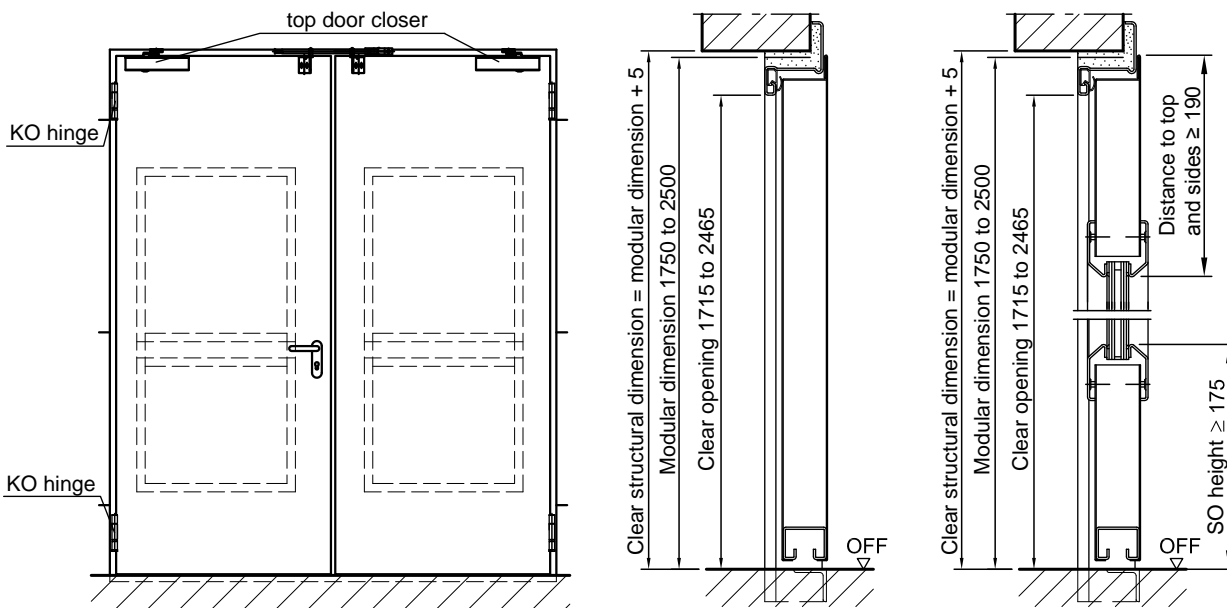
- ♦ **Sound insulation in acc. with DIN EN 20140**
Rw 37 dB with bottom buffer and seal
Rw 37 dB with retractable bottom seal
Rw 35 dB with sliding threshold seal

*For permissible walls refer to the Installation details tab.

Fire-Resistant Steel Door T 30-2-FSA

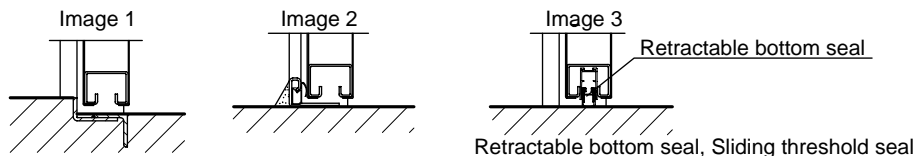
“Teckentrup 42”

optionally with glazing



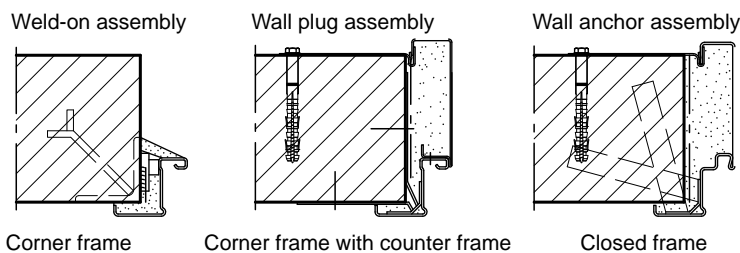
Floor connections:

- Image 1: With bottom buffer
- Image 2: With bottom buffer/seal
- Image 3: With bottom seal (smoke-proof door with top door closer)



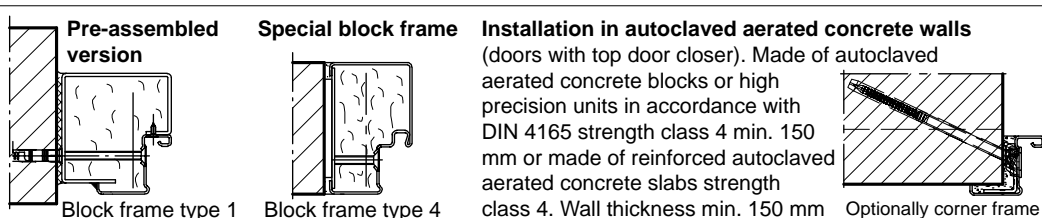
Installation in masonry/ concrete walls

concrete walls ≥ 100 mm
masonry walls ≥ 115 mm



Installation with block frame

Flush installation between concrete walls ≥ 100 mm
masonry walls ≥ 115 mm



Installation in installation walls (lightweight construction stud walls)

(doors with top door closer)
Installation walls F90 in accordance with DIN 4102 Part 4 or in accordance with general building authority test certificate wall thickness min. 100 mm. For permissible walls refer to the Installation details tab

