

Fire-Resistant Steel Door T 30-2-FSA

“Teckentrup 62“

optionally with glazing



Text example

Compile and tender according to requirements.
Please refer to Technical Data below for respective details.
Updated 01.11.2011

Position	No. of pieces	Item	Unit price €	Total price €
		T 30-2-FSA fire-proof steel door tested in accordance with DIN 4102 (EN 1634-1). Double-leaf door element. Type of handling DIN right. Flush-mounted door leaf with less protruding hinges. Galvanized and prime coated similar to RAL 9002 (grey white). 62 mm thick, rebated on 3-sides. Galvanized and prime coated corner frame similar to RAL 9002 (grey white). 1.5 mm thick, with 3-sided seal. Mortice lock with lever/knob in accordance with DIN 18250, prepared for profile cylinder. Black plastic handle set, handle pivoted on bearing, with tumbler insert (Bb) and 1 Bb key. Inactive door leaf with rebate lever bolt with standard upward locking mechanism. 2 security bolts per leaf. 2 two-piece hinges, 2 top door closers in accordance with DIN EN 1154, 1 door selector. “Teckentrup 62” or equivalent.		



Technical data

Building authority approval:

Z-6.20-1923 tested in acc. with DIN 4102 (EN 1634-1)
Heat transfer coefficient in acc. with EN ISO 12567-1 (without glazing) $U_D = 1.6 \text{ W/m}^2\text{K}$

- Installation in:**
- Masonry min. 115 mm
 - Concrete min. 100 mm
 - Lightweight construction stud wall (F 90) min. 100 mm in acc. with DIN 4102 Part 4 or in acc. with general building authority test certificate
For permissible walls refer to the Installation details tab
 - Autoclaved aerated concrete in acc. with DIN 4165 min. 150 mm
 - For reinforced autoclaved aerated concrete min. 150 mm
 - Concealed steel parts F 60 in acc. with DIN 4102 Part 4 or general building authority test certificate (only for internal walls)

Approved dimensions:

Modular dimension width: 1375 – 2500 mm
Modular dimension height: 1750 – 2500 mm

Handling:

DIN right or DIN left

Door leaf:

Double-skinned **thin rebated** on 3 sides
Door leaf thickness: 62 mm
Sheet thickness: 1 mm
Security bolts per leaf: 2
Insulation: Mineral fibre board

Frame:

Corner frame 1.5 mm thick, with 3-sided seal and bottom sill. Frame fixed with screws, 3 screws on each side
Special equipment: Block frame and counter frame or closed frame

Surface:

Door leaf/Frame galvanized and prime coated, similar to RAL 9002 (grey white).

Hinges and closing devices:

- 4 KO hinges with ball bearings
- 2 top door closers
- 1 door selector
- compensation rings for height adjustment

Fittings:

Active door leaf:

- Mortice lock with lever/knob prepared for profile cylinder in acc. with DIN 18250. FS round handle set black (plastic). Handle pivoted on bearing, with tumbler insert (Bb) and 1 Bb key.

 Inactive door leaf:

- Inactive leaf with rebate lever bolt with standard upward locking mechanism.

Glazing:

Fire-resistant glass "Promaglas 30", 17 mm thick with prime coated steel glass holding strips, grey white similar to RAL 9002.

Max. pane dimensions 741 x 1658 mm
Round glazing Ø 300, Ø 400 and Ø 500
Special equipment:

Steel glass holding strips with additional aluminium cover strips

Special equipment:

- Handle sets / Lever/Knob sets:
 - Plastic
 - Light metal
 - Stainless steel
 - With short plate or rose (various makes) escutcheon
- Prepared for rose escutcheon
- Locks
 - Profile cylinder 40.5 + 40.5 mm
 - Panic locks
 - Block lock (must be provided/can also be supplied)
- Top door closer DIN EN 1154
 - head assembly
 - with slide rail
 - with locking device
 - with smoke alarm
 - ITS 96 (hidden)
- Panic locks
- Secured drive lock
- Electric door opener
- Integrated lock inspector (bolt contact)
- Integrated opening indicator (Reed contact)
- Revolving door drives
- Hold-open devices
- Floor seals can be retrofitted
- Central rebate seal

Standard sizes:

Ordering dimensions/Modular dimensions width x height	Clear opening dimensions (corner frame) width x height
1500 x 2000	1416 x 1961
1500 x 2125	1416 x 2086
1750 x 2000	1666 x 1961
1750 x 2125	1666 x 2086
2000 x 2000	1916 x 1961
2000 x 2125	1916 x 2086
2000 x 2500	1916 x 2461
2125 x 2125	2041 x 2086
2250 x 2250	2166 x 2211
2500 x 2500	2416 x 2461

Special sizes: From 1375 x 1750 mm to 2500 x 2500 mm

Further qualifications (special equipment):



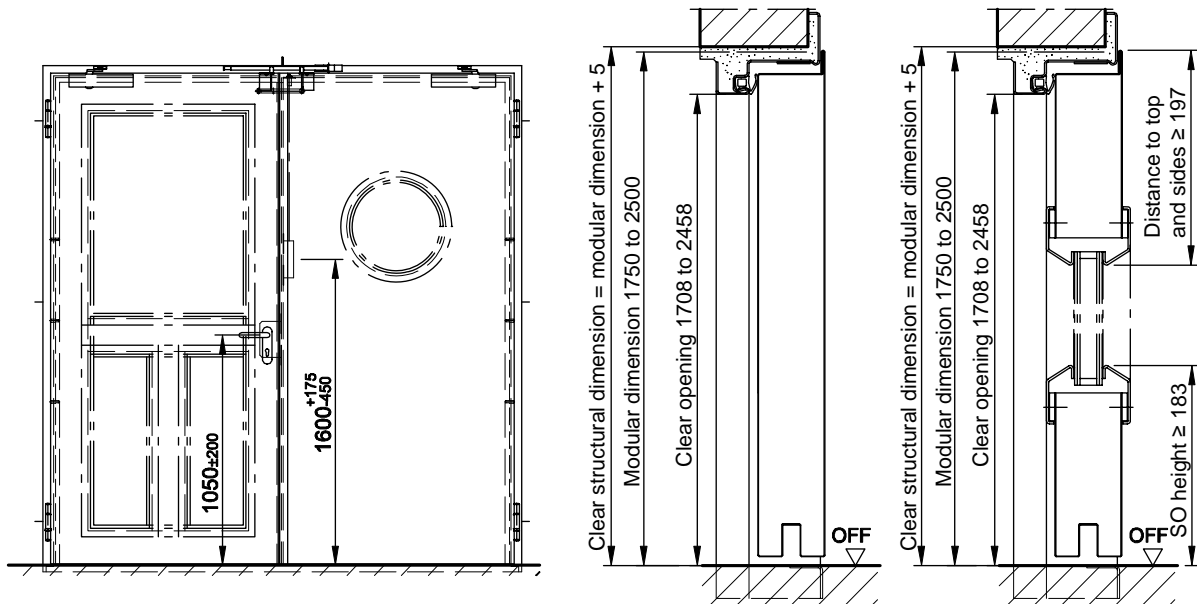
- Smoke-proof in acc. with DIN 18095 with top door closer
- Burglar-resistant in acc. with DIN V ENV 1627-WK 2
- Sound insulated in acc. with DIN EN 20140/717
 - Rw 38 dB with bottom buffer
 - Rw 37 dB with sliding threshold seal
 - Rw 38 dB with retractable bottom seal



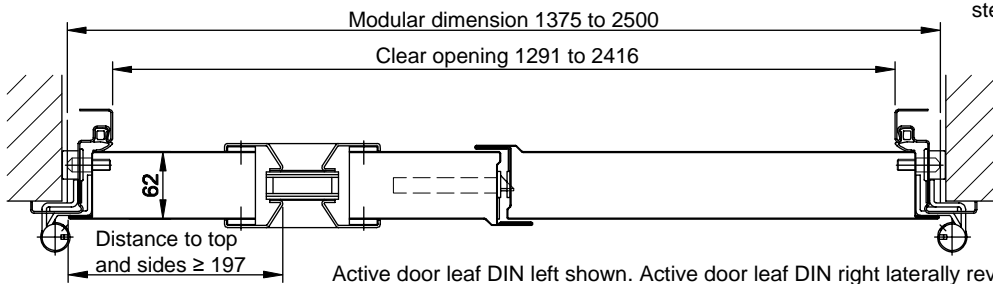
Fire-Resistant Steel Door T 30-2-FSA

“Teckentrup 62”

optionally with glazing



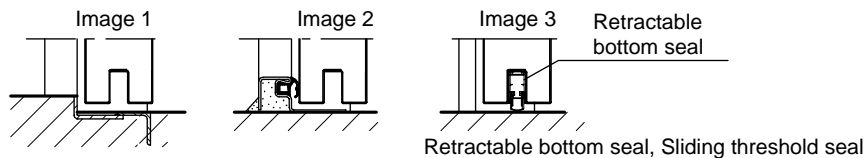
With through glazing and steel glass-holding strip



Active door leaf DIN left shown. Active door leaf DIN right laterally reversed

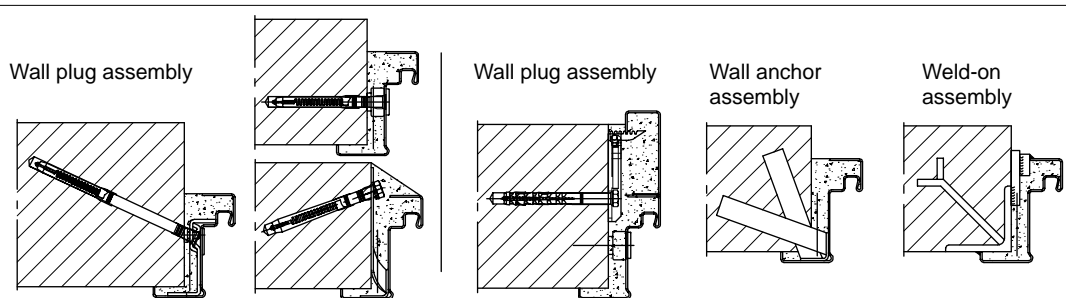
Floor connections:

- Image 1: With bottom buffer
- Image 2: With bottom buffer/seal
- Image 3: With bottom seal (smoke-proof door with top door closer)



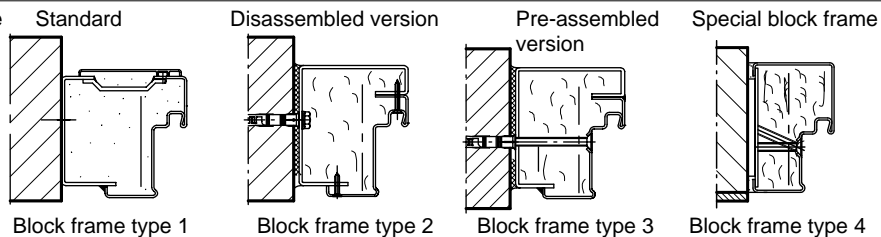
Installation in masonry/ concrete walls

concrete walls ≥ 100 mm
masonry walls ≥ 115 mm



Installation with block frame

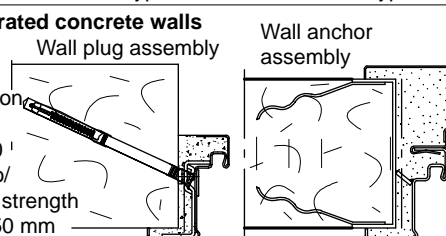
Flush installation between concrete walls ≥ 100 mm
masonry walls ≥ 115 mm



Block frame type 1 Block frame type 2 Block frame type 3 Block frame type 4

Installation in autoclaved aerated concrete walls

(doors with top door closer). Made of autoclaved aerated concrete blocks or high precision units in accordance with DIN 4165 strength class 4 min. 150 mm or made of reinforced autoclaved aerated concrete slabs strength class 4. Wall thickness min. 150 mm



Installation in installation walls (lightweight construction stud walls)(doors with top door closer) Installation walls F90 in accordance with DIN 4102 Part 4 or in accordance with general building authority test certificate wall thickness min. 100 mm. For permissible walls refer to the Installation details tab

