

Fire-Resistant Steel Door T 90-1-FSA

“Teckentrup DF”

optionally with glazing



Text example

Compile and tender according to requirements. Please refer to Technical Data below for respective details. Updated 01.01.2011

Position	No. of pieces	Item	Unit price €	Total price €
		T 90-1-FSA fire-proof steel door tested in accordance with DIN 4102. Single-leaf door element. Type of handling DIN right. Door leaf galvanized and prime coated similar to RAL 9002 (grey white). 62 mm thick, thick rebated on 3-sides. Corner frame, 2 mm thick, with 3-sided seal. Mortice lock with lever/knob in accordance with DIN 18250, prepared for profile cylinder. Black plastic handle set. Handle pivoted on bearing with tumbler insert (Bb) and 1 Bb key. 3 security bolts. 2 three-piece hinges with ball bearings, top door closer in accordance with DIN EN 1154 “Teckentrup DF”. (approval no. Z-6.20-2057) or equivalent.		



Technical data

Building authority approval:

Z-6.20-2057 tested in acc. with DIN 4102

Installation in:

- Walls made of:
- Masonry min. 175 mm / (240 mm)
 - Concrete min. 140 mm
 - *Lightweight construction stud wall (F90) min. 100 mm
 - Autoclaved aerated concrete block in acc. with DIN 4165 or made of reinforced autoclaved aerated concrete slabs min. 175 mm

*For permissible walls refer to the Installation details tab.

Approved dimensions:

Modular dimensions:
Width: 625 – 1350 (1500) mm
Height: 1750 – 3000 (3500) mm
() = Door leaf thickness 64 mm

Type of handling:

DIN right or DIN left

Door leaf:

Double-skinned, **thick rebated** on 3 sides,
Door leaf thickness: 62/64 mm
Sheet thickness: 1 mm or 1.5 mm
security bolts: 3
Reinforcement: Flat steel
Insulation: Mineral fibre board and gypsum boards
Special equipment: sheet thickness 1.5 mm

Frame:

Corner frame, 2 (3) mm thick, with 3-sided bottom seal and sill. With 3 welded-on wall anchor each plugs on side
Special equipment:
Block frame and counter or closed frame
• Counter frame or closed frame required for installation in **lightweight construction stud walls** (up to 1350 x 3000 mm)
• Installation in **autoclaved aerated concrete** (up to 1350 x 3000 mm) without counter frame for doors up to 1250 x 2250 mm without glazing

Surface:

Door leaf/Frame galvanized and prime coated, similar to RAL 9002 (grey white).

Hinges and closing devices:

- 2 three-piece KO hinges with ball bearings
- 1 top door closer DIN EN 1154

Fittings:

- Mortice lock with lever/knob in accordance with DIN 18250 prepared for profile cylinder
- Black plastic handle set
Handle pivoted on bearing, with tumbler insert (Bb) and 1 Bb key

Glazing:

Fire-resistant glass "Promaglas 90/37", 37 mm thick

with steel glass holding strips galvanized and prime coated, grey white similar to RAL 9002. Max. pane dimensions 740 x 2005 mm. Round glazing Ø 300, Ø 400, Ø 500. Special equipment: Steel glass-holding strips with additional aluminium cover strips. Round glazing - stainless steel glass-holding strips

Special equipment:

- Handle sets / Lever/Knob sets:
 - Plastic
 - Light metal
 - Stainless steel
 - With short plate or rose escutcheon (various makes)
- Prepared for rose escutcheon
- Locks
 - Profile cylinder 45.5 + 35.5 mm
 - Panic locks
 - Block lock (must be provided/can also be supplied)
- Panic bar handle
- Top door closer DIN EN 1154
 - head assembly
 - with slide rail
 - with locking device
 - with smoke detector
 - integrated door closer ITS 96
- Bottom door closer DIN EN 1154
- Electric door opener
- Integrated lock inspector (bolt contact)
- Integrated opening indicator (Reed contact)
- Revolving door drives
- Hold-open devices
- Floor seals

Standard sizes:

Ordering dimensions/Modular dimensions width x height	Clear opening dimensions width x height
750 x 2000	666 x 1958
750 x 2125	666 x 2083
875 x 1875	791 x 1833
875 x 2000	791 x 1958
875 x 2125	791 x 2083
1000 x 2000	916 x 1958
1000 x 2125	916 x 2083
1125 x 2000	1041 x 1958
1125 x 2125	1041 x 2083
1250 x 2000	1166 x 1958
1250 x 2125	1166 x 2083
1250 x 2250	1166 x 2208
1250 x 2500	1166 x 2458

Special sizes: From 625 x 1750 mm to 1500 x 3500 mm

Further qualifications (special equipment 62 mm door):



♦ **Smoke-proof in acc. with DIN 18095 for solid and lightweight construction stud walls**



♦ **Sound insulation in acc. with DIN EN 20140 (up to 2500 mm x 2500 mm without glazing) Rw 41 dB with retractable bottom seal Rw 44 dB with buffer strip**

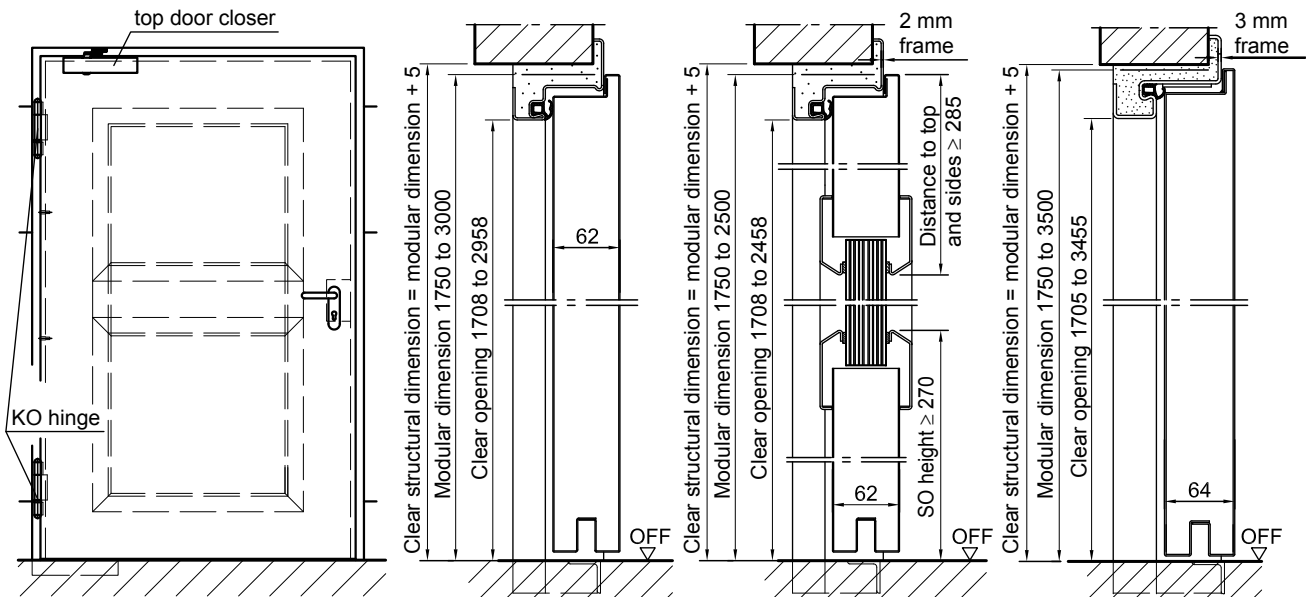


♦ **Burglar resistant in acc. with DIN V ENV 1627 WK 2 – WK 3 (up to a width of 1250 mm x height of 2500 mm)**

Fire-Resistant Steel Door T 90-1-FSA

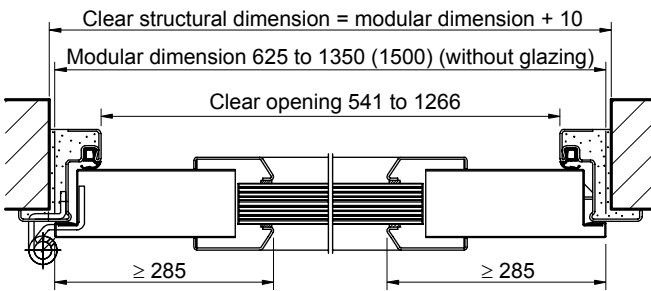
“Teckentrup DF”

optionally with glazing



With through glazing and steel glass-holding strips

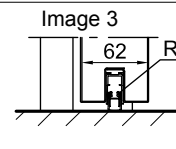
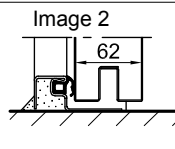
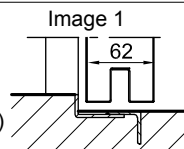
Door leaf 64 mm above modular dimension > 1350 x 3000 mm



DIN left shown DIN right laterally reversed

Floor connections:

- Image 1: With bottom buffer
- Image 2: With bottom buffer/seal
- Image 3: With bottom seal (smoke-proof door with top door closer)



Retractable bottom seal

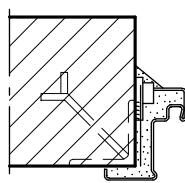
Sound protection 44 dB

Retractable bottom seal, Sliding threshold seal

Installation in masonry/ concrete walls

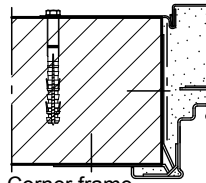
concrete walls ≥ 140 mm
masonry walls ≥ 175 mm
(MD > 1350 x 3000 mm)
masonry walls ≥ 240 mm

Weld-on assembly



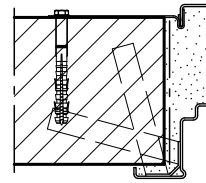
Corner frame

Wall plug assembly



Corner frame with counter frame

Wall anchor assembly

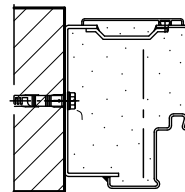


Closed frame

Installation with block frame

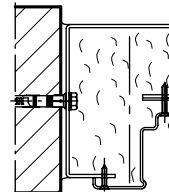
Flush installation between concrete walls ≥ 140 mm
masonry walls ≥ 175 mm

Standard



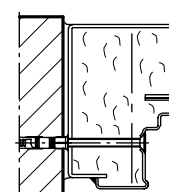
Block frame type 1

Disassembled version



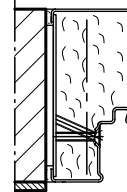
Block frame type 2

Pre-assembled version



Block frame type 3

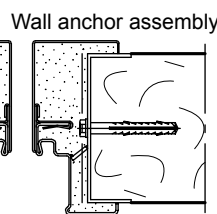
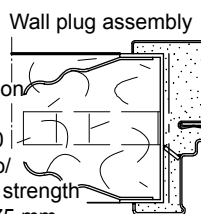
Special block frame



Block frame type 4

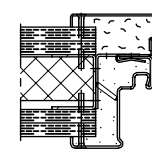
Installation in autoclaved aerated concrete walls

Made of autoclaved aerated concrete blocks or high precision units in accordance with DIN 4165 strength class 4 min. 200 mm or made of reinforced autoclaved aerated concrete slabs strength class 4. Wall thickness min. 175 mm

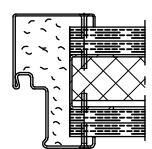


Installation walls (F90)

above 100 mm / Installation fire walls (F90) in accordance with general building authority approval. For permissible walls refer to the Installation details tab



Corner frame with counter frame



Closed frame