

Fire-Resistant Steel Door T 90-2-FSA

“Teckentrup SV”

with safety catch optionally with glazing



Text example

Compile and tender according to requirements.
Please refer to Technical Data below for respective details.
Updated 01.01.2011

Position	No. of pieces	Item	Unit price €	Total price €
		T 90-2-FSA fire-proof door tested in accordance with DIN 4102. Double-leaf door element. Active door leaf DIN right. Galvanized and prime coated door leaf similar to RAL 9002 (grey white), 62 mm thick, rebated on 3-sides. Corner frame, 2 mm thick, with 3-sided seal. Active door leaf with mortice lock, prepared for profile cylinder. Black plastic handle set on both sides. Handle pivoted on bearing, with tumbler insert (Bb) and 1 Bb key. Inactive door leaf with safety catch/safety catch handle on the opposite hinge side. 3 security bolts per leaf, 2 three-piece hinges 1 top door closer in accordance with DIN EN 1154. 1 door selector. “Teckentrup SV” (approval no. Z-6.20-2057) or equivalent.		



Technical data

Building authority approval:

Z- 6.20-2057 tested in acc. with DIN 4102

Installation in:

- Walls made of:
- Masonry min. 175 mm
 - Concrete min. 140 mm
 - Lightweight construction stud wall (F90) up to 2500 x 2500 mm min. 100 mm
For permissible walls refer to the Installation details tab
 - Autoclaved aerated concrete in acc. with DIN 4165 min. 200 mm
or made of reinforced autoclaved aerated concrete boards min. 175 mm

Approved dimensions:

Modular dimensions
Width: 1375 – 3000 mm (up to 2500 mm with glass)
Height: 1750 – 3000 mm (up to 2500 mm with glass)

Handling:

Active door leaf DIN right or DIN left

Door leaf:

Double-skinned **thin rebated** on 3 sides
Door leaf thickness: 62 mm
Sheet thickness: 1 mm
(1.5 mm up to modular dimension 2500 x 2500 mm)
security bolts per leaf: 3 or 4
Reinforcement: U-shaped and flat steel.
Insulation: Mineral fibre and gypsum boards
Fire protection strips in the central rebate

Frame:

Corner frame, 2 mm thick, with 3-sided seal and bottom sill.
With welded-on wall anchor plugs 3-sided fire-protection strips
Special equipment:
Block frame and counter or closed frame
Counter frame/Closed frame for autoclaved aerated concrete

Surface:

Door leaf/Frame galvanized and prime coated, similar to RAL 9002 (grey white).

Hinges and closing devices:

- 4 three-piece hinges with ball bearings
- 2 top door closers DIN 18263
- 1 door selector.

Fittings:

Active door leaf:
• Mortice lock with lever/knob in acc. with DIN 18250 prepared for profile cylinder
• Black plastic handle set. Handle pivoted on bearing, with tumbler insert and 1 Bb key.
Inactive door leaf:
Safety catch with safety catch handle on the opposite hinge side (specify arrangement on hinge side)

Glazing:

Fire-resistant glass "Promaglas 90/37", 37 mm thick with steel glass holding strips galvanized and prime coated grey white similar to RAL 9002.
Max. pane dimensions 760 x 1775 mm.
Round glazing Ø 300, Ø 400 and Ø 500.
Special equipment: Steel glass holding strips with additional aluminium cover strips, stainless steel round glazing holding strips.

Special equipment:

- Handle sets / Lever/Knob sets:
 - Plastic
 - Light metal
 - Stainless steel
 - With short plate or rose escutcheon
- (various makes)
- Prepared for rose escutcheon
- Locks:
 - Profile cylinder 40.5 + 40.5 mm
 - Panic locks (for special locking only via active door leaf)
 - Block lock (must be provided/can also be supplied)
- Panic bar handle only at the active door leaf
- Top door closer DIN EN 1154
 - head assembly
 - with slide rail
 - with locking device
 - with smoke alarm
 - with door selector
 - integrated door closer ITS 96
- Integrated lock inspector(bolt contact)
- Integrated opening indicator (Reed contact)
- Hold-open devices
- Revolving door drives
- Floor seals can now be retrofitted
- Central rebate seal

Standard sizes:

Ordering dimensions/ Modular dimensions width x height	Clear opening dimensions width x height
1500 x 2000	1416 x 1958
1500 x 2125	1416 x 2083
1750 x 2000	1666 x 1958
1750 x 2125	1666 x 2083
2000 x 2000	1916 x 1958
2000 x 2125	1916 x 2083
2000 x 2500	1916 x 2458
2125 x 2125	2041 x 2083
2250 x 2250	2166 x 2208
2500 x 2500	2416 x 2458
3000 x 3000	2916 x 2958

Special sizes: From 1375 x 1750 mm to 3000 x 3000 mm

Further qualifications (special equipment):



- ♦ **Smoke-proof in acc. with DIN 18095 for solid walls**
(up to a width of 3000 mm x height of 3000 mm without glass)
(up to a width of 2500 mm x height of 2500 mm with glass)



- ♦ **Sound insulation in acc. with DIN EN 20140**
Rw 41 dB with bottom buffer
Rw 35 dB with retractable bottom seal
Rw 23 dB without floor seal



- ♦ **Burglar-resistant in acc. with DIN V ENV 1627-WK 2**
(up to a width of 2750 mm x height of 2500 mm without glass)
(up to a width of 2500 mm x height of 2500 mm with glass)

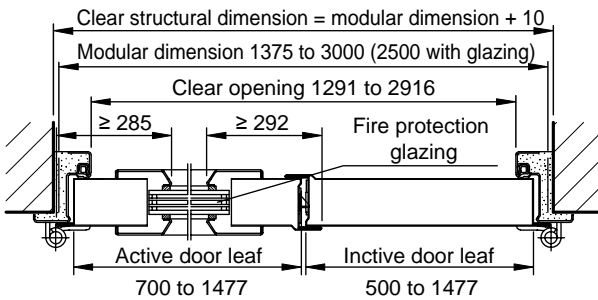
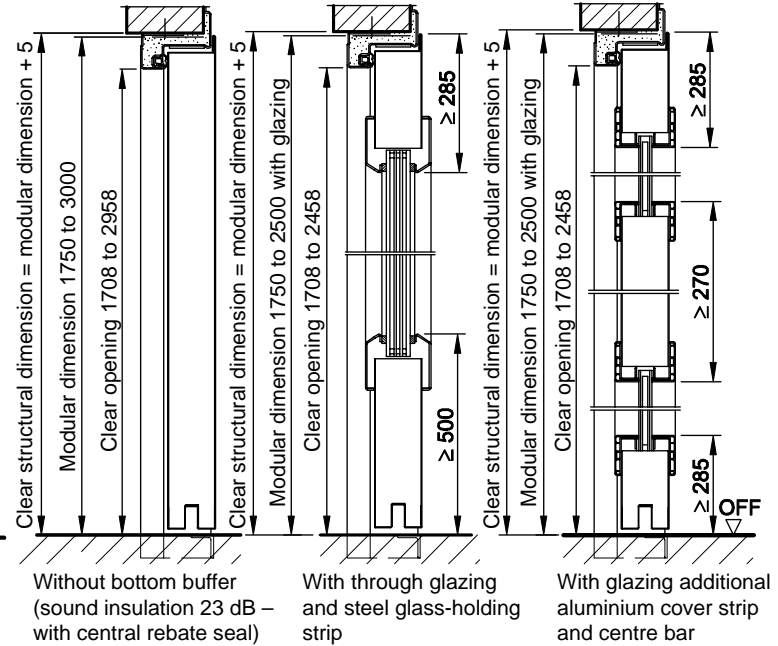
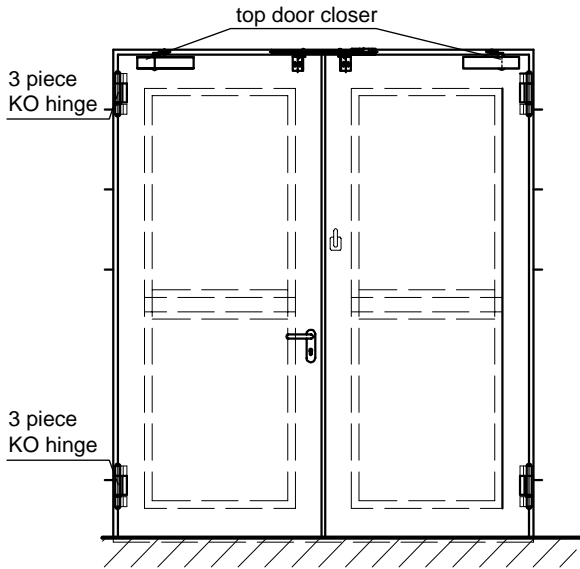


- ♦ **Burglar-resistant in acc. with DIN V ENV 1627-WK 3**
(up to a width of 2750 mm x height of 2500 mm without glass)
(up to a width of 2500 mm x height of 2500 mm with glass)

Fire-Resistant Steel Door T 90-2-FSA

“Teckentrup SV”

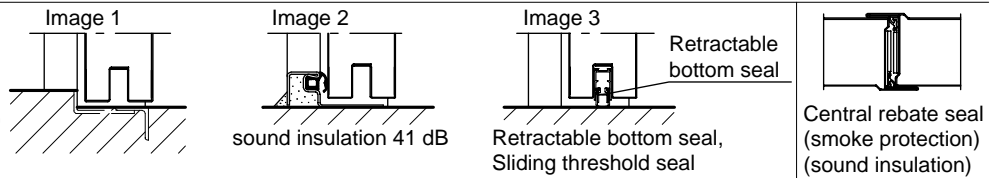
with safety catch optionally with glazing



Active door leaf DIN left shown
Active door leaf DIN right laterally reversed

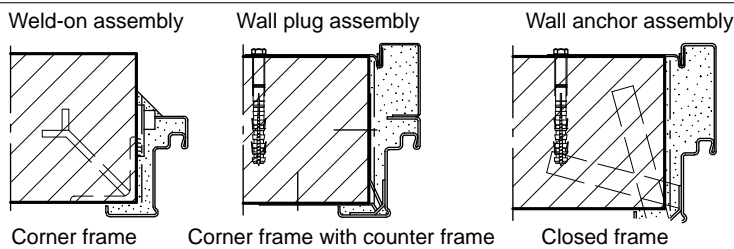
Floor connections:

Image 1: With bottom buffer
Image 2: With bottom buffer/seal
Image 3: With bottom seal (smoke-proof door with top door closer)



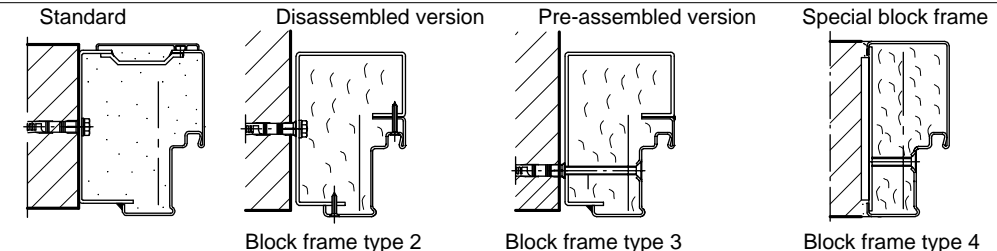
Installation in masonry/ concrete walls

concrete walls ≥ 140 mm
masonry walls ≥ 175 mm



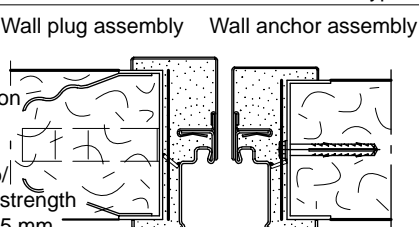
Installation with block frame

Flush installation between concrete walls ≥ 140 mm
masonry walls ≥ 175 mm



Installation in autoclaved aerated concrete walls

Made of autoclaved aerated concrete blocks or high precision units in accordance with DIN 4165 strength class 4 min. 200 mm or made of reinforced autoclaved aerated concrete slabs strength class 4. Wall thickness min. 175 mm



Installation walls (F90) above 100 mm / Installation fire walls (F90)

in accordance with general building authority approval. For permissible walls refer to the Installation details tab

