

# Fire-Resistant Steel Door T 90-2

## “Universal EH”

as a fire barrier for path-bound transport systems



### Text example

Compile and tender according to requirements.  
Please refer to Technical Data below for respective details.  
Updated 01.01.2011

Position	No. of pieces	Item	Unit price €	Total price €
		T 90-2 fire-proof steel door tested in accordance with DIN 4102. Double-leaf door element. Active door leaf DIN right. Door leaf galvanized and prime coated similar to RAL 9002 (grey white). 64 mm thick, thick rebated on 3-sides, with cut-out for rail sleeve in the central rebate area. Corner frame 3,0 mm thick, with 3-sided seal. Active door leaf with mortice lock in accordance with DIN 18250, prepared for profile cylinder. Black plastic handle set. Handle pivoted on bearing, with tumbler insert (Bb) and 1 Bb key. Inactive door leaf with spring latch/spring latch handle on the opposite hinge side. 3 security bolts per leaf. 2 three-piece hinges, 1 top door closer in accordance with DIN EN 1154, 1 door selector. “Teckentrup Universal EH” or equivalent.		



### Technical data

#### Building authority approval:

**T 90-2 door Universal EH “Teckentrup”**

#### Installation in:

- Walls made of:
- Masonry min. 240 mm
  - Concrete min. 140 mm

#### Approved dimensions:

- Modular dimensions:
- Width: 1500 – 2500 mm  
Height: 1750 – 3000 mm

#### Handling:

Active door leaf DIN right or DIN left

#### Door leaf:

Double-skinned Rebat on 3 sides  
Reinforcement: U-shaped and flat steel.  
Insulation: Silicate fire-resistant boards  
Sheet thickness: 1 mm  
Security bolts: 3 or 4  
Fire protection strips in the central rebate

#### Door leaf thickness:

64 mm

#### Frame:

Corner frame 3 mm thick  
with 3-sided seal and bottom sill  
3 or 4 wall anchor plugs on each side  
3-sided fire-protection strips

Special equipment:  
Counter or closed frame

#### Surface:

Galvanized and prime coated door leaf  
similar to RAL 9002 (grey white)  
Galvanized and prime coated frame  
similar to RAL 9002 (grey white)

#### Fittings:

- Active door leaf:  
Mortice lock with lever/knob in accordance with DIN 18250, prepared for profile cylinder  
Black plastic handle set  
Handle pivoted on bearing, with tumbler insert (Bb) and 1 Bb key.
- Inactive door leaf:  
Spring latch with spring latch handle on the opposite hinge side (specify arrangement on hinge side)
- 2 or 3 three-piece hinges with ball bearings per leaf  
1 top door closer DIN EN 1154  
1 door selector

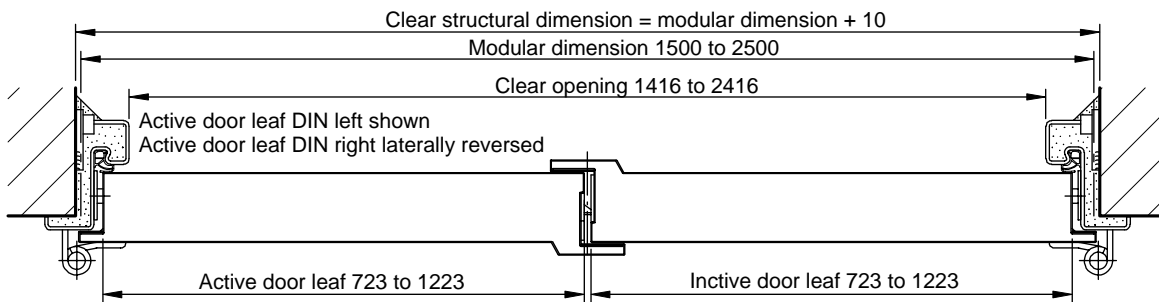
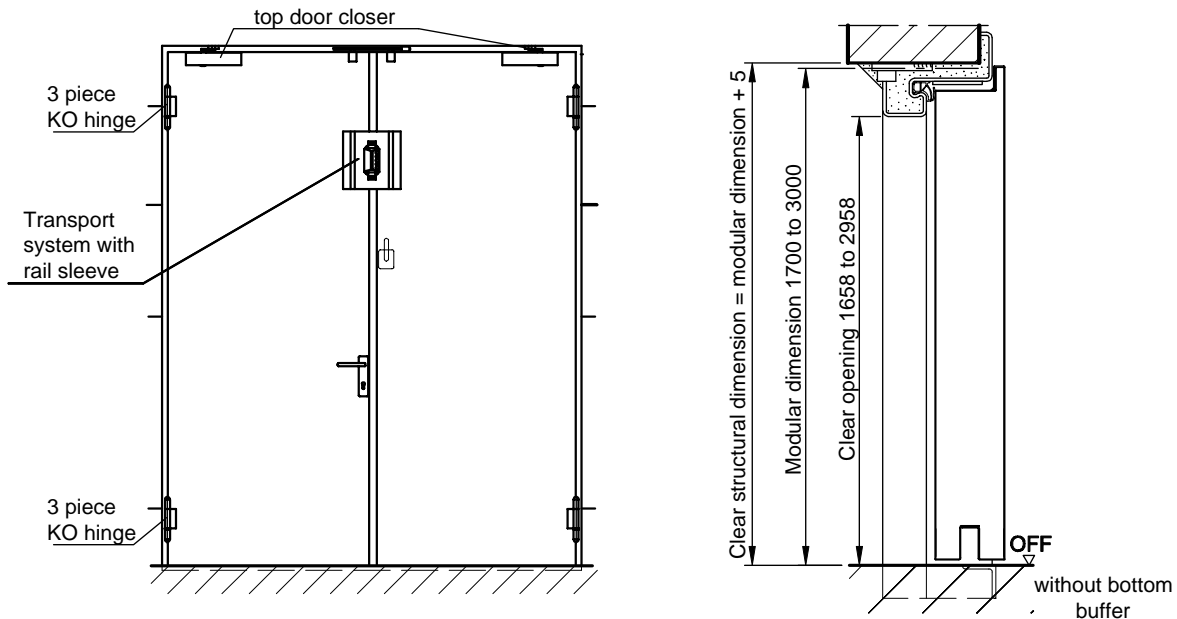
#### Special equipment:

- Handle sets / Lever/Knob sets:
  - Plastic
  - Light metal
  - Stainless steel
  - With short plate or rose escutcheon (various makes)
- Prepared for rose escutcheon
- Locks:
  - Panic lock
  - Profile cylinder 35.5 +40.5 mm
- Top door closer DIN EN 1154 head assembly
  - with slide rail
  - with locking device
  - with smoke detector
  - with door selector
- Electric door opener
- Integrated lock inspector (bolt contact)
- Opening indicator (Reed-contact)
- Revolving door drives
- Hold-open devices
- Rail sleeve (fire barrier)
- Control unit

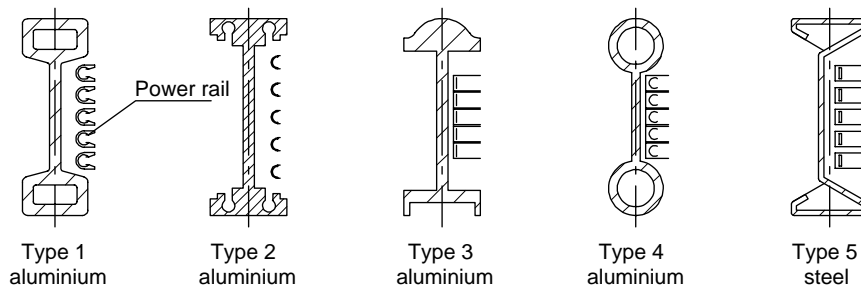
# Fire-Resistant Steel Door T 90-2

## „Universal EH“

as a fire barrier for path-bound transport systems

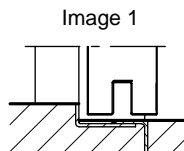


### Rail overview



### Floor connections:

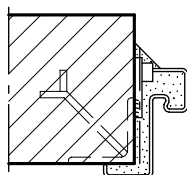
Image 1: With bottom buffer Image



### Installation in masonry/ concrete walls

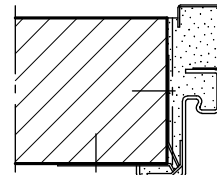
concrete walls  $\geq 140$  mm  
masonry walls  $\geq 240$  mm

#### Weld-on assembly

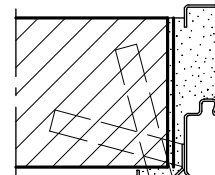


Corner frame

#### Wall plug assembly



#### Wall anchor assembly



Closed frame