

Steel Door MZD-1 “Teckentrup”

optionally with glazing



Text example

Compile and tender according to requirements.
Please refer to Technical Data below for respective details.
Updated 01.01.2011

Position	No. of pieces	Item	Unit price €	Total price €
		MZD-1 steel door. Single-leaf door element. Type of handling DIN right. Door leaf 42 mm thick, rebated on 3 sides. Corner frame, 2 mm thick, with 3-sided seal. Door leaf and frame galvanized and powder coated, similar to RAL 9002 (grey white), mortice lock with lever/knob in accordance with DIN 18250, prepared for profile cylinder. Black plastic handle set. Handle pivoted on bearing, with tumbler insert (Bb) and 1 Bb key. 1 security bolt, 1 spring hinge, 1 KO hinge with ball bearings. “Teckentrup” or equivalent.		



Technical data

Product: MZD-1 door “Teckentrup”
Heat insulation in acc. with EN ISO 12567-1
 $U_D = 1.9 \text{ W/m}^2\text{K}$

Installation in:

- Masonry
- Concrete
- Autoclaved aerated concrete
- Lightweight construction wall

Dimensions: Width: 625 – 1125 mm
Height: 1750 – 2125 mm

Type of handling: DIN right or DIN left

Door leaf: Double-skinned, **thin rebated** on 3 sides
Door leaf thickness: 42 mm
Sheet thickness: 0.9 mm
Security bolt: 1
Reinforcement: Flat steel
Insulation: Mineral wool

Frame: Corner frame, 2 mm thick, with 3-sided seal and bottom sill
3 wall anchor plugs on each side

Special equipment:
Block or corner frame

Surface: Galvanized and powder coated door leaf/frame similar to RAL 9002 (grey white)

Hinges and closing

devices:

- 1 construction hinge with ball bearings
- 1 spring hinge with hinge sleeve without automatic closing

Fittings:

- Mortice lock with lever/knob, prepared for profile cylinder
- Black plastic handle set
Handle pivoted on bearing, with tumbler insert and 1 Bb key

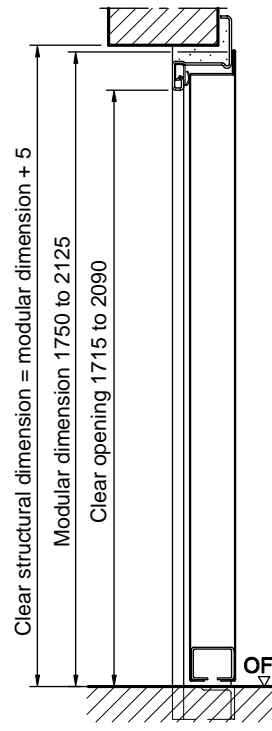
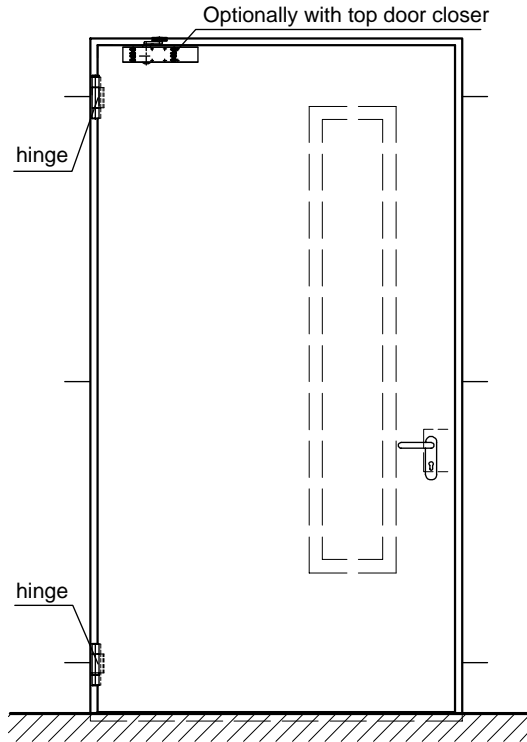
Glazing: Wire patterned glass or ISO wire patterned glass with LM glazing frame.
Standard sizes 230 x 1360 mm (window size)

Special equipment:

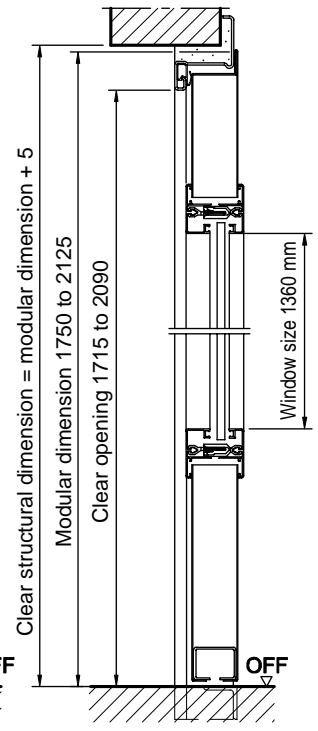
- Handle sets / Lever/Knob sets:
 - Plastic
 - Light metal
 - Stainless steel
 - With short plate or rose escutcheon (various makes)
With fixed outer knob
- Prepared for rose escutcheon
- Locks
 - Profile cylinder 30.5 + 30.5 mm
 - Panic locks
- Top door closer DIN EN 1154
- Spring hinge
- Floor seal
- Aluminium rain guard

Steel Door MZD-1 "Teckentrup"

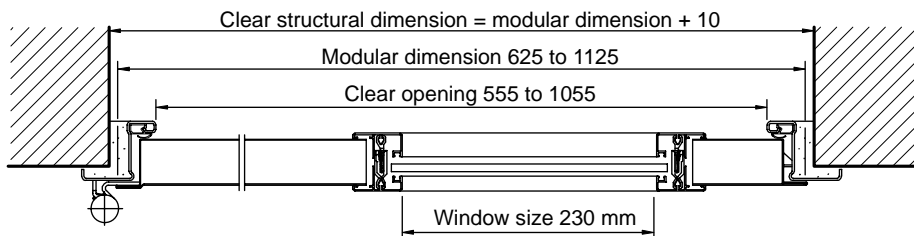
optionally with glazing



Without bottom buffer without glazing



Without bottom buffer with glazing



DIN left shown
DIN right laterally reversed

Floor connections:

- Image 1: With bottom buffer
- Image 2: With bottom buffer/seal
- Image 3: With bottom seal

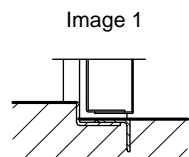


Image 1

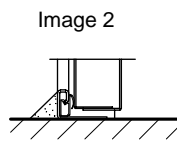


Image 2

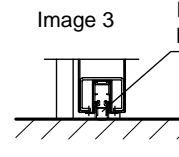


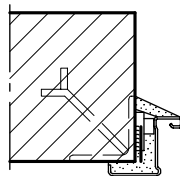
Image 3

Retractable bottom seal

Retractable bottom seal, Sliding threshold seal

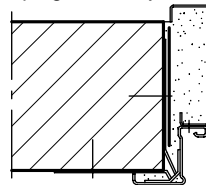
Installation in masonry/concrete walls

Weld-on assembly



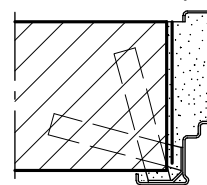
Corner frame

Wall plug assembly



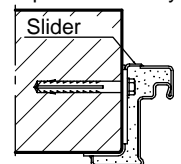
Corner frame with counter frame

Wall anchor assembly

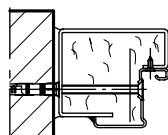


Closed frame

Installation in exposed masonry



Slider



Block frame