

# Steel door MZD-HT 8 "Teckentrup"

left/right-handed, optionally with glazing

Performance specifications according to DIN EN 14351-1 see page 178



## Text example

Compile and tender according to requirements.  
Please refer to Technical Data below for respective details.  
Updated 01.01.2011

Position	No. of pieces	Item	Unit price €	Total price €
		MZD-HT 8 steel door. Single-leaf door element, can be used left/right-handed. Door leaf 42 mm thick, rebated on 4 sides. 4-sided corner frame, with 4-sided seal, 2 mm thick, design ensures that the bottom buffer can be removed. Mortice lock with lever/knob, prepared for profile cylinder. Black plastic handle set. Handle pivoted in bearing, with tumbler insert (Bb) and 1 Bb key, 1 security bolt. 1 spring hinge, 1 KO hinge with ball bearings. "Teckentrup" or equivalent.		



## Technical data

**Product:** MZD-HT 8 door "Teckentrup"  
Can be used left/right handed  
Heat insulation in acc. with EN ISO 12567-1  
 $U_D = 1.9 \text{ W/m}^2\text{K}$

**Installation in:**

- Masonry
- Concrete
- Autoclaved aerated concrete
- Lightweight construction wall

**Dimensions:** Width: 750 – 1125 mm  
Height: 2000 – 2125 mm

**Type of handling:** Left/right handed

**Door leaf:** Double-skinned, **thin rebated** on 4 sides,  
Sheet thickness: 0.9 mm  
Door leaf thickness: 42 mm  
Security bolt: 1  
Reinforcement: Flat steel  
Insulation: Mineral wool

**Frame:** Corner frame, four-sided, 2 mm thick, with 4-sided seal (sound insulation), design ensures that the bottom buffer can be removed.  
4 welded-on wall anchor plugs on each side.

Special equipment:  
Counter frame

**Surface:** Galvanized and powder coated door leaf/frame, similar to RAL 9002 (grey white)

### Hinges and closing devices:

- 1 construction hinge (KO) with ball bearings
- 1 spring hinge with hinge sleeve without automatic closing

### Fittings:

- Mortice lock with lever/knob, prepared for profile cylinder
- Black plastic handle set  
Handle pivoted on bearing, with tumbler insert (Bb) and 1 Bb key

### Glazing:

Wire patterned glass or ISO wire patterned glass with LM glazing frame.  
Standard sizes 230 x 1360 mm (window size)

### Special equipment:

- Handle sets / Lever/Knob sets:
  - Plastic
  - Light metal
  - Stainless steel
  - With short plate or rose escutcheon (various makes)
- Prepared for rose escutcheon (specify type of handling)
- Locks
  - Profile cylinder 30.5 + 30.5 mm
  - Panic locks
- Spring hinge
- Top door closer DIN EN 1154
- Hold-open devices
- Aluminium rain guard

### Standard sizes:

Ordering dimensions/ Modular dimensions width x height	Clear opening dimensions width x height
750 x 2000	680 x 1965
875 x 1875	805 x 1840
875 x 2000	805 x 1965
875 x 2125	805 x 2090
1000 x 1875	930 x 1840
1000 x 2000	930 x 1965
1000 x 2125	930 x 2090
1125 x 2000	1055 x 1965
1125 x 2125	1055 x 2090

**Special sizes:** See steel door MZD-1 "Teckentrup" (with corner frame)

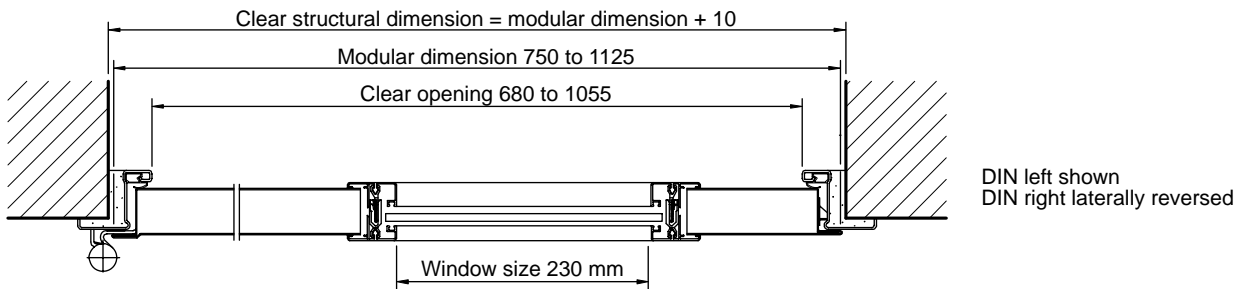
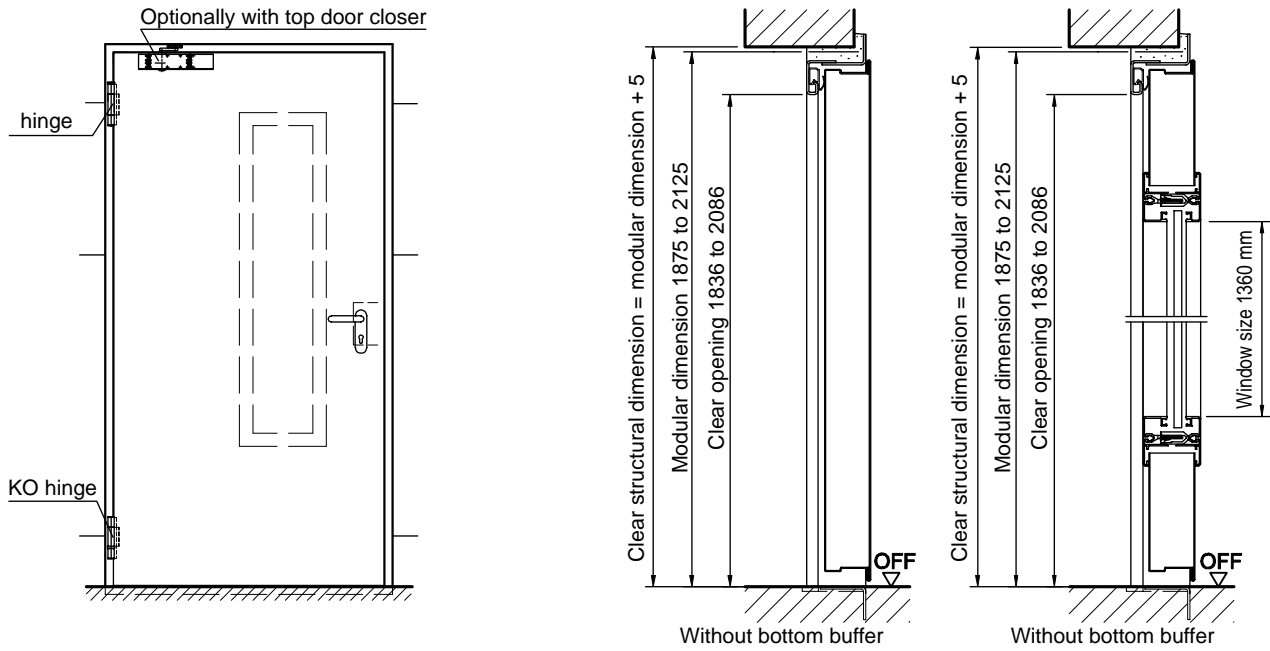
### Further qualifications (special equipment):



- ♦ **Sound insulated in acc. with DIN EN 20140/717 Part 1**  
**RW 39dB with bottom buffer (standard)**  
**RW 37dB with sliding threshold seal**

# Steel door MZD-HT 8 "Teckentrup"

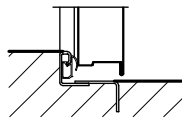
left/right-handed, optionally with glazing



## Floor connections

Image 1: With bottom buffer

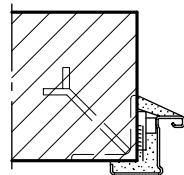
Image 1



(Sound insulation RW 39)

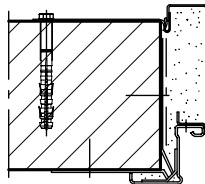
## Installation in masonry/ concrete walls

Weld-on assembly



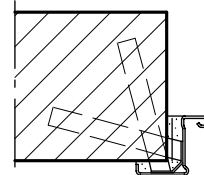
Corner frame

Wall plug assembly



Corner frame with counter frame

Wall anchor assembly



Corner frame