

Steel Door dw 52-2 "Teckentrup DF"

optionally with glazing, optionally with upper casing/top light

Performance specifications according to DIN EN 14351-1 see page 178



Text example

Compile and tender according to requirements.
Please refer to Technical Data below for respective details.
Updated 01.01.2011

Position	No. of pieces	Item	Unit price €	Total price €
		Heat-insulated steel door dw 52-2, double-skinned. Double-leaf door element. Active door leaf DIN right. Door leaf 52 mm thick, thick rebated on 3 sides. Corner frame, 2 mm thick, with 3-sided seal. Door leaf/Frame galvanized and prime coated, similar to RAL 9002 (grey white). Active door leaf with mortice lever/knob lock, prepared for profile cylinder. Black plastic handle set. Handle pivoted on bearing, with tumbler insert (Bb) and 1 Bb key. Inactive door leaf with concealed door edge bolt on the opposite hinge side. 3 security bolts per leaf. 2 two-piece KO hinges with ball bearings. "Teckentrup" or equivalent.		



Technical data

Product: dw 52-2 door "Teckentrup DF"
Heat insulation in acc. with EN ISO 12567-1
 $U_D = 2.0 \text{ W/m}^2\text{K}$

Installation in:

- Masonry
- Concrete
- Autoclaved aerated concrete
- Lightweight construction wall

Dimensions: Width: 1500 – 3000 mm
Height: 1750 – 3000 mm

Type of handling: DIN right or DIN left

Door leaf: Double-skinned, **thick rebated** on 3 sides
Door leaf thickness: 52 mm
Sheet thickness: 1 or 1.5 mm
Security bolts: 3
Reinforcement: Flat steel
Insulation: Mineral wool

Frame: Corner frame, 2 mm thick, with 3-sided seal and bottom sill.
3 wall anchor plugs on each side

Special equipment:
Block, counter or closed frame

Surface: Galvanized and prime coated door leaf/frame, similar to RAL 9002 (grey white)

Hinges and closing devices:

- 2 two-piece KO hinges with ball bearings

Fittings: Active door leaf:

- Mortice lock with lever/knob in accordance with DIN 18250, prepared for profile cylinder
- Black plastic handle set
Handle pivoted on bearing, with tumbler insert (Bb) and 1 Bb key

Inactive door leaf:

- Concealed door edge bolt, locking at the top and bottom

Glazing: Wire or ISO glass with aluminium glazing strips
Standard sizes 545 x 345 mm (window size)
Max. pane size up to 1.5 m²
Round glazing Ø 300, Ø 400 and Ø 500 mm (steel ring, stainless steel ring)

Special equipment:

- Handle sets / Lever/Knob sets:
 - Plastic
 - Light metal
 - Stainless steel
 - With short plate or rose escutcheon (various makes)
 - With fixed outer knob
- Prepared for rose escutcheon
- Locks
 - Profile cylinder 45.5 + 30.5 mm
 - Panic locks
- Top door closer DIN EN 1154
- Concealed slide rails-door closer ITS 96
- Spring hinge
- Floor seal
- Rectangular glazing (special size)
- Round glazing max. Ø 600 mm with rubber clamping profile
- Aluminium ventilation grille
- Steel transformer grille
- Upper casing
- Upper casing with glazing or transformer grille
- Aluminium rain guard

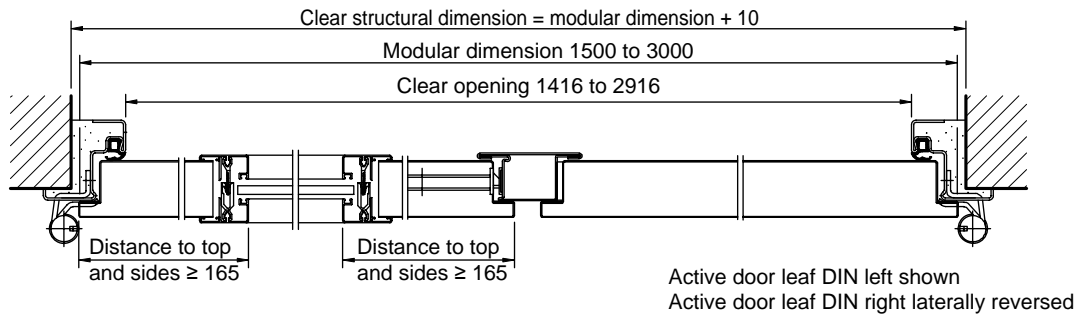
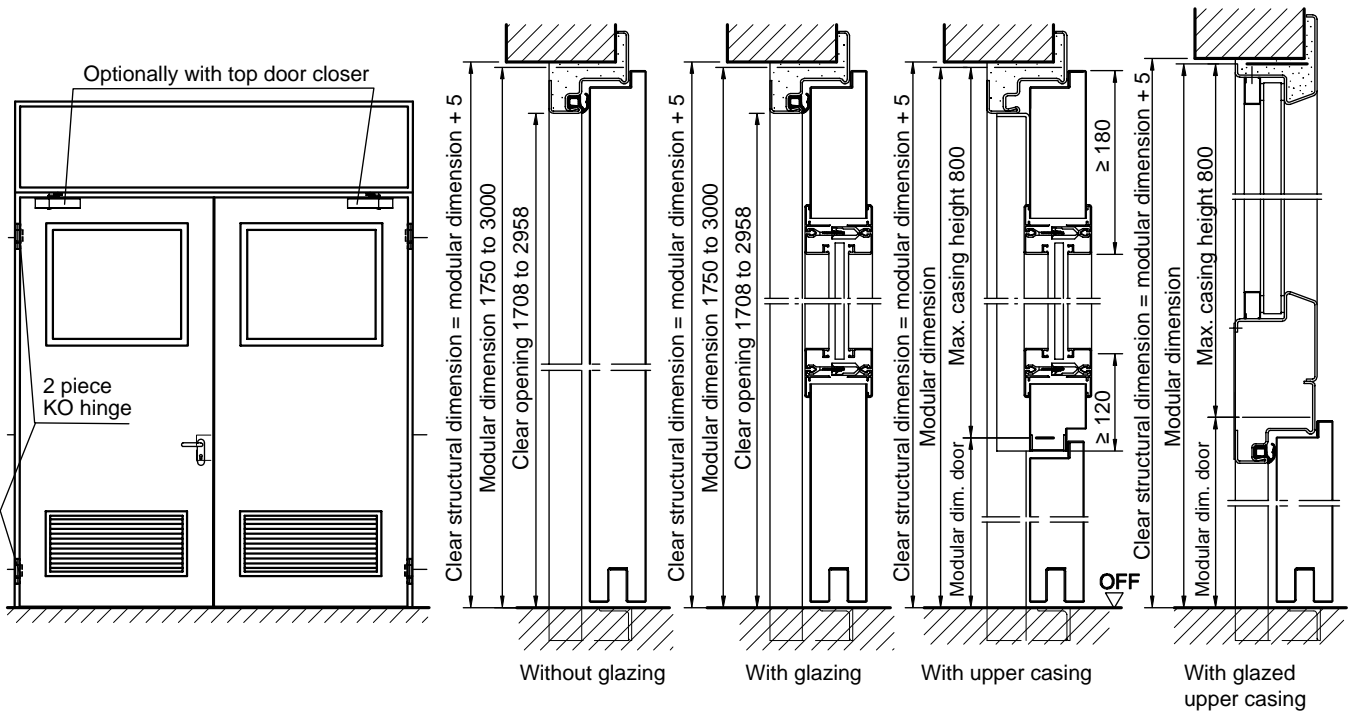
Standard sizes:

Ordering dimensions/ Modular dimensions width x height	Clear opening dimensions width x height
1500 x 2000	1416 x 1958
1500 x 2125	1416 x 2083
1750 x 2000	1666 x 1958
2000 x 2000	1916 x 1958
2000 x 2125	1916 x 2083
2000 x 2500	1916 x 2458
2125 x 2125	2041 x 2083
2250 x 2250	2166 x 2208
2500 x 2500	2416 x 2458

Special sizes: From 1500 x 1750 mm to 3000 x 3000 mm

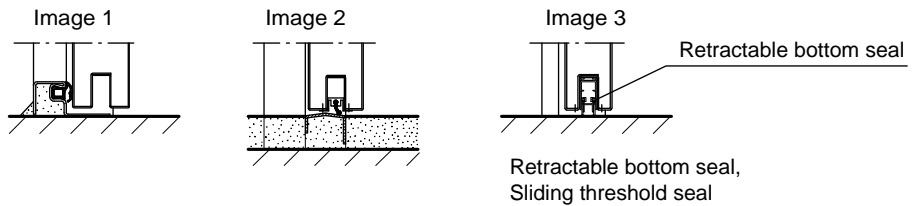
Steel Door dw 52-2 "Teckentrup DF"

optionally with glazing, optionally with upper casing/top light



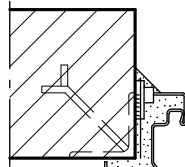
Floor connections:

- Image 1: With bottom buffer/seal
- Image 2: With Teckentrup sliding threshold seal
- Image 3: with retractable bottom seals



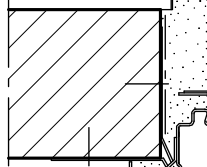
Installation in masonry/ concrete walls

Weld-on assembly



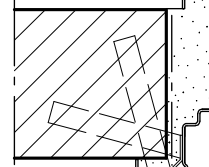
Corner frame

Wall plug assembly



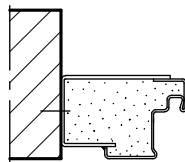
Corner frame with counter frame

Wall anchor assembly



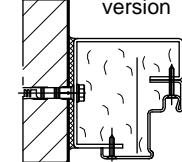
Closed frame

Standard



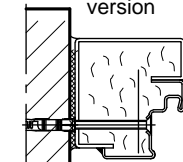
Block frame type 1

Disassembled version



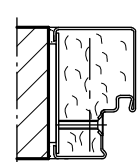
Block frame type 2

Pre-assembled version



Block frame type 3

Special block frame



Block frame type 4