

Steel Door dw 64-2 "Teckentrup"

Steel Door dw 64-2 "Teckentrup XL"

optionally with glazing, optionally with upper casing

Performance specifications according to DIN EN 14351-1 see page 178

Also available in STAINLESS STEEL



Text example

Compile and tender according to requirements.
Please refer to Technical Data below for respective details.
Updated 01.01.2011

Position	No. of pieces	Item	Unit price €	Total price €
		dw 64-2 heat-insulated double-leaf steel door, double-skinned, filled with mineral wool. Active door leaf DIN right. Flush mounted door leaf with less protruding hinges. Door leaf/Frame galvanized and prime coated similar to RAL 9002 (grey white). 64 mm thick, rebated on 3-sides. Corner frame 1.5 mm/ 2 mm thick, with 3-sided seal. Active door leaf with mortice lever/knob lock in accordance with DIN 18250, prepared for profile cylinder. Black plastic handle set. Handle pivoted on bearing, with tumbler insert (Bb) and 1 Bb key. Inactive door leaf with concealed door edge bolt. 1 security bolt per leaf, 4 KO hinges. "Teckentrup" or equivalent.		



Technical data

Product: dw 64-2 door "Teckentrup"
dw 64-2 door "Teckentrup XL"
Heat insulation in acc. with EN ISO 12567-1 (doors without glazing) $U_D = 1.6 \text{ W/m}^2\text{K}$

Installation in:

- Masonry
- Concrete
- Autoclaved aerated concrete
- Lightweight construction wall

Dimensions:

dw 64-2 door "Teckentrup"
Width: 1500-2500 mm
Height: 1750-2500 mm

dw 64-2 door "Teckentrup XL"
Width: 3000 mm
Height: 4000 mm

Type of handling: DIN right or DIN left

Door leaf: Double-skinned, rebated on 3 sides, mineral wool filling
Door leaf thickness: 64 mm
Sheet thickness "Teckentrup": 1 mm
"Teckentrup XL": 1.5 mm
Security bolts per leaf "Teckentrup": 1
Security bolts per leaf "Teckentrup XL": 3

Frame: **dw 64-2 door "Teckentrup"**
Corner frame, 1.5 mm thick, galvanized with 3-sided seal and bottom sill.
Frame fixed with screws, 3 screws per side
dw 64-2 door "Teckentrup XL"
Corner frame 2 mm thick with 3-sided seal and bottom sill.
3 wall anchor plugs on each side.
Special equipment:
Block, counter or closed frame

Surface: Galvanized and prime coated door leaf/frame similar to RAL 9002 (grey white)
Special equipment:
• Stainless steel only "Teckentrup XL"

Hinges and closing devices::

- 4 KO hinges with ball bearings

Fittings: Active door leaf:

- Mortice lock with lever/knob, prepared for profile cylinder
- Black plastic handle set
Handle pivoted on bearing, with tumbler insert (Bb) and 1 Bb key

Inactive door leaf:

- Concealed door edge bolt "Teckentrup"
- Overlying door edge bolt "Teckentrup XL" locking at the top and bottom

Glazing: Wire or ISO glass with aluminium glazing strips
Standard sizes 545 x 345 mm (window size)
Round glazing $\varnothing 300$, $\varnothing 400$ and $\varnothing 500$
Glass thickness 21 mm (steel ring/stainless steel ring)

Special equipment:

- Handle sets / Lever/Knob sets:
 - Plastic
 - Light metal
 - Stainless steel
 - With short plate or rose escutcheon (various makes)
 - With fixed outer knob
- Locks
 - Profile cylinder 40.5 + 40.5 mm
 - Panic locks
- Top door closer DIN EN 1154
- Concealed slide rails-door closer ITS 96
- Floor seals
- Rectangular glazing (special size)
- Aluminium ventilation grille
- Steel transformer grille (only dw 64 XL)
- Upper casing
- Upper casing with glazing or transformer grille
- Aluminium rain guard

Standard sizes: dw 64-2 "Teckentrup"

Ordering dimensions/ Modular dimensions width x height	Clear opening dimensions width x height
1500 x 2000	1416 x 1958
1500 x 2125	1416 x 2083
1750 x 2000	1666 x 1958
2000 x 2000	1916 x 1958
2000 x 2125	1916 x 2083
2000 x 2500	1916 x 2458
2125 x 2125	2041 x 2083
2250 x 2250	2166 x 2208
2500 x 2500	2416 x 2458

Special sizes:
"Teckentrup": From 1500 x 1750 mm to 2500 x 2500 mm
"Teckentrup XL": Up to 3000 x 4000 mm

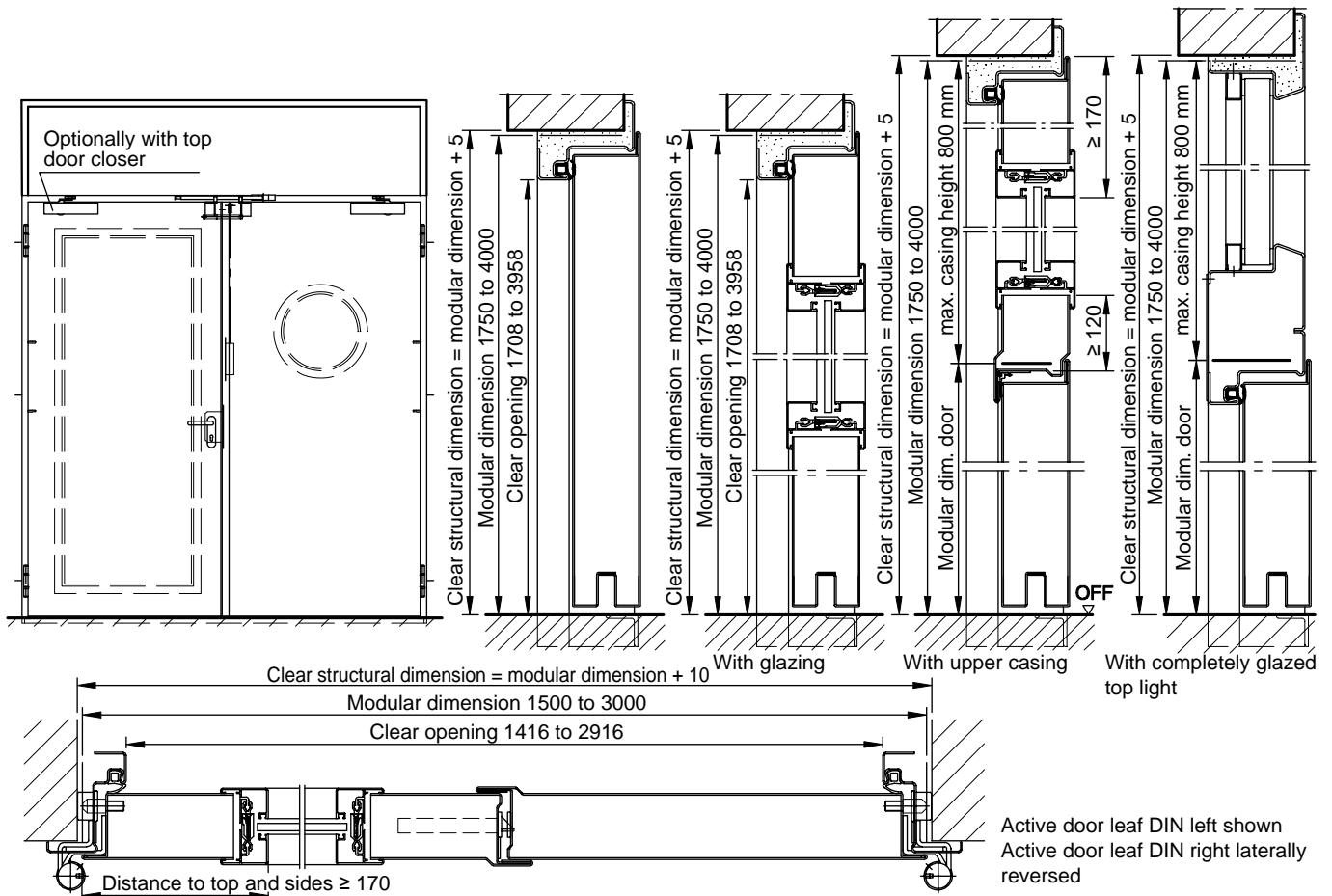
Steel Door dw 64-2 "Teckentrup"

Steel Door dw 64-2 "Teckentrup XL"

to 2500 x 2500 mm

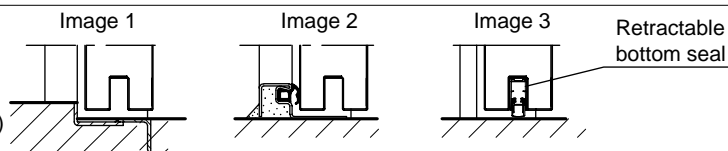
to 3000 x 4000 mm

optionally with glazing, optionally with upper casing



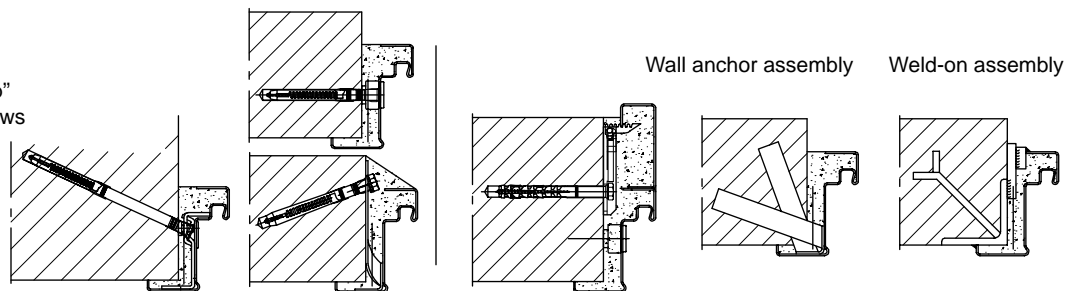
Floor connections:

- Image 1: With bottom buffer
- Image 2: With bottom buffer/seal
- Image 3: With bottom seal (smoke-proof door with top door closer)



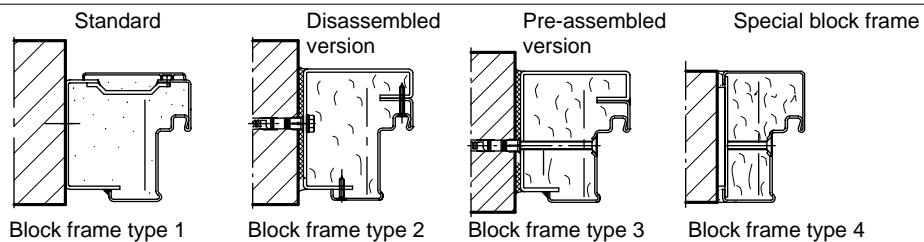
Installation in masonry/ concrete walls

Caution!
Installation dw 64 "Teckentrup" shownframe is fixed with screws (dw 64 "Teckentrup XL" = wall anchor plugs)



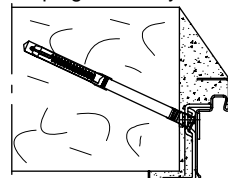
Installation with block frame

Flush installation between concrete walls/ masonry walls

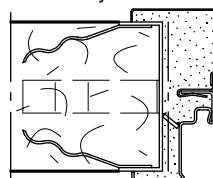


Installation in autoclaved aerated concrete walls

Wall plug assembly



Wall anchor assembly



Installation in installation walls

(light construction stud walls)
Installation dw 64 "Teckentrup" shown

