

Smoke-Proof Aluminium Door RS-2 System "Schüco ADS 65.NI SP"

with glazing, optionally with top light/side part



Text example

Compile and tender according to requirements.
Please refer to Technical Data below for respective details.
Updated 01.11.2011

Position	No. of pieces	Item	Unit price €	Total price €
		Aluminium smoke-proof door "RS-2", made of thermally separated multi-hollow-profiles "Schüco ADS 65.NI SP". Flush-mounted hinge with EPDM rabbit seals on both sides for low-noise operation. Building depth of door and leaf frame 65 mm. Laminated safety glass (VSG), 6 mm. Bolt-latch-lock combination in the active leaf. Rebated upward bolt in the in-active leaf. Aluminium round handle set. door closer, slide channel version door closer according to DIN EN 1154, on the hinge side. 2 security bolt.		



Technical data

Building authority approval:

Smoke-proof aluminium door RS-2
System „Schüco ADS 65.NI SP“ P 120003268-20
tested in acc. with DIN 18095 and EN 1634-3
smoke-proof with DIN 18095

Installation in:

- Masonry ≥ 115 mm
- Concrete walls ≥ 100 mm
- Lightweight construction stud walls (F 90-A) ≥ 100 mm
- Autoclaved aerated concrete block or high precision units in acc. with DIN 4165, strength class G4 or GP4 ≥ 150 mm
- Fire-protection glazing of fire-resistance class F30
- Concealed steel support and/or joist F90-A in acc. with DIN 4102, Part 2 + 4 (only for internal walls)

Approved dimensions:

Overall frame dimensions:
Frame width: 908 - 2938 mm
Frame height: 1707 - 3047 mm
Frame height with top light: unlimited

Type of handling:

DIN right outside/inside
DIN left outside/inside

Design:

- Flush-mounted, thermally separated aluminium profiles.
- Building depth 65 mm,
- facing width (frame) 59 mm
- facing width (frame and leaves) 137 mm,
- plinth width 98 mm,
- overall socket height incl. 8mm bottom air space is 106mm

Side parts and top lights:

Permanently fixed to the door element (supplied separately for oversized doors and due to transportation reasons, final assembly carried out by the customer on-site)

Glass dividing bars:

Special equipment:

- 84, 94, 150mm for horizontal and vertical assembly. Special freckle widths and socket heights on request

Surface:

- Anodized in E6/EV1 or RAL 9016
- Powder coated RAL of your choice

Fittings:

- 4 no. threepart aluminium screw-on hinges
- slide channel door closer with integrated door selector according to DIN EN 1154
- Retractable bottom seal
- 2 security bolt (hinge side)
- Bolt-latch-lock combination in the active leaf
- rebate bolt upwards on the inactive leaf
- Aluminium round handle set
- Fittings standard in silver

Leaf filling:

- Laminated safety glass (VSG), 6 mm

Special equipment:

- glass variations (foils, engravings)
- smoke protecting panels
- Handle sets / Lever/Knob sets, plastic, light metal, stainless steel
- panic push bar (bar or push bar) according to DIN EN 1125
- hinge variations (also enclosed hinges)
- Door closer with smoke detector and hold-open device
- Revolving door drives
- Electric door opener
- Integrated lock inspector (bolt contact)
- Opening indicator (Reed contact)
- escape survey systems
- access control
- Corner frame
- Corner frame with counter frame
- attached closed frame for edge protection
- arch- and inclined elements
- corner connections

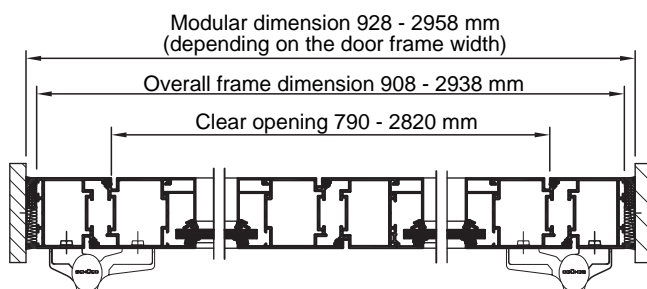
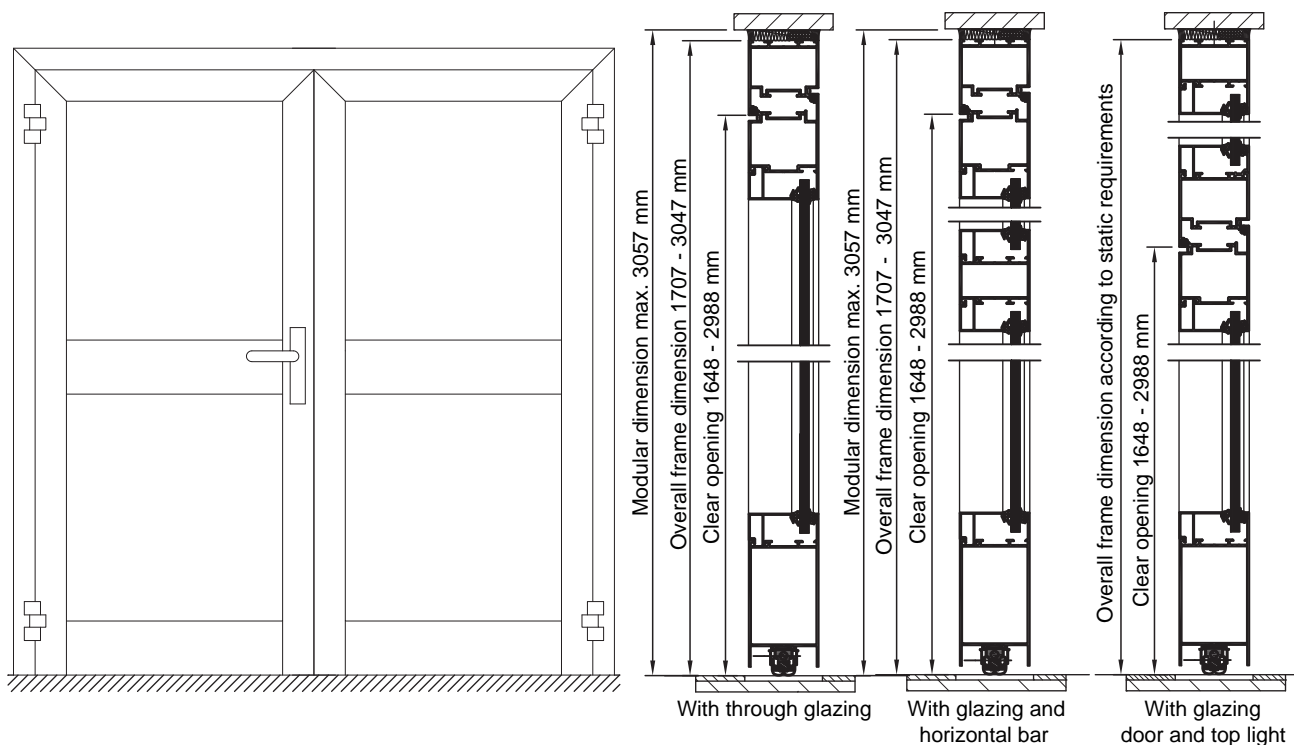
Further qualifications: (special equipment)



- ♦ Sound insulation in acc. with DIN EN 20140

Smoke-Proof Aluminium Door RS-2 System „Schüco ADS 65.NI SP“

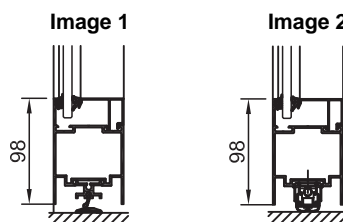
with glazing, optionally with top light/side part



Active door leaf DIN left shown
Active door leaf DIN right laterally reversed

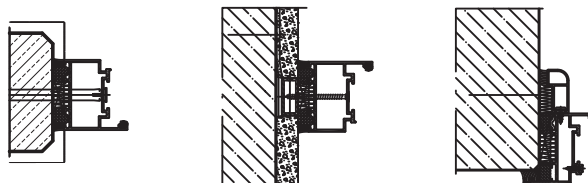
Floor connections:

Image 1: Sliding threshold seal (standard)
Image 2: Retractable bottom seal



Installation in masonry/ concrete walls

Installation: Flush soffit
concrete walls ≥ 100 mm
masonry walls ≥ 115 mm



Profiles

Image 1: Bar profile 84 mm
Image 2: Bar profile 94 mm
Image 3: Bar profile 150 mm

