

Smoke-Proof Steel Door "RS-1"

In accordance with DIN 18095
optionally with glazing, optionally with upper casing



Text example

Compile and tender according to requirements.
Please refer to Technical Data below for respective details.
Updated 01.01.2011

Position	No. of pieces	Item	Unit price €	Total price €
		Smoke-proof steel door RS-1, tested in accordance with DIN 18095. Single-leaf door element. Type of handling DIN right. Galvanized and prime coated door leaf similar to RAL 9002 (grey white), 52 mm thick, rebated on 3 sides, galvanized and prime coated corner frame similar to RAL 9002 (grey white), 2 mm thick, with 3-sided seal and lower bottom threshold for sliding threshold seal in the door leaf. Mortice lock with lever/knob, prepared for profile cylinder (with tumbler insert (Bb) and 1 Bb key). Black plastic handle set. Handle pivoted on bearing, can be used for profile cylinder and Bb key. Smoke-proof door must be equipped with a profile cylinder. 2 security bolts. 2 two-piece hinges Top door closer in accordance with DIN EN 1154 "Teckentrup" or equivalent.		



Technical data

Building authority approval:

Tested in acc. with DIN 18095

Installation in:

- Walls made of:
- Masonry min. 115 mm
 - Concrete min. 100 mm
 - Autoclaved aerated concrete block or high precision units in acc. with DIN 4165 Strength class 4. Wall thickness 175 mm or made of reinforced autoclaved aerated concrete slabs strength class 4. Wall thickness min. 150 mm
 - Lightweight construction stud walls (F 30) min. 100 mm

Approved dimensions:

Width: 625 – 1350 mm
Height: 1750 – 2500 mm

With upper casing:

Up to 1350 – 3500 mm

Type of handling:

DIN right or DIN left

Door leaf:

Double-skinned, thin rebated on 3 sides (upper casing rebated on 4 sides)
Door leaf thickness: 52 mm
Sheet thickness: 1 mm
Security bolts: 3
Reinforcement: U-shaped and flat steel
Insulation: Mineral fibre and fibre silicate boards

Special equipment:

Upper casing
Sheet thickness: 1.5 mm

Frame:

Corner frame, 2 mm thick with 3-sided seal and lower bottom threshold for sliding threshold seal in the door leaf. 3 wall anchor plugs on each side
Special equipment:
Block frame and counter or closed frame (always counter frame for autoclaved aerated concrete walls)

Surface:

Galvanized and prime coated door leaf/frame similar to RAL 9002 (grey white)

Hinges and closing devices:

- 2 two-piece hinges with ball bearings
- 1 top door closer DIN EN 1154

Fittings:

- Mortice lock with lever/knob, prepared for profile cylinder with tumbler insert (Bb) and 1 Bb key
- Black plastic handle set. Handle pivoted on bearing, can be used for profile cylinder and Bb key.
(Smoke-proof doors must be equipped with a profile cylinder)

Glazing:

Rectangular glazing, wire glass 7 – 8 mm thick, or round glazing with steel glass-holding strips.
Max. pane dimensions 900 x 1800 mm.

Special equipment:

Laminated safety glass 6 or 8 mm
Wire plate glass 6 - 7 mm
Steel cord laminated safety glass 6 mm
Single-pane safety glass 6 or 8 mm
Pyran glass 6.5 mm

Special equipment:

- Handle sets / Lever/Knob sets:
 - Plastic
 - Light metal
 - Stainless steel
 - With short plate or rose escutcheon
- (various makes)
- Prepared for rose escutcheon
- Locks:
 - Profile cylinder 35.5 + 35.5 mm
 - Panic locks
 - Block lock (must be provided/also available)
- Panic bar handle
- Top door closer DIN EN 1154
 - head assembly
 - with slide rail
 - with locking device
 - with smoke detector
 - integrated door closer ITS 96
- Electric door opener
- Integrated lock inspector (bolt contact)
- Integrated opening indicator (Reed contact)
- Revolving door drives
- Hold-open devices
- Retractable bottom seal

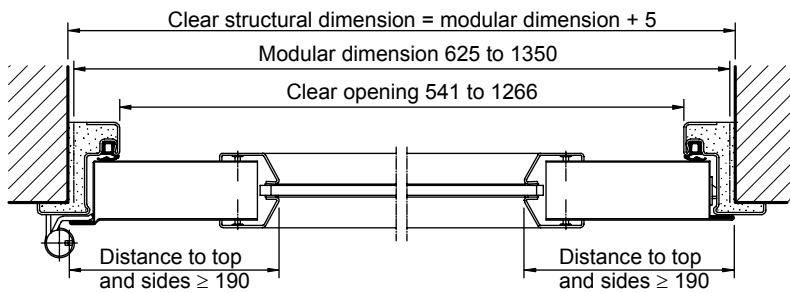
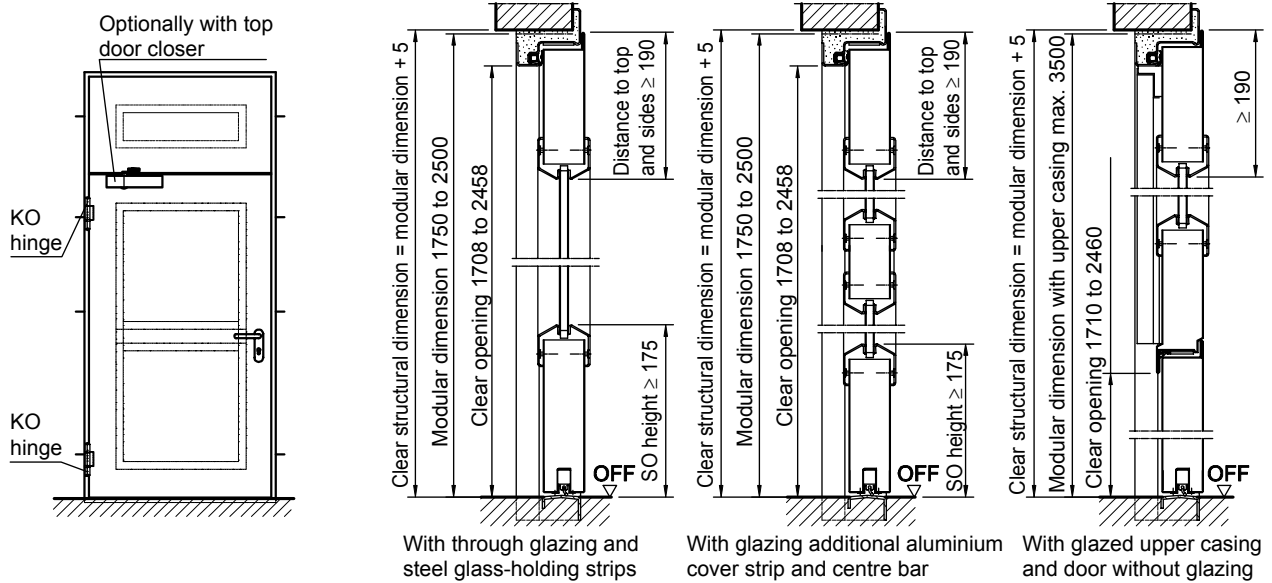
Standard sizes:

Ordering dimensions/ Modular dimensions width x height	Clear opening dimensions width x height
750 x 2000	666 x 1958
875 x 1875	791 x 1833
875 x 2000	791 x 1958
875 x 2125	791 x 2083
1000 x 2000	916 x 1958
1000 x 2125	916 x 2083
1125 x 2000	1041 x 1958
1125 x 2125	1041 x 2083
1250 x 2000	1166 x 1958
1250 x 2125	1166 x 2083
1250 x 2250	1166 x 2208

Special sizes: From 625 x 1750 mm to 1350 x 2500 mm

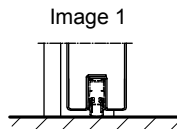
Smoke-Proof Steel Door "RS-1"

In accordance with DIN 18095
optionally with glazing, optionally with upper casing

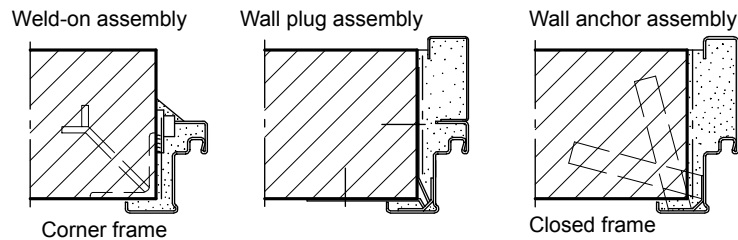


DIN left shown DIN right laterally reversed

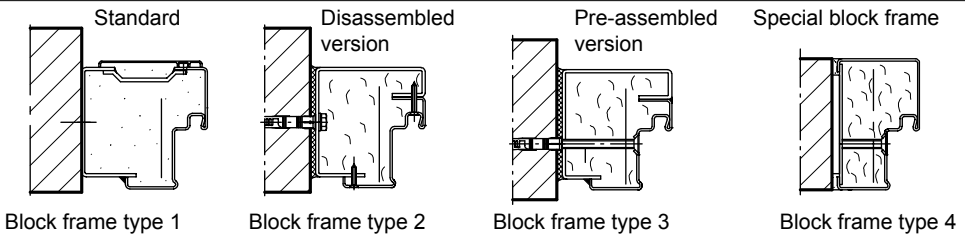
Floor connections:
Image 1: With bottom seal



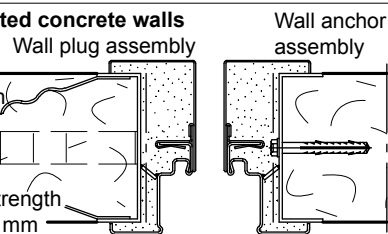
Installation in masonry/ concrete walls
concrete walls ≥ 100 mm
masonry walls ≥ 115 mm



Installation with block frame
Flush installation between
concrete walls ≥ 100 mm
masonry walls ≥ 115 mm



Installation in autoclaved aerated concrete walls
(doors with top door closer).
Made of autoclaved aerated concrete blocks or high precision units in accordance with DIN 4165 strength class 4 min. 150 mm or made of reinforced autoclaved aerated concrete slabs strength class 4. Wall thickness min. 150 mm



Installation in installation walls
(lightweight construction stud walls) (doors with top door closer)
Installation walls F90 in accordance with DIN 4102 Part 4 or in accordance with general building authority test certificate wall thickness min. 100 mm. For permissible walls refer to the Installation details tab

