

Smoke-Proof Steel Door "RS-2 DF"

In accordance with DIN 18095
optionally with glazing, optionally with upper casing



Text example

Compile and tender according to requirements.
Please refer to Technical Data below for respective details.
Updated 01.01.2011

Position	No. of pieces	Item	Unit price €	Total price €
		Smoke-proof steel door "RS-2 DF", tested in accordance with DIN 18095. Double-leaf door element. Type of handling DIN right. Door leaf galvanized and prime coated similar to RAL 9002 (grey white). 52 mm thick, thick rebated on 3-sides. Corner frame 2 mm thick with 3-sided seal and lower bottom threshold for sliding threshold seal in the door leaf. Mortice lock with lever/knob, prepared for profile cylinder (with tumbler insert (Bb) and 1 Bb key). Black plastic handle set. Handle pivoted on bearing, can be used for profile cylinder and Bb key. Smoke-proof door must be equipped with a profile cylinder. 1 security bolt per leaf. Inactive door leaf with central rebate profile and rebate lever bolt. 2 two-piece KO hinges per leaf. Top door closer in accordance with DIN EN 1154. "Teckentrup" or equivalent.		



Technical data

Building authority approval:

Tested in acc. with DIN 18095

Installation in:

- Walls made of:
- Masonry min. 115 mm
 - Concrete min. 100 mm
 - Autoclaved aerated concrete block or high precision units in acc. with DIN 4165 Strength class 4. Wall thickness 175 mm or made of reinforced autoclaved aerated concrete slabs strength class 4. Wall thickness min. 150 mm
 - Lightweight construction stud walls (F 30) min. 100 mm

Approved dimensions:

Width: 1375 – 2500 mm
Height: 1750 – 2500 mm

With upper casing:

Up to height of 3000 mm

Handling:

Active door leaf DIN right or DIN left

Door leaf:

Double-skinned, thick rebated on 3 sides
Upper casing rebated on 3 sides or made of frame profiles
Door leaf thickness: 52 mm
Upper casing: 52 mm
Sheet thickness: 1 mm
1 security bolt per leaf
Reinforcement: U-shaped and flat steel
Insulation: Mineral fibre boards
Special equipment:
Upper casing
Sheet thickness 1.5 mm

Frame:

Corner frame 2 mm thick with 3-sided seal and lower contact threshold for sliding threshold seal in the door leaf. With welded-on wall anchor plugs
Special equipment:
Block, counter or closed frame
Counter frame always for autoclaved aerated concrete walls

Surface:

Galvanized and prime coated door leaf/frame similar to RAL 9002 (grey white)

Hinges and closing devices:

- 4 two-piece KO hinges with ball bearings
- 2 top door closers DIN EN 1154
- 1 door selector

Fittings:

Active door leaf:

- Mortice lock with lever/knob, prepared for profile cylinder with tumbler insert (Bb) and 1 Bb key
- Black plastic handle set. Handle pivoted on bearing, can be used for profile cylinder and Bb key. (Smoke-proof doors must be equipped with a **profile cylinder**)

Inactive door leaf:

- With central rebate profile (seal) and rebate lever bolt

Glazing:

Wire glass 7 – 8 mm thick with galvanized and prime coated steel glazing strips.
Max. pane dimensions 900 x 2100 mm
Round glazing Ø300; Ø400; Ø500
Special equipment: Steel glass-holding strips with additional aluminium cover strips, round glazing
Stainless steel glass-holding strips
Laminated safety glass 6 or 8 mm
Wire plate glass 6 -7 mm
Steel cord laminated safety glass 6 mm
Single-pane safety glass 6 or 8 mm
Pyran glass 6.5 mm

Special equipment:

- Handle sets / Lever/Knob sets:
 - Plastic
 - Light metal
 - Stainless steel
 - With short plate or rose escutcheon
- (various makes)
- Prepared for rose escutcheon
- Locks:
 - Profile cylinder 40.5 + 30.5 mm
 - Panic locks
 - Block lock (must be provided/also available)
- Panic bar handle
- Top door closer DIN EN 1154
 - head assembly
 - with slide rail
 - with locking device
 - with smoke detector
 - integrated door closer ITS 96
- Electric door opener
- Integrated lock inspector (bolt contact)
- Integrated opening indicator (Reed contact)
- Revolving door drives
- Hold-open devices
- Retractable bottom seal

Standard sizes:

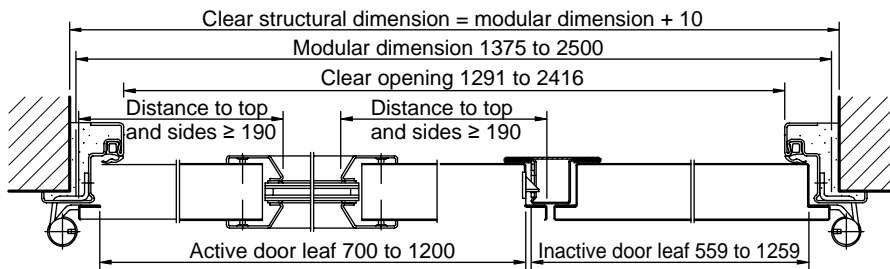
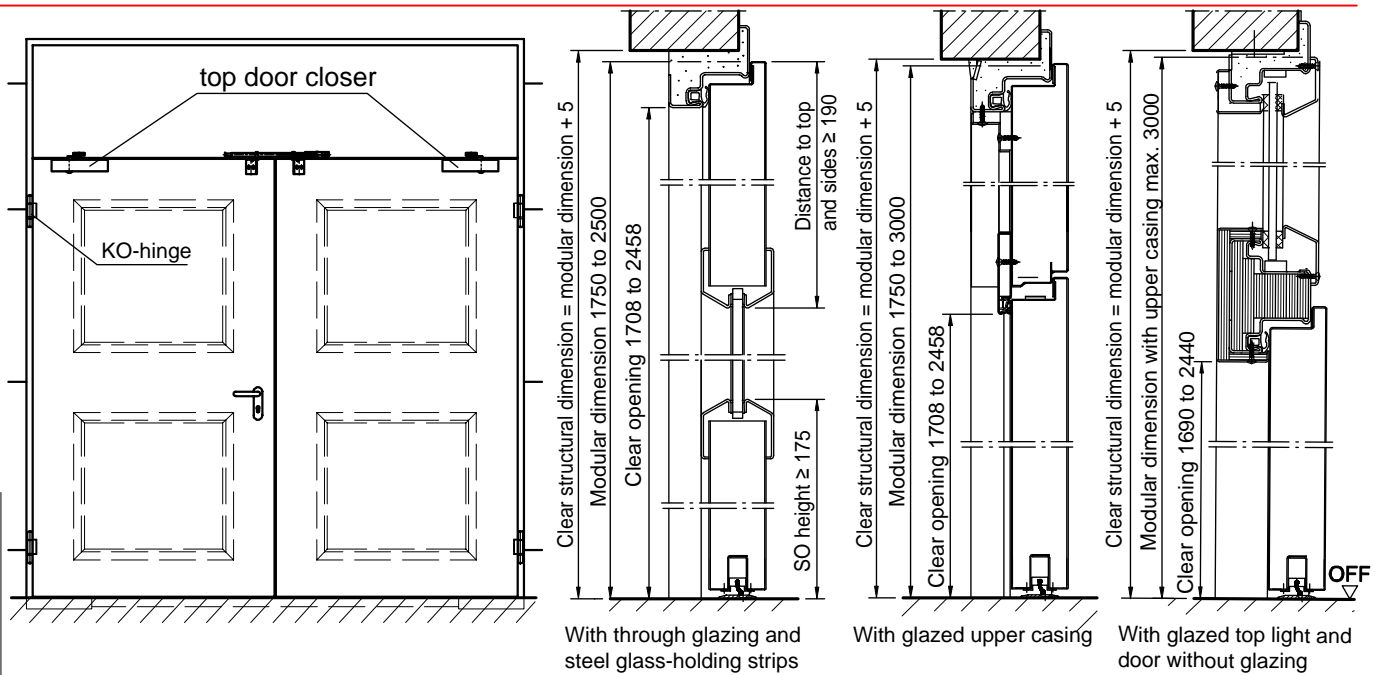
Ordering dimensions/ Modular dimensions width x height	Clear opening dimensions width x height
1500 x 2000	1416 x 1958
1500 x 2125	1416 x 2083
1750 x 2000	1666 x 1958
1750 x 2125	1666 x 2083
2000 x 2000	1916 x 1958
2000 x 2125	1916 x 2083
2000 x 2500	1916 x 2458
2125 x 2125	2041 x 2083
2250 x 2250	2166 x 2208
2500 x 2500	2416 x 2458

Special sizes: From 1375 x 1750 mm to 2500 x 2500 mm

Smoke-Proof Steel Door "RS-2 DF"

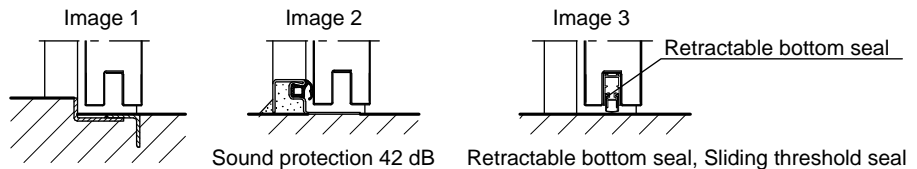
In accordance with DIN 18095

optionally with glazing, optionally with upper casing



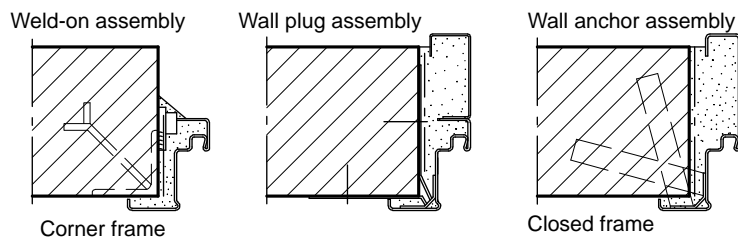
Floor connections:

Image 1: With bottom buffer
 Image 2: With bottom buffer/seal
 Image 3: With bottom seal
 (smoke-proof door with top door closer)



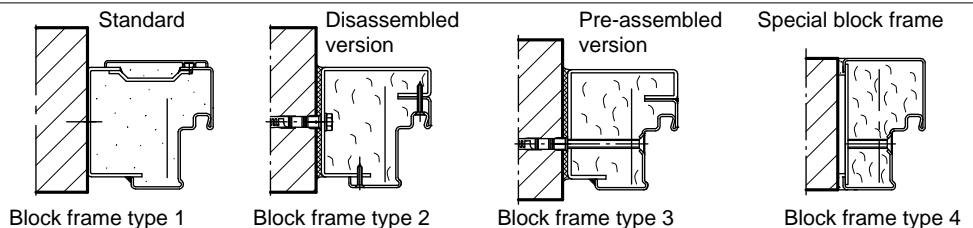
Installation in masonry/ concrete walls

concrete walls ≥ 100 mm
 masonry walls ≥ 115 mm



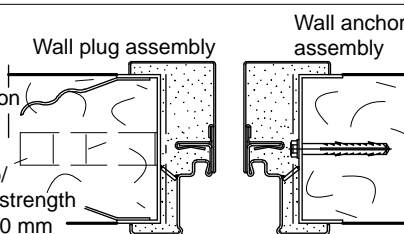
Installation with block frame

Flush installation between concrete walls ≥ 100 mm
 masonry walls ≥ 115 mm



Installation in autoclaved aerated concrete walls

Made of autoclaved aerated concrete blocks or high precision units in accordance with DIN 4165 strength class 4 min. 175 mm or made of reinforced autoclaved aerated concrete slabs strength class 4. Wall thickness min. 150 mm



Installation in installation walls

(lightweight construction stud walls)
 Installation walls F90 in accordance with DIN 4102 Part 4 or in accordance with general building authority test certificate wall thickness min. 100 mm. For permissible walls refer to the Installation details tab.

