

# Fire-Resistant Tubular Profile Steel Door T 30-2-FSA System "Forster Fuego light"

standard **smoke-proof**, with glazing, optionally with top light/side part



## Text example

Compile and tender according to requirements.  
Please refer to Technical Data below for respective details.  
Updated 01.11.2011

Position	No. of pieces	Item	Unit price €	Total price €
		Fire-resistant and smoke-proof double-leaf steel door made of galvanized and yellow chromated precision profile steel tubes "Fuego" T 30-2 in shell design, building depth 65 mm, with fire-resistant glass Pyrostop 30-10, 15 mm thick, EPDM glass and rabbet seals, double 3-sided rabbet seal, single-latch bolt lock with top locking, aluminium round handle set. Slide channel door closer with integrated door selector according to DIN EN 1154, on the hinge side, bottom door edge with 10 mm gap and transport rail that can be removed on-site.		



## Technical data

### Building authority approval:

**T 30-2-FSA door "Forster Fuego light"**  
Z-6.20-1873 tested in acc. with DIN 4102 (EN 1634-1)

- Installation in:**
- Masonry, thickness  $\geq 115$  mm
  - Concrete walls, thickness  $\geq 100$  mm
  - Lightweight construction stud wall (F 90)  $\geq 100$  mm
  - Autoclaved aerated concrete  $\geq 150$  mm (only for internal walls)
  - Fire-protection glazing of fire-resistance class F30 (approval no.: Z-19.14-1382)

### Approved dimensions:

Overall frame dimensions:  
Frame width: 1400 – 2970 mm  
Frame height: 1725 – 3070 mm

### Type of handling:

DIN right outside/inside  
DIN links outside/inside

### Design:

Flush-mounted galvanized and yellow chromated precision profile steel tubes "Fuego" T30 in shell design.  
Building depth: 65 mm  
Facing width: 130 mm (door frame and leaf)  
Plinth height: 90 mm  
bottom door edge with 10 mm gap as standard.  
Side part, top light:  
Door frame width: 70 mm  
Special equipment:  
Glazing strip on both sides

### Side parts and top lights to

Permanently fixed to the door element (supplied separately for oversized doors and due transportation reasons final assembly carried out by the customer on-site)

### Glass dividing bars:

Special equipment:  
Bar profiles 90 mm for horizontal or vertical division of the glass surfaces

### Surface:

- galvanized steel and primed similar to RAL 9002 or finished in RAL 9010, 9016 (powder coating),
- finished in RAL on choice or DB 701,702,703 an additional charge (powder coating)

### Fittings:

- 4 two-piece hinges on ball bearings to 2500 mm. High > 2500 mm 6 two-piece hinges
- per leaf 1 security bolt (centrally located on the hinge side), above 2810 mm 2 security bolts
- With retractable bottom seal
- slide channel door closer with integrated door selector according to DIN EN 1154 sliver on hinge side
- 1 door selector on the hinge side
- Fittings for RAL doors as standard in natural aluminium colour

### Active door leaf:

- Latch-bolt lock with top locking
- Aluminium round handle set

### Leaf filling:

- Fire-resistant glass Pyrostop 30-10 15 mm thick, profile caulk on one side, on the opposite side hidden assembled square steel glazing beads, delivery standard is unglazed

### Special equipment:

- Handle sets / Lever/Knob sets:
  - Plastic
  - Light metal
  - Stainless steel (various makes)
- Locks:
  - Panic locks
  - Block lock
- Panic bar handle (Pushbar)
- Door closer with smoke detector and hold-open device
- Electric door opener without manual unlocking
- Integrated lock inspector (bolt contact)
- Opening indicator (Reed contact)
- Revolving door drives
- Hold-open devices
- Floor seals

### Extension profiles:

- Static profiles
- Fixed parts with sloping edges or recesses
- Top lights with basket, round or segmental arch
- Powder-coated surface in acc. with RAL

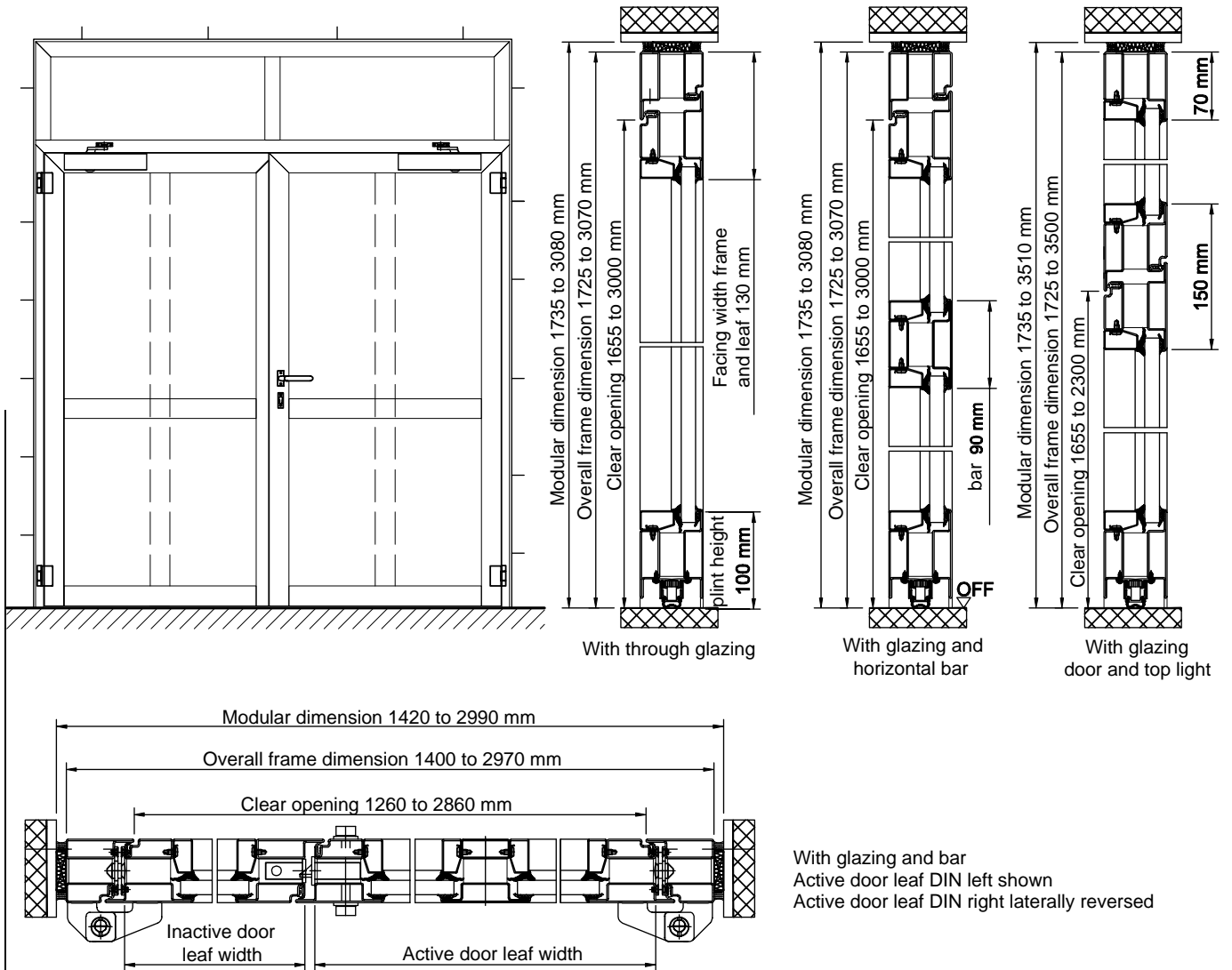
### Further qualifications: (Standard)



- ♦ **Smoke-proof in acc. with DIN 18095 for solid and lightweight construction stud walls**

# Fire-Resistant Tubular Profile Steel Door T 30-2-FSA System „Forster Fuego light“

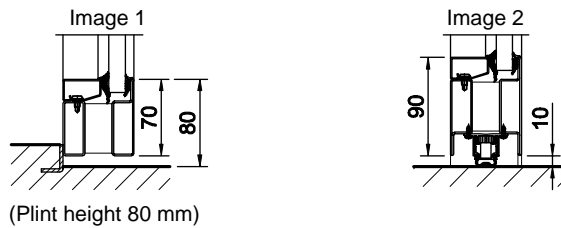
standard **smoke-proof**, with glazing, optionally with top light/side part



(For detail drawings also refer to the Installation details tab)

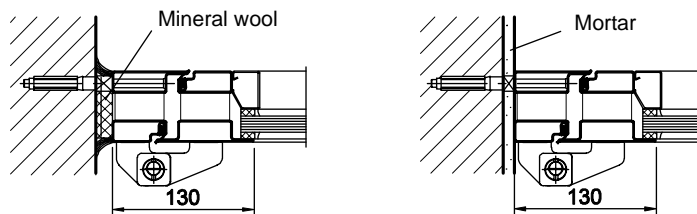
### Floor connections:

Image 1: With bottom buffer  
Image 2: With retractable bottom seal



### Installation in masonry/ concrete walls

Installation: Flush soffit  
concrete walls  $\geq 100$  mm  
masonry walls  $\geq 115$  mm



### Profiles:

Image 1: Bar profile  
Image 2: Plinth profile for leaf or side part

