

# Fire-Resistant Tubular Profile Steel Door T 30-1-FSA System "Forster Fuego light"

standard **smoke-proof**, with glazing, optionally with top light/side part



## Text example

Compile and tender according to requirements.  
Please refer to Technical Data below for respective details.  
Updated 01.11.2011

Position	No. of pieces	Item	Unit price €	Total price €
		Fire-resistant and smoke-proof single-leaf steel door made of galvanized and yellow chromated precision profile steel tubes "Fuego" T 30-1 in shell design, building depth 65 mm, with fire-resistant glass Pyrostop 30-10, 15 mm, thick glass and EPDM rabbet seals, double 3-sided rabbet seal, single-latch bolt lock without top locking. Aluminium round handle set. Slide channel door closer according to DIN EN 1154 on the hinge side, bottom door edge with 10 mm gap and transport rail that can be removed on-site.		



## Technical data

### Building authority approval:

**T 30-1-FSA door "Forster Fuego light"**  
Z- 6.20-1873 tested in acc. with DIN 4102 (EN 1634-1)

### Installation in:

- Masonry thickness min. 115 mm
- Concrete walls, thickness min. 100 mm
- Lightweight construction wall (F 90)
- Autoclaved aerated concrete min. 150 mm (only for internal walls)
- Fire-protection glazing of fire-resistance class F30 (approval no.: Z-19.14-1382)

### Approved dimensions:

Overall frame dimensions:  
Frame width: 700 – 1540 mm  
Frame height: 1725 – 3070 mm

### Type of handling:

DIN right outside/inside  
DIN left outside/inside

### Design:

Flush-mounted galvanized and yellow chromated precision profile steel tubes "Fuego" T30 in shell design.  
Building depth: 65 mm  
Facing width: (door frame and leaf) 130 mm  
Plinth height: 90 mm  
bottom door edge with 10 mm gap as standard.  
Side part, top light: Door frame width 70 mm  
Special equipment: Glazing strip on both sides

### Side parts and top lights:

Permanently fixed to the door element (supplied separately for oversized doors and due to transportation reasons final assembly carried out by the customer on-site)

### Glass dividing bars:

Special equipment:  
Bar profiles 90 mm for horizontal or vertical division of the glass surfaces

### Surface:

- galvanized steel and primed similar to RAL 9002 or finished in RAL 9010, 9016 (powder coating),
- finished in RAL on choice or DB 701,702,703 an additional charge (powder coating)

### Fittings:

- 2 two-piece hinges on ball bearings to 2500 mm. Height > 2500 mm 3 two-piece hinges
- 1 security bolt (centrally located on the hinge side)
- slide channel door closer according to DIN EN 1154 on hinge side standard assembly
- With retractable bottom seal
- Fittings for RAL doors  
As standard in natural aluminium colour
- Latch-bolt lock, from a leaf height over 2500mm with upper locking

- Aluminium round handle set

### Leaf filling:

- Fire-resistant glass Pyrostop 30-10, 15 mm thick, profile caulk on one side, on the opposite side hidden assembled square steel glazing beads, delivery standard is unglazed

### Special equipment:

- Handle sets / Lever/Knob sets:
  - Plastic
  - Light metal
  - Stainless steel (various makes)
- Locks:
  - Panic locks
  - Block lock
- Panic bar handle (Pushbar)
- Door closer with smoke detector and hold-open device
- Electric door opener without manual unlocking
- Integrated lock inspector (bolt contact)
- Integrated opening indicator (Reed contact)
- Revolving door drives
- Hold-open devices
- Floor seals

### Extension profiles:

- Static profiles
- Fixed parts with sloping edges or recesses
- Top lights with basket, round or segmental arch

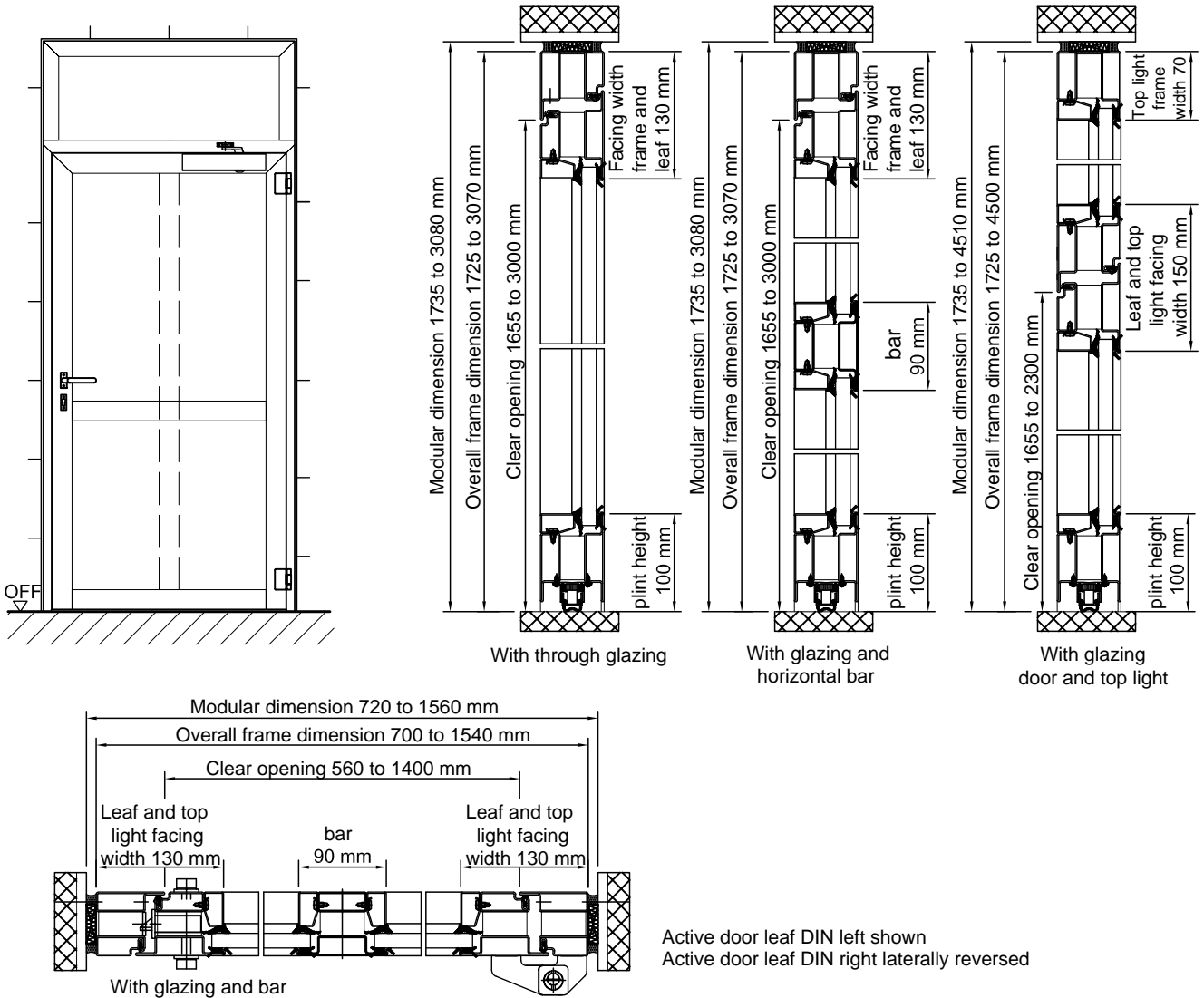
### Further qualifications: (Standard)



- ♦ **Smoke-proof in acc. with DIN 18095 for solid and lightweight construction stud walls**

# Fire-Resistant Tubular Profile Steel Door T 30-1-FSA System „Forster Fuego light“

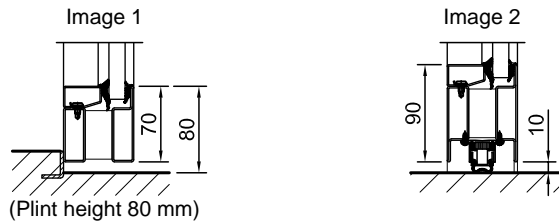
standard **smoke proof**, with glazing, optionally with top light/side part



(For detail drawings also refer to the Installation details tab)

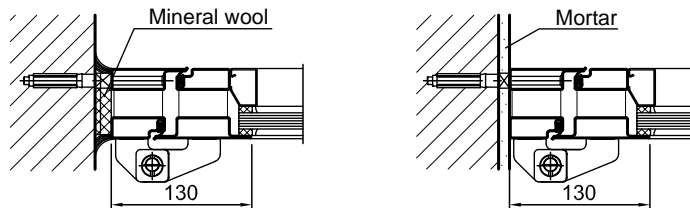
### Floor connections:

Image 1: With bottom buffer  
Image 2: With retractable bottom seal



### Installation in masonry/ concrete walls

Installation: Flush soffit  
concrete walls  $\geq 100$  mm  
masonry walls  $\geq 115$  mm



### Profiles:

Image 1: Bar profile  
Image 2: Plinth profile for leaf or side part

