

# Sound-Insulated Steel Door dw 52-2/S "Teckentrup DF"



**Rw = 42 dB**

## Text example

Compile and tender according to requirements.  
Please refer to Technical Data below for respective details.  
Updated 01.01.2011



Position	No. of pieces	Item	Unit price €	Total price €
		dw 52-2/S-sound-insulated door tested in accordance with DIN EN 20140, evaluation in accordance with DIN EN 717 Part 1. Double-leaf door element. Active door leaf DIN right. Door leaf galvanized and prime coated similar to RAL 9002 (grey white). 52 mm thick, thick rebated on 3-sides. Corner frame, galvanized and prime coated similar to RAL 9002 (grey white), 2 mm thick, with bottom buffer and 4-sided seal, active door leaf and mortice lock with lever/knob in accordance with DIN 18250, prepared for profile cylinder. FS round handle set, black (plastic). Handle pivoted on bearing, with tumbler insert (Bb) and 1 Bb key. Inactive door leaf with concealed door edge bolt. With central stop rail with seal at the inactive door leaf. 2 two-piece KO hinges with ball bearings per leaf. "Teckentrup" or equivalent.		

## Technical data

**Standard:** Tested in acc. with DIN EN 20140  
Evaluation in acc. with DIN EN ISO 717 Part 1  
Sound insulation value Rw = 42 dB

**Installation in:** Walls made of:

- Masonry
- Concrete

**Dimensions:** Width: 1375 – 2500 mm  
Height: 1750 – 2500 mm

**Type of handling:** Active door leaf DIN right or DIN left

**Door leaf:** Double-skinned, **thick rebated** on 3 sides  
Door leaf thickness: 52 mm  
Sheet thickness: 1 mm  
Security bolts per leaf: 3  
Reinforcement: U-shaped and flat steel  
Insulation: Mineral wool

**Frame:** 3-sided corner frame, 2 mm thick with bottom buffer and 4-sided seal,  
3 wall anchor plugs on each side

Special equipment:  
Counter frame

**Surface:** Galvanized and prime coated door leaf/frame similar to RAL 9002 (grey white)

### Hinges and closing

**devices:**

- 4 two-piece KO hinges with ball bearings

**Fittings:** Active door leaf:

- Mortice lock with lever/knob in acc. with DIN 18250, prepared for profile cylinder
- FS round handle set, black (plastic). Handle pivoted on bearing, with tumbler insert (Bb) and 1 Bb key.

Inactive door leaf:

- With concealed door edge bolt
- With central stop rail and seal

### Special

**equipment:**

- Handle sets / Lever/Knob sets:
  - Plastic
  - Light metal
  - Stainless steel
  - With short plate or rose escutcheon (various makes)
- Locks:
  - Profile cylinder 40.5 + 30.5 mm
  - Panic locks
- Top door closer DIN EN 1154

### Standard sizes:

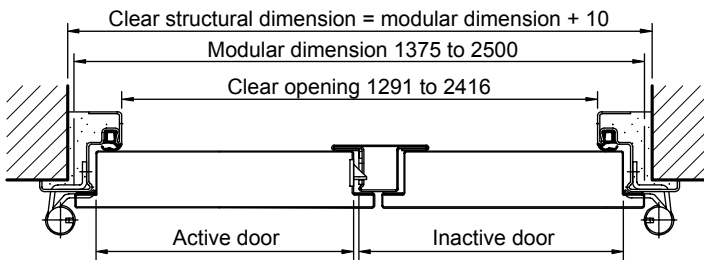
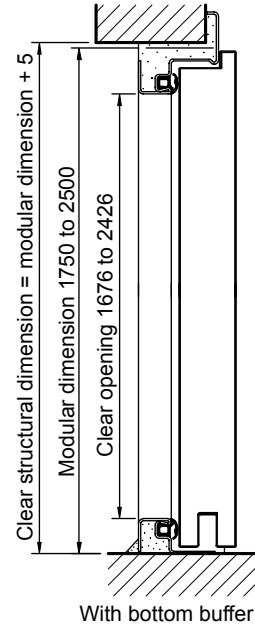
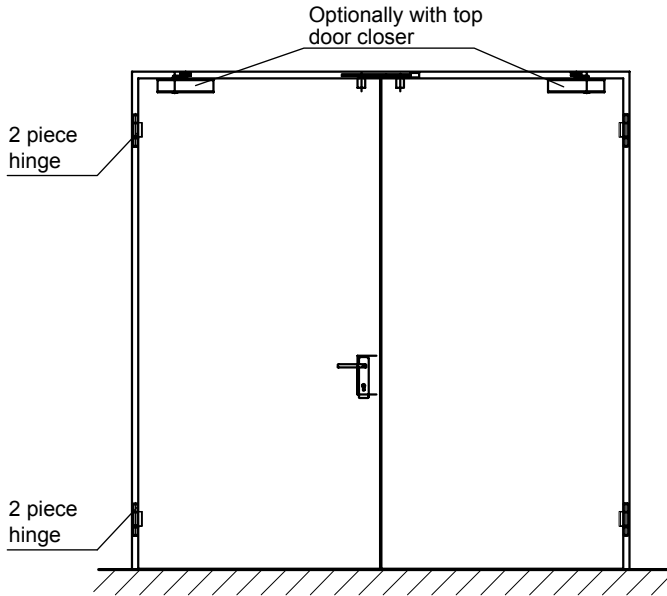
Ordering dimensions/ Modular dimensions width x height	Clear opening dimensions width x height
1500 x 2000	1416 x 1958
1750 x 2000	1666 x 1958
2000 x 2000	1916 x 1958
2000 x 2125	1916 x 2083
2125 x 2125	2041 x 2083
2250 x 2250	2166 x 2208
2500 x 2500	2416 x 2458

**Special sizes:** From 1375 x 1750 mm to 2500 x 2500 mm

# Sound-Insulated Steel Door dw 52-2/S "Teckentrup DF"



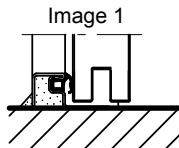
Rw = 42 dB



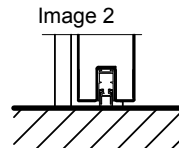
Active door leaf DIN left shown  
Active door leaf DIN right laterally reversed

## Floor connections:

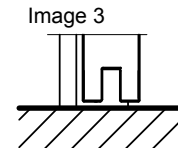
- Image 1: With bottom buffer
- Image 2: With retractable bottom seals
- Image 3: Without bottom buffer



Sound insulation RW 43



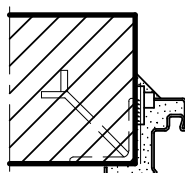
Sound insulation RW 38



Sound insulation RW 25

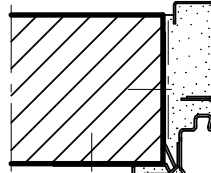
## Installation in masonry/ concrete walls

Weld-on assembly



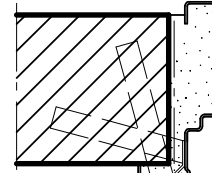
Corner frame

Wall plug assembly



Corner frame with counter frame

Wall anchor assembly



Closed frame