

Sound Insulated Steel Door dw 54-2/S "Teckentrup"



Rw = 44 dB

Text example

Compile and tender according to requirements.
Please refer to Technical Data below for respective details.
Updated 01.01.2011

Position	No. of pieces	Item	Unit price €	Total price €
		dw 54-2/S sound insulated door tested in accordance with DIN 52210. Double-leaf door element. Active door leaf DIN right. Door leaf/Frame galvanized and prime coated similar to RAL 9002 (grey white). 54 mm thick, rebated on 3-sides. Galvanized corner frame, 2 mm thick, with bottom buffer and 4-sided seal, active door leaf and mortice lock with lever/knob in accordance with DIN 18250, prepared for profile cylinder. FS round handle set, black (plastic). Handle pivoted on bearing, with tumbler insert (Bb) and 1 Bb key. Inactive door leaf with sliding bolt on the opposite hinge side. With central rebate seal, 4 three-piece hinges. "Teckentrup" or equivalent.		



Technical data

Standard: Tested in acc. with DIN 52210
Test certificate no.: 42 0540 087-12
Sound insulation value Rw = 44 dB

Installation in: Walls made of:

- Masonry
- Concrete

Dimensions: Width: 1375 – 3000 mm
Height: 1750 – 3000 mm

Type of handling: Active door leaf DIN right or DIN left

Door leaf: Double-skinned, **thin rebated** on 3 sides
Door leaf thickness: 54 mm
Sheet thickness: 1.5 mm
Security bolts per leaf: 3
with central rebate seal
Reinforcement: U-shaped and flat steel
Insulation: Mineral wool

Frame: 3-sided corner frame, galvanized, 2 mm thick
with bottom buffer and 4-sided seal,
with welded-on wall anchor plugs
Special equipment: Counter or closed frame

Surface: Galvanized and prime coated door leaf/frame
similar to RAL 9002 (grey white)

Hinges and closing

devices:

- 4 three-piece KO hinges with ball bearings

Fittings: Active door leaf:

- Mortice lock with lever/knob in acc. with DIN 18250, prepared for profile cylinder
- FS round handle set, black (plastic)
Handle pivoted on bearing, with tumbler insert (Bb) and 1 Bb key.

 Inactive door leaf:

- Sliding bolt on the opposite hinge side

Special

equipment:

- Handle sets / Lever/Knob sets:
 - Plastic
 - Light metal
 - Stainless steel
 - With short plate or rose escutcheon (various makes)
- Locks:
 - Profile cylinder 35.5 + 35.5 mm
 - Panic lock
- Top door closer DIN EN 1154

Standard sizes:

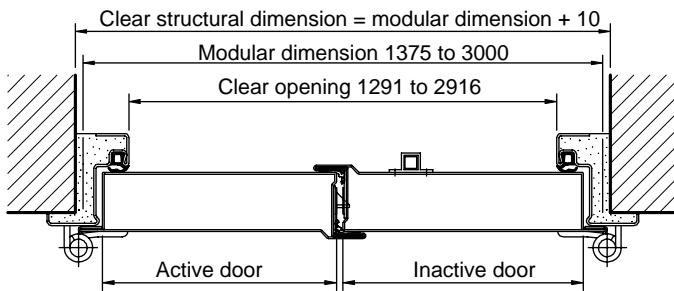
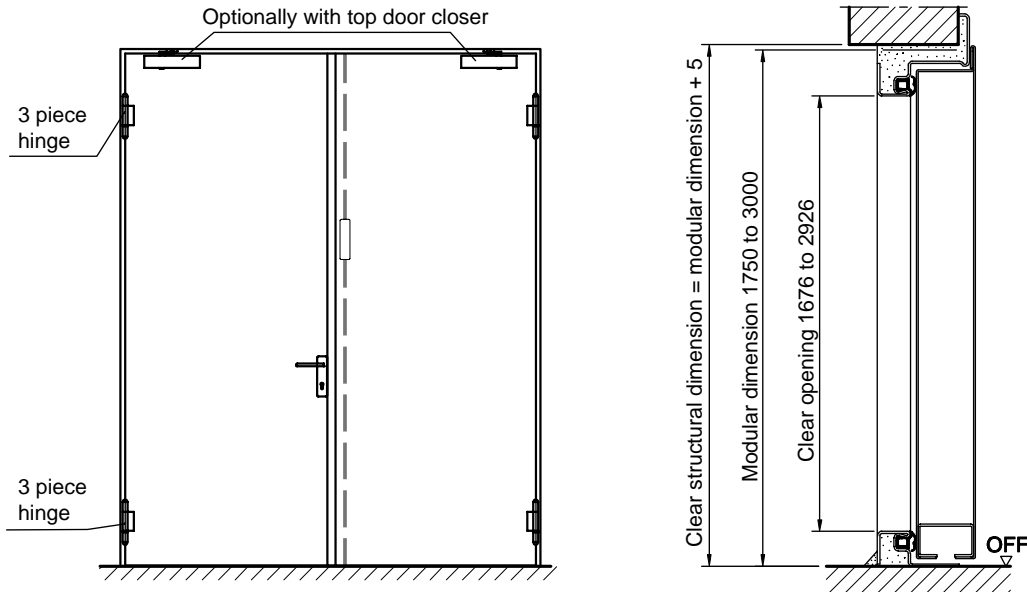
Ordering dimensions/ Modular dimensions width x height	Clear opening dimensions width x height
1500 x 2000	1416 x 1958
1750 x 2000	1666 x 1958
2000 x 2000	1916 x 1958
2000 x 2125	1916 x 2083
2125 x 2125	2041 x 2083
2250 x 2250	2166 x 2208
2500 x 2500	2416 x 2458

Special sizes: From 1375 x 1750 mm to 3000 x 3000 mm

Sound-Insulated Steel Door dw 54-2/S "Teckentrup"



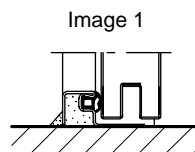
Rw = 44 dB



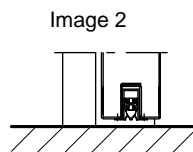
Active door leaf DIN left shown
Active door leaf DIN right laterally reversed

Floor connections:

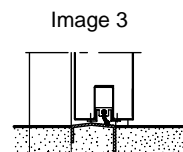
- Image 1: With bottom buffer/standard
- Image 2: With retractable bottom seals
- Image 3: Without bottom buffer



Sound insulation RW 44



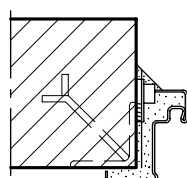
Sound insulation RW 40



Sound insulation RW 40

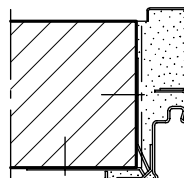
Installation in masonry/ concrete walls

Weld-on assembly



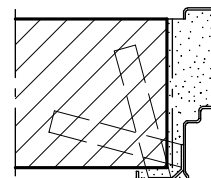
Corner frame

Wall plug assembly



Corner frame with counter frame

Wall anchor assembly



Closed frame