

# Bullet-proof steel door dw 64-1

## „Teckentrup BP“ Class FB4

(corresponds to Class M3 in accordance with German performance requirements)



Available with optional glazing in accordance with DIN EN 1063 - BR 4 (NS = shatter proof on the inside)

### Text example

Compile and tender according to requirements.  
Please refer to Technical Data below for respective details.  
Updated 01.01.2011

Position	No. of pieces	Item	Unit price €	Total price €
		dw 64-1 „Teckentrup BP“ FB4 bullet-proof single leaf steel door, double-skinned. Type of handling DIN right. Door leaf and frame galvanized and prime coated similar to RAL 9002 (grey white), 64 mm thick, rebated on 3-sides. 2.0 mm thick corner frame with 3-sided seal and bottom sill. 1 security bolt, 2 two-part KO hinges with ball bearings. „Teckentrup“ or equivalent.		



### Technical data

**Product:** Bullet-proof steel door  
dw 64-1 „Teckentrup BP“ FB4  
Tested in accordance with DIN EN 1522  
Class FB4

**Glazing:** In acc. with DIN EN 1063 BR 4,  
glass thickness 49 mm with steel  
holding strips NS shatter proof on the  
inside

**Installation in:**

- Masonry
- Concrete

**Special equipment:**

- Handle sets / Lever/Knob sets:  
(various makes)  
with fixed outer knob
- Locks
  - Profile cylinder 40.5 + 40.5 mm
  - Panic locks
- Floor seals
- Rectangular glazing (special size)
- Aluminum rain guard

**Dimensions:** Width: 750 – 1500 mm  
Height: 1750 – 3000 mm

**Type of handling:** DIN right or DIN left

**Door leaf:** Double-skinned, thick rebated on 3 sides  
Filling: Steel plate  
Mineral wool  
Gypsum board  
Door leaf thickness: 64 mm  
Sheet thickness: 1,5 mm  
Security bolt: 1

**Frame:** 2.0 mm thick corner frame with 3-sided seal  
and bottom sill. Frame fixed with screws,  
3 screws each side.

**Surface:** Galvanized and prime-coated door leaf and  
frame (grey-white), similar to RAL 9002.

**Hinges:**

- 2 two-part KO hinges with ball bearings,  
Secured hinge bolts.

**Fittings:**

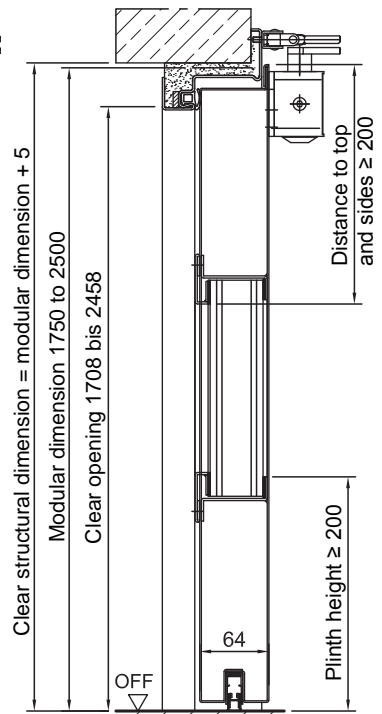
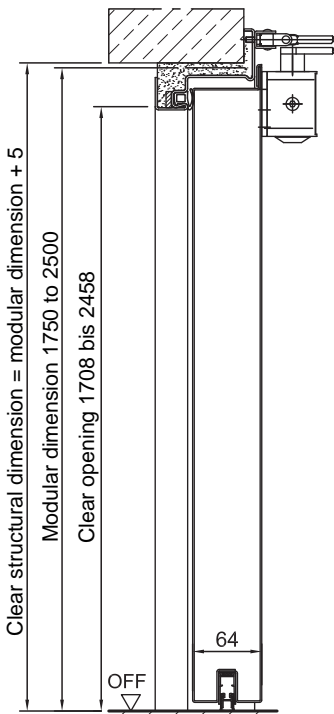
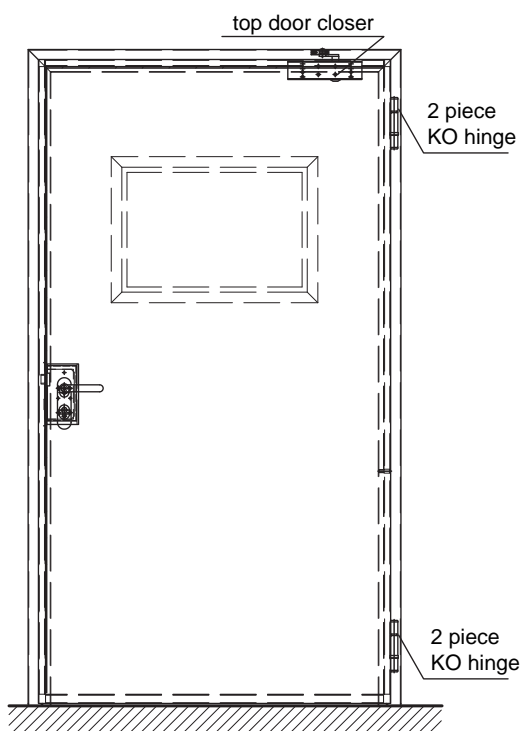
- Mortise lock prepared for profile cylinder.  
Plastic handle set black. Handle pivoted on  
bearing with tumbler insert (Bb) and 1 Bb key.

# Bullet-proof steel door dw 64-1

## „Teckentrup BP“ Class FB4

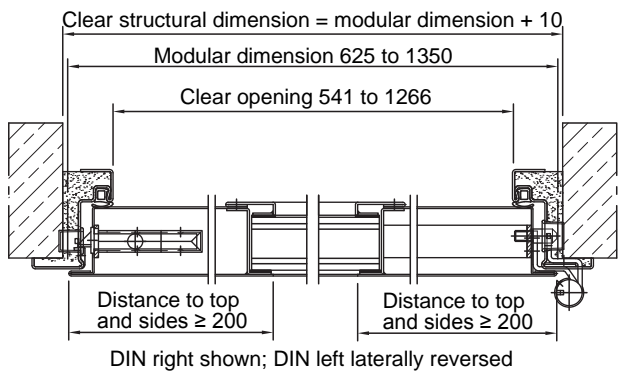
(corresponds to Class M3 in accordance with German performance requirements)

Available with optional glazing in accordance with DIN EN 1063 - BR 4 (NS = shatter proof on the inside)



Door leave with retractable bottom seal

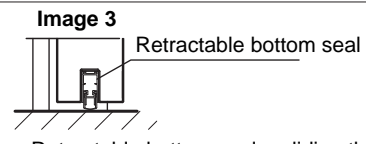
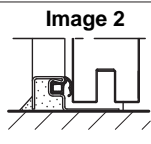
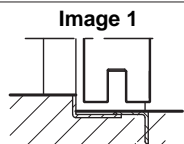
In acc. with DIN EN 1063 BR 4, glass thickness 49 mm with steel holding strips NS shatter proof on the inside



DIN right shown; DIN left laterally reversed

### Floor connections:

- Image 1: With bottom buffer
- Image 2: With bottom buffer/seal
- Image 3: With bottom seal

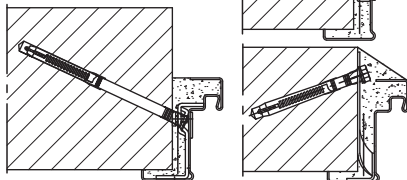


- Retractable bottom seal; - sliding threshold seal

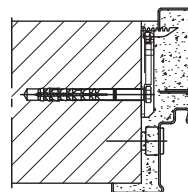
### Installation in masonry/ concrete walls

concrete walls ≥ 100 mm  
masonry walls ≥ 115 mm

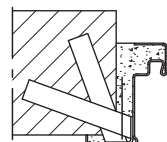
#### Wall plug assembly



#### Wall plug assembly - Closed frame and counter frame



#### Anchor assembly



#### Weld-on assembly

