

# prison cell door “Teckentrup”

Standard WK3



## Sample text

Compile and send depending on the requirement.  
Please refer to the following technical data for desired specifications.  
Version 01.09.2011

Position	Quantity	Object	Price per unit €	Total price €
		Prison cell door, double-skinned, smooth, 1-wing as a swing door with steel frame, double-skinned door leaf. Hinge type DIN right. Galvanised and prime coated door leaf/frame, grey-white similar to RAL 9002. 64 mm thick, rebated on 4 sides. Galvanised corner frame, 2.0 mm thick, with impact absorbing buffer in the frame, prepared for 3-sided rotation EPDM frame seal. Without floor recess with transport beam. Prepared for prison cell door lock provided by the customer; lockable from one side, spyhole with pivoted cover, concealed sliding bolt, made of flat steel bar, with an actuation handle. 2 security bolts. 2 three-part special hinges with ball bearings		
		Manufacturer “Teckentrup” or equivalent.		



## Technical data

**Product:** “Teckentrup” prison cell door  
Tested in accordance with the PTE Rosenheim GmbH regulations in collaboration with the VfS Verband für Sicherheitstechnik e.V. (association for security engineering) and its members, the responsible ministries of justice, and State Departments of Construction and Civil Engineering, Construction, Building and Infrastructure Service Authorities, prisons as well as manufacturers.

**Installation in:** Masonry  
Concrete

**Sizes:** Width: 750 – 1500 mm  
Height: 1750 – 2500 mm

**Hinge type:** DIN right or DIN left

**Door leaf:** Double-skinned,  
Rebated from 3 sides without a bottom buffer, or rebated on 4 sides with a bottom buffer, rebate width minimum 20 mm, (inner floor level minimum 15 mm above the outer floor level)  
Door leaf thickness: 64 mm  
Sheet thickness: 1.5 mm / 2 mm (cell side) thick, aligned steel sheets  
Security bolt: 2 solid, galvanised bolts on the hinge side

### Special equipment

- Door leaf:**
- Stainless steel safety chain (the door can be opened by approximately 30 cm; door protector made of stainless steel required on one side)
  - Stainless steel door protector, thickness 1.5 mm, on one side, 185 x 835 mm (standard), for the locking area with safety chain
  - Stainless steel door opener on one side / two sides
  - Special size of door protector as per the customer's requirement (width x height):
  - Retractable bottom seal
  - Additional security bolt
  - Slide seal
  - Food hatch 260 x 200 mm (easy opening), (Opening angle 90°/170°), with latch lock or prepared for security-grade lock
  - Food hatch with stainless steel support plate on the inside (for the 90° opening angle)
  - Food hatches with or without rubber seal
  - Food hatch with special size (width x height):
  - Window for the 200 x 200 mm section, P6B-glazing, 17 mm thick
  - Special glazing on request
  - Special-sized window, window section (Width x height): \_\_\_\_\_
  - Window cover as single-skinned metal plate with revolving door function, piano hinge with magnetic locking / magnetic locking with slide bolt
  - Window cover as double-skinned metal plate with revolving door function, with latch or deadbolt lock
  - Shackle hatch with revolving door function
  - 2 mm sheet on the corridor side

- Frame:**
- Corner frame made of galvanised sheet steel, 2.0 mm thick, with impact absorbing buffer in the frame, prepared for 3 sided rotation, EPDM frame seal
  - Without floor recess with transport beam
  - 3 robust double wall anchors on each side.

### Special equipment

- Frame:**
- Prepared for bolt contact
  - Corner frame made of galvanised sheet steel, 3.0 mm thick, with impact absorbing buffer in the frame, prepared for 3 sided rotation, EPDM frame seal
  - Closed frame made of galvanised sheet steel, 3.0 mm thick, without frame seal
  - Counter frame made of galvanised sheet steel, thickness 1.5 mm, 2.0 mm or 3.0 mm
  - Optionally with frame seal

- Surface:**
- Galvanised and prime coated door leaf/frame Similar to RAL 9002 (grey-white)

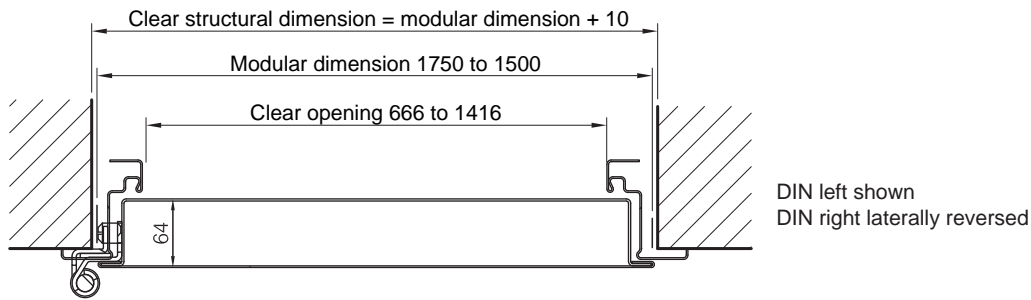
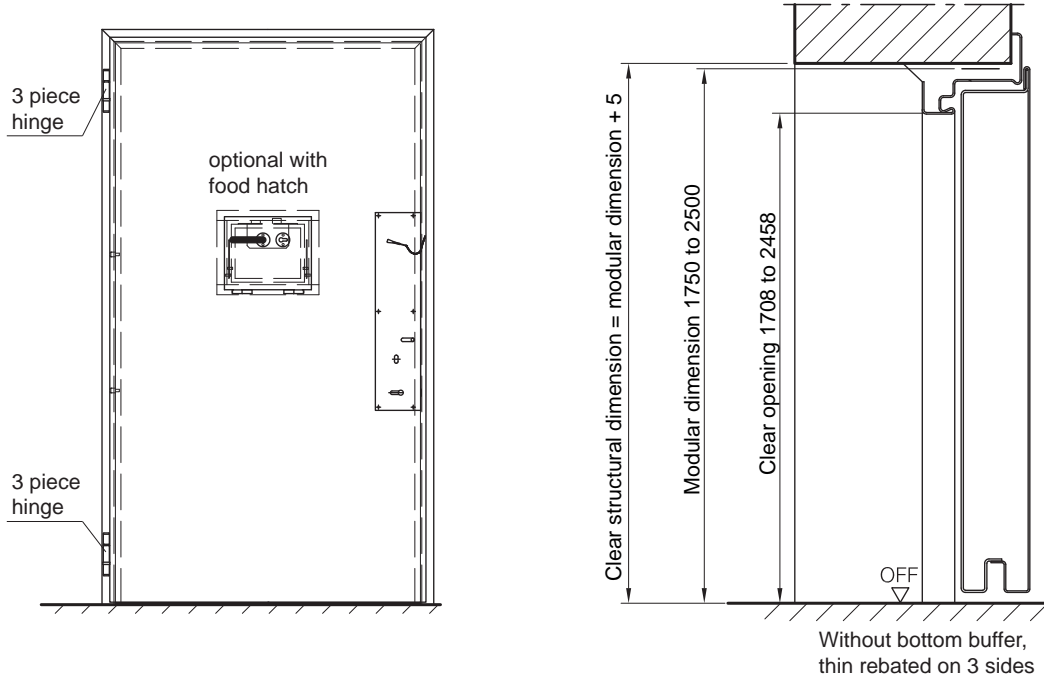
- Fittings:**
- Two 3-part special hinges, galvanised, with ball bearings and hinge protection
  - Prepared for on-site prison cell door lock provided by the customer  
Manufacturer: STUV, Technolog, Schlechtendahl, etc.  
Special lock case for lock provided by the customer including cut-out for inserted face plate.
  - Prepared for rosettes and/or plates to match locks provided by the customer
  - Light metal door knob

### Special equipment

- Fittings:**
- Wide angle spyhole with opening/closing cover, standard height: 1550 mm
  - Prepared for spyhole provided by the customer
  - Rotating spyhole (wide angle / tablet hatch / closed)
  - Special spyholes on request
  - Inner sliding bolt made of flat steel 30 x 10 mm, with steel actuating handle, 1 piece below the lock or 2 pieces below and above the lock.
  - Prepared for prison cell door lock provided by the customer with locking from both sides
  - Prepared for prison cell door lock provided by the customer with mortise lock function; prepared for prison cell door lock provided by the customer with E-connection and concealed cable access point
  - Upper door closer
  - 3rd hinge at the centre
  - Door stopper, floor or wall installation

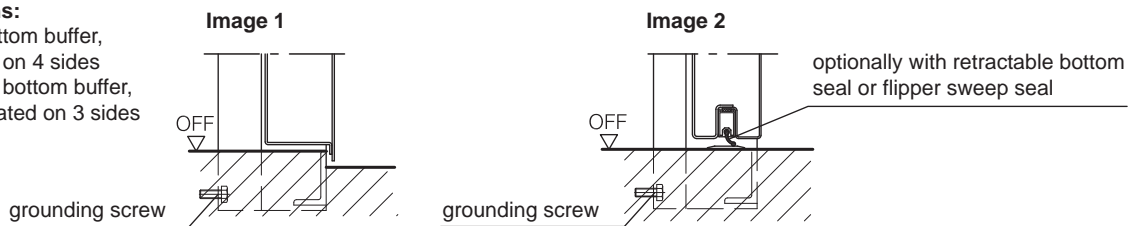
# prison cell door „Teckentrup“

Standard WK3



## Floor connections:

Image 1: With bottom buffer, rebated on 4 sides  
Image 2: Without bottom buffer, thin rebated on 3 sides

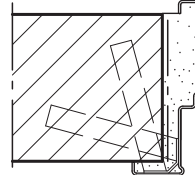
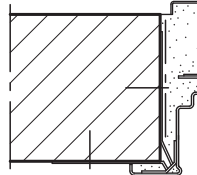
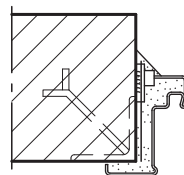


## Installation in masonry/ concrete walls (mortar back-filling)

Weld-on assembly

Wall plug assembly

Wall anchor assembly



Corner frame

Corner frame with counter frame

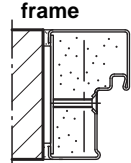
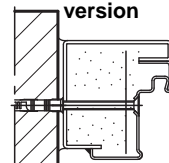
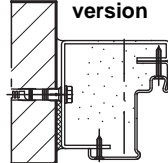
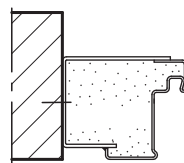
Closed frame

Standard

disassembled version

Pre-assembled version

Special block frame



Block frame type 1

Block frame type 2

Block frame type 3

Block frame type 4