

### Text example

Compile and tender according to requirements.  
Please refer to technical data below for respective details.  
Updated 1<sup>st</sup> June 2015

| Position | No. of pieces | Item  | Unit price € | Total price € |
|----------|---------------|---|--------------|---------------|
|          |               | Single-skinned garage door ew-2. Double-leaf element. Outside type of handing. Door leaf frame made of special hollow profiles 50 mm thick with flange for holding the infill. Two rear reinforcement elements. Door leaf with vertically ribbed sheet steel panels and galvanized and powder coated corner frame, similar to RAL 9016 (Traffic white). Corner frame, 4-sided. Special lock with latch lever, prepared for profile cylinder. Black round handle set (plastic). 4 two-piece special hinges "ew-2" or equivalent. |              |               |

### Technical data

**Product:** Garage door ew-2

**Installation in:**

- Masonry
- Concrete

**Dimensions:** modular dimension-width: 1350 - 2500 mm  
modular dimension-height: 1750 - 2250 mm

**Handing:** DIN left outside/inside  
DIN right outside/inside

**Door leaf:** Leaf frame made of special hollow profiles 50 mm thick with flange for holding the infill. Two rear reinforcement elements.  
Door leaf filled with vertically ribbed galvanized sheet steel, optionally horizontally ribbed, sheet steel  
Special equipment – filling: corrugated grille, perforated sheet Ø10x14

**Door leaf thickness:** 50 mm

**Frame:** Corner frame 2 mm thick, galvanized and powder coated similar to RAL 9016 (Traffic white), with seal.  
With three welded-on wall anchor plugs on each side.  
Special equipment: block frame

**Surface:** Door leaf frame/door leaf filling powder coated similar to RAL 9016 (Traffic white). Other RAL colours at an additional charge. Door leaf filled with panels with woodgrain design surface.

**Fittings:**

- 4 special hinges
- Special lock prepared for profile cylinder with latch lever, can be used left/right, black round handle set, (plastic)
- With 2 door leaf fixing devices at the header and two security bolts on each side

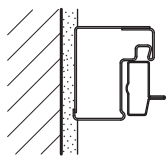
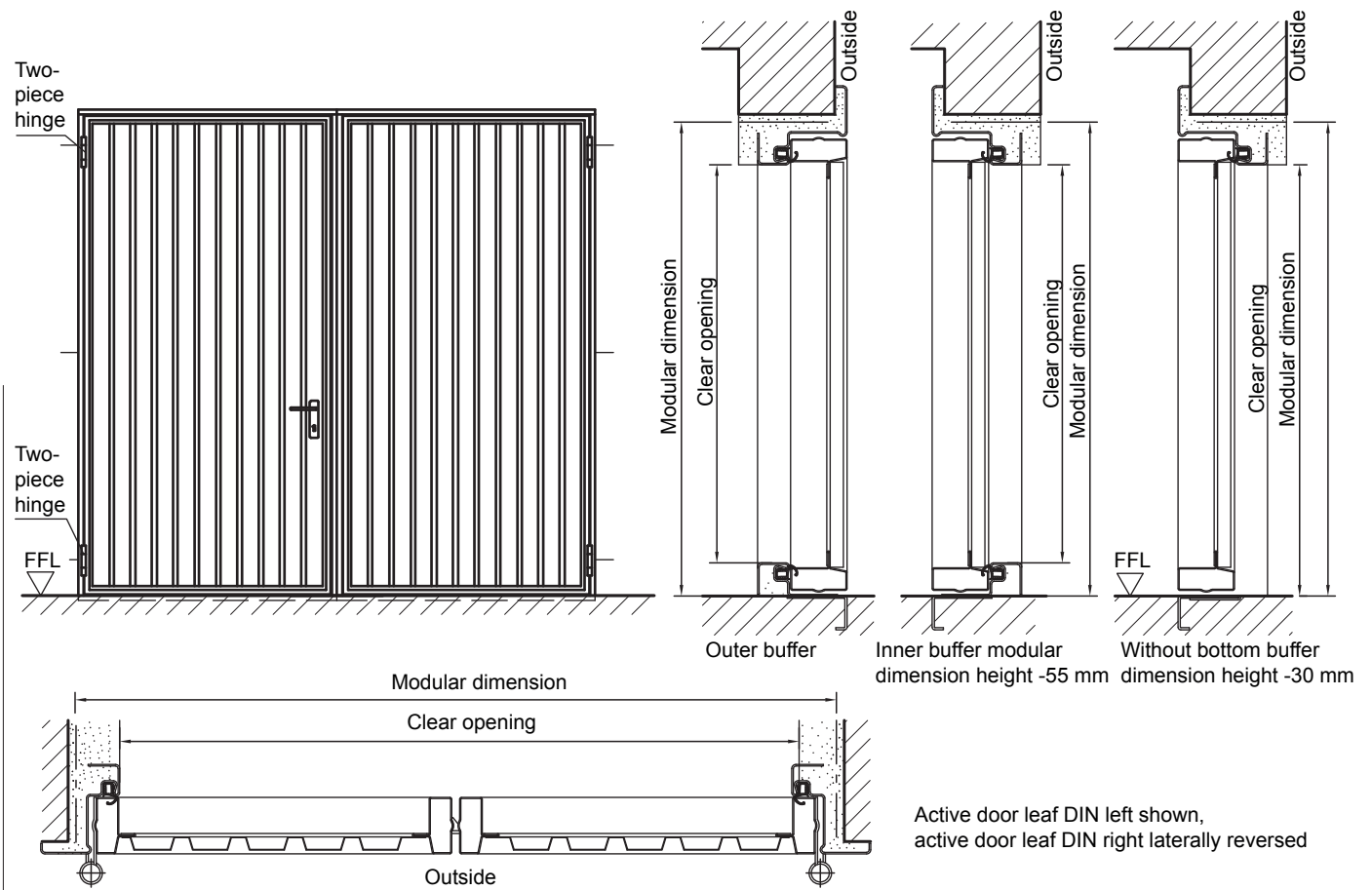
Special equipment:

- Profile cylinder (same closing as the up-and-over door type) 30.5 + 30.5 mm

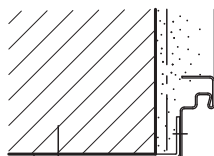
**Standard sizes:**

| Ordering dimensions (modular dimensions) width x height | Clear passage size width x height |                |
|---|-----------------------------------|----------------|
|   | with buffer                       | without buffer |
| 2000 x 2000   | 1934 x 1930                       | 1934 x 1930    |
| 2125  | 2055                              | 2055           |
| 2250 x 2250   | 2184 x 2180                       | 2184 x 2180    |
| 2500 x 2125   | 2434 x 2055                       | 2434 x 2055    |

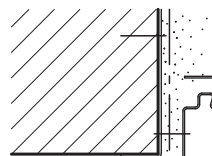
**Special sizes:** from 1350 x 1750 to 2500 x 2250 mm



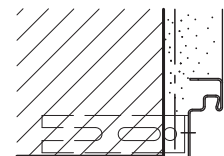
Block frame



Plug assembly  
Version 1

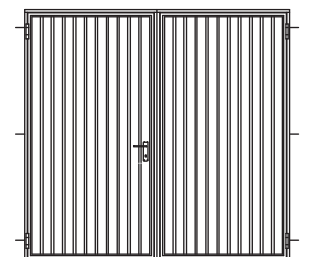


Plug assembly  
Version 2

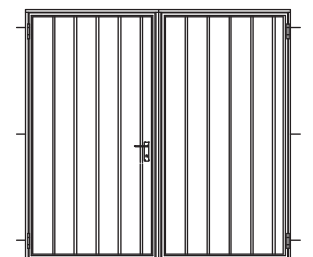


Wall anchor assembly

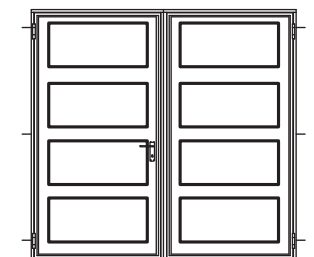
**Door leaf versions**



Steel vertically ribbed



Steel panels



Steel panel  
(Georgian/cassette)