



Cellar security door HT 8 „Teckentrup“ WK 2

suitable for left/right usage, with Fire-resistant class T30

Text example:

Cellar security door HT 8 „Teckentrup“, tested in accordance with DIN ENV 1627-WK 2. Single-leaf, suitable for left/right usage door element. Door-leaf 42 mm thick, rebated on 4-sides with and bottom sill. Corner frame 2.0 mm thick, with 4-sided seal. Door-leaf and frame galvanized and powder-coated (primed) in Grey white, similar to RAL 9002. Triple locking system. FS-Alu safety-handle set, class ES 1 DIN 18257. Safety profile cylinder with anti-drilling and extraction protection BZ, DIN 18252. 3 keys and security certificate. 1 KO hinge with ball bearings. 1 spring hinge secured hinge bolt, 1 security bolt.

Cellar security door „Teckentrup“ or equivalent.

(Compile and tender according to requirements. Please refer to technical data below for respective details. Updated 1. July 2017.)

Technical data

Product	Cellar security door HT 8 „Teckentrup“ accordance with DIN ENV 1627-WK 2 with Fire-resistant class T30 Heat insulation $U_D = 1.9 \text{ W}/(\text{m}^2\cdot\text{K})$ Sound insulated 39 dB		Additional equipment	<ul style="list-style-type: none"> ▪ Handle sets / Lever/Knob sets double-sided pusher for passdoor ▪ Locks profile cylinder 35,5 + 30,5 ▪ Top door closer DIN EN 1154 ▪ Wide angle spyhole ▪ Security chain (also lockable) ▪ Rain guard
Installation in	<ul style="list-style-type: none"> ▪ Masonry min. 115 mm ▪ Concrete min. 100 mm ▪ Autoclaved aerated concrete min. 150 mm 			
Dimensions	width: 750 - 1125 mm height: 1875 - 2125 mm			
Type of handing	Suitable for left/right usage			
Door leaf	Double-skinned, thin rebated on 4 sides, with bottom buffer seal (special size thin rebated on 3 sides, without bottom buffer seal) Door leaf thickness: 42 mm Sheet thickness: 0,9 mm Security bolt: min. 1 Reinforcement: flat steel Insulation: mineral fibre board			
Frame	Corner frame 2 mm thick, with 4-sided seal, Threshold - attached Installation of frame: screw-mounting Special equipment: counter frame 1,5 mm thick			
Surface	Door leaf/Frame galvanized and powder coated (primed) similar to RAL 9002 (Grey white). Additional equipment: RAL of choice			
Hinges, closing devices	<ul style="list-style-type: none"> ▪ 1 KO hinge with ball bearings ▪ 1 spring hinge (secured hinge bolt) 			
Fittings	<ul style="list-style-type: none"> ▪ Triple locking system, prepared for profile cylinder ▪ FS-Alu safety-handle set, class ES 1 DIN 18257 ▪ Safety profile cylinder with anti-drilling and extraction protection BZ, DIN 18252 ▪ 3 keys and security certificate 			
			Ordering size/ modular dim. width x height	Clear passage size (corner frame) width x height
			Standard sizes	
			750 x 2000 2125	680 x 1934 2059
			875 x 1875 2000 2125	805 x 1809 1934 2059
			1000 x 1875 2000 2125	930 x 1809 1934 2059
			1125 x 2125	1055 x 2059

Further Qualifications
(Special equipment)

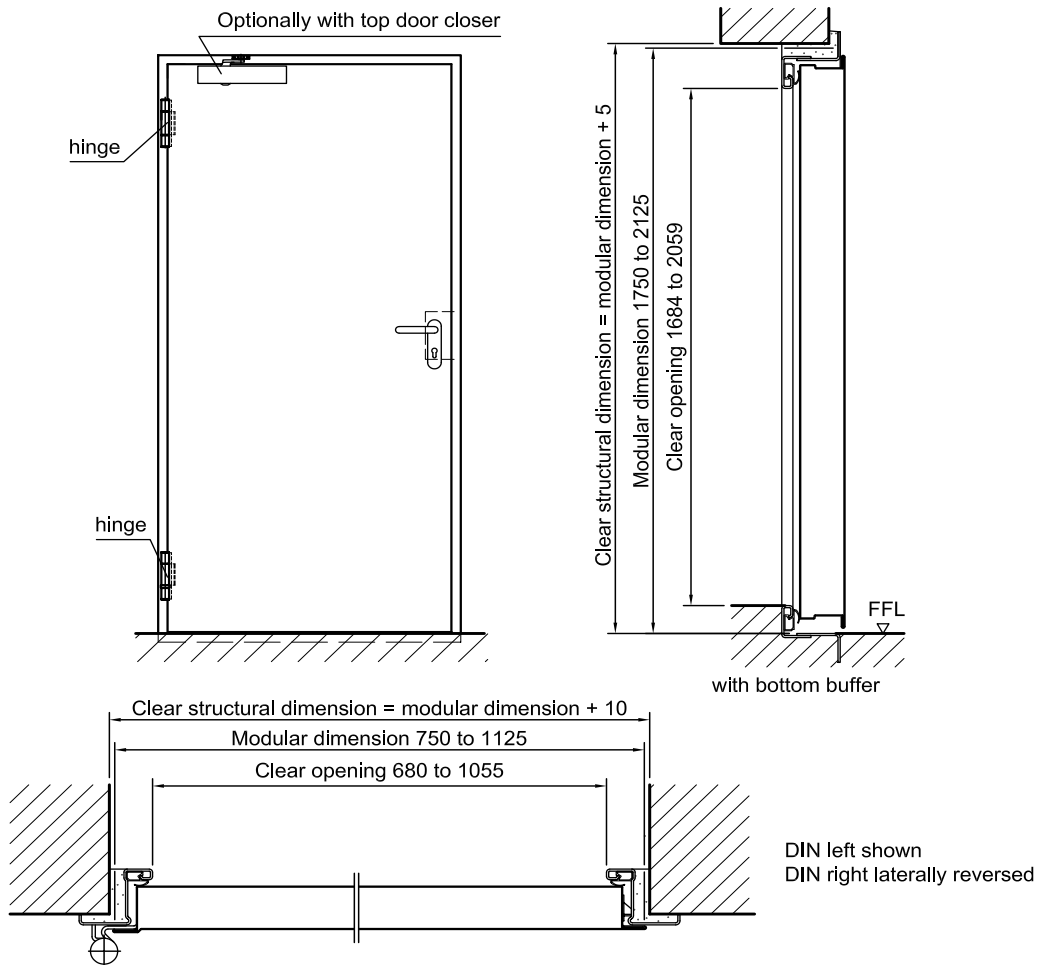


Sound insulated in acc. with DIN EN 20140/717 Part 1
RW 39dB with bottom buffer and seal
RW 37dB with double sliding threshold seal



Cellar security door HT 8 „Teckentrup“ WK 2

suitable for left/right usage, with Fire-resistant class T30



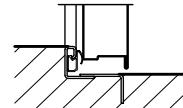
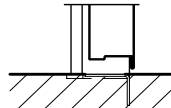
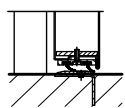
Floor connections

Image 1: double sliding threshold seal
Image 2: without bottom buffer
Image 3: with bottom buffer/seal

Image 1

Image 2

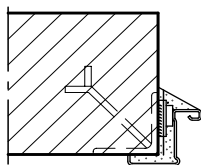
Image 3



**Installation in masonry/
concrete walls**

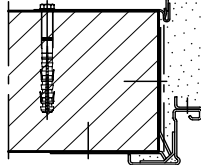
concrete walls ≥ 100 mm
masonry walls ≥ 115 mm

Weld-on assembly



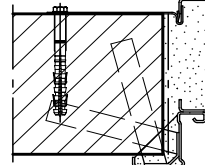
(Corner Frame)

Wall plug assembly



(Corner Frame with counter frame)

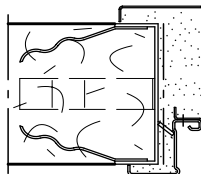
Wall anchor assembly



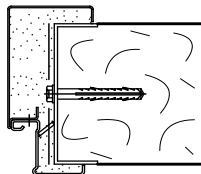
**Installation in autoclaved aerated
concrete walls**

Made of autoclaved aerated
concrete blocks or high precision
units in acc. with DIN 4165 strength
class 4 min. 150 mm or made of
reinforced autoclaved aerated
concrete slabs strength class 4.
Wall thickness ≥ 150 mm

Wall anchor assembly



Wall plug assembly



Wall plug assembly

