

# FASTER & EASIER TO INSTALL

The CarTeck Frame 2.0 sectional door for the installer

## Advantages

- ✓ Time saving
- ✓ Easier installation
- ✓ Fewer individual parts



## Faster & Easier to install with the CarTeck Frame 2.0

Our enhancement is based on your installers requirements.

We put you, our customers, at the centre of our developments. Why do we do this? To improve our services and our products and give you an immediate advantage. With fewer individual parts, the CarTeck Frame 2.0 simplifies and speeds up installation considerably.

**What this means for you:**

**Less time and effort for installation!**

See the many advantages of our CarTeck garage doors for yourself at [www.teckentrup.co.uk](http://www.teckentrup.co.uk).

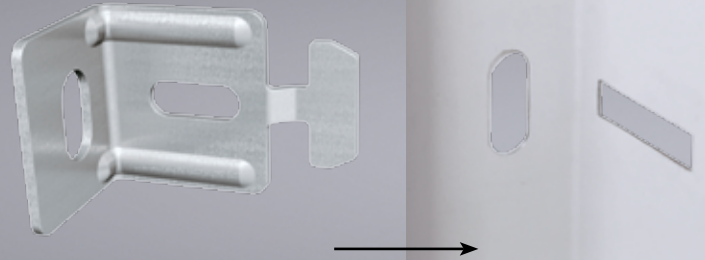
**CarTeck Frame 2.0:  
Now with a shorter  
track system also  
for garages with  
limited depth.**

A reduced number of Horizontal Track Supports – this means that you now only need 2 hanging brackets on each side of the door – the need to brace the front curve is now gone. This, combined with our low headroom throughout the range, makes, in our opinion, CarTeck the easiest range of sectional doors to install either between or behind the opening – read on to find out more!

# Save installation time with the advantages of CarTeck Frame 2.0!

## 1 “Twist & Fix”

- “Twist & Fix” track brackets for faster and easier installation of the frame legs
- Track brackets can be discarded for doors weighing less than 70 kg which is approximately 60% of all doors fitted
- For larger doors, up to 12 fewer nuts and bolts screws are needed when “twist & fix” brackets are used



## 2 Easy “Pull & Place” spring tensioning

- No more time-consuming tensioning using the adjusting screw
- The tension is adjusted by simply “Pulling & Placing” the cable into the adjustment slots now within the frame leg
- No protruding threaded adjustment rods- a space saver



## 3 Less complex, easier installation

- Fewer individual parts reduce installation time
- Easy-to-understand installation instructions, available for download
- Long-term, low-maintenance solution

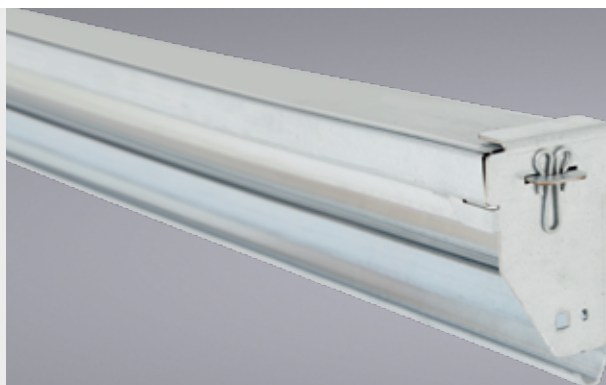


## 4 The best solution for between the reveal installation

- For doors upto 4267x2250 mm the option on no holes in the face of the frame
- This means 3D cover profiles are not required
- On all door options 3D profiles are still available

## 5 Reduced depth into the garage

- Depending on the dimensions and weight of the door, a smaller insertion depth upto 450 mm is possible
- No adjusting screw
- Fewer horizontal track supports



## 6 Reliable, long-lasting spring system

- Additional safety\*: A very safe system just got safer
  - The design improvements also includes an end cap on the spring tray that securely & safely holds the spring tray cover in place
  - The end cap is then supplemented with the introduction of spring tray cover clips
- The spring is more securely held with a hook within the spring channel
- Improved design for the fixing of the horizontal track and spring tray

\*for a single spring channel (120 mm headroom)

To request detailed installation instructions, please contact [sales@teckentrup.co.uk](mailto:sales@teckentrup.co.uk) or download the instructions at [teckentrup.co.uk/download](http://teckentrup.co.uk/download)

Punched holes for attaching the logo are no longer needed as the logo is glued on.



WE ARE PLEASED TO ADVISE YOU!