

ONE FOR ALL. BECOMING SMART WITH HOMEE – ANYTIME AND ANYWHERE

First and foremost Smart Home should be: Easy to install and easy to extend. That is why we choose homee.

And this is how it works

Since many devices differ in the radio technology that they use to communicate, a modular solution which allows communication amongst devices regardless of the technology they use, will be the best solution for you. Based on the central cube – the **Brain Cube** – which collects and stores all information, there is a different cube for every radio technology. By adding on further cubes onto the brain cube, you may include devices with new radio technology in a trouble-free manner.¹⁾

Brain Cube (WIFI)

Compatible with Smart Home Systems: Belkin, Netatmo, HomeMatic, AVM FRITZ!DECT, EUROtronic etc.

ZigBee Cube

Compatible with Smart Home Systems: Philips Hue, OsramLightify, Bitron, IKEA TRÅDFRI, Belkin, Paul Neuhaus, Schwaiger, etc.

EnOcean Cube

Compatible with Smart Home Systems: AFRISO, Eltako, Hoppe, NodOn, Omnio, etc.

Z-Wave Cube

Compatible with Smart Home Systems: Aeotec, Danfoss, Devolo, Everspring, Fibaro, Popp, Philio, Qubino etc.

Advantages for you: Quick and easy installation

Without having to change anything in your house or apartment, you can set up homee in just a few steps. All devices can be controlled via the free app or via the web surface.

Extendable anytime and anywhere

Your home is already smart – but you want more? Not a problem. You can add further cubes and thus additional radio technologies at any time.

Security all-round

Instead of using the internet, all your data is stored locally on your homee.



Starter Package

Content

- homee Brain Cube + Z-Wave Cube
- Aeotec Multi-Sensor 6
- Aeotec garage door control and surveillance



RRP **399 €** incl. VAT

Safety Solution

Content

- Netatmo Presence (via WIFI)



RRP **299 €** incl. VAT
available as of Q2/2019

Only working in conjunction with starter package.

Lighting Solution

Content

- homee ZigBee Cube
- Teckentrup frame illumination incl. ZigBee-Controller



RRP **299 €** incl. VAT
available as of Q3/2019

Only working in conjunction with starter package.

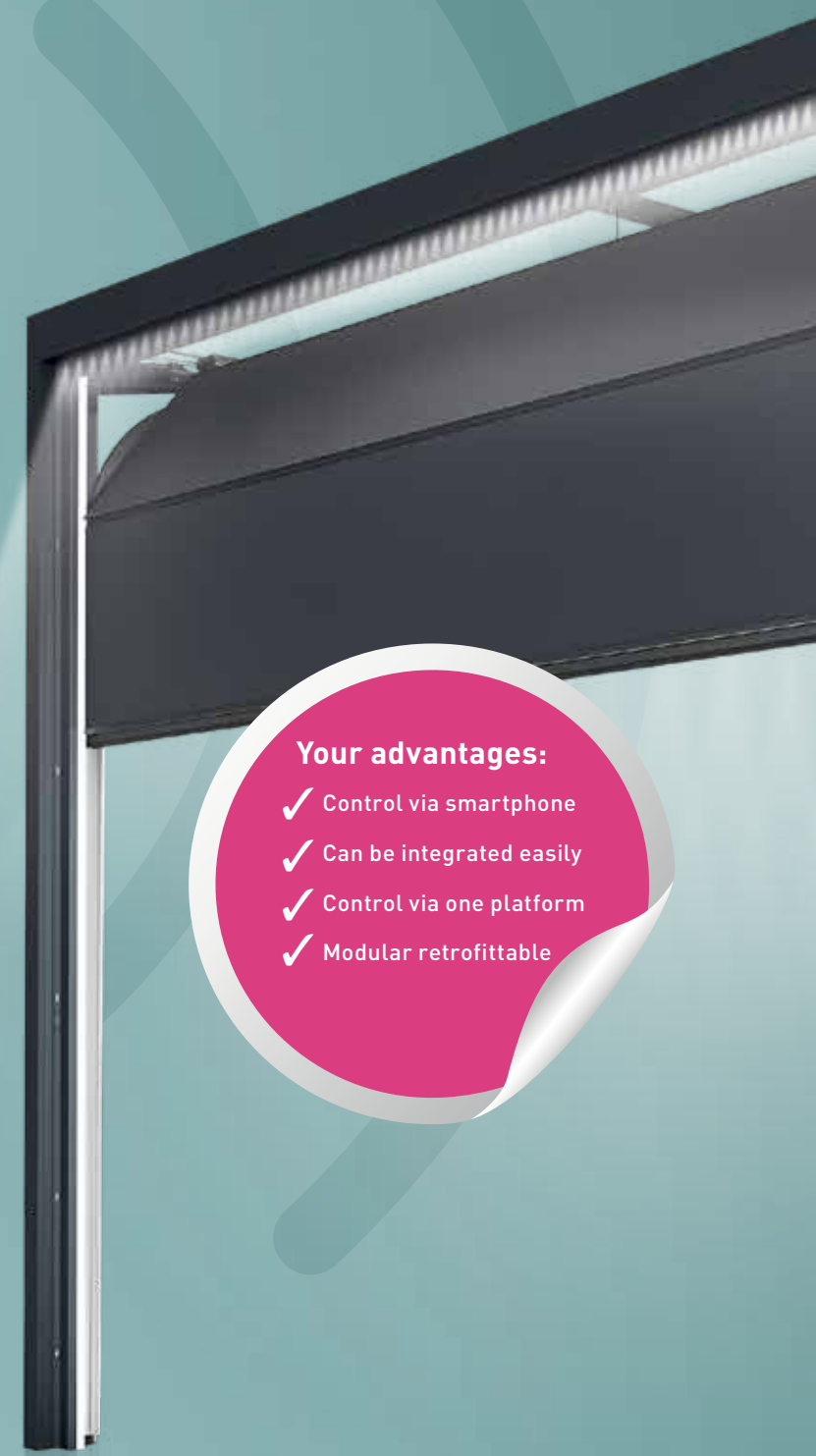
SMART GARAGE DOOR SOLUTIONS.

Easy. Smart. Flexible



Your advantages:

- ✓ Control via smartphone
- ✓ Can be integrated easily
- ✓ Control via one platform
- ✓ Modular retrofittable



¹⁾ Please find further information on compatibility and scope of function on <https://hom.ee/>

WE OPEN UP DOORS AND GATES – FOR SMART HOME



CarTeck is going smart

From lighting to the heating controls, up to the entertainment system: Smart Home is the trend of our time and contemporary households can already today hardly be imagined without it.

And this technology's potential is far from being exhausted. Quite the contrary: There are no limits to increasing the comfort from smart ideas – both in one's own four walls and in front of them.

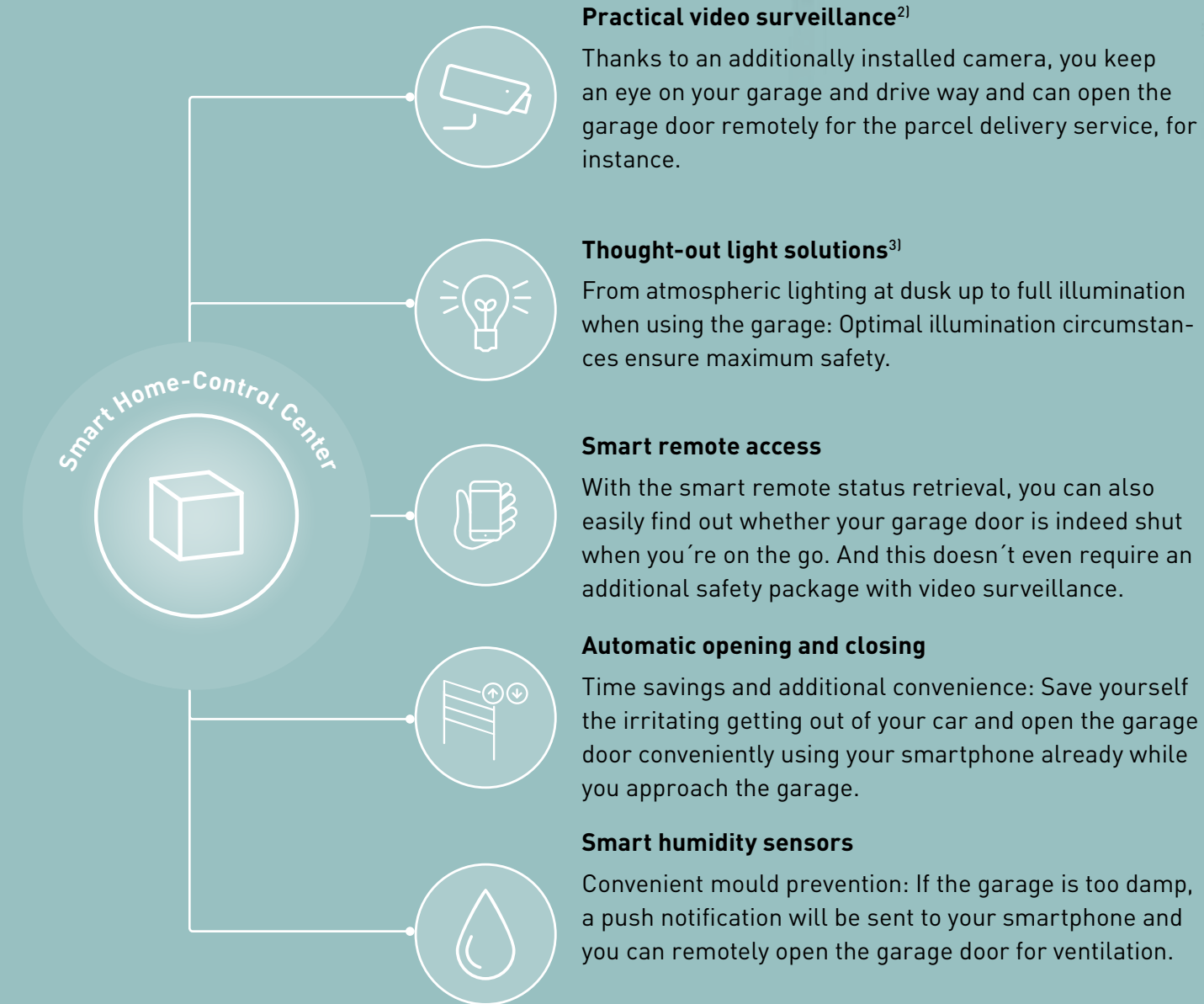
Ever more homeowners also want the garage door to be part of the Smart Home system and for it to be conveniently operable using a smartphone.

You have wishes. We have the solutions.

Who wants to make their life easier and more comfortable will equip their home with Smart Home solutions. Modern home automation increases safety and comfort in everyday life and assists in saving energy. Many of the systems on the market are individually adaptable, however, in general they are not compatible with each other and therefore require their own control systems to operate.

For the smart integration of our CarTeck garage doors we have thus developed a simple and flexible solution concept: homee is compatible with most common Smart Home Systems. This allows you to quickly add further components and overall controlling is available via a single platform. Smart Home how it is meant to be.

OUR SMART INNOVATION



²⁾ In conjunction with the safety package.

³⁾ In conjunction with the lighting package.

WITHOUT ANY COMPROMISE

Smart Home for everyone ...

The objective is more convenience. The ways to get there differ. Whereas one person uses Z-Wave or ZigBee for their Smart Home solution, someone else opts for WLAN. For all your customers to benefit from our convenient integration, we have opted for an independent cross-radio protocol solution with which all systems can be used centrally on one platform.

... and according to individual needs

Not everybody wants everything at once. And not everybody wants the same things. That's why we have developed various package solutions. This allows your customers to integrate the CarTeck garage door in their Smart Home system according to their desires and needs.

Package 1

The Starter Package

The starter package promises a significant increase in comfort. With this package you may comfortably open and close your old garage door via smart phone. Besides, one glance on your smart phone screen is enough to know everywhere and at all times whether the garage door is opened or closed. And no grounds for moisture and mould with the starter package as it includes a multi-sensor that measures the temperature and humidity and it can even indicate brightness and movement within the garage.

Package 2

The Safety Solution

If, in addition to comfort, increased safety is a requirement, this package including a FULL HD outside camera is a good choice. Thanks to object recognition and a push notification sent, the owner will receive a query to remotely open the garage. Ideal, when for example the delivery service is waiting at your door and you are not home. Further, it offers floodlighting for surveillance in the dark, saves videos and supports live-stream broadcasting.

Available as of Q2/2019

Package 3

The Lighting Solution

Regardless, whether automatic lighting whilst approaching the garage or a time-controlled dimming is in demand:

The lighting package comprising the newly developed frame illumination supplies ideal lighting conditions according to your needs. It provides outside lighting for the garage door and the yard and puts the spotlight on your garage door.

Avialable as of Q3/2019