

## CarTeck Sectional door GSW 40-L

Double-skinned steel door panels 40 mm  
 optionally with glazing, optionally with wicket door

### Text example:

Garage sectional door, door leaf consisting of individual double-skinned steel door panels, galvanized surface, PUR foam core. Building depth 40 mm, outer surface woodgrain, inner surface stucco design. Outer colour Traffic white similar to RAL 9016, inner colour Grey white similar to RAL 9002. Door sections with central seal and floor seal. Frame with lateral strips. All fittings made of galvanized steel, lateral guidance via maintenance-free, adjustable rollers. Weight compensation via multiple spring/double cable system, tension springs housed in a spring duct above the horizontal guide rails. "CarTeck GSW 40-L" or equivalent.

Compile and tender according to requirements. Please refer to technical data below for respective details. Updated 1. April 2018

### Technical data

<b>Product</b>	Garage sectional door GSW 40-L <ul style="list-style-type: none"> <li>▪ Heat insulation U-value:               <table style="margin-left: 20px; border: none;"> <tr> <td>- 0,56 W/(m<sup>2</sup>•K)</td> <td>(40 mm panel)</td> </tr> <tr> <td>- 0,95 W/(m<sup>2</sup>•K)</td> <td>(only door leaf)</td> </tr> <tr> <td>- 1,48 W/(m<sup>2</sup>•K)</td> <td>(complete door, door surface 10 m<sup>2</sup>)</td> </tr> </table> </li> </ul>	- 0,56 W/(m <sup>2</sup> •K)	(40 mm panel)	- 0,95 W/(m <sup>2</sup> •K)	(only door leaf)	- 1,48 W/(m <sup>2</sup> •K)	(complete door, door surface 10 m <sup>2</sup> )	<b>Locking</b>	With manual locking mechanism (up to door width of 5000 mm)
- 0,56 W/(m <sup>2</sup> •K)	(40 mm panel)								
- 0,95 W/(m <sup>2</sup> •K)	(only door leaf)								
- 1,48 W/(m <sup>2</sup> •K)	(complete door, door surface 10 m <sup>2</sup> )								
<b>Installation in</b>	<ul style="list-style-type: none"> <li>▪ Masonry</li> <li>▪ Concrete</li> <li>▪ Autoclaved aerated concrete</li> <li>▪ Wooden framework</li> </ul>	<b>Weight compensation</b>	Via multiple tension spring/double cable system housed in a micro-profiled spring duct above the horizontal guide rail.						
<b>Dimensions</b>	width: 2000 - 5500 mm height: 1875 - 3000 mm	<b>Surface protection:</b>	<ul style="list-style-type: none"> <li>▪ Steel: coil-coated, double coat on the outside (polyester based 25 µm)</li> <li>▪ Special equipment:               <ul style="list-style-type: none"> <li>- additionally prime coated in trend colour or RAL of your choice.</li> <li>- Pearl-effect, fluorescent and metallic colours are only possible after individual clarification.</li> </ul> </li> </ul>						
<b>Handing</b>	▪ Behind the soffit	<b>Drive</b>	<ul style="list-style-type: none"> <li>▪ Microprocessor-controlled drive, rail-guided, 230 V, 50 Hz</li> <li>▪ Control: impulse control with self-programming</li> <li>▪ of the force limiter, soft start and stop</li> <li>▪ Digital remote control, extendable with other control units</li> </ul>						
<b>Door leaf</b>	Door leaf made of individual double-skinned door sections including central seal with the same partitioning, galvanized sheet steel, building depth of the sections 40 mm. Insulation: polyurethane foam core finger pinch protection inside and outside in accordance with DIN EN 12604 <ul style="list-style-type: none"> <li>▪ ribbed</li> <li>▪ cassette</li> <li>▪ unribbed</li> <li>▪ centre ribbed</li> </ul>	<b>Glazing</b>	<ul style="list-style-type: none"> <li>▪ Glazing for panelled, ribbed, centre ribbed, unribbed door (white polyurethane frame with wooden structure) in various versions (see dealer price list).</li> <li>- Glazed strip or aluminium profiles, anodized, across the entire width of the door (separate section),</li> <li>- Type crossbar, Type multiple mullion, Type rhombus-shaped, Type Rectangular 1 or 3, 1/2 square. (white polyurethane frame with smooth surface)</li> <li>- Stainless steel round glazing Ø 305 mm. One pane of ESG glazing colourless and clear. Stainless steel filling plates.</li> <li>▪ plastic double glazing 20 mm clear or crystal structure or satin on the inside.</li> <li>▪ Other colours or powder coating in accordance with RAL possible.</li> </ul>						
<b>Surface</b>	<ul style="list-style-type: none"> <li>▪ Inside stucco design, Grey white similar to RAL 9002</li> <li>▪ Outer surface woodgrain design, stucco design, smooth or micro-profiled, Traffic white similar to RAL 9016</li> <li>▪ Bottom door edge: Frost-proof and rot-proof EPDM floor seal</li> </ul>								
<b>Fittings</b>	<ul style="list-style-type: none"> <li>▪ Standard version:               <ul style="list-style-type: none"> <li>- Without manual locking mechanism</li> <li>- Prepared for emergency release (required if there is no other entry to the garage)</li> </ul> </li> <li>▪ Special version:               <ul style="list-style-type: none"> <li>- with manual locking mechanism (up to door width of 5000 mm)</li> </ul> </li> </ul>								
<b>Wicket door</b>	Enclosed in aluminium profiles E6/EV1 (the wicket door is always located in the middle) <ul style="list-style-type: none"> <li>▪ with low threshold 48 mm, and full floor seal</li> <li>▪ The wicket door has a standard clearance width of 856 mm</li> <li>▪ All wicket doors include a top door closer</li> <li>▪ a profile cylinder pre-equipped lock with profile cylinder and aluminium handle set in E6/EV1</li> </ul>								
<b>Frame</b>	Profile frame made of sendzimir galvanized sheet steel, coil-coated with polyester, prime coated Traffic white similar to RAL 9016. optionally in trend and RAL colour at additional charge. EPDM strip with sealing lip at the sides. Header trim default in trend colour, RAL colour or similar to wood design.								

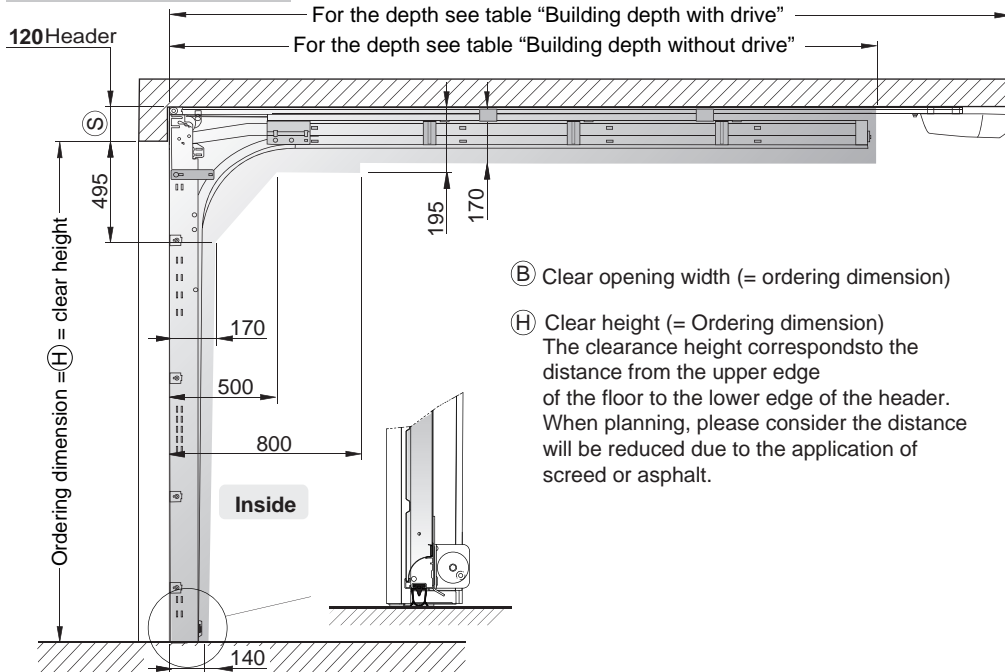
# CarTeck Sectional door GSW 40-L

Double-skinned steel door panels 40 mm  
optionally with glazing, optionally with wicket door

## 120 mm Headroom

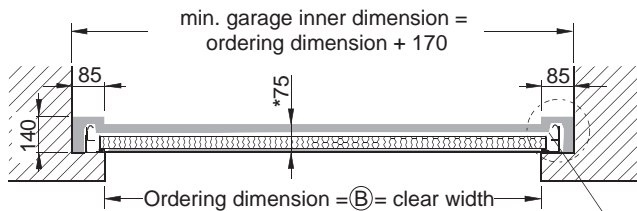
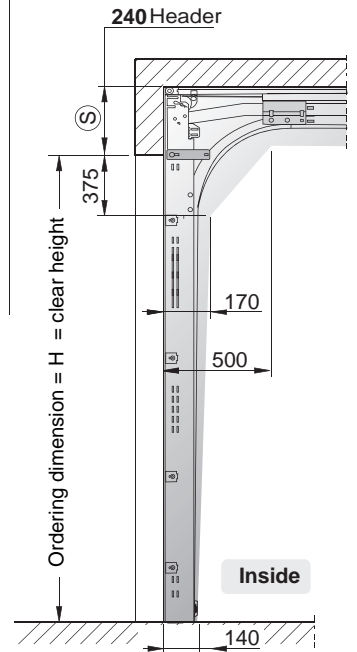
Standard with drive

Dimensions for 145 mm and 265 mm header versions on request

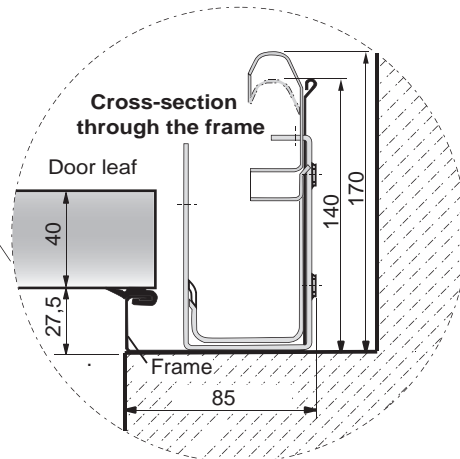
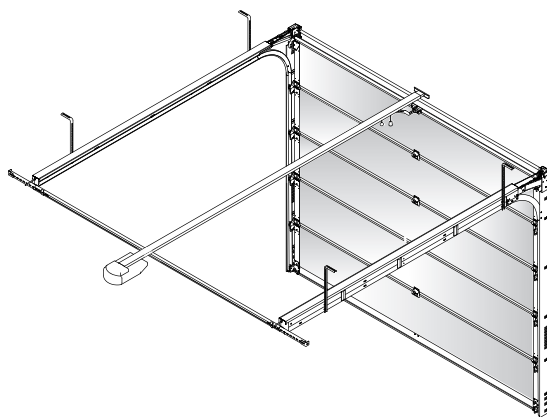


## 240 mm Headroom

Standard for manual operation



\* 240 mm Headroom = 150 mm in the round handle set (middle)



Please observe the following measurement details, to guarantee exact assembly and precise and reliable operation of the CarTeck sectional door.

Version:	Required <sup>S</sup> headroom:	Clear opening height:
with drive	120 mm	completely free <b>Standard version</b>
Manual operation	240 mm	- 25 mm <b>Standard version</b>
Manual operation	120 mm	- 150 mm <b>Special version</b>
Manual operation	120 mm	- 80 mm <b>Special version</b> with doorstopper (see acc. GSW doors)
with drive	240 mm	completely free <b>Special version</b> with pack - 125 mm extended top roller retainers (see acc. GSW doors)

The required headroom increases by + 25 mm for doors with reinforced roller retainers. Manual operation max door width 5000 mm.