



Highly flame-resistant steel trap door / door

EI₂ 60-1 / E 120-1

thin rebated, optionally with glazing

Text example:

EI₂ 60-1 fire-proof steel door tested as per EN 1634-1 (DIN 4102). Single-leaf door element, can be used right/left handed. Door leaf 62 mm thick, rebated on 3 sides, with seal. Corner frame 1.5 mm thick with 3-sided seal. Leaf and frame galvanized and prime coated in Grey white, similar to RAL 9002. Mortice lock with latch lever as per DIN 18250, prepared for profile cylinder. Black plastic handle set, handle pivoted on bearing, with tumbler insert (Bb) and 1 Bb key. 1 spring hinge, 1 KO-hinge with ball bearing, 2 security bolts. "Teckentrup 62" or equivalent.

Compile and tender according to requirements. Please refer to technical data below for respective details. Updated 1. March 2018.

Technical data

Also available in **STAINLESS STEEL**

Building authority approval:	CF 672 tested as per DIN 4102 (EN1634-1) for installation in internal walls. Heat transfer coefficient as per EN ISO 12567-1 (without glazing) sheet 1,0 mm: $U_D = 1,3 \text{ W/m}^2\text{K}$														
Installation in	<table border="0"> <tr> <td>Masonry wall</td> <td>min. 115 mm</td> </tr> <tr> <td>▪ Concrete wall</td> <td>min. 100 mm</td> </tr> <tr> <td>▪ Lightweight construction stud wall</td> <td>min. 100 mm</td> </tr> <tr> <td>▪ Autoclaved aerated concrete wall</td> <td></td> </tr> <tr> <td>- as per DIN 4165</td> <td>min. 150 mm</td> </tr> <tr> <td>- reinforced type</td> <td>min. 150 mm</td> </tr> <tr> <td>▪ covered wood beams</td> <td>F 90</td> </tr> </table> <p>* F 90 as per DIN 4102-4 or in accordance with general building authority test certificate. For permissible walls refer to the installation detail tab.</p>	Masonry wall	min. 115 mm	▪ Concrete wall	min. 100 mm	▪ Lightweight construction stud wall	min. 100 mm	▪ Autoclaved aerated concrete wall		- as per DIN 4165	min. 150 mm	- reinforced type	min. 150 mm	▪ covered wood beams	F 90
Masonry wall	min. 115 mm														
▪ Concrete wall	min. 100 mm														
▪ Lightweight construction stud wall	min. 100 mm														
▪ Autoclaved aerated concrete wall															
- as per DIN 4165	min. 150 mm														
- reinforced type	min. 150 mm														
▪ covered wood beams	F 90														
Approved dimensions	<table border="0"> <tr> <td>Modular dimension</td> <td>W 625 - 1500 mm</td> </tr> <tr> <td>max. 5,4 sqm</td> <td>H 500 - 3450 mm</td> </tr> </table>	Modular dimension	W 625 - 1500 mm	max. 5,4 sqm	H 500 - 3450 mm										
Modular dimension	W 625 - 1500 mm														
max. 5,4 sqm	H 500 - 3450 mm														
Handing	DIN right or DIN left														
Door (trap door) leaf	<ul style="list-style-type: none"> ▪ double skinned, thin rebated ▪ trap door 4-sided ▪ Door rebated on three sides ▪ Door leaf thickness: 62 mm ▪ Sheet thickness: 1,0 mm ▪ Security bolt: 2 														
Frame	<p>Corner frame 1,5 mm thick, trap door with 4-sided, door with 3-sided seal. Frame fastening by exposed masonry mounting.</p> <p>Special equipment:</p> <ul style="list-style-type: none"> ▪ block-, counter- or closed frame ▪ with floor recess 														
Floor seals	<ul style="list-style-type: none"> ▪ Retractable floor seal ▪ sliding threshold seal ▪ Buffer strip and seal <p>Floor seal retrofittable</p>														
Surface	Door leaf/Frame galvanized and prime coated, similar to RAL 9002 (Grey white)														
Hinges and closing devices	<ul style="list-style-type: none"> ▪ 1 spring hinge 1 KO-hinge with ball bearing or ▪ 2 KO-hinges with ball bearings and 1 top door closer ▪ Compensation rings for height adjustment 														
Fittings	<ul style="list-style-type: none"> ▪ Mortice lock with latch lever DIN EN 18250 ▪ Black plastic handle set, handle pivoted on bearing with tumbler insert (Bb) and 1 Bb-key 														

Glazing	Fire-resistant glass F 60. Max. pane size (w x h) 445 x 745 mm. Round glazing Ø 300, Ø 400 and Ø 500. Steel glass holding strip, galvanized and prime coated in Grey white, similar to RAL 9002.
Special equipment	<ul style="list-style-type: none"> ▪ Handle sets / Lever/Knob sets: <ul style="list-style-type: none"> - plastic - light metal - stainless steel - with short plate or rose escutcheon (various makes) ▪ prepared for rose escutcheon ▪ locks <ul style="list-style-type: none"> profile cylinder 40,5 + 40,5 mm - panic locks block lock (must be provided) top door closer DIN EN 1154 <ul style="list-style-type: none"> - head assembly - with slide rail - with locking device - with smoke detector - ITS 96 (hidden) ▪ doors with glazing with top door closer ▪ Electric door opener ▪ Integrated lock inspector (bolt contact) ▪ Integrated opening indicator (Reed contact) ▪ Revolving door drives ▪ Hold-open devices ▪ Floor seals are retrofittable

	Ordering dimensions / (modular dimensions) Width x height	Clear passage size (corner frame) width x height
Standard sizes steel trap door	750 x 875	666 x 791
	875 x 875	791 x 791
	1000	916
	1250	1166
	1000 x 1000	916 x 916
Standard sizes steel door	1250	1166
	1250 x 1250	1166 x 1166
	750 x 2000	666 x 1958
	2125	2083
	875 x 2000	791 x 1958
	2125	2083
	1000 x 2000	916 x 1958
	2125	2083
	1125 x 2000	1041 x 1958
	2125	2083
	1250 x 2000	1166 x 1958
2125	2083	
2250	2208	

(Special sizes: from 625 x 1750 to 1500 x 3450)

Further Qualifications
(Special equipment):



Smoke proof in accordance to 1634-3/DIN 18095 with top door closer



Sound insulated in acc. with DIN EN 20140/717 Part 1
RW 33dB with retractable floor seal
RW 33dB with bottom buffer and seal
RW 33dB with sliding threshold seal



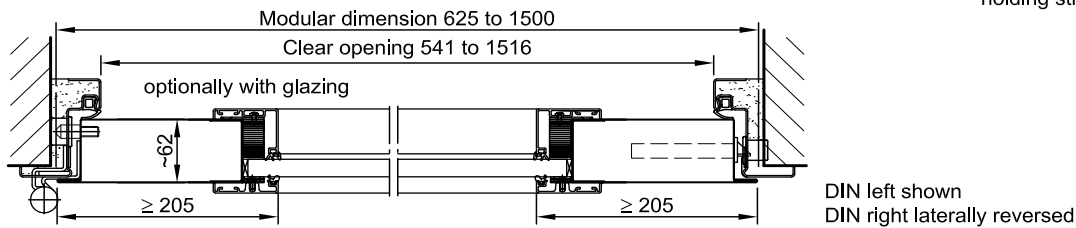
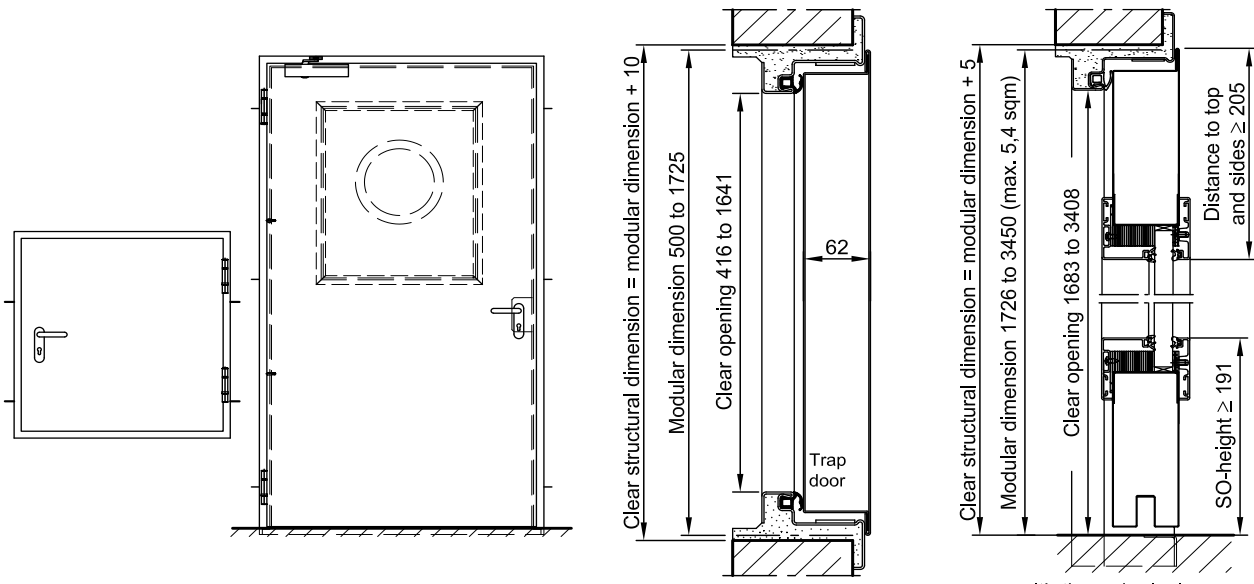
Burglar resistant in accordance with DIN EN 1627 - RC 2



Highly flame-resistant steel trap door / door

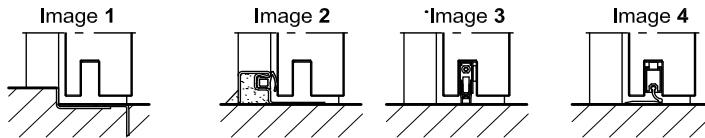
EI₂ 60-1 / E 120-1

thin rebated, optionally with glazing



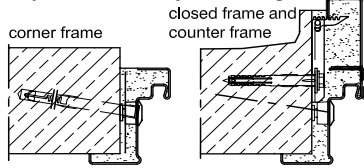
Floor connections:

- Image 1: With bottom buffer
- Image 2: With bottom buffer/seal
- Image 3: With bottom seal (smoke-proof door with top door closer)
- Image 4: sliding threshold seal

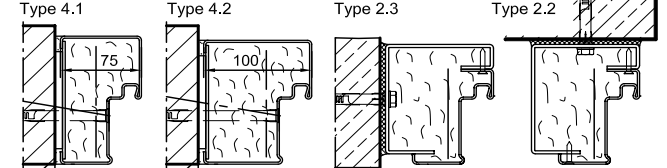


Installation in masonry/ concrete walls
concrete walls ≥ 100 mm
masonry walls ≥ 115 mm

exposed masonry mounting

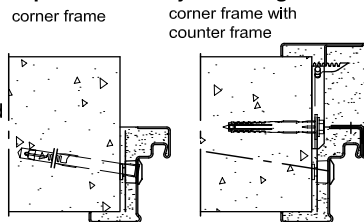


Flush Installation

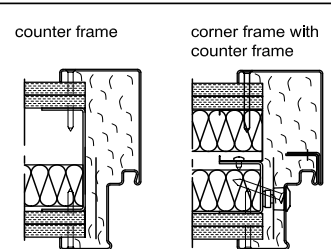


Installation in autoclaved aerated concrete walls
(doors with top door closer)
Made of autoclaved aerated concrete blocks or made of reinforced autoclaved aerated concrete slabs.
Wall thickness min. 115 mm.

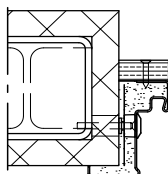
exposed masonry mounting



Installation in lightweight construction stud walls (doors with top door closer)
Installation walls ≥ F90 wall thickness 100 mm. For permissible walls refer to the installation details tab



Installation on concealed steel supports
F90



Please find a detailed installation overview in the planning-, installation- and maintenance manual for 1-leaf and 2-leaf doors.