



Highly flame-resistant steel door

EI₂ 60-2 / E 120-2

thin rebated, optionally with glazing

Text example:

EI₂ 60-2 fire-proof steel door tested as per EN 1634-1 (DIN 4102). Double-leaf door element. Type of handing DIN right. Flush mounted door leaf without hinge stamping. Door leaf 62 mm thick, rebated on 3 sides. Corner frame 1.5 mm thick with 3-sided seal. Door leaf and frame galvanized and prime coated in Grey white, similar to RAL 9002. Active door leaf with mortice lock with latch lever, prepared for profile cylinder as per DIN 18250. FS-round handle set black (plastic), handle pivoted on bearing, with tumbler insert (Bb) and 1 Bb-key. Inactive door leaf with espagnolette bolt lock and standard top locking. 4 KO-hinges with ball bearings, top door closer as per DIN EN 1154, 1 door selector. 2-3 security bolts per leaf. "Teckentrup 62" or equivalent.

Compile and tender according to requirements. Please refer to technical data below for respective details. Updated 1. March 2018

Technical data

Also available in **STAINLESS STEEL**

Building authority approval	CF 672 tested as per DIN 4102 (EN1634-1) for installation in internal walls. Heat transfer coefficient as per EN ISO 12567-1 (without glazing) sheet 1,0 mm: $U_D = 1,4 \text{ W/m}^2\text{K}$														
Installation in	<table border="0"> <tr> <td>Masonry wall</td> <td>min. 115 mm</td> </tr> <tr> <td>▪ Concrete wall</td> <td>min. 100 mm</td> </tr> <tr> <td>▪ Lightweight construction stud wall</td> <td>min. 100 mm</td> </tr> <tr> <td>▪ Autoclaved aerated concrete wall</td> <td></td> </tr> <tr> <td>- as per DIN 4165</td> <td>min. 150 mm</td> </tr> <tr> <td>- reinforced type</td> <td>min. 150 mm</td> </tr> <tr> <td>▪ covered wood beams</td> <td>F 90</td> </tr> </table> <p>* F 90 as per DIN 4102-4 or in accordance with general building authority test certificate. For permissible walls refer to the installation detail tab.</p>	Masonry wall	min. 115 mm	▪ Concrete wall	min. 100 mm	▪ Lightweight construction stud wall	min. 100 mm	▪ Autoclaved aerated concrete wall		- as per DIN 4165	min. 150 mm	- reinforced type	min. 150 mm	▪ covered wood beams	F 90
Masonry wall	min. 115 mm														
▪ Concrete wall	min. 100 mm														
▪ Lightweight construction stud wall	min. 100 mm														
▪ Autoclaved aerated concrete wall															
- as per DIN 4165	min. 150 mm														
- reinforced type	min. 150 mm														
▪ covered wood beams	F 90														
Approved dimensions	<table border="0"> <tr> <td>Modular dimension:</td> <td>1375 - 3000 mm</td> </tr> <tr> <td>max. 10,8 sqm</td> <td>1750 - 3450 mm</td> </tr> </table>	Modular dimension:	1375 - 3000 mm	max. 10,8 sqm	1750 - 3450 mm										
Modular dimension:	1375 - 3000 mm														
max. 10,8 sqm	1750 - 3450 mm														
Handing	DIN right or DIN left														
Door leaf	<table border="0"> <tr> <td>Double-skinned, on 3 sides</td> <td>thin rebated</td> </tr> <tr> <td>Door leaf thickness:</td> <td>62 mm</td> </tr> <tr> <td>Sheet thickness:</td> <td>1,0 mm</td> </tr> <tr> <td>Security bolts per leaf:</td> <td>per leaf 2 - 3</td> </tr> </table>	Double-skinned, on 3 sides	thin rebated	Door leaf thickness:	62 mm	Sheet thickness:	1,0 mm	Security bolts per leaf:	per leaf 2 - 3						
Double-skinned, on 3 sides	thin rebated														
Door leaf thickness:	62 mm														
Sheet thickness:	1,0 mm														
Security bolts per leaf:	per leaf 2 - 3														
Frame	<p>Corner frame 1,5 mm thick, with 3-sided seal. Frame fastening by exposed masonry mounting. Special equipment:</p> <ul style="list-style-type: none"> ▪ block-, counter- or closed frame with floor recess. 														
Floor seals	<ul style="list-style-type: none"> ▪ Retractable floor sea ▪ sliding threshold seal ▪ Buffer strip and seal <p>Floor seal retrofittabl .</p>														
Surface	Door leaf/Frame galvanized and prime coated, similar to RAL 9002 (Grey white)														
Hinges closing devices	<ul style="list-style-type: none"> ▪ 4 KO hinges with ball bearings ▪ top door closers ▪ 1 door selector ▪ Ausgleichsringe zur Höhenregulierung 														
Fittings	<p>Active door leaf:</p> <ul style="list-style-type: none"> ▪ Mortice lock with latch lever, prepared for profile cylinder in accordance with DIN 18250 ▪ FS round handle set, black (plastic). Handle pivoted on bearing, with tumbler insert (Bb) and 1 Bb key. <p>Inactive door leaf:</p> <ul style="list-style-type: none"> ▪ Inactive leaf with espagnolette bolt with standard top locking. 														

Glazing	<p>Fire-resistant glass F 60. Max. pane size (w x h) 445 x 745 mm. Round glazing Ø 300, Ø 400 and Ø 500. Steel glass holding strip, galvanized and prime coated in Grey white, similar to RAL 9002.</p>
----------------	---

Special equipment	<ul style="list-style-type: none"> ▪ Handle sets\Lever\Knob sets: <ul style="list-style-type: none"> - plastic - light metal - stainless steel - with short plate or rose escutcheon (various makes) ▪ Prepared for rose escutcheon ▪ Locks <ul style="list-style-type: none"> - profile cylinder 40,5 + 40, mm - panic locks - block lock (must be provided) ▪ Top door closer DIN EN 1154 <ul style="list-style-type: none"> - head assembly - with slide rail - with locking device - with smoke detector - ITS 96 (hidden) ▪ Panic locks ▪ Secured drive lock ▪ Electric door opener ▪ Integrated lock inspector (bolt contact) ▪ Integrated opening indicator (Reed contact) ▪ Revolving door drives ▪ Hold-open devices ▪ Central rebate seal
--------------------------	--

	Ordering dimensions (mod. dimensions) width x height	Clear passage size (corner frame) width x height
Standard sizes	1500 x 2000	1416 x 1958
	2125	2083
	1750 x 2000	1666 x 1958
	2125	2083
	2000 x 2000	1916 x 1958
	2125	2083
	2500	2458
	2125 x 2125	2041 x 2083
	2250 x 2250	2166 x 2208
	2500 x 2500	2416 x 2458

(Special sizes: from 1375 x 1750 to 2500 x 3450)

Further Qualifications
(Special equipment):



Smoke proof in accordance to 1634-3/DIN 18095 with top door closer



Sound insulated in acc. with DIN EN 20140/717 Part 1
RW 33dB mit Bodendichtung absenkbar
RW 33dB mit Anschlagschiene und Dichtung
RW 33dB mit Schleifdichtung



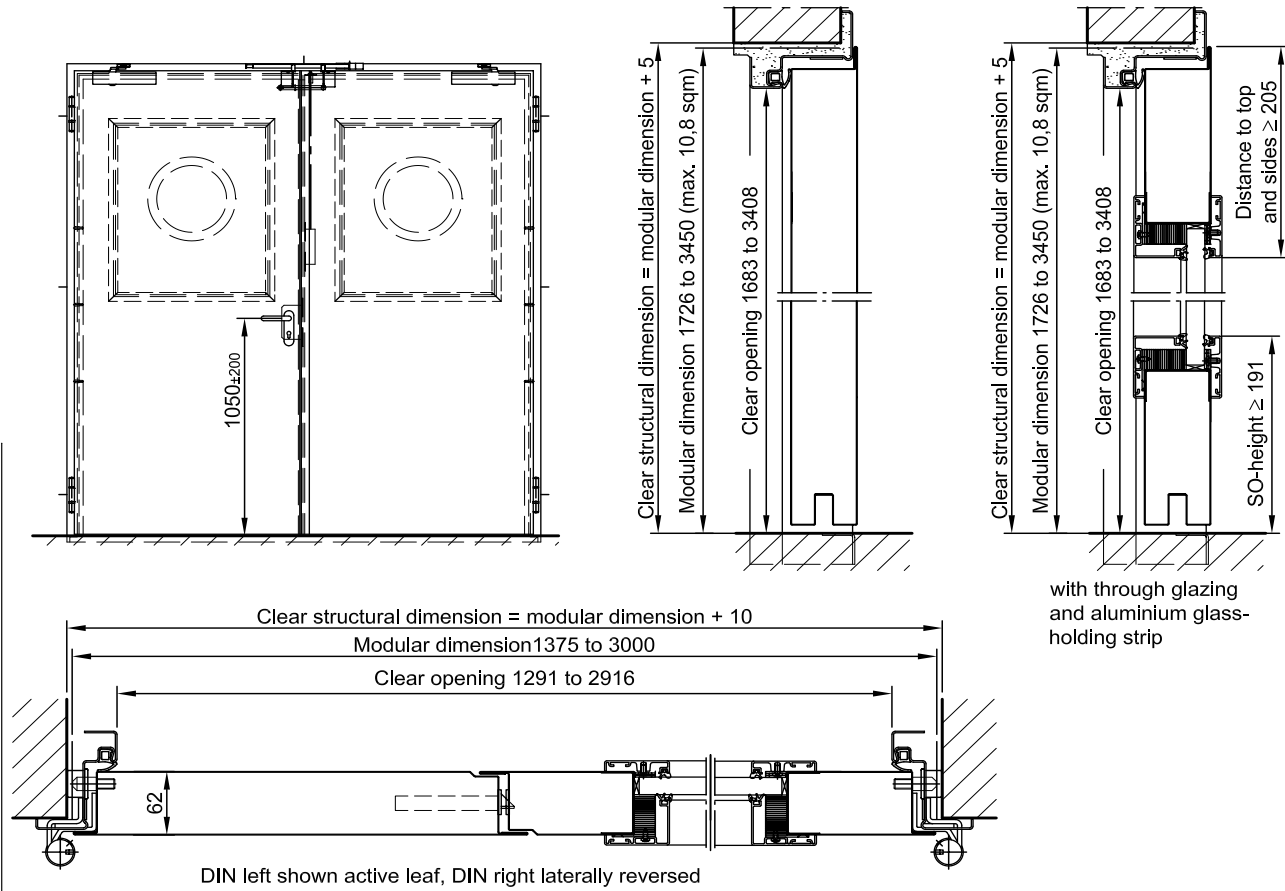
Burglar resistant in accordance with DIN EN 1627 - RC 2



Highly flame-resistant steel door

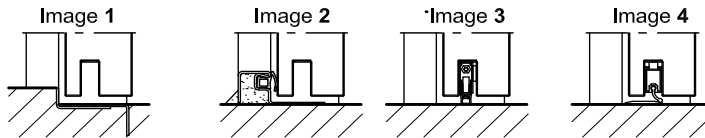
EI₂ 60-2 / E 120-2

thin rebated, optionally with glazing



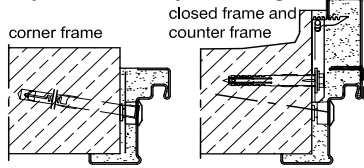
Floor connections:

- Image 1: With bottom buffer
- Image 2: With bottom buffer/seal
- Image 3: With bottom seal (smoke-proof door with top door closer)
- Image 4: sliding threshold seal

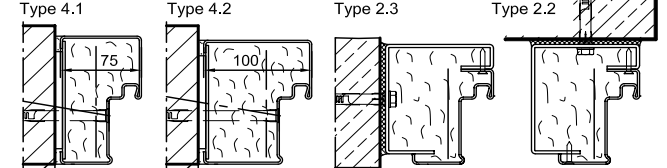


Installation in masonry/ concrete walls
concrete walls ≥ 100 mm
masonry walls ≥ 115 mm

exposed masonry mounting

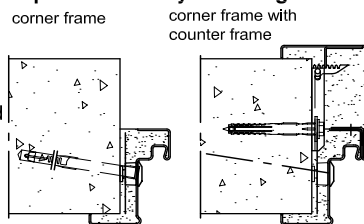


Flush Installation

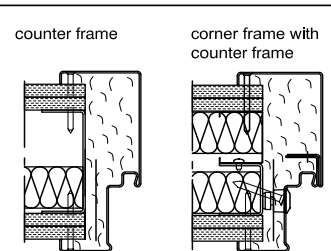


Installation in autoclaved aerated concrete walls
(doors with top door closer)
Made of autoclaved aerated concrete blocks or made of reinforced autoclaved aerated concrete slabs.
Wall thickness min. 115 mm.

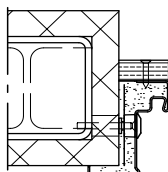
exposed masonry mounting



Installation in lightweight construction stud walls (doors with top door closer) Installation walls ≥ F90 wall thickness 100 mm. For permissible walls refer to the installation details tab



Installation on concealed steel supports
F90



Please find a detailed installation overview in the planning-, installation- and maintenance manual for 1-leaf and 2-leaf doors.