



Fire-resistant steel door T 30-2-FSA „Teckentrup 72 ST“

Door flush edged, optionally with glazing

Text example:

T 30-2-FSA fire-proof steel door tested as per EN 1634-1. Double leaves door element.. Flush styling door leaf, 72 mm thick, flush edged. Handling type DIN right. corner frame 1.5 mm thick with 3-sided seal, without floor recess. Door leaf and frame galv. and prime coated, grey white similar RAL 9002. Active leaf mortise lock with latch lever PC perforated. FP round handle set black (plastic), handle pivoted on bearing with tumbler (Bb) insert and 1 Bb-key. Inactive leaf: espagnolette bolt lock with standard top locking. Per leaf, two 3D- hinges and 1 top door closer with slide rail in acc. with DIN EN 1154. 1 door selector. „Teckentrup“ or equivalent.

(Compile and tender according to requirements. Please refer to technical data below for respective details. Updated 01.06.2023)

Technical data

Building authority approval	Z-6.20-1923 tested acc. EN 1634-1 (DIN 4102) for installation in internal walls
Installation in	<ul style="list-style-type: none"> ▪ masonry min. 115 mm ▪ concrete min. 100 mm ▪ lightweight construction stud wall * min. 100 mm • autoclaved aerated <ul style="list-style-type: none"> - concrete stones min. 115 mm - reinforced type min. 115 mm ▪ covered steel- and wood beams F60 <p>* assembly walls ≥ F 30 in acc. with general building authority test certificate. For permissible walls refer to the installation details</p>
Approved dimensions	Modular dim. W 1375 - 2500 mm H 1750 - 2500 mm
Type of handling	DIN right or DIN left
Door leaf (double skinned)	Rebate type: flush edged Door leaf thickness: 72 mm Sheet thickness: 1.0 mm Security bolt: per leaf min. 1
Frame	Corner frame 1.5 mm thick with 3-sided seal, without floor recess. astening by exposed masonry mounting. Special equipment: Block frame and counter frame or closed frame / Frame with floor recess.
Floor closure	<ul style="list-style-type: none"> ▪ retractable bottom seal retractable bottom seal
Surface	Door leaf/Frame galv. and prime coated, grey white ähnlich RAL 9002 Special equipment: <ul style="list-style-type: none"> ▪ RAL of choicel
Hinges and closing device	<ul style="list-style-type: none"> ▪ Per leaf 2 3D-hinges ▪ 2 overhead door closers with guide rail and integrated closing sequence control
Fitting	Active leaf: <ul style="list-style-type: none"> ▪ Mortise lock with latch function PC-perforated ▪ FP-round handle set, black (plastic). Handle pivoted on bearing with tumbler (Bb) insert and 1 Bb-key Inactive leaf: <ul style="list-style-type: none"> ▪ Espagnolette bolt with standard top locking

Glazing	Fire protection glass clear F30 type 1-0, glazing field angular with steel glazing beads. Max. glass dim. 1162 x 1912 mm. Round glazing (Ø 300, 400 und 500) with glass holding strips made of stainless steel Special equipment: <ul style="list-style-type: none"> ▪ angular glazing-alu-glass pane holding strips in stainless steel optic / ▪ angular- glass holding strips made of stainless steel
Special equipment	<ul style="list-style-type: none"> ▪ Handle sets / Lever/Knob sets: <ul style="list-style-type: none"> - plastic - light metal - stainless steel - with short plate or rose escutcheon (various makes) ▪ prepared for rose escutcheon ▪ Panic- / lock bar ▪ locks <ul style="list-style-type: none"> - Panic locks - Block lock (must be provided) ▪ Profile cylinder 40 + 55 mm ▪ Top door closer DIN EN 1154 <ul style="list-style-type: none"> - inge-/opposite hinge side - with slide rail - with hold open device - with smoke detector - ITS 96 (hidden) ▪ Electrical door opener ▪ Lock control (bolt contact) integrated ▪ Opening detector (reed contact) integrated ▪ Swing door operator ▪ Hold-open device

Standard sizes	Ordering dimensions / Modular dimension width x height	Clear passage sizes (corner frame) width x height
	1500 x 2000	1416 x 1958
	2125	2083
	1750 x 2000	1666 x 1958
	2125	2083
	2000 x 2000	1916 x 1958
	2125	2083
	2125 x 2125	2041 x 2083
	2500 x 2500	2416 x 2458

(Special sizes: from 1375 x 1750 mm to 2500 x 2500 mm)

Further qualifications
(special equipment):



Smoke proof in acc.with EN 1634-3/ DIN 18095 for solid walls and lightweight construction stud walls



Sound insulated in acc. with DIN EN 20140/717 Part 1 up to **RW 35 dB** with retractable bottom seal

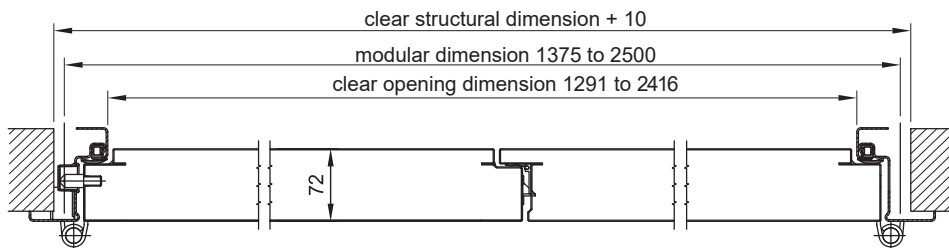
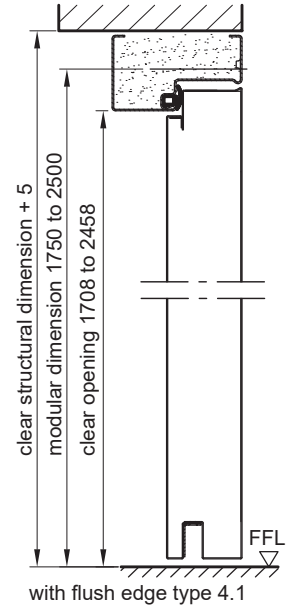
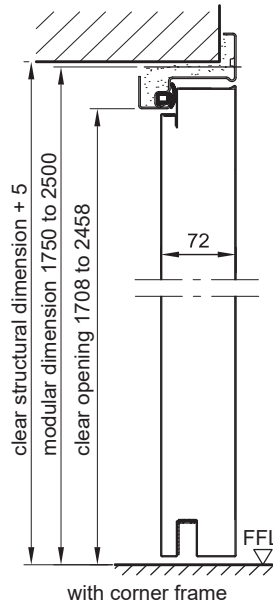
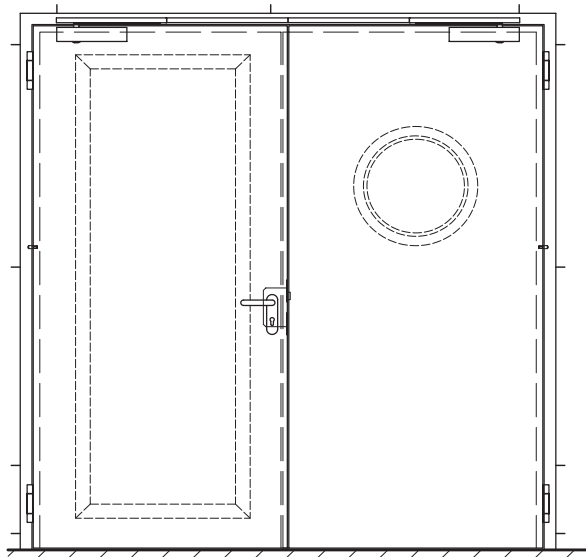


Burglar resistant in acc. to DIN EN 1627 - **RC 2**



Fire-resistant steel door T 30-2-FSA „Teckentrup 72 ST“

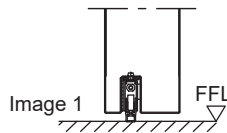
Door flush edged, optionally with glazing



Active leaf DIN left shown
DIN right laterally reversed

Floor connections

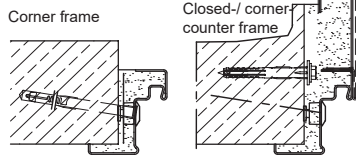
Image 1: with retractable bottom seal



Installation in masonry-/concrete walls

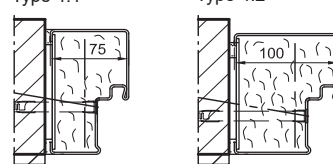
concrete walls ≥ 100 mm
masonry walls ≥ 115 mm

Exposed masonry mounting



Flush edge installation

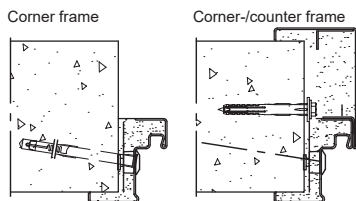
Type 4.1 Type 4.2



Installation in autoclaved aerated concrete walls

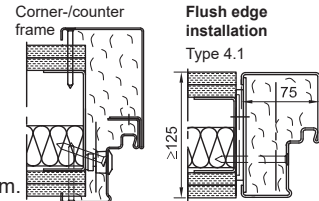
Made of auto. aerated concrete blocks or reinforced auto.aerated concrete thickness min. 115 mm.

Exposed masonry mounting

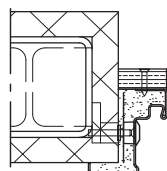


Fitting in assembly walls

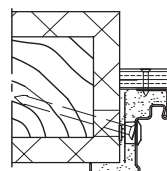
(as quick fit frame) (doors with TDC) assembly walls F30 in acc. with DIN 4102 Part 4 or in acc. with general building authority test certificate. Wall thickn. min. 100 mm.



Installation in clad steel structure F60



Installation in clad wooden structure F60



Please find a detailed installation overview in the planning-, installation- and maintenance manual for 1-leaf and 2-leaf doors.