



Highly flame-resistant steel door

EI₂60-C5-S_a „Teckentrup 62“ 2lf. door

Classification Fire-resistant closure as outside door with CE-labelling (acc. to EN 16034 / 14351-1)

Text example:

EI₂60-2-C5-S_a, Classification Fire protection closure (acc. EN 16034 / 14351-1). Double leaf door element. Type of handling DIN right. Flush edged door leaf 62 mm thick with thin rebate, 3-sided rebated. Corner frame 1.5 mm thick with 3-sided seal, without floor recess. Door leaf and frame galvanised and prime coated, grey white similar RAL 9002. Active leaf mortise lock with latch function PC-perforated. FP-round handle set, black (plastic). Handle pivoted on bearing with tumbler (Bb) insert and 1 Bb key. Inactive leaf with espagnolette bolt lock with standard top locking. 2 CO hinges with ball bearing and 1 top door closer per leaf. acc. EN 1154. 1 door selector. „Teckentrup 62“ or equivalent. (compile and tender according to requirements. Please refer to technical data below for respective details. Update 01.06.2023)

Technical data

Classification	EI ₂ 60-C5-S _a , Classification fire resistant closure as outside door with CE-labelling (acc. EN 16034 / 14351-1)		Glazing	Fire resistant glass, clear, rectangular glazing with aluminium glass holding strips. Max. panes 741 x 1658 mm. Special equipment: <ul style="list-style-type: none"> Rectangular glazing-aluminium-glass holding strips in stainless steel design Rectangular glazing, glass holding strips in stainless steel Round glazing-glass holding strips made of galvanised steel and prime coated or V2A 	
Driving rain impermeability	Retractable bottom seal: Class 2A opening outwards with buffer strip and seal: Class 6A opening outwards		Special equipment	<ul style="list-style-type: none"> Handle sets / Lever/Knob set: - Plastic - light metal - stainless steel - with short plate or rose escutcheon (various makes) Prepared for rose escutcheon Panic / bar handle Locks - Panic locks - secured espagnolette bolt Profile cylinder 40.5 + 40.5 mm Top door closer - hinge-/opposite hinge side - with slide rail - with locking device - with smoke detector Electrical door opener Integrated lock inspector (bolt contact) Integrated opening indicator (reed contact) Revolving door drives Hold open device 3D-hinges 	
Heat insulation (without glazing)	Sheet thickness 1.0 mm: in conjunction with bottom floor closure	U _D = 1,4 W/m ² K			
Air permeability	Retractable bottom seal	Class 2			
Differential climate behaviour	climate class	2(d) / 2(e)			
Installation in	<ul style="list-style-type: none"> Masonry min. 115 mm Concrete min. 115 mm Aerated concrete - aerated concrete stones min. 150 mm - reinforced aerated concrete min. 150 mm 				
Approved dimensions	Modular dimension	W 1375 - 2500 mm H 1750 - 2500 mm			
Type of handling	DIN right or DIN left				
Door leaf	Double skinned: Door : Door leaf thickness: sheet thickness: Security bolt :	thin rebate 3-sided rebated 62 mm 1.0 mm per leaf min. 2			
Frame	<ul style="list-style-type: none"> Corner frame 1.5/2.0 mm thick, with 3-sided seal without floor recess Fastening by exposed masonry mounting. Special equipment: Block-, counter- or closed frame Frame with floor recess fitted 				
Floor closures	<ul style="list-style-type: none"> Retractable bottom seal Sliding threshold seal Buffer strip and seal Floor seal retrofittable. 				
Surface	Door leaf and frame galvanised and prime coated, Grey white similar RAL 9002 Special equipment: RAL of choice				
Hinges and closing device	<ul style="list-style-type: none"> 2 CO hinges with ball bearing 2 Top door closer 1 door selector 				
Fittings	Active leaf: <ul style="list-style-type: none"> Mortise lock with latch function PC-perforated FP-round handle set, black (plastic) Handle pivoted on bearing with tumbler (Bb) insert and 1 Bb key Inactive leaf : <ul style="list-style-type: none"> Espagnolette bolt lock with standard top locking 				
	Standard sizes	Ordering dimensions / modular dimensions width x height	Clear passage sizes (corner frame) width x height		
		1500 x 2000 2125	1416 x 1958 2083		
		1750 x 2000 2125	1666 x 1958 2083		
		2000 x 2000 2125 2500	1916 x 1958 2083 2458		
		2125 x 2125 2250 x 2250 2500 x 2500	2041 x 2083 2166 x 2208 2416 x 2458		

(Special sizes: from 1375 x 1750 mm to 2500 x 2500 mm)

Further qualifications
(Special versions):



Smoke proof acc EN 1634-3 with TDC, for solid walls



Sound insulated acc. EN 20140/717 part 1 up to RW 33dB depending on door structure and bottom seal



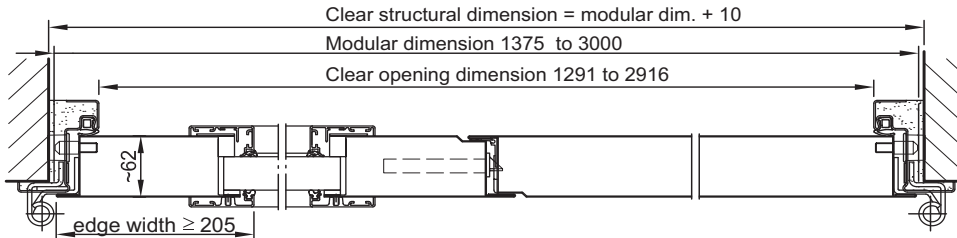
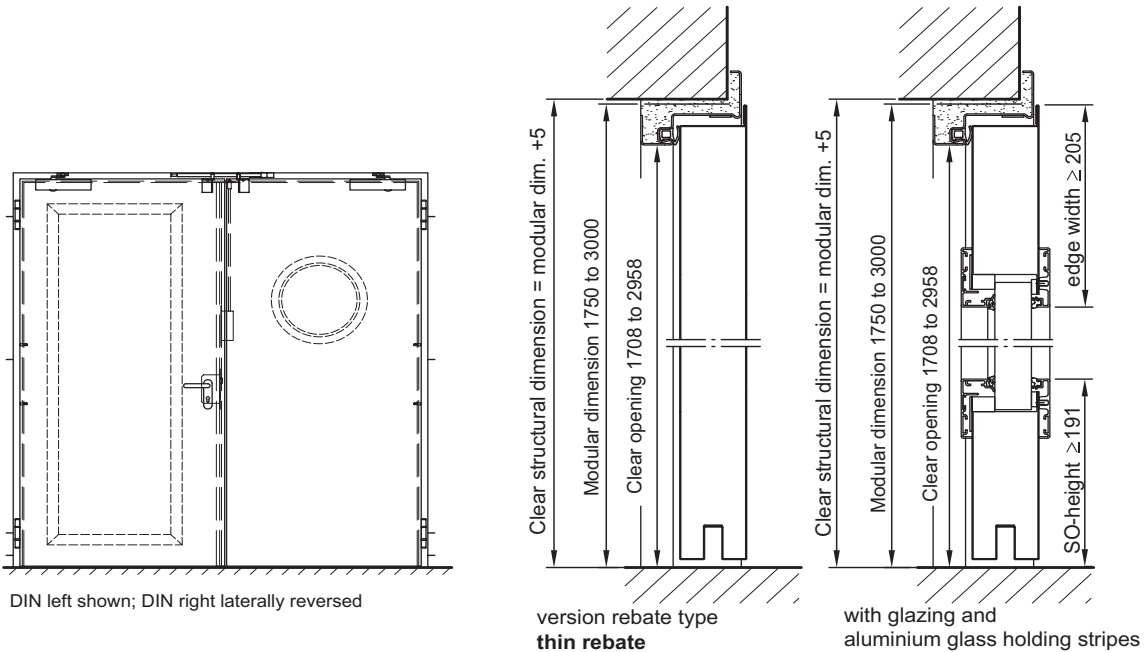
Burglar resistant acc. EN 1627-RC 2, RC 3



Highly flame-resistant steel door

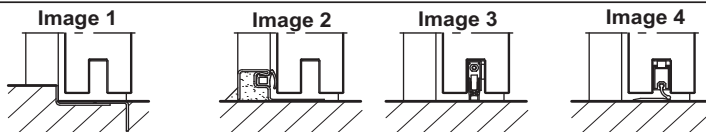
EI₂60-C5-S_a „Teckentrup 62“ 2lf. door

Classification Fire-resistant closure as outside door with CE-labelling (acc. to EN 16034 / 14351-1)



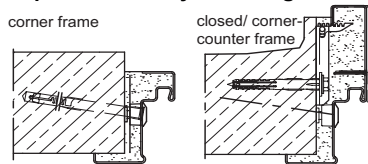
Floor connections:

- Image 1: with bottom buffer
- Image 2: with bottom buffer/seal
- Image 3: with retractable bottom seal
- Image 4: with sliding threshold seal

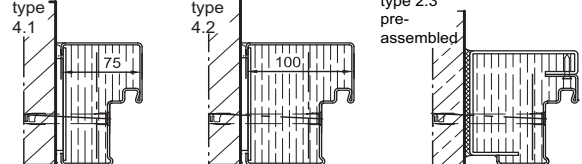


**Installation in masonry/
concrete walls**
wall thickness ≥ 115 mm

Exposed masonry mounting

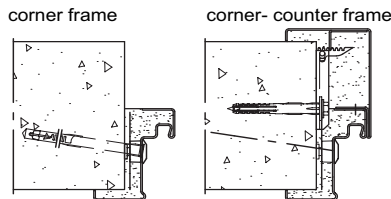


Flush edge installation

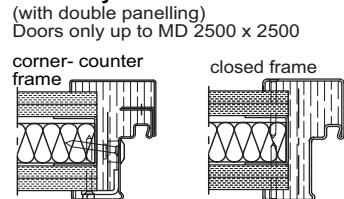


**Installation in aerated
concrete walls**
wall thickness ≥ 150 mm

Exposed masonry mounting



Assembly walls



**Installation in concealed
steel support**

