



## Fire resistant steel door T 30-1-FSA „Teckentrup 62 ST“

flush mounted / optionally with glazing

### Text example:

T 30-1-FSA fire-resistant steel door tested in accordance with EN 1634-1 (DIN 4102). Single leaf door element. Door leaf 62 mm thick, flush mounted. Handing DIN right. Door leaf without hinge stamping. Corner frame 1.5 mm thick with 3-sided seal and bottom sill. Door leaf and frame galvanized and prime-coated in Grey white, similar RAL 9002. Mortice lock with latch lever in accordance with DIN 18250, prepared for profile cylinder. Plastic handle set, black, handle pivoted on bearing with tumbler insert (Bb) and 1 Bb key. 1 security bolt. 3D-hinges. "Teckentrup 62 ST" or equivalent.

(Compile and tender according to requirements. Please refer to technical data below for respective details. Updated 1st March 2018)

### Technical data

<b>Building authority approval</b>	Z-6.20-1923 tested as per DIN 4102 (EN1634-1) for installation in internal walls.	
<b>Installation in</b>	<ul style="list-style-type: none"> <li>▪ Masonry min. 115 mm</li> <li>▪ Concrete min. 100 mm</li> <li>▪ Lightweight construction * stud walls min. 100 mm</li> <li>▪ Autoclaved aerated min. 100 mm               <ul style="list-style-type: none"> <li>- concrete walls min. 115 mm</li> <li>- reinforced type min. 115 mm</li> </ul> </li> <li>▪ covered steel-. wood beams F 60</li> </ul>	
	* F ≥ 30 as per DIN 4102 part 4 or in accordance with the general building authority test certificate. For permissible walls refer to the installation details tab.	
<b>Approved dimensions</b>	Modular dimensions	W 625 – 1250 mm H 1750 – 2500 mm
<b>Handing</b>	DIN right or DIN left	
<b>Door leaf</b>	double skinned, Door leaf thickness: Sheet thickness: Security bolt: Insulation:	<b>flush mounted</b> 62 mm 1,0 min. 1 Mineral fibre board
<b>Frame</b>	1,5 mm thick, with 3-sided seal and floor mounting bracket. Frame fastening by exposed masonry mounting. Special equipment: block-, counter- or closed frame. Models with: block-, counter- or closed frame.	
<b>Floor seals</b>	<ul style="list-style-type: none"> <li>▪ Retractable floor seal</li> <li>▪ sliding threshold seal</li> <li>▪ Buffer strip and seal</li> <li>▪ Floor seal retrofittable</li> </ul>	
<b>Surface</b>	Door leaf and frame galvanized and prime coated, similar to RAL 9002 (Grey white).	
<b>Hinges and closing devices</b>	<ul style="list-style-type: none"> <li>▪ 2 x 3D-hinges</li> <li>▪ 1 top door closer with slide rail</li> </ul>	
<b>Fittings</b>	<ul style="list-style-type: none"> <li>▪ Mortice lock with latch lever DIN 18250</li> <li>▪ Plastic handle set (black)</li> <li>▪ Handle pivoted on bearing with tumbler insert (Bb) and 1 Bb key.</li> </ul>	
<b>Glazing</b>	Fire resistant glass with aluminium glass holding strips. Max. pane size 741 x 1658 mm. Round glazing (stainless steel glass holding strips) Ø 300, Ø 400 and Ø 500	

Also available in **STAINLESS STEEL**

### Special equipment

- Handle sets / lever/knob sets:
  - plastic
  - light metal
  - stainless steel
  - with short plate or rose escutcheon (various makes)
- prepared for rose escutcheon
- locks:
  - Profile cylinder 40,5 + 30,5 mm
  - Panic locks
  - Block lock (mut be provided)
- Top door closer DIN EN 1154
  - head assembly
  - with slide rail
  - with locking device
  - with smoke detector
  - ITS 96 (hidden)
- electric door opener
- Integrated lock inspector (bolt contact)
- Integrated opening indicator (Reed contact)
- Revolving door drives
- Hold-open devices
- Floor seal retrofittable

Further qualifications  
(Special equipment):



Smoke proof in accordance to 1634-3/ DIN 18095 with top door closer



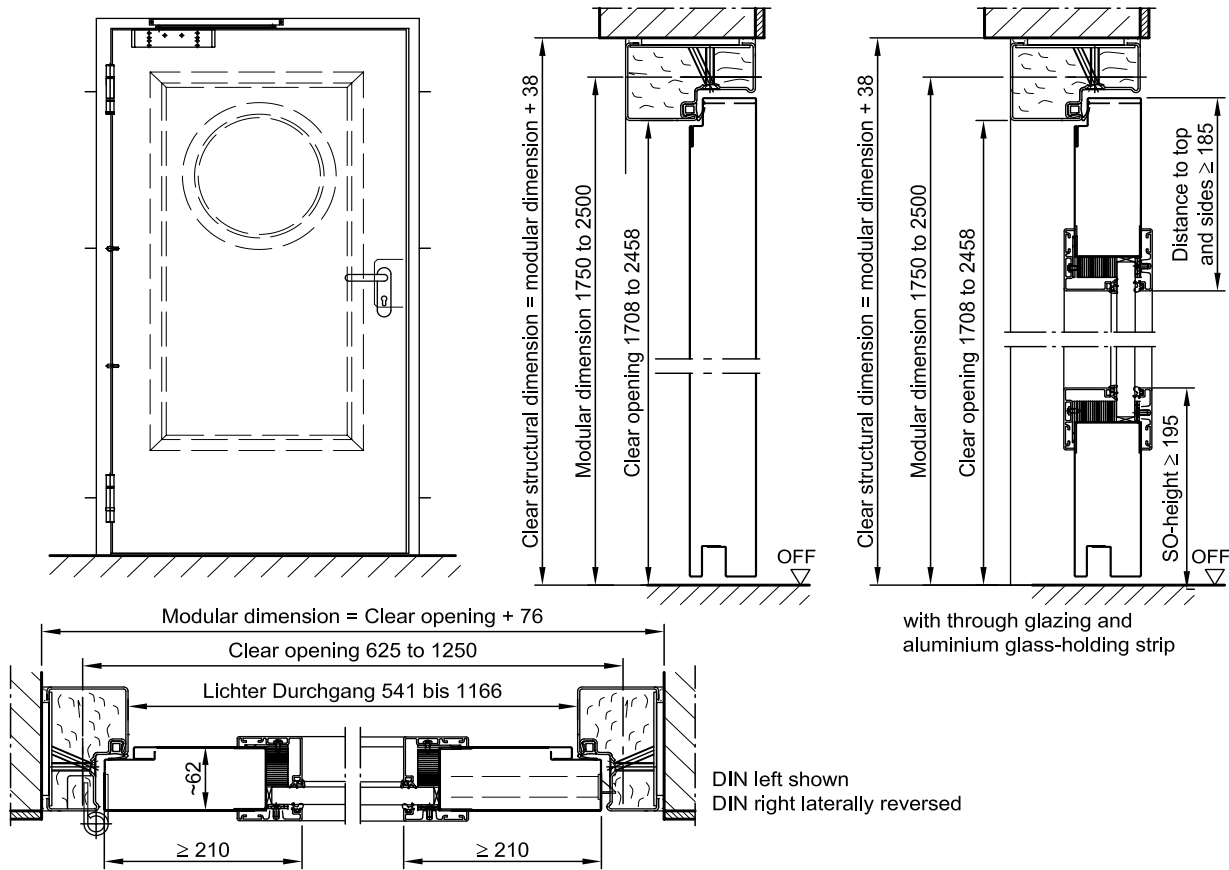
Sound insulated in acc. with DIN EN 20140/717 Part 1  
**RW 35dB** with retractable floor seal  
**RW 34 dB** with sliding threshold seal  
**RW 35 dB** with bottom buffer



Burglar resistant in accordance with DIN EN 1627- RC 2

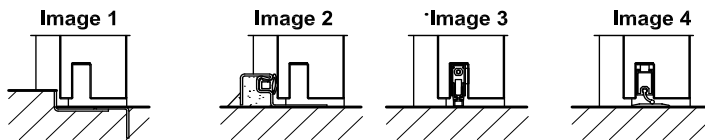
**Fire resistant steel door**  
**T 30-1-FSA „Teckentrup 62 ST“**

flush mounted / optionally with glazing



**Floor connections:**

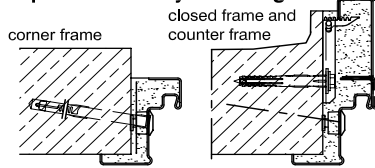
- Image 1: With bottom buffer
- Image 2: With bottom buffer/seal
- Image 3: With bottom seal (smoke-proof door with top door closer)
- Image 4: sliding threshold seal



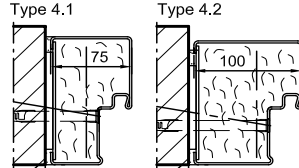
**Installation in masonry/ concrete walls**

- concrete walls  $\geq 100$  mm
- masonry walls  $\geq 115$  mm

**exposed masonry mounting**



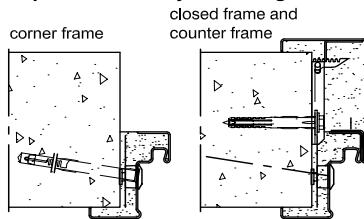
**Flush installation**



**Installation in autoclaved aerated concrete walls**

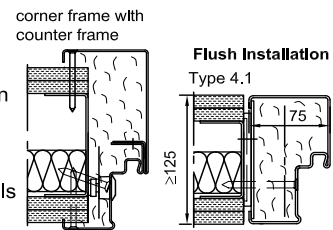
- (doors with top door closer)
- Made of autoclaved aerated concrete blocks or made of reinforced autoclaved aerated concrete slabs.
- Wall thickness min. 115 mm.

**exposed masonry mounting**



**Installation in lightweight construction stud walls**

- (doors with top door closer)
- Installation walls  $\geq$  F30 wall thickness 100 mm. For permissible walls refer to the installation details tab



Please find a detailed installation overview in the planning-, installation- and maintenance manual for 1-leaf and 2-leaf doors.