

# Fire-resistant all-glass door T 30-1-FSA „Teckentrup GL“

## Text example

Compile and tender according to requirements.  
Please refer to technical data below for respective details.  
Updated 1<sup>st</sup> June 2015



Position	No. of pieces	Item	Unit price €	Total price €
		T 30-1-FSA All-glass door, tested in accordance with EN 1634-1. Frameless single-leaf glass-door. Door leaf 27 mm thick. Corner frame 1.5 mm thick with 3-sided seal and bottom sill. Fitting covers made from stainless steel 1.4301, grinded with grain size 240. Frame galvanized and prime coated in Traffic white, similar to RAL 9016. Standard glass-door-lock with latch lever, prepared for profile cylinder in acc. with DIN 18250. 2 VN-all-glass-fire-protection-hinges with stainless steel cover. Dorma TS 93 system with slide rail, in acc. with DIN EN 1154. Stainless steel type mounted on hinge side. „Teckentrup GL“ or equivalent.		

## Technical data

### Building authority

**approval:** Z-6.20-2184 tested in accordance with **EN 1634-1** (DIN 4102)

**Installation in:**

- Masonry min. 115 mm
- Concrete min. 100 mm
- Lightweight construction stud walls \* min. 100 mm
- Autoclaved aerated concrete min. 115 mm

\* Installation walls  $\geq$  F 90 as per DIN 4102-4 or in accordance with general building authority test certificate. For permissible walls refer to the installation details tab.

**Approved Dimensions:** Modular dimensions:  
width: 625 - 1250 mm  
height: 1750 - 2500 mm

**Handing:** DIN right or DIN left

**Door leaf:** Door leaf thickness: ca. 27 mm

**Frame:** Corner frame 1.5 mm thick with 3-sided seal and bottom sill, fixed with 3 screws per side.  
Special equipment: corner-/counter frame, closed frame, block frame type 4.1 or 4.2

**Surface:**

- Fitting covers made from stainless steel 1.4301 grinded with grain size 240
- Frame galvanized and prime coated in Traffic white, similar to RAL 9016

### Hinges and closing

**devices:**

- 2 VN-all-glass-fire-protection-hinges with stainless steel cover
- Dorma TS 93 with slide rail as per DIN EN 1154. Stainless steel type mounted on hinge side.

**Lock/Fittings:**

- Standard glass-door lock with latch lever, prepared for profile cylinder as per DIN 18250, stainless steel round fire-resistant handle set

Special equipment:

- Glass-door lock with panic function DIN EN 179/1125, stainless steel round handle set

### Special

#### equipment:

- Frame in RAL of choice
- Application of stickers on the glass possible
- Anti-panic function
- Door drive

### Standard sizes:

(Special sizes: from 625 x 1750 mm up to 1250 x 2500 mm)

Ordering size/ Modular dimensions width x height	Clear passage size (corner frame) width x height
875 x 1875	791 x 1833
2000	1958
2125	2083
1000 x 2000	916 x 1958
2125	2083
1125 x 2000	1041 x 1958
2125	2083
1250 x 2000	1166 x 1958
2125	2083
2250	2208

### Further qualifications (special equipment):



- **Smoke-proof** as per EN 1634-3/DIN 18095 with top door closer for solid and lightweight construction stud walls

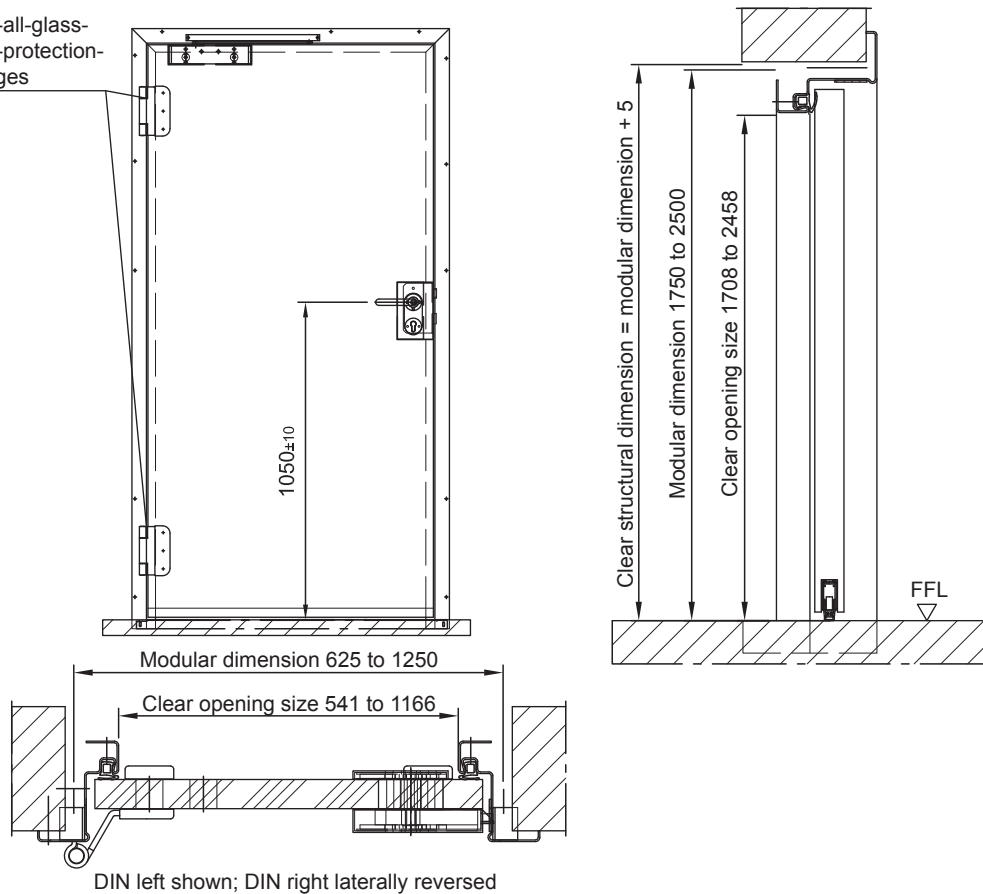


- **Sound insulation** in accordance with DIN EN 20140/717-1 **Rw 34dB** with retractable bottom seal

# Fire-resistant all-glass door T 30-1-FSA „Teckentrup GL“

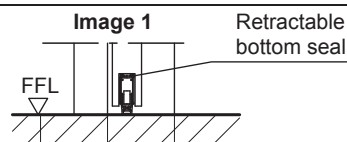
**TECKENTRUP**  
DOOR SOLUTIONS

VN-all-glass-  
fire-protection-  
hinges



## Floor connections

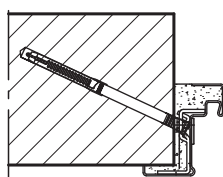
Image 1: with retractable bottom seal



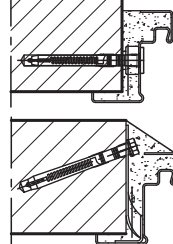
## Installation in masonry/ concrete walls

concrete walls  $\geq 140$  mm  
masonry walls  $\geq 175$  mm

### Wall plug assembly

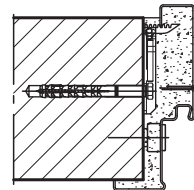


### Wall plug assembly

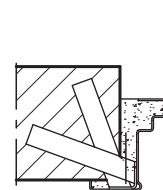


### Wall plug assembly

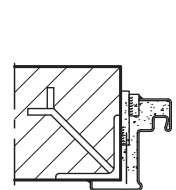
Closed frame  
and counter frame



### Wall anchor assembly

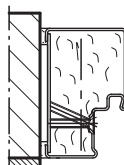


### Weld-on assembly

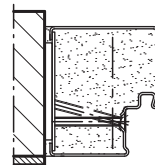


## Installation with block frame

Flush installation between  
concrete walls  $\geq 140$  mm  
masonry walls  $\geq 175$  mm



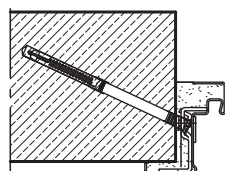
Block frame type 4.1



Block frame type 4.2

## Installation in autoclaved aerated concrete walls

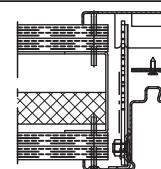
Made of autoclaved aerated  
concrete blocks or high precision  
units in acc. with DIN 4165  
strength class 4 or made of rein-  
forced autoclaved aerated  
concrete slabs strength class 4.  
Wall thickness min. 150 mm



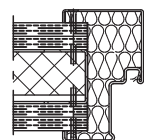
Wall plug assembly

## Installation in lightweight construction stud walls

Installation walls F90 in acc.  
with DIN 4102 Part 4 or in  
acc. with general building  
authority test certificate  
wall thickness min. 100 mm.  
For permissible walls refer to  
the installation details tab.



Corner frame  
with counter frame



Closed frame