



Fire resistant steel trap door/ steel door

T 30-1-FSA „Teckentrup HT 8-D“

Suitable for left/ right usage, sliding threshold seal retrofittable

Text example:

T 30-1 fire-proof steel door in accordance with DIN 4102. Single-leaf, left/right handed door element. Door leaf 42 mm thick, rebated on 4 sides. Corner frame 4-sided, 2,0 mm thick, with encircling seal (sound insulating). Door leaf and frame galvanized and prime-coated in Grey white, similar to RAL 9002. Mortice lock with latch lever, prepared for profile cylinder. Black plastic handle set. Handle pivoted on bearing, with tumbler insert (Bb) and 1 Bb key. 1 security bolt. FE/KO hinge set with ball bearings,

„Teckentrup HT 8-D“, or equivalent

(Compile and tender according to requirements. Please refer to technical data below for respective details. Updated 1st March 2018)

Technical data

Building authority approval	Z-6.20-2184 tested in acc. with DIN 4102. Heat transfer coefficient in acc. with EN ISO 12567-1 (without glazing) $U_o = 1.5 \text{ W/m}^2\text{K}$
Installation in	<ul style="list-style-type: none"> ▪ Masonry min. 115 mm ▪ concrete min. 100 mm
Approved dimensions	Modular dimensions: Width: 750 - 1125 mm Height: 800 - 2125 mm
Handing	Can be used left/ right handed
Trap door/ door leaf	Double-skinned, thin rebated on four sides Thickness: 42 mm Sheet thickness: 0,9 mm Security bolt: min. 1 Reinforcement: Flat steel Insulation: Mineral fibre boards
Frame	4-side corner frame 2 mm thick with circumferential seal (sound insulation). The design of the frame ensures that the bottom buffer can be removed. Frame fastening by exposed masonry mounting. Special equipment: counter frame
Surface	Standard sizes: galvanized and powder coated (primed) leaf/ frame similar to RAL 9002 (Grey white)
Hinges and closing devices	<ul style="list-style-type: none"> ▪ 1 spring hinge ▪ 1 KO hinge with ball bearings
Fittings	<ul style="list-style-type: none"> ▪ Mortice lock with latch lever, prepared for profile cylinder with tumbler insert (Bb) and 1 Bb key ▪ Black plastic handle set Handle pivoted on bearing

Special equipment

- Handle sets / Lever/ Knob sets:
 - plastic
 - light metal
 - stainless steel
 - with short plate or rose escutcheon (various makes)
- prepared for rose escutcheon
- locks
 - profile cylinder 30,5 + 30,5 mm
 - panic locks
- top door closer DIN EN 1154
- hold-open devices

	Ordering size/ Modular dimensions	clear opening dimensions
	width x height	width x height
Standard sizes (stock sizes) trap door	750 x 875	680 x 805
	800 x 800	730 x 730
	875 x 875	805 x 805
	1000	930
	1250	1180
	1000 x 1000	930 x 930

(Special sizes: see T30-1-FSA-trap door „Teckentrup 62“)

	Ordering size/ Modular dimensions	clear opening dimensions
	width x height	width x height
Standard sizes (stock sizes) steel door	750 x 1750	680 x 1711
	1875	1836
	2000	1961
	800 x 1800	730 x 1761
	1875	1836
	2000	1961
	875 x 1750	805 x 1711
	1800	1761
	1875	1836
	2000	1961
	2125	2066
	1000 x 1875	930 x 1836
	2000	1961
	2125	2086
	1125 x 2000	1055 x 1961
2125	2086	

(Special sizes: see T30-1-FSA- door „Teckentrup 62“)

Further qualifications
(Special equipment):



Smoke proof in acc. with EN 1634-3/DIN 18095 with top door closer



Sound insulated in acc. with DIN EN 20140/717 part 1
RW 39dB with bottom buffer
RW 37dB with sliding threshold seal

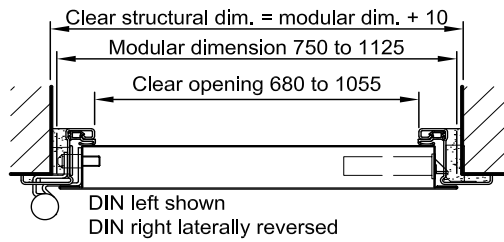
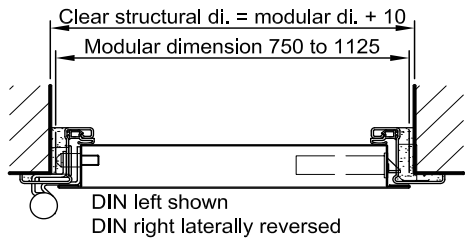
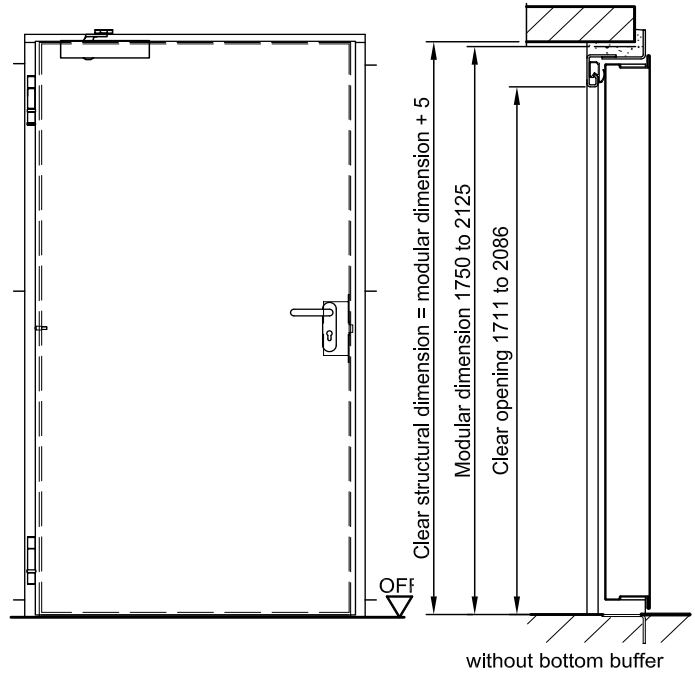
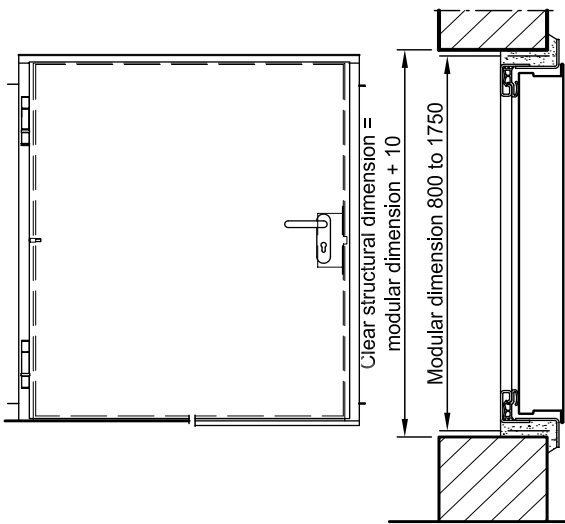


Burglar resistant in acc. with DIN ENV 1627-WK2



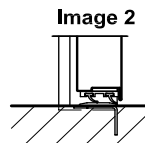
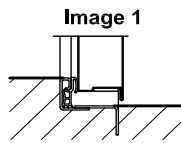
Fire resistant steel trap door/ steel door T 30-1-FSA „Teckentrup HT 8-D“

Suitable for left/ right usage, sliding threshold seal retrofittable



Floor connections:

Image 1: With bottom buffer/seal
Image 2: With bottom seal



Specify type of handling!

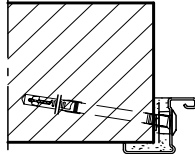
(smoke-proof door with top door closer in acc. with DIN 18095)

Installation in masonry/ concrete walls

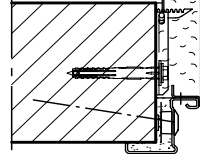
concrete walls ≥ 100 mm
masonry walls ≥ 115 mm

Exposed masonry installation

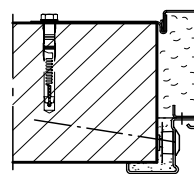
Corner frame



Corner frame with counter frame



alternativ counter frame-Montage



Please find a detailed installation overview in the planning-, installation- and maintenance manual for 1-leaf and 2-leaf doors.