



## Fire-resistant steel door T 30-2-FSA „Teckentrup 62“

thin rebated, optionally with glazing, optionally with top light/upper casing

### Text example:

T 30-2-FSA fire-proof steel door tested as per EN 1634-1 (DIN 4102). Double-leaf door element, active door leaf DIN right. Door leaf 62 mm thin, rebated on 3 sides. Flush mounted door leaf without hinge stamping. Corner frame 1.5 mm thick with 3-sided seal and bottom sill. Leaf and frame galvanized and prime coated in Grey white, similar to RAL 9002. Active door leaf with mortice lock, with latch lever, prepared for profile cylinder as per DIN 18250. FS-round handle set, black (plastic), handle pivoted on bearing, with tumbler insert (Bb) and 1 Bb-key. Inactive door leaf with espagnolette bolt lock and standard top locking. 2 KO-hinges with ball bearings per leaf, 1 top door closer as per DIN EN 1154, 1 security bolt, 1 door selector. "Teckentrup 62" or equivalent.  
(Compile and tender according to requirements. Please refer to technical data below for respective details. Updated 1. March 2018.)

### Technical data

<b>Building authority approval:</b>	Z-6.20-2037 tested as per DIN 4102 (EN1634-1) for installation in internal walls. Heat transfer coefficient as per EN ISO 12567-1 (without glazing) Sheet thickness 1,0 mm: $U_D = 1,4 \text{ W/m}^2\text{K}$ Sheet thickness 1,5 mm: $U_D = 1,5 \text{ W/m}^2\text{K}$
<b>Installation in</b>	<ul style="list-style-type: none"> <li>▪ Masonry wall min. 115 mm</li> <li>▪ Concrete wall min. 100 mm</li> <li>▪ Lightweight construction stud wall min. 88 mm</li> <li>▪ Autoclaved aerated                             <ul style="list-style-type: none"> <li>- concrete wall min. 115 mm</li> <li>- reinforced type min. 115 mm</li> </ul> </li> <li>▪ covered steel-. wood beams F60</li> </ul> <p>* F ≥ 30 as per DIN 4102 part 4 or in accordance with the general building authority test certificate. For permissible walls refer to the installation details tab.</p>
<b>Approved dimensions</b>	Modular dimension: W 1375 – 3000 mm H 1750 – 4000 mm With top light/ top casing up to H 4600 mm
<b>Handing</b>	DIN right or DIN left
<b>Door leaf</b>	double skinned rebated on three sides <b>thin rebated</b> Door leaf thickness: 62 mm Sheet thickness: 1,0 mm or 1,5 mm > MD-Height door leaf 3000 mm only 1,5 mm Security bolt: min. per leaf 1
<b>Frame</b>	<ul style="list-style-type: none"> <li>▪ Corner frame 1,5/2,0 mm thick, with 3-sided seal, without floor recess. Frame fastening by exposed masonry mounting.</li> </ul> <p>Special equipment:</p> <ul style="list-style-type: none"> <li>▪ block-, counter- or closed frame</li> <li>▪ with floor recess</li> </ul>
<b>Floor seals</b>	<ul style="list-style-type: none"> <li>▪ Retractable floor seal</li> <li>▪ sliding threshold seal</li> <li>▪ Buffer strip and seal</li> <li>▪ Floor seal retrofittable</li> </ul>
<b>Surface</b>	<ul style="list-style-type: none"> <li>▪ Door leaf/Frame galvanized and prime coated, similar to RAL 9002 (Grey white).</li> </ul> <p>Special equipment:</p> <ul style="list-style-type: none"> <li>▪ RAL of choice</li> </ul>
<b>Hinges and closing devices</b>	<ul style="list-style-type: none"> <li>▪ 2 KO-hinges with ball bearings per door leaf and top door closer</li> <li>▪ 1 door selector</li> <li>▪ compensation rings for height adjustment</li> </ul>

Also available in **STAINLESS STEEL**

<b>Fittings</b>	<p>Active door leaf:</p> <ul style="list-style-type: none"> <li>▪ Mortice lock with latch lever prepared for profile cylinder as per DIN 18250. FS round handle set black (plastic), handle pivoted on bearing, with tumbler insert (Bb) and 1 Bb key</li> </ul> <p>Inactive door leaf:</p> <ul style="list-style-type: none"> <li>▪ Inactive leaf with espagnolette bolt and standard top locking.</li> </ul>
<b>Glazing</b>	<p>Fire resistant glass, Glazing area angled with aluminium glass holding strips. Max. pane size 904 x 2150 mm. round glazing Ø 300, Ø 400 and Ø 500 with steel glass holding strips galvanized and prime-coated, grey-white similar to RAL 9002.</p>
<b>Special equipment</b>	<ul style="list-style-type: none"> <li>▪ Handle sets / Lever/Knob sets:                             <ul style="list-style-type: none"> <li>- plastic - light metal</li> <li>- stainless steel</li> </ul> </li> <li>▪ - with short plate or rose escutcheon (various makes)</li> <li>▪ prepared for rose escutcheon</li> <li>▪ locks:                             <ul style="list-style-type: none"> <li>profile cylinder 40,5 + 40,5 mm</li> <li>- panic locks</li> <li>block lock (must be provided)</li> </ul> </li> <li>▪ top door closer DIN EN 1154</li> <li>▪ - head assembly</li> <li>▪ - with slide rail</li> <li>- with locking device</li> <li>▪ - with smoke detector</li> <li>- ITS 96 (hidden)</li> <li>▪ electric door opener</li> <li>▪ Integrated lock inspector (bolt contact)</li> <li>▪ Integrated opening indicator (Reed contact)</li> <li>▪ Revolving door drives</li> <li>▪ Hold-open devices</li> <li>▪ 3D-hinges (with top door closer)</li> </ul>

	Ordering dimensions / (modular dimensions) Width x height	Clear passage size (corner frame) width x height
<b>Standard size</b>	1500 x 2000	1416 x 1958
	2125	2083
	1750 x 2000	1666 x 1958
	2125	2083
	2000 x 2000	1916 x 1958
	2125	2083
	2500	2458
	2125 x 2125	2041 x 2083
	2250 x 2250	2166 x 2208
	2500 x 2500	2416 x 2458

(Special sizes: from 1375 x 1750 to 3000 x 4000)

**Further Qualifications**  
(Special equipment):



Smoke proof in accordance to 1634-3/DIN 18095 with top door closer



Sound insulated in acc. with DIN EN 20140/717 Part 1  
RW 38 dB with retractable floor seal  
RW 37 dB with sliding threshold seal  
RW 38 dB with buffer strip and seal

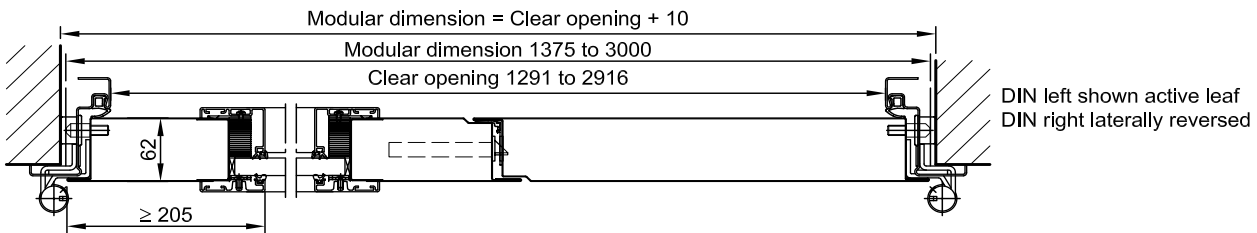
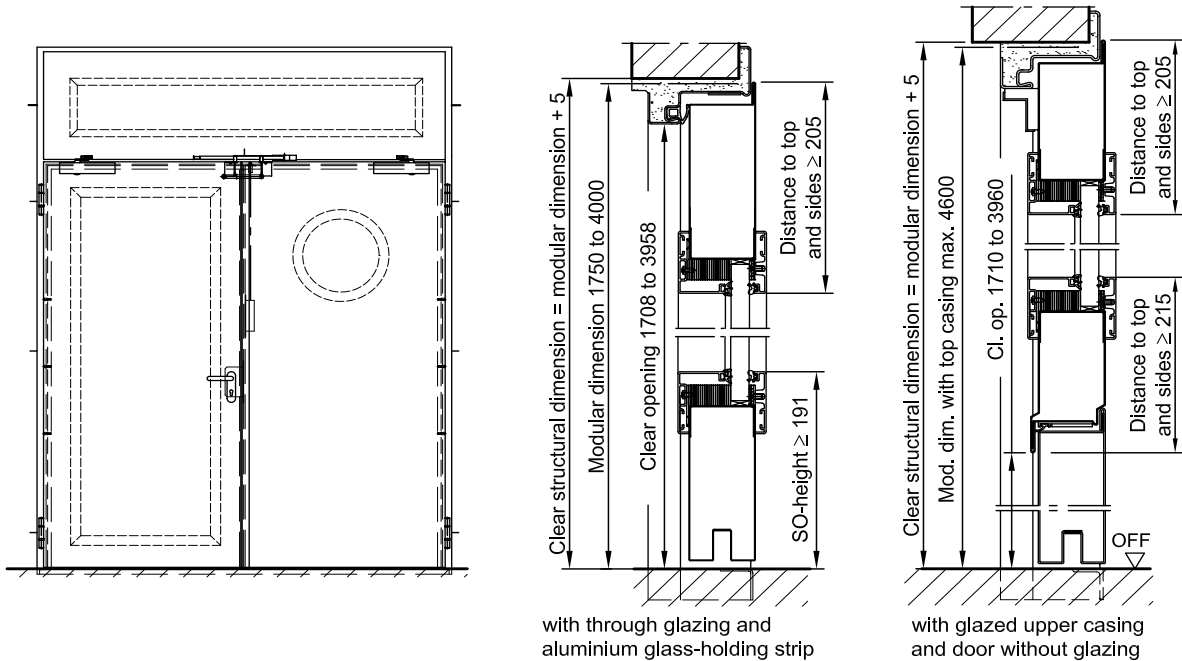


Burglar resistant in accordance with - DIN EN 1627 - RC 2, RC 3, RC 4



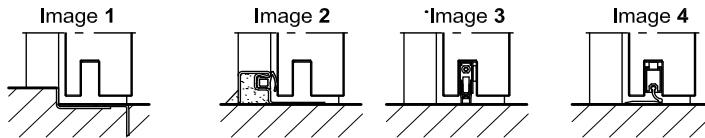
# Fire-resistant steel door T 30-2-FSA „Teckentrup 62“

thin rebated, optionally with glazing, optionally with top light/upper casing



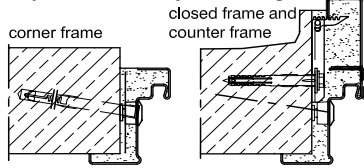
**Floor connections:**

- Image 1: With bottom buffer
- Image 2: With bottom buffer/seal
- Image 3: With bottom seal (smoke-proof door with top door closer)
- Image 4: sliding threshold seal

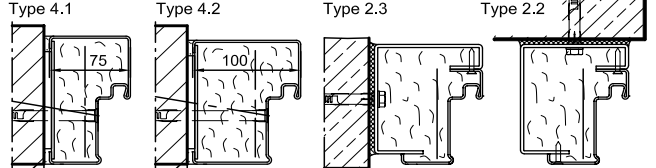


**Installation in masonry/ concrete walls**  
concrete walls  $\geq 100$  mm  
masonry walls  $\geq 115$  mm

**exposed masonry mounting**

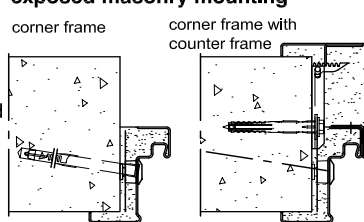


**Flush Installation**

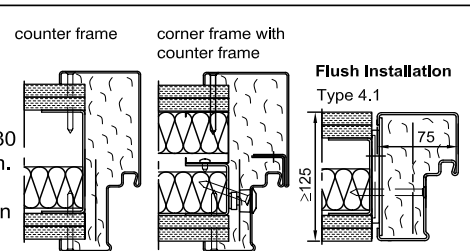


**Installation in autoclaved aerated concrete walls**  
(doors with top door closer)  
Made of autoclaved aerated concrete blocks or made of reinforced autoclaved aerated concrete slabs.  
Wall thickness min. 115 mm.

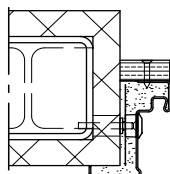
**exposed masonry mounting**



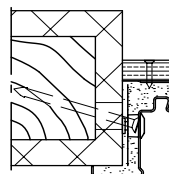
**Installation in lightweight construction stud walls** (doors with top door closer)  
Installation walls  $\geq F30$  wall thickness 88 mm.  
For permissible walls refer to the installation details tab



**Installation on concealed steel supports**  
F60



**Installation on wooden supports**  
F60



Please find a detailed installation overview in the planning-, installation- and maintenance manual for 1-leaf and 2-leaf doors.