

Fire-resistant all-glass door T 30-2-FSA „Teckentrup GL“

TECKENTRUP
DOOR SOLUTIONS

Text example

Compile and tender according to requirements. Please refer to technical data below for respective details.

Updated 1st June 2015



Position	No. of pieces	Item	Unit price €	Total price €
		T 30-2-FSA All-glass door, tested in accordance with DIN 4102 (EN 1634-1). Frameless double-leaf glass-door. Door leaf thickness 27 mm. Corner frame 1.5 mm thick with 3-sided seal and bottom sill. Fitting covers made from stainless steel 1.4301, grinded with grain size 240. Frame galvanized and prime coated in Traffic white, similar to RAL 9016. Standard Glass-door-lock with latch lever, prepared for profile cylinder in acc. with DIN 18250. 2 VN-All-glass-door-fire-protection-hinges with stainless steel cover. Dorma TS93 as per DIN EN 1154, stainless steel type mounted on hinge side. "Teckentrup GL" or equivalent.		

Technical data

Building authority approval:

Z-6.20-2184 tested in accordance with DIN 4102 (EN 1634-1)

Installation in:

- Masonry min. 175 mm
- Concrete min. 140 mm
- Autoclaved aerated concrete min. 175 mm

* For permissible walls refer to the installation details tab.

Approved Dimensions:

Modular dimensions:

width: 1500 - 2500 mm

height: 1750 - 2500 mm

Handing: DIN right or DIN left

Door leaf: Door leaf thickness: ca. 27 mm

Frame: Corner frame 1.5 mm thick with 3-sided seal and bottom sill, fixed with 3 screws per side.

Surface:

- Fitting covers made from stainless steel 1.4301 grinded with grain size 240
- Frame galvanized and prime coated in Traffic white, similar to RAL 9016

Hinges, closing devices:

- 4 VN-all-glass-fire-protection-hinges with stainless steel cover
- Dorma TS 93 with slide rail as per DIN EN 1154. Stainless steel type mounted on hinge side, Contur Design.

Lock/ Fittings:

- Standard glass-door lock with latch lever, prepared for profile cylinder as per DIN 18250, stainless steel round fire-resistant handle set

Special equipment:

- Glass-door lock with panic function DIN EN 179/1125, stainless steel round handle set

Special equipment:

- Counter frame, closed frame and Block frame
- Application of stickers on the glass possible
- Screen printing on inside of the pane

Ordering size/ Modular dimensions width x height	Clear opening size (Corner frame)	
	width	height
Standard sizes: 1750 x 2125	1666	1958
Special sizes: 2000 x 2000 from 2125	1916	2083 1958
1500 x 1750 mm up to	2125	2083
2500 x 2500 mm	2250	2083
	2500	2416
		2083

Further qualifications (special equipment):

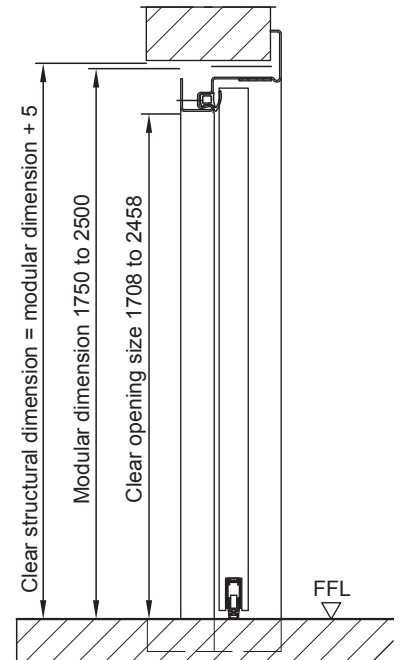
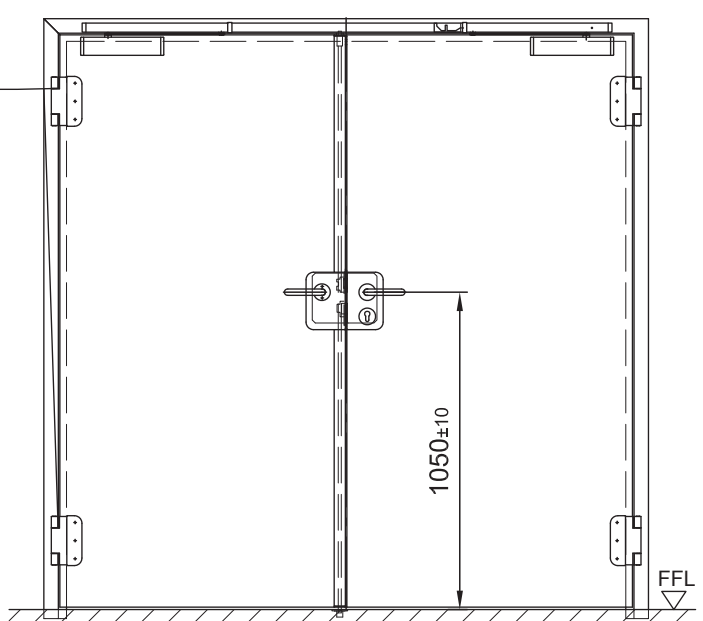


- Smoke-proof in accordance with EN 1634-3/DIN 18095 with top door closer for solid and lightweight construction stud walls

Fire-resistant all-glass door T 30-2-FSA „Teckentrup GL“

TECKENTRUP
DOOR SOLUTIONS

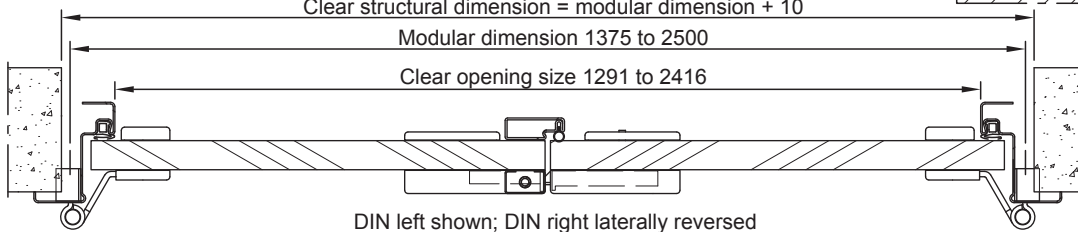
VN-all-glass-
fire-protection-
hinges



Clear structural dimension = modular dimension + 10

Modular dimension 1375 to 2500

Clear opening size 1291 to 2416



DIN left shown; DIN right laterally reversed

Floor connections

Image 1: with retractable
bottom seal

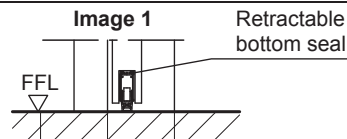


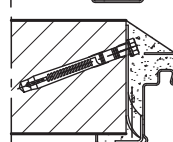
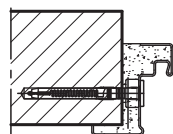
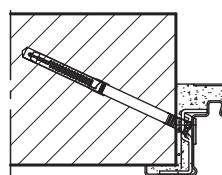
Image 1

Retractable
bottom seal

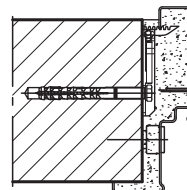
Installation in masonry/ concrete walls

concrete walls ≥ 140 mm
masonry walls ≥ 175 mm

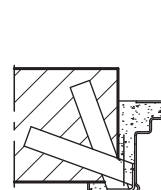
Wall plug assembly



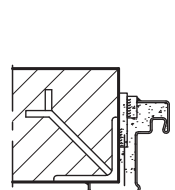
Wall plug assembly Closed frame and counter frame



Wall anchor assembly

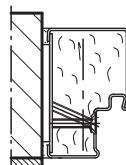


Weld-on assembly

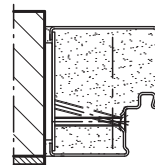


Installation with block frame

Flush installation between
concrete walls ≥ 140 mm
masonry walls ≥ 175 mm



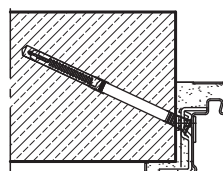
Block frame type 4.1



Block frame type 4.2

Installation in autoclaved aerated concrete walls

Made of autoclaved aerated
concrete blocks or high precision
units in acc. with DIN 4165
strength class 4 or made of rein-
forced autoclaved aerated
concrete slabs strength class 4.
Wall thickness min. 175 mm



Wall plug assembly