



Fire-Resistant Steel Trap/Steel door T90-1-FSA „Teckentrup 62“

Door with thin rebate, optionally with glazing, optionally with upper casing

Text:

T 90-1-FSA Steel-fire resistant door tested acc. EN 1634-1 (DIN 4102). Single leaf door element. Type of handling DIN right. Door leaf 62 mm thick, 3-sided rebated. Corner frame 1.5 mm thick with 3-sided seal, without floor recess. Door leaf and frame galvanised prime coated, grey white similar RAL 9002. Mortise lock with latch function PC-perforated acc. DIN 18250. FP-round handle set black (plastic). Handle pivoted on bearing with tumbler insert (Bb) an 1 Bb-key. 2 CO hinges with ball bearing and 1 top door closer.

„Teckentrup 62 or equivalent.

(Compile and tender according to requirements. Please refer to technical data below for respective details 01.03.2021)

[Text T90-1 online](#)

Technical data

General building authority approval	Z-6.20-1965 tested acc. EN 1634-1 (DIN 4102) for installation in interior walls
Installation in	<ul style="list-style-type: none"> ▪ Masonry min. 175 mm ▪ Concrete min. 140 mm ▪ Lightweight construction stud wall * min. 84 mm ▪ Aerated concrete <ul style="list-style-type: none"> - aerated concrete stones min. 175 mm - reinforced aerated concrete min. 150 mm ▪ Concealed steel supports F 90 <p>* Assembly walls F 90 acc. DIN 4102 part 4 or general building authority test certificate. Approved wall types see register "installation details.</p>
Approved dimensions	Modular-dimension W 500 - 1500 mm H 500 - 3000 mm with upper casing up to H 4000 mm
Type of handling	DIN right oder DIN links
Door leaf double skinned	Rebate type: thin rebate Trap: 4-sided rebated Door: 3-sided rebated Door leaf thickness: 62 mm Sheet thickness: 1.0/1.5 mm Security bolt: min. 1
Frame	Corner frame 1.5/2.0 mm thick, trap 4-sided Door 3-sided with circumferential seal, without floor recess. Fastening by exposed masonry mounting. Special equipment: <ul style="list-style-type: none"> ▪ Block frame and counter frame or closed frame / frame with floor recess
Heat insulation	Thermal transmittance acc. EN ISO 12567-1 (without glazing) sheet thickness 1,0 mm: $U_D = 1,6 \text{ W/m}^2\text{K}$ sheet thickness 1,5 mm: $U_D = 1,7 \text{ W/m}^2\text{K}$ in conjunction with bottom floor closure
Floor closures	<ul style="list-style-type: none"> ▪ Retractable bottom seal ▪ Sliding threshold seal ▪ Buffer strip with seal - Bottom seal retrofittable
Surface	Door leaf /Frame galvanised and prime coated, grey white similar RAL 9002 Special equipment: <ul style="list-style-type: none"> ▪ RAL of choice
Hinges and closing device	<ul style="list-style-type: none"> ▪ 1 spring hinge and 1 CO-hinge with ball bearing or ▪ 2 CO hinges with ball bearing and 1 top door closer
Fittings	<ul style="list-style-type: none"> ▪ Mortise lock with latch function PC-perforated acc. DIN 18250 ▪ FP-round-handle set black (plastic). DHandle pivoted on bearing with tumbler (Bb) insert and 1 Bb key

Also available in **STAINLESS STEEL !**

Glazing	Fire resistant glass F 90, rectangular glazing with aluminium glass holding strips. Max. pane size 1000 x 2263 mm. Round glazing (Ø 300, 400 and 500 mm) with steel glass holding strips galvanised and prime coated, grey white similar RAL 9002. Special equipment: <ul style="list-style-type: none"> ▪ Rectangular-round glazing glass holding strips made of stainless steel /rectangular glazing glass holding strips aluminum in stainless steel design 	
Special equipment	<ul style="list-style-type: none"> ▪ Handle sets / Lever/Knob sets: <ul style="list-style-type: none"> - plastic - Light metal - stainless steel - with short plate or rose escutcheon (various makes) ▪ prepared for rose escutcheon ▪ Panic/bar handle ▪ Locks <ul style="list-style-type: none"> - Panik locks - Block lock (must be provided) ▪ Profilcylinder40.5+40.5mm ▪ Top door closer DIN EN 1154 ** <ul style="list-style-type: none"> - hinge-/opposite hinge side - with slide rail - with locking device - with smoke detector - ITS 96 (hidden) ** - with TDC - doors with glazing / installation in lightweight construction stud walls / aerated concrete walls ▪ Electrical door opener ▪ Integrated lock inspector (bolt contact) ▪ Integrated opening indicator (reed contact) ▪ Revolving door drives ▪ Hold-open devices ▪ 3D-hinges (with TDC) 	
	Ordering dim. / MD dim.	Clear passage size (corner frame)
	Width x height	Width x height
Standard (stock sizes)	750 x 875	666 x 791
Steel trap door	875 x 875	791 x 791
	1000	916
	1250	1166
	1000 x 1000	916 x 916
	1250	1166
	1250 x 1250	1166 x 1166
Standard (stock sizes)	875 x 1875	791 x 1833
Steel door	2000	1958
	2125	2083
	1000 x 1875	916 x 1833
	2000	1958
	2125	2083
	1125 x 2000	1041 x 1958
	2125	2083
	1250 x 2000	1166 x 1958
	2125	2083

(Special sizes: from 500 x 500 1500 x 3000)

Further qualifications
(Special versions):



Smoke proof acc. EN 1634-3/ DIN 18095 with TDC for solid door walls and lightweight construction stud walls



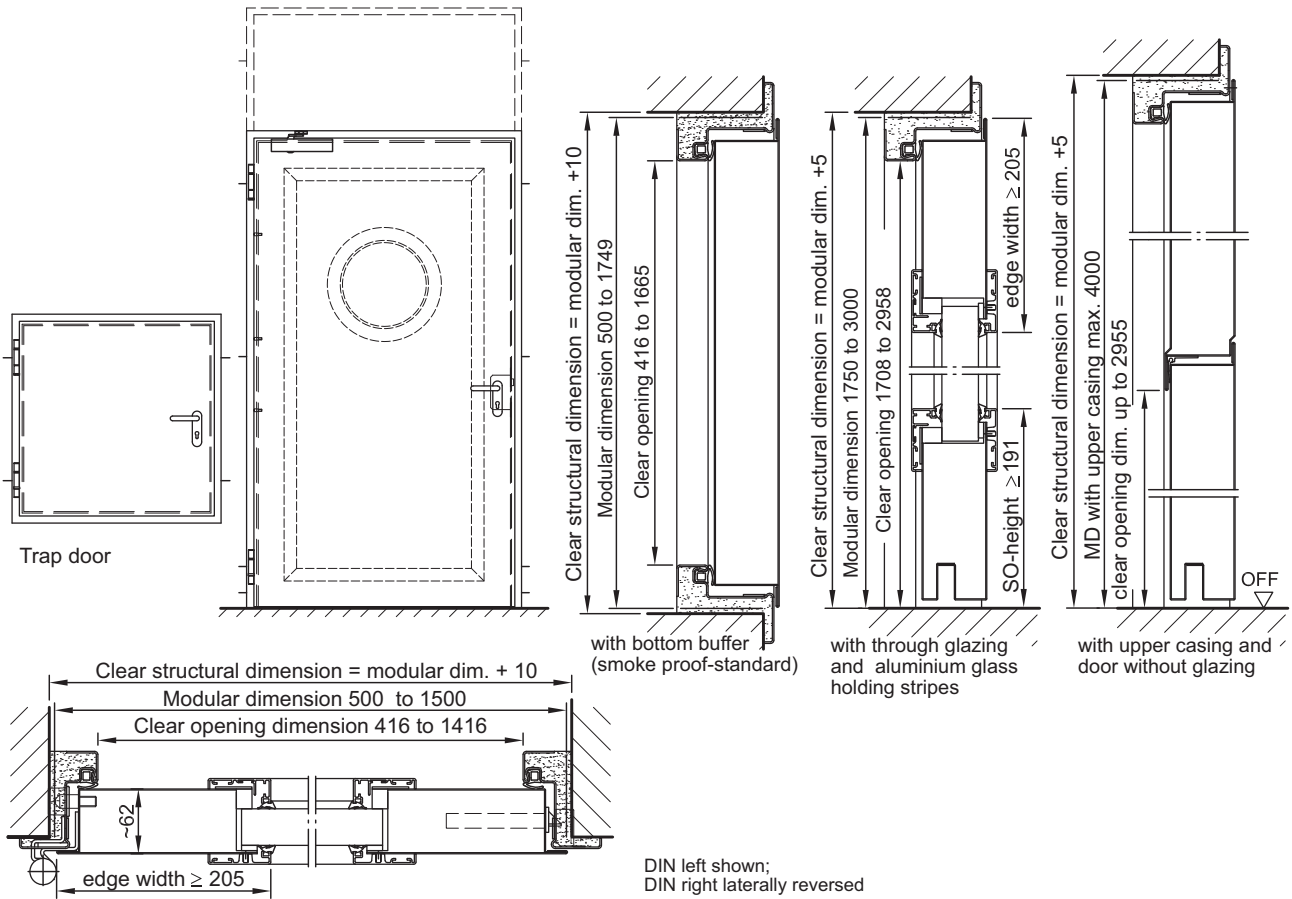
Sound insulated acc. DIN EN 20140/717 Part 1 **RW 42dB** with bottom buffer **RW 42dB** with retractable bottom seal



Burglar resistance acc. DIN EN 1627 - **RC 2, RC 3, RC 4**

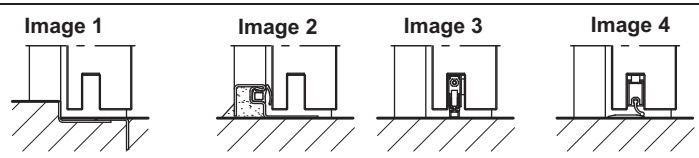
Fire-Resistant Steel Trap/Steel door
T90-1-FSA „Teckentrup 62“

Door with thin rebate, optionally with glazing, optionally with upper casing



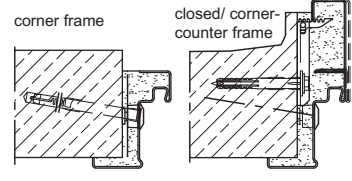
Floor connections:

- Image 1: with bottom buffer
- Image 2: with bottom buffer/seal
- Image 3: with retractable bottom seal (smoke proof door with TDC)
- Image 4: with sliding threshold seal

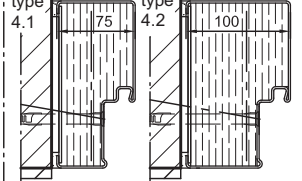


Installation in masonry/ concrete walls
concrete walls ≥ 140 mm
masonry walls ≥ 175 mm

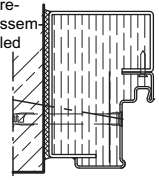
Exposed masonry mounting



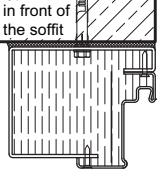
Flush edge installation



type 2.3 pre-assembled

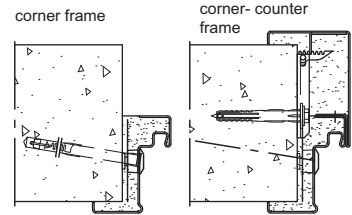


type 2.2 in front of the soffit

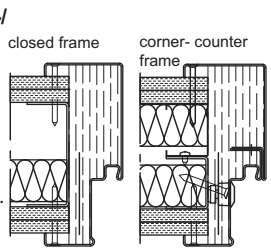


Installation in autoclaved aerated concrete walls (doors with OTS)
Made of auto. aerated concrete blocks. Wall thickness min. 175 mm or reinforced auto. aerated concrete. Wall thickness min. 150 mm

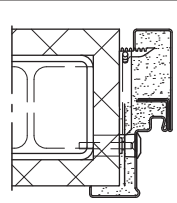
Exposed masonry mounting



Installation in assembly-/ assembly fire walls (F90)
(doors with TDC) in acc. with general building authority test certificate. Approved wall types see register installation details.



Installation in concealed steel support
F90



Please find a detailed installation overview in the planning-, installation- and maintenance manual for 1-leaf and 2-leaf doors.