



# Fire resistant steel door T 90-1-FSA „Teckentrup DF“

optionally with glazing

### Text example:

T 90-1-FSA fire-proof steel door tested in accordance with DIN 4102. Single leaf door element. Type of handing DIN right. Door leaf 62 mm thick, rebated on three sides. Corner frame 2.0 mm thin with 3-sided seal. Door leaf and frame galvanized and prime coated similar to RAL 9002 (Grey white). Mortice lock with latch lever in accordance with DIN 18250, prepared for profile cylinder. Black plastic round handle set, handle pivoted on bearing, with tumbler insert (Bb) and 1 Bb key. 3 security bolts. 2 KO-hinges with ball bearings. 1 top door closer. „Teckentrup DF“ or equivalent.

Compile and tender according to requirements. Please refer to technical data below for respective details. Updated 1.March 2018

### Technical data

<b>Building authority approval</b>	Z-6.20-2057 tested as per DIN 4102 for installation in internal walls.
<b>Installation in</b>	<ul style="list-style-type: none"> <li>▪ Masonry wall min. 175 mm</li> <li>▪ Concrete wall min. 140 mm</li> <li>▪ Lightweight construction stud wall* min 95 mm</li> <li>▪ Autoclaved aerated concrete wall                             <ul style="list-style-type: none"> <li>- as per DIN 4165 min. 200 mm</li> <li>- reinforced type min. 200 mm</li> </ul> </li> <li>▪ Cladded steel beams F 90</li> </ul> <p>* Installation walls/Installation fire walls F 90 as per DIN 4102 part 4 or in accordance with general building authority test certificate (up to max. 1350 x 3000 mm). For permissible walls refer to the installation details tab.</p>
<b>Approved dimensions</b>	Modular dimension: W 625 - 1350 (1500) mm H 1750 - 3000 (3500) mm ( ) dimensions = door leaf thickness 64 mm
<b>Handling</b>	DIN right oder DIN left
<b>Door leaf</b>	double skinned, Door rebated on three sides <b>thick rebated</b> Door leaf thickness 62/64 mm Sheet thickness: 1.0 mm oder 1.5 mm Security bolt: 3 Reinforcement: flat steel Insulation: mineral fibre board and gypsum boards Special equipment: 1.5 mm sheet thickness
<b>Frame</b>	Cornerframe 2.0/(3.0) mm thick with 3-sided seal. With 3 welded-on wall anchor plugs on each side. Special equipment: <ul style="list-style-type: none"> <li>▪ block frame, counter- or closed frame.</li> <li>▪ with floor recess.</li> <li>▪ Installation in Lightweight construction stud walls counter frame or closed frame necessary.</li> <li>▪ Installation in Autoclaved aerated concrete (up to max. 1350 x 3000 mm) without counter frame for doors up to 1250 x 2250 mm without glazing.</li> </ul>
<b>Surface</b>	Door leaf/Frame galvanized and prime coated, similar to RAL 9002 (Grey white).
<b>Hinges, closing devices</b>	<ul style="list-style-type: none"> <li>▪ 2 KO hinges with ball bearings</li> <li>▪ 1 top door closer DIN EN 1154</li> </ul>
<b>Fittings</b>	<ul style="list-style-type: none"> <li>▪ Mortice lock with latch lever DIN 18250.</li> <li>▪ Black plastic handle set, handle pivoted on bearing with tumbler insert (Bb) and 1Bb-key.</li> </ul>

Also available in **STAINLAESS STEEL**

### Glazing

Fire resistant glass F90“ with steel glass-holding stirps, galvanize and prime coated in grey white, similar to RAL 9002. Max. pane size 740 x 2005 mm, round glazing Ø 300; Ø 400; Ø 500 mm.

Special equipment:

- steel glass holding with additional aluminum cover strips.
- Round glazing stainless steel glass holding strips.

### Special equipment

- Handle sets / Lever/Knob sets:
  - plastic - light metal
  - stainless steel
  - with short plate or rose escutcheon (various makes)
- prepared for rose escutcheon
- locks:
  - profile cylinder 40.5 + 40.5 mm
  - panic locks
  - Block lock (must be provided)
- top door closer DIN EN 1154
  - head assembly - with slide rail
  - with locking device - with smoke detector
  - ITS 96 (hidden)
- electric door opener
- Integrated lock inspector (bolt contact)
- integrated opening indicator (reed contact)
- Revolving door drives
- Hold-open devices

	Ordering dimensions / (modular dimensions) width x height	Clear passage size (corner frame) width x height
<b>Standard sizes:</b>	750 x 2000	666 x 1961
	2125	2086
	875 x 1875	791 x 18363
	2000	1961
	2125	2086
	1000 x 2000	916 x 1961
	2125	2086
	1125 x 2000	1041 x 1961
	2125	2086
	1250 x 2000	1166 x 1961
2125	2086	
2250	2211	

(Special sizes: from 625 x 1750 to 1500 x 3500)

**Further Qualifications**  
(Special equipment 62 mm door):



**Smoke proof in accordance to DIN 18095** for solid and lightweight construction stud walls



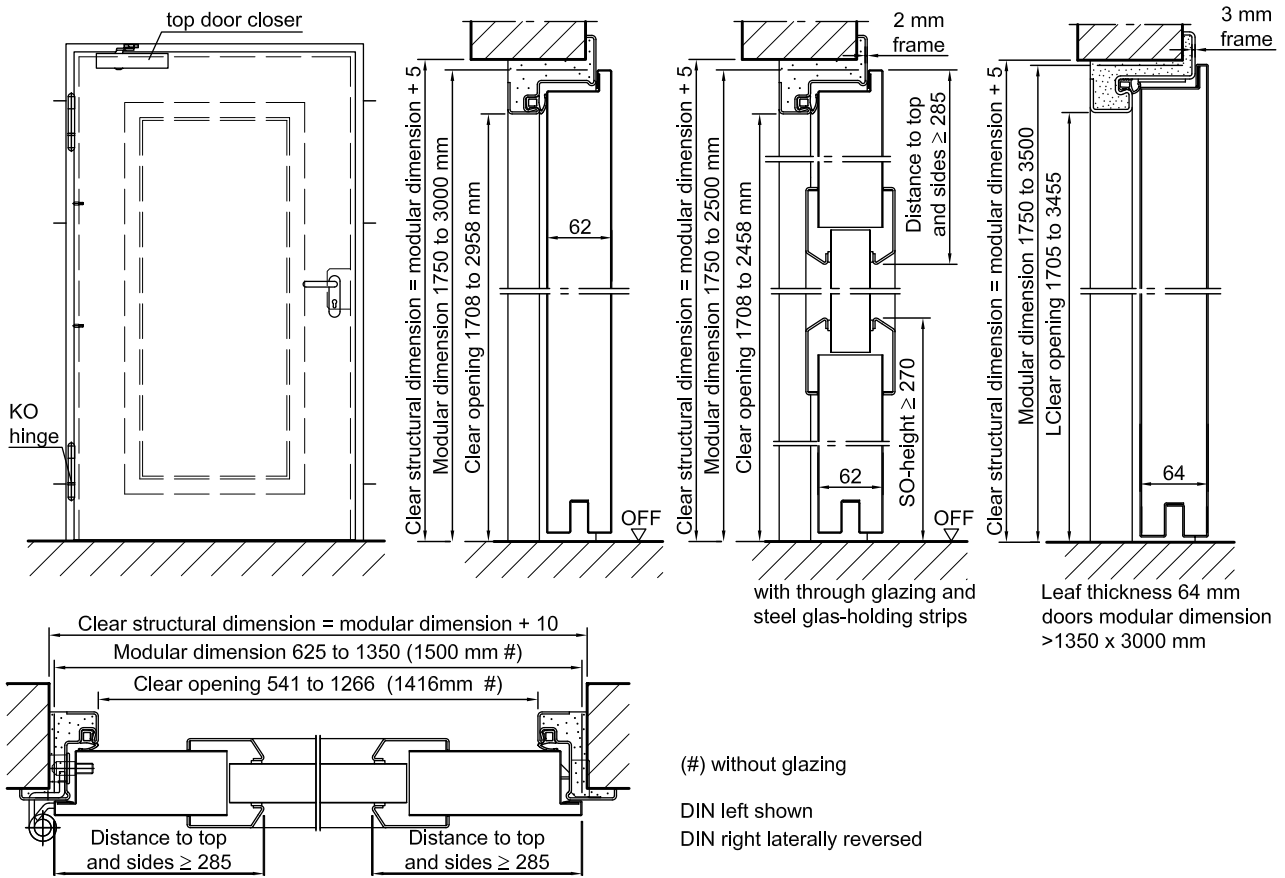
**Sound insulated in acc. with DIN EN 20140/717 T1** (up to w x h 1350 x 2500 mm without glazing)  
**RW 41dB** with retractable floor seal  
**RW 44dB** with bottom buffer and seal



**Burglar resistant in accordance with DIN EN 1627 WK 2, WK 3** (up to w x h 1250 x 2500 mm)

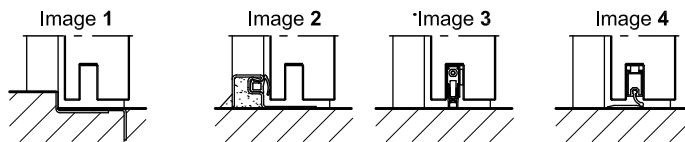
**Fire resistant steel door**  
**T 90-1-FSA „Teckentrup DF“**

optionally with glazing



**Floor connections:**

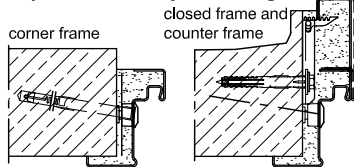
- Image 1: With bottom buffer
- Image 2: With bottom buffer/seal
- Image 3: With bottom seal (smoke-proof door with top door closer)
- Image 4: sliding threshold seal



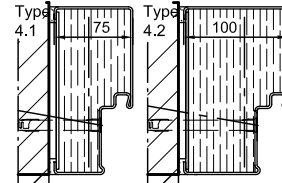
**Installation in masonry/ concrete walls**

concrete walls  $\geq 140$  mm  
masonry walls  $\geq 175$  mm  
(M.D. > 1350 x 3000 mm  
masonry walls  $\geq 240$  mm)

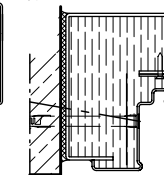
**exposed masonry mounting**



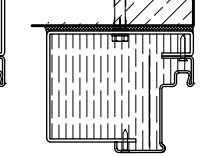
**Flush installation**



**Type 2.3**



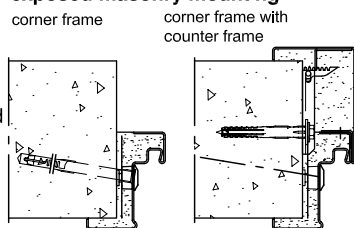
**Type 2.2 in front of the reveal**



**Installation in autoclaved aerated concrete walls**

(doors with top door closer)  
Made of autoclaved aerated concrete blocks or made of reinforced autoclaved aerated concrete slabs.  
Wall thickness min. 200 mm.

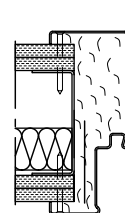
**exposed masonry mounting**



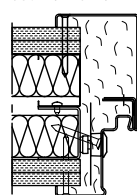
**Installation in lightweight construction stud walls**

(doors with top door closer) Installation walls  $\geq$  F90 wall thickness 100 mm. For permissible walls refer to the installation details tab

**counter frame**

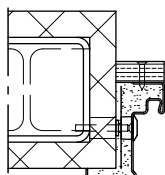


**corner frame with counter frame**



**Installation on concealed steel supports**

F90



Please find a detailed installation overview in the planning-, installation- and maintenance manual for 1-leaf and 2-leaf doors.