



Fire proof steel door T 90-1-FSA „Teckentrup 62“

Door with thin rebate, raised installation

Text example:

T 90-1-FSA Steel-Fire resistant door acc. EN 1634-1 single leaf door element. Type of handling DIN right. Door leaf 62 mm thick, 3-sided rebated. Corner frame 1.5 mm thick with 3-sided seal, without floor recess. Door leaf and frame galvanised and prime coated, grey white similar RAL 9002. Mortise lock with latch function PC-perforated acc. DIN 18250. FP-round handle set black (plastic). Handle pivoted on bearing with tumbler insert and 1 Bb-key. 2 construction hinges with ball bearing and 1 top door closer. „Teckentrup 62 or equivalent.

(Compile and tender according to requirements. Please refer to technical data below for respective details. Updated Stand 01.03.2021)
[Text T90-1-62 online](#)

Technical data

Building authority approval	Z-6.20-1965 tested acc. EN 1634-1 for raised installation (interior walls)	
Installation in	<ul style="list-style-type: none"> ▪ Masonry min. 175 mm ▪ Concrete min. 140 mm ▪ Lightweight construction stud wall * min. 100 mm ▪ concealed steel supports F 90 <p>* Assembly walls F 90 acc. DIN 4102 part 4 or general building authority test. See approved wall types in the register "installation details.</p>	
Approved dimensions	Modular dim. 1500 mm	W 625 - H 1750 - 3000 mm
Type handling	DIN right or DIN left	
Door leaf	Double skinned, /Door: Door leaf thickness: Sheet thickness: Security bolt min. :	thin rebate 3-sided rebated 62 mm 1,0 mm 2
Frame	Corner frame 1.5/2.0 mm thick, 3-sided with circumferential seal, without floor recess. Fastening by exposed masonry mounting. Special equipment: Counter frame or closed frame ▪ Frame with floor recess.	
Floor closures	▪ retractable bottom seal (standard)	
Heat insulation	Thermal transmittance acc. EN ISO 12567-1 (without glazing) sheet thickness 1.0 mm: $U_D = 1.6 \text{ W/m}^2\text{K}$	
Surface	Door leaf /frame galvanised and prime coated, grey white similar RAL 9002 Special equipment: ▪ RAL of choice	
Hinges and closing devices	▪ 2 CO hinges with ball bearing and 1 top door closer	
Fittings	<ul style="list-style-type: none"> ▪ MD-height ≤ 2250 mm: Mortise lock with latch function PC perforated ▪ MD-height ≥ 2251 mm: Multipoint locking (self locking) ▪ FP-round handle set black (plastic). Handle ▪ pivoted on bearing with tumbler insert and 1 Bb-key 	

Special equip-ment

- Handle sets / Lever/Knob sets:
 - Plastic
 - Light metal
 - Stainless steel - with short plate or rose escutcheon (various makes)
- prepared for rose escutcheon
- Panic rod handle
- Locks
 - Panic locks
 - Block lock (must be provided)
- Profile cylinder 40.5 + 40.5 mm
- Top door closer DIN EN 1154
 - hinge-/opposite hinge side
 - with slide rail
 - with locking device
 - with smoke detector
 - ITS 96 (hidden)
- Electrical door opener
- Integrated lock inspector (bolt contact)
- Integrated opening indicator (reed contact)
- Revolving door drives
- Hold open devices
- 3D-hinges

	Ordering dim. / Modular dim. Width x height	Clear passage sizes (corner frame) Width x height
Standard sizes	750 x 875	666 x 791
Steel trap door	875 x 875	791 x 791
	1000	916
	1250	1166
	1000 x 1000	916 x 916
	1250	1166
	1250 x 1250	1166 x 1166
Standard sizes	750 x 2000	666 x 1958
Steel door	875 x 1875	791 x 1833
	2000	1958
	2125	2083
	1000 x 2000	916 x 1958
	2125	2083
	1125 x 2000	1041 x 1958
	2125	2083
	1250 x 2000	1166 x 1958
	2125	2083
	2250	2208

(Special sizes: from 625 x 1750 to 1500 x 3000)

Furhter qualifications
(Special versions):



Smoke proof acc. EN 1634-3/ DIN 18095 for solid- and lightweight construction stud walls



Sound insulated acc. DIN EN 20140/717 part 1 **RW 42dB** with retractable bottom seal

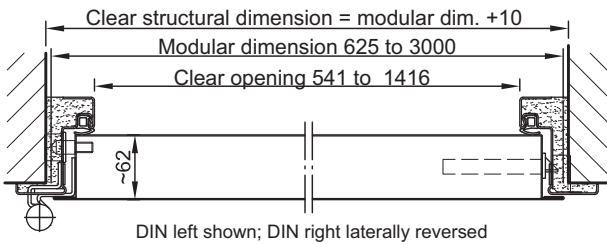
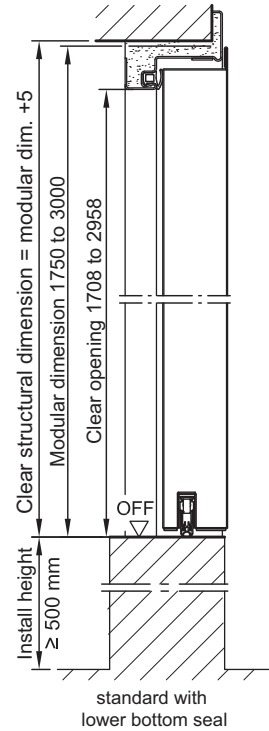
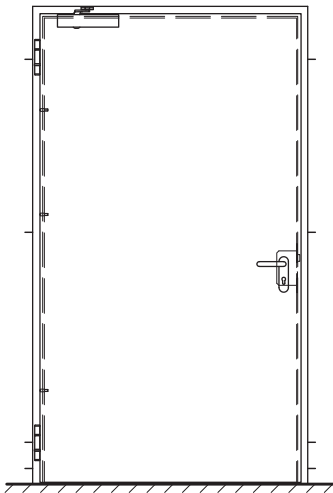


Burglar resistance acc. DIN EN 1627- **RC 2, RC 3, RC 4**

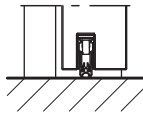


Fire proof steel door T 90-1-FSA „Teckentrup 62“

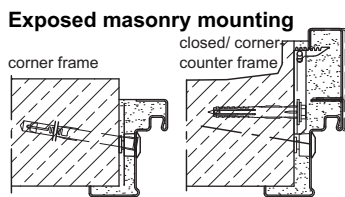
Door with thin rebate, raised installation



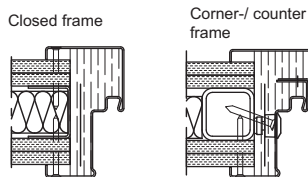
Floor connections:
with retractable bottom seal
(standard)



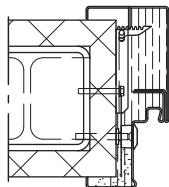
**Installation in masonry/
concrete walls**
concrete wall ≥ 140 mm
Masonry walls ≥ 175 mm



**Installation in
assembly-/
assembly fire
walls (F90)**
in acc. with general
building authority
test certificate.
Approved wall types see
register installation details.



**Installation in concealed
steel support
F90**



Please find a detailed installation
overview in the planning-,
installation- and maintenance
manual for 1-leaf and 2-leaf doors.